

MH # 4848-275
Approx depth = 9.4 ft

MH # 4848-284
Approx depth = 8.9 ft

MH # 4848-285
Approx depth = xx ft

MH # 4848-274
Approx depth = 10.2 ft

Point Repair: Remove and replace 10 lf of 8" pipe, from the west wall of MH 4848-285 to 10 lf west (including the replacement of two taps / see tv log)

MH # 4848-273
Approx depth = 12.6 ft

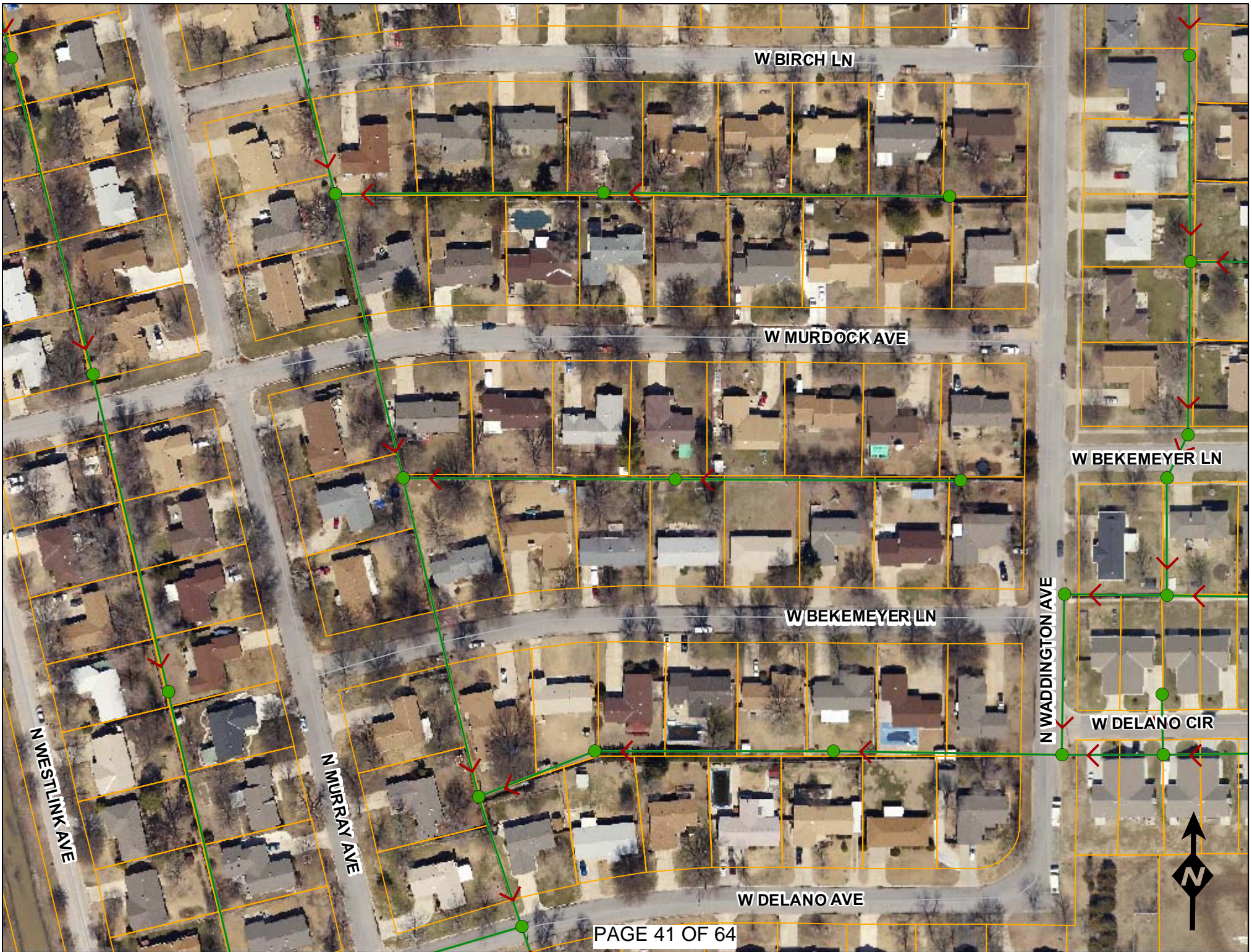
MH # 4848-287
Approx depth = 8.3 ft

MH # 4848-286
Approx depth = 9.3 ft

Install 1933 lf of 8" Cured-In-Place Liner
 ' 670 lf from MH 4848-285 to MH 4848-275
 ' 600 lf from MH 4848-287 to MH 4848-274
 ' 663 lf from MH 4848-275 to MH 4848-273

SITE 7





W BIRCH LN

W MURDOCK AVE

W BEKEMEYER LN

W BEKEMEYER LN

W DELANO CIR

N WESTLINK AVE

N MURRAY AVE

N WADDINGTON AVE

W DELANO AVE

Television Inspection Master Report

5/15/2009

2:16 PM

US Structure: 4848-287
DS Structure: 4848-286

9101 W MURDOCK ST
9200 W BEKEMEYER ST

Date Insp: 10/15/2008
Dir Televised: Up->Down

Basin: W06A

Pipe Information

Shape: Round	Length Status:	Project No. : K-063
Dia/Ht: 8	Material: VCP	Index:
Length: 306.0	Slope: 0.400	Surface:

Inspection Information

Crew: 690	Percent Full:	Tape ID: DVD #0447
Weather: Rainy	Purpose: TV Existing Line	Counter Start:

Obs. #	VTR Counter	Distance	Location	Description	Rating	Obsrvd (gpm)	Ratings			Remain (gpm)
							Est. (gpm)	Struct	Clean	
1		0.0	US Manhole 4848-287		1	0.000	0	0	0.000	
2		6.6	Joint	Roots	3	0.008	5	8	0.008	
3		7.2	South	Wye Service	2	0.000	0	0	0.000	
	9100 W BEKEMEYER			4" Clay Wye Connection	Comment: ROOTS					
4		8.4	Joint	Roots	3	0.008	5	8	0.008	
5		12.2	Joint	Roots	2	0.004	2	4	0.004	
6		16.0	Joint	Roots	2	0.004	2	4	0.004	
7		19.1	North	Break-In Conn	3	0.004	2	0	0.004	
	9101 W MURDOCK			4" Break In Connection	Comment: NEEDS REPAIR					
8		20.2	Joint	Roots		0.000	0	0	0.000	
9		21.9	North	Wye Service	1	0.000	0	0	0.000	
				4" Clay Wye Connection	Comment: SEALED OFF					
10		22.0	Joint	Roots	3	0.008	5	8	0.008	
11		26.2	Joint	Roots	3	0.008	5	8	0.008	
12		30.2	Joint	Roots	3	0.008	5	8	0.008	
13		34.1	Joint	Roots	3	0.008	5	8	0.008	
14		38.2	Joint	Roots	3	0.008	5	8	0.008	
15		44.1	South	Wye Service	1	0.000	0	0	0.000	
				4" Clay Wye Connection	Comment: SEALED OFF					
16		51.7	South	Break-In Conn	2	0.002	0	0	0.002	
	9112 W BEKEMEYER			4" Break In Connection						
17		66.1	North	Wye Service	1	0.000	0	0	0.000	
				4" Clay Wye Connection	Comment: SEALED OFF					
18		70.4	Joint	Offset	3	0.010	20	0	0.010	
19		74.5	Joint	Roots	3	0.008	5	8	0.008	
20		76.2	North	Break-In Conn	4	0.008	60	0	0.008	
	9111 W MURDOCK			4" Break In Connection	Comment: FULL OF ROOTS					
21		77.3	Joint	Roots	3	0.008	5	8	0.008	

Television Inspection Master Report

5/15/2009

2:16 PM

US Structure: 4848-287 9101 W MURDOCK ST Date Insp: 10/15/2008 Basin: W06A
 DS Structure: 4848-286 9200 W BEKEMEYER ST Dir Televised: Up->Down

22	78.6	Joint		Roots	3	0.008	5	8	0.008
23	82.7	Joint		Roots	3	0.008	5	8	0.008
24	86.4	Joint		Roots	4	0.010	10	25	0.010
25	90.3	Joint		Roots	3	0.008	5	8	0.008
26	94.5	Joint		Roots	3	0.008	5	8	0.008
27	102.4	Joint		Roots	3	0.008	5	8	0.008
28	106.6	Joint		Roots	3	0.008	5	8	0.008
29	110.7	Joint		Roots	3	0.008	5	8	0.008
30	120.3	South	Wye Service / sealed off		1	0.000	0	0	0.000
31	128.5	Joint		Roots	3	0.008	5	8	0.008
32	132.6	Joint		Roots	4	0.010	10	25	0.010
33	139.7	South	Break-In Conn		2	0.002	0	0	0.002
9120 W BEKEMEYER				4" Break In Connection					
34	141.8	North	Break-In Conn		2	0.002	0	0	0.002
9121 W MURDOCK				4" Break In Connection					
35	146.6	North	Wye Service / sealed off		1	0.000	0	0	0.000
36	150.7	Upper Left	Infiltration		4	0.000	0	0	0.000
37	206.5	South	Break-In Conn		3	0.004	2	0	0.004
9126 W BEKEMEYER				4" Break In Connection					Comment: NEEDS REPAIR
38	212.6		Wye Service / Sealed off / infiltration		3	0.000	2	0	0.000
39	221.0	Lower Left / joint	Infiltration		3	0.000	0	0	0.000
40	225.1	Lower Left / joint	Infiltration		3	0.000	0	0	0.000
41	228.9	Joint		Roots	3	0.008	5	8	0.008
42	232.9	Joint		Offset	3	0.010	20	0	0.010
43	236.2	North	Break-In Conn		3	0.004	2	0	0.004
9201 W MURDOCK				4" Break In Connection					Comment: NEEDS REPAIR
44	241.1	Joint		Roots	3	0.008	5	8	0.008
45	245.1	Joint		Roots	3	0.008	5	8	0.008
46	246.1	North	Wye Service / sealed off / roots		2	0.000	0	0	0.000
47	251.1	Joint		Roots	3	0.008	5	8	0.008
48	255.0	Joint		Roots	3	0.008	5	8	0.008
49	259.0	Joint		Roots	3	0.008	5	8	0.008
50	271.5	Joint		Roots	2	0.004	2	4	0.004
51	275.2	Joint		Roots	3	0.008	5	8	0.008
52	283.5	Joint		Roots	3	0.008	5	8	0.008
53	293.5	South	Break-In Conn		3	0.004	2	0	0.004
9200 W BEKEMEYER				4" Break In Connection					Comment: Roots around perimeter of tap
54	295.3	Joint		Offset	3	0.010	20	0	0.010
55	295.4	Joint		Roots	3	0.008	5	8	0.008
56	302.0	DS Manhole	4848-286						

Television Inspection Master Report

5/15/2009

2:16 PM

US Structure: 4848-286 9200 W BEKEMEYER ST Date Insp: 10/15/2008 Basin: W06A
 Dir Televised: Up->Down

DS Structure: 4848-274 846 N MURRAY ST

Pipe Information

Shape: Round Length Status: Project No. : K-063
 Dia/Ht: 8 Material: VCP Index:
 Length: 294.0 Slope: 0.400 Surface:

Inspection Information

Crew: 690 Percent Full: DVD #0447
 Weather: Rainy Purpose: TV Existing Line Tape ID:
 Counter Start:

Obs. #	VTR Counter	Distance	Location	Description	Rating	Obsrvd (gpm)	Ratings			Remain (gpm)
							Est. (gpm)	Struct	Clean	
1		0.0	US Manhole	4848-286	1	0.000	0	0	0.000	
2		1.4	Joint	Offset / infiltration	3	0.010	20	0	0.010	
3		1.7	Upper Left	Crack-Radial	3	0.004	5	0	0.004	
4		7.0	South	Wye Service / sealed off	1	0.000	0	0	0.000	
5		23.6	Joint	Roots	3	0.008	5	8	0.008	
6		25.2	North	Wye Service / sealed off	1	0.000	0	0	0.000	
7		19.5	Joint	Roots	2	0.004	2	4	0.004	
8		29.6	Joint	Offset	2	0.000	0	0	0.000	
9		33.5	Joint	Offset	3	0.010	20	0	0.010	
10		35.0	North	Break-In Conn	3	0.004	2	0	0.004	
9211 W MURDOCK				4" Break In Connection	Comment: NEEDS REPAIR					
11		41.4	Joint	Roots	3	0.008	5	8	0.008	
12		49.6	Joint	Offset	3	0.010	20	0	0.010	
13		53.8	Joint	Roots	4	0.010	10	25	0.010	
14		57.8	Joint	Roots	4	0.010	10	25	0.010	
15		61.7	Joint	Roots	4	0.010	10	25	0.010	
16		64.1	South	Break-In Conn	3	0.004	2	0	0.004	
9212 W BEKEMEYER				4" Break In Connection	Comment: NEEDS REPAIR, ROOTS IN CONNECTION					
17		66.0	Joint	Roots	3	0.008	5	8	0.008	
18		67.6	South	Wye Service / sealed off	1	0.000	0	0	0.000	
19		75.9	Joint	Roots	3	0.008	5	8	0.008	
20		83.9	Joint	Roots	2	0.004	2	4	0.004	
21		87.9	Joint	Roots	4	0.010	10	25	0.010	
22		91.9	Joint	Roots	3	0.008	5	8	0.008	
23		95.7	Joint	Offset	3	0.010	20	0	0.010	
24		95.7	Joint	Roots	3	0.008	5	8	0.008	
25		97.5	North	Wye Service / sealed off	1	0.000	0	0	0.000	
26		97.7	Joint	Roots	3	0.008	5	8	0.008	

Television Inspection Master Report

5/15/2009

2:16 PM

US Structure: 4848-286
DS Structure: 4848-274

9200 W BEKEMEYER ST
846 N MURRAY ST

Date Insp: 10/15/2008
Dir Televised:Up->Down

Basin: W06A

27	102.0	Joint	Roots	3	0.008	5	8	0.008
28	103.1	North	Break-In Conn	3	0.004	2	0	0.004
9219 W MURDOCK			4" Break In Connection	Comment: NEEDS REPAIR, ROOTS IN CONNECTION.				
29	110.0	Joint	Roots	2	0.004	2	4	0.004
30	155.9	South	Wye Service 4" Clay Wye Connection	1	0.000	0	0	0.000
			Comment: SEALED OFF					
31	158.9	South	Break-In Conn	3	0.004	2	0	0.004
9220 W BEKEMEYER			4" Break In Connection	Comment: NEEDS REPAIR				
32	176.2	Joint	Roots	2	0.004	2	4	0.004
33	177.4	North	Wye Service 4" Clay Wye Connection	3	0.000	2	0	0.000
			Comment: SEALED OFF , ROOTS					
34	183.3	North	Break-In Conn	2	0.002	0	0	0.002
9227 W MURDOCK			4" Break In Connection					
35	248.0	South	Wye Service 4" Clay Wye Connection	1	0.000	0	0	0.000
			Comment: SEALED OFF					
36	250.1	South	Break-In Conn	3	0.004	2	0	0.004
9228 W BEKEMEYER			4" Break In Connection	Comment: NEEDS REPAIR				
37	270.1	North	Wye Service 4" Clay Wye Connection	1	0.000	0	0	0.000
			Comment: SEALED OFF					
38	273.6	North	Break-In Conn	3	0.004	2	0	0.004
9301 W MURDOCK			4" Break In Connection	Comment: NEEDS REPAIR				
39	304.4	DS Manhole 4848-274		1	0.000	0	0	0.000

Television Inspection Master Report

5/15/2009

2:14 PM

US Structure: 4848-285
DS Structure: 4848-284

9100 W BIRCH LN
9219 W BIRCH LN

Date Insp: 10/16/2008
Dir Televised: Up->Down

Basin: W06A

Pipe Information

Shape: Round	Length Status:	Project No. : K-063
Dia/Ht: 8	Material: VCP	Index:
Length: 370.0	Slope: 0.400	Surface:

Inspection Information

Crew: 690	Percent Full:	Tape ID: DVD #0447
Weather: Rainy	Purpose: TV Existing Line	Counter Start:

Obs. #	VTR Counter	Distance	Location	Description	Rating	Obsrvd (gpm)	Ratings			Remain (gpm)
							Est. (gpm)	Struct	Clean	
1		0.0	US Manhole 4848-285	MANHOLE HOLDING WATER due to offset joints	2					
2		4.0	Joint	Roots	3	0.008	5	8	0.008	
3		4.0	Joint	Offset	4	0.030	60	0	0.030	
4		5.0	South	Break-In Conn	4	0.008	60	0	0.008	
				9100 W MURDOCK	4" Break In Connection	Comment: NEEDS REPAIR / broken with roots				
5		6.0	Invert	Debris / heavy sand	3	0.000	0	0	0.000	
6		8.4	South	Wye Service / Sealed Off	1	0.000	0	0	0.000	
7		9.8	North	Wye Service	3	0.000	2	0	0.000	
				9101 W BIRCH	4" Clay Wye Connection	Comment: ROOTS				
UPSTREAM 10 LF NEEDS REPLACED PRIOR TO LINER INSTALLATION (INCLUDING REPLACEMENT OF 2 TAPS										

8		15.4	Joint	Offset	3	0.010	20	0	0.010	
9		24.4	Joint	Offset	4	0.030	60	0	0.030	
(utility pole & electric box over sewer preventing further pipe replacement to repair to this offset / should be OK to line through this)										
10		31.4	Joint	Roots	3	0.008	5	8	0.008	
11		35.3	Joint	Roots	3	0.008	5	8	0.008	
12		37.6	South	Wye Service	2	0.000	0	0	0.000	
				9112 W MURDOCK	4" Clay Wye Connection	Comment: ROOTS IN CONNECTION				
13		42.3	Joint	Roots	3	0.008	5	8	0.008	
14		57.0	North	Break-In Conn	3	0.004	2	0	0.004	
				9115 W BIRCH	4" Break In Connection	Comment: NEEDS REPAIR, ROOTS				
15		59.4	Joint	Roots	2	0.004	2	4	0.004	
16		59.9	North	Wye Service	1	0.000	0	0	0.000	
				4" Clay Wye Connection	Comment: SEALED OFF					
17		60.9	Joint	Roots	3	0.008	5	8	0.008	

Television Inspection Master Report

5/15/2009

2:14 PM

US Structure: 4848-285 9100 W BIRCH LN Date Insp: 10/16/2008 Basin: W06A
 DS Structure: 4848-284 9219 W BIRCH LN Dir Televised: Up->Down

57	282.7	South	Break-In Conn	4	0.008	60	0	0.008
9210 W MURDOCK			4" Break In Connection	Comment: NEEDS REPAIR				
58	283.8	Joint	Offset	3	0.010	20	0	0.010
59	284.4	Lower Right	Broken Pipe	3	0.010	60	0	0.010
60	289.8	South	Wye Service	1	0.000	0	0	0.000
			4" Clay Wye Connection	Comment: SEALED OFF				
61	293.7	Joint	Offset	2	0.000	0	0	0.000
62	293.7	Lower Right	Broken Pipe	3	0.010	60	0	0.010
63	299.7	North	Wye Service	1	0.000	0	0	0.000
9211 W BIRCH			4" Clay Wye Connection					
64	312.3	Joint	Roots	2	0.004	2	4	0.004
65	316.9	Joint	Roots	3	0.008	5	8	0.008
66	329.5	Joint	Roots	3	0.008	5	8	0.008
67	358.5	Lower Right	Crack-Horizontal	3	0.004	5	0	0.004
68	367.1	Lower Right	Broken Pipe	5	0.060	100	0	0.060
			Comment: TILE MISSING IN BOTTOM OF MANHOLE					
69	370.2	DS Manhole		1	0.000	0	0	0.000

Television Inspection Master Report

5/15/2009

2:14 PM

US Structure: 4848-284
DS Structure: 4848-275

9219 W BIRCH LN
912 N MURRAY ST

Date Insp: 10/16/2008
Dir Televised: Up->Down

Basin: W06A

Pipe Information

Shape: Round Length Status: Project No. : K-063
Dia/Ht: 8 Material: VCP Index:
Length: 300.0 Slope: 0.400 Surface:

Inspection Information

Crew: 690 Percent Full: Tape ID: DVD #0447
Weather: Rainy Purpose: TV Existing Line Counter Start:

Obs. #	VTR Counter	Distance	Location	Description	Rating	Obsrvd (gpm)	Ratings			Remain (gpm)
							Est. (gpm)	Struct	Clean	
1		0.0	US Manhole		1	0.000	0	0	0.000	
2		14.6	South	Break-In Conn	4	0.008	60	0	0.008	
	9216 W MURDOCK			4" Break In Connection	Comment:	NEEDS REPAIR				
3		18.6	South	Wye Service	1	0.000	0	0	0.000	
				4" Clay Wye Connection	Comment:	SEALED OFF				
4		18.8	North	Break-In Conn	4	0.008	60	0	0.008	
	9219 W BIRCH			4" Break In Connection	Comment:	NEEDS REPAIR				
5		19.2	Joint	Roots	4	0.010	10	25	0.010	
6		35.2	Joint	Roots	2	0.004	2	4	0.004	
7		38.7		Roots	3	0.008	5	8	0.008	
8		77.9	South	Wye Service	1	0.000	0	0	0.000	
				4" Clay Wye Connection	Comment:	SEALED OFF				
9		79.0	South	Break-In Conn	3	0.004	2	0	0.004	
	9224 W MURDOCK			4" Break In Connection	Comment:	NEEDS REPAIR				
10		97.4	Joint	Offset	2	0.000	0	0	0.000	
11		100.4	North	Wye Service	1	0.000	0	0	0.000	
	9227 W BIRCH			4" Clay Wye Connection						
12		119.8	Joint	Offset	3	0.010	20	0	0.010	
13		133.0	Lower Right	Debris / loose tile	5	0.000	0	75	0.000	
14		133.0	Joint	Offset	4	0.030	60	0	0.030	
15		140.7	Lower Right	Crack-Radial	3	0.004	5	0	0.004	
16		142.6	South	Break-In Conn	4	0.008	60	0	0.008	
	9300 W MURDOCK			4" Break In Connection	Comment:	NEEDS REPAIR				
17		146.1	South	Wye Service	1	0.000	0	0	0.000	
				4" Clay Wye Connection	Comment:	SEALED OFF				

Television Inspection Master Report

5/15/2009

2:14 PM

US Structure: 4848-284 9219 W BIRCH LN Date Insp: 10/16/2008 Basin: W06A
 DS Structure: 4848-275 912 N MURRAY ST Dir Televised: Up->Down

18	164.7	North	Break-In Conn	4	0.008	60	0	0.008
9301 W BIRCH			4" Break In Connection	Comment: NEEDS REPAIR				
19	169.0	North	Wye Service	1	0.000	0	0	0.000
			4" Clay Wye Connection	Comment: SEALED OFF				
20	185.0	Joint	Roots	3	0.008	5	8	0.008
21	201.3	Joint	Roots	2	0.004	2	4	0.004
22	206.3	Joint	Offset	4	0.030	60	0	0.030
				Comment: NEEDS REPAIR				
23	206.3	Lower Right	Broken Pipe	4	0.030	78	0	0.030
				Comment: NEEDS REPAIR				
24	214.3	Upper Left	Crack-Horizontal	3	0.004	5	0	0.004
25	214.3	Joint	Roots	3	0.008	5	8	0.008
26	225.6	Joint	Roots	2	0.004	2	4	0.004
27	233.9	Joint	Roots	2	0.004	2	4	0.004
28	237.6	Joint	Offset	3	0.010	20	0	0.010
29	239.0	Offset Joint	Roots	3	0.008	5	8	0.008
30	240.5	South	Break-In Conn	3	0.004	2	0	0.004
9310 W MURDOCK			4" Break In Connection	Comment: NEEDS REPAIR				
31	243.7	South	Wye Service	1	0.000	0	0	0.000
			4" Clay Wye Connection	Comment: SEALED OFF				
32	245.5	Joint	Roots	3	0.008	5	8	0.008
33	251.8	Joint	Roots	2	0.004	2	4	0.004
34	266.2	North	Wye Service	2	0.000	0	0	0.000
9311 W BIRCH			4" Clay Wye Connection	Comment: ROOTS				
	270.0		Sag begins'					
	290.0	Offset Joint	Sag ends at offset joint					
			Depth of sag was to bottom of lens					
35	297.8	DS Manhole 4848-275		1	0.000	0	0	0.000

Television Inspection Master Report

5/15/2009

1:20 PM

US Structure: 4848-275 912 N MURRAY ST Date Insp: 10/2/2006 Basin: W06A
 DS Structure: 4848-274 846 N MURRAY ST Dir Televised: Upstream To Downstream

Pipe Information

Shape: Round Length Status: Project No. : K-063
 Dia/Ht: 8 Material: VCP Index:
 Length: 310.0 Slope: 0.400 Surface:

Inspection Information

Crew: 694 Percent Full: 0 Tape ID: DVD #0196
 Weather: Sunny Purpose: TV Existing Line Counter Start:

Obs. #	VTR Counter	Distance	Location	Description	Rating	Obsrvd (gpm)	Ratings			Remain (gpm)
							Est. (gpm)	Struct	Clean	
1		0.0	US Manhole	4848-275	1		0.000	0	0	0.000
2		14.2	West	Break-In Conn	4		0.000	0	0	0.000
912 NORTH MURPHY / roots										
3		17.4		Sealed Off Wye West	1		0.000	0	0	0.000
4		87.6		Sealed Off Wye West	1		0.000	0	0	0.000
5		97.0	Upper Right	Broken Pipe	3		0.000	0	0	0.000
6		98.0	West	Break-In Conn	1		0.000	0	0	0.000
900 NORTH MURPHY / protrudes slightly										
7		105.2	Invert	Crack-Horizontal	3		0.000	0	0	0.000
8		116.6	Start	Sag starts	4		0.000	10	0	0.000
9		138.6	End (water was not over the camera lens)	Sag ends	2		0.000	2	0	0.000
10		190.7	Start	Sag starts	3		0.000	5	0	0.000
11		194.1	Crown	Broken Pipe	4		0.000	0	0	0.000
12		196.9	End (not bad)	Sag ends	1		0.000	1	0	0.000
13		250.9		Sealed Off Wye West	3		0.003	0	0	0.003
14		262.5	Start	Sag starts	3		0.000	5	0	0.000
15		271.7	Upper Left	Crack-Horizontal	2		0.000	0	0	0.000
16		271.7	End	Sag ends	1		0.000	1	0	0.000
17		273.7	West	Break-In Conn	4		0.000	0	0	0.000
854 NORTH MURPHY / roots										
18		280.0	Start	Sag starts	3		0.000	5	0	0.000
19		299.0	Joint	Roots	3		0.008	5	8	0.008
20		303.8	End (OK to line this sag)	Sag ends	1		0.000	1	0	0.000
21		307.7		Sag	2		0.000	2	0	0.000
22		308.0	DS Manhole	4848-274	1		0.000	0	0	0.000



Television Inspection Master Report

5/15/2009

1:20 PM

US Structure: 4848-274 846 N MURRAY ST Date Insp: 10/2/2006 Basin: W06A
 Dir Televised: Upstream To Downstream

DS Structure: 4848-273 9229 W BEKEMEYER ST

Pipe Information

Shape: Round Length Status: Project No. : K-063
 Dia/Ht: 8 Material: VCP Index:
 Length: 353.0 Slope: 0.400 Surface:

Inspection Information

Crew: 694 Percent Full: 0 Tape ID: DVD #0196
 Weather: Sunny Purpose: TV Existing Line Counter Start:

Obs. #	VTR Counter	Distance	Location	Description	Rating	Obsrvd (gpm)	Ratings			Remain (gpm)
							Est. (gpm)	Struct	Clean	
1		0.0	US Manhole	4848-274	1		0.000	0	0	0.000
2		23.5	West	Break-In Conn	1		0.000	0	0	0.000
846 NORTH MURPHY										
3		24.6		Sealed Off Wye West	1		0.000	0	0	0.000
4		55.2	Upper Right	Broken Pipe	3		0.000	0	0	0.000
5		103.6		Sealed Off Wye West	1		0.000	0	0	0.000
6		114.1	Joint	Roots	3		0.008	5	8	0.008
7		126.1	West	Break-In Conn	1		0.000	0	0	0.000
838 NORTH MURPHY										
8		147.6	Joint	Roots	3		0.008	5	8	0.008
9		156.0	Joint	Roots	3		0.008	5	8	0.008
10		163.9	Joint	Roots	4		0.010	10	25	0.010
11		167.6	Joint	Offset	3		0.000	0	0	0.000
12		250.1	West	Break-In Conn	3		0.000	0	0	0.000
822 NORTH MURPHY / roots										
13		252.9		Sealed Off Wye West	1		0.000	0	0	0.000
14		321.7		Sealed Off Wye West	1		0.000	0	0	0.000
15		340.8	West	Break-In Conn	1		0.000	0	0	0.000
814 NORTH MURPHY										
16		340.8	Lower Left	Broken Pipe	3		0.000	0	0	0.000
17		343.4	Upper Left	Broken Pipe	3		0.000	0	0	0.000
18		351.0	DS Manhole		1		0.000	0	0	0.000

Comment: SMALL INSIDE DROP.