

MH # 5948-378
Approx depth = 9.6 ft

MH # 5948-377
Approx depth = 10.6 ft

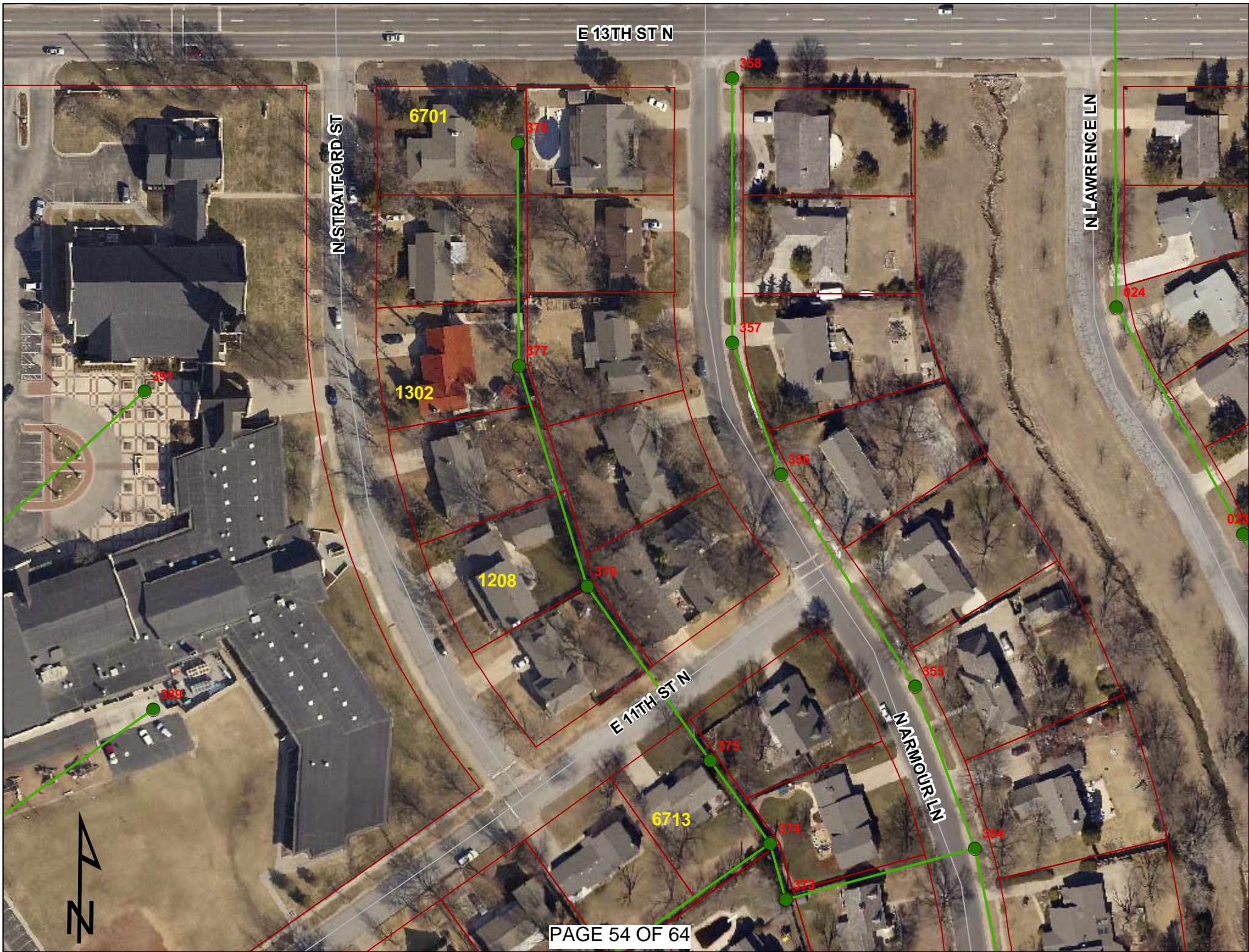
MH # 5948-376
Approx depth = 9.7 ft

MH # 5948-375
Approx depth = 8.7 ft

Install 581 lf of 8" Cured-in-Place Liner

See notes on tv logs. Pipe has mineral deposits at some of the joints. Contractor shall knock-down mineral deposits prior to liner installation. Extra cost shall be incidental to the liner installation.







Television Inspection Master Report

1/20/2010

1:20 PM

US Structure: 5948-378
DS Structure: 5948-377

6701 E 13TH ST
1302 N STRATFORD LA

Date Insp: 5/26/2009
Dir Televised: Upstream To Downstream

Basin: E03B

Pipe Information

Shape: Round
Dia/Ht: 8
Length: 194.4

Material: VCP
Slope: 0.400

Project No. : J-051
Index:
Surface:

Inspection Information

Crew: 694

Tape ID: DVD #0490

Obs. #	VTR Counter	Distance	Location	Description	Rating	Obsrvd (gpm)	Ratings			Remain (gpm)
							Est. (gpm)	Struct	Clean	
1		0.0	6701 EAST 13TH ST NORTH	5948-378 US Manhole	1	0.000	0	0	0.000	
2		20.5		Roots	3	0.008	5	8	0.008	
3		21.8	6701 EAST 13TH ST NORTH	W Wye Service	2	0.000	0	0	0.000	
4		31.9	1315 NORTH ARMOUJR	E Wye Service	1	0.000	0	0	0.000	
5		57.5		Roots	3	0.008	5	8	0.008	
6		115.4	1307 NORTH ARMOUR	E Wye Service	4	0.000	60	0	0.000	
7		145.8	1308 NORTH STRATFORD	W Wye Service	2	0.000	0	0	0.000	
8		192.0		Broken Pipe	3	0.010	60	0	0.010	
9		194.5	1302 NORTH STRATFORD	5948-377 DS Manhole	1	0.000	0	0	0.000	

This segment is in good condition.

Television Inspection Master Report

1/20/2010

1:20 PM

US Structure: 5948-377 1302 N STRATFORD LA Date Insp: 5/27/2009 Basin: E03B
 DS Structure: 5948-376 1208 N STRATFORD LA Dir Televised: Upstream To Downstream

Pipe Information

Project No. : J-051 Dia/Ht: 8 Material: VCP Length: 199.6 Slope: 0.012 Crew: 694 Tape ID: DVD #0490

Obs. #	VTR Counter	Distance	Location	Description	Rating	Obsrvd (gpm)	Ratings			Remain (gpm)
							Est. (gpm)	Struct	Clean	
1		0.0		US Manhole 5948-377	1		0.000	0	0	0.000
2		6.2		Roots	3		0.008	5	8	0.008
3		18.3		Roots	3		0.008	5	8	0.008
4		19.4		Wye Service	4		0.000	60	0	0.000
1302 NORTH STRATFORD										
5		24.7		Roots	3		0.008	5	8	0.008
6		28.8		Other	3		0.000	0	0	0.000
7		32.6		Other	3		0.000	0	0	0.000
8		37.8		Wye Service	1		0.000	0	0	0.000
1301 NORTH ARMOUR										
9		55.0		Other	3		0.000	0	0	0.000
10		67.1		Other	3		0.000	0	0	0.000
11		87.1		Other	3		0.000	0	0	0.000
12		91.0		Other	3		0.000	0	0	0.000
13		96.1		Break-In Conn	1		0.001	0	0	0.001
1214 NORTH STRATFORD										
14		101.6		Other	3		0.000	0	0	0.000
15		105.7		Other	3		0.000	0	0	0.000
16		109.9		Other	4		0.000	0	0	0.000
17		113.7		Other	3		0.000	0	0	0.000
18		118.0		Other	3		0.000	0	0	0.000
19		122.3		Other	3		0.000	0	0	0.000
20		126.6		Other	3		0.000	0	0	0.000
21		130.3		Other	3		0.000	0	0	0.000
22		134.6		Other	3		0.000	0	0	0.000
23		136.5		Stopped Inspection Due to Mineral Deposit	4		0.000	0	0	0.000

SEE REVERSE SETUP

“OTHER” = MINERAL DEPOSIT

MINERAL DEPOSITS NEED BLADED DOWN PRIOR TO LINING, COST INCIDENTAL TO THE CIPP INSTALLATION

Television Inspection Master Report

1/20/2010

1:20 PM

US Structure: 5948-377 1302 N STRATFORD LA Date Insp: 5/27/2009 Basin: E03B
 DS Structure: 5948-376 1208 N STRATFORD LA Dir Televised:Upstream To Downstream

REVERSE SETUP:

Obs. #	VTR Counter	Distance	Location	Description	Rating	Obsrvd (gpm)	Ratings			Remain (gpm)
							Est. (gpm)	Struct	Clean	
1		0.0		DS Manhole 5948-376	1		0.000	0	0	0.000
TV AGAINST THE FLOW										
2		0.0		Continued Inspection	1		0.000	0	0	0.000
3		19.5		HEAVY ROOTS	4		0.010	10	25	0.010
4		21.4		Wye Service	3		0.000	2	0	0.000
1208 NORTH STRATFORD										
5		34.0		Other	3		0.000	0	0	0.000
6		38.0		Other	3		0.000	0	0	0.000
7		42.4		Other	4		0.000	0	0	0.000
8		49.8		Wye Service	1		0.000	0	0	0.000
1209 NORTH ARMOUR										
9		53.7		Other	3		0.000	0	0	0.000
10		57.2		Other	3		0.000	0	0	0.000
11		61.8		Other	4		0.000	0	0	0.000
12		64.0		Stopped Inspection	3		0.000	0	0	0.000

“OTHER” = MINERAL DEPOSIT

MINERAL DEPOSITS NEED BLADED DOWN PRIOR TO LINING, COST INCIDENTAL TO THE CIPP INSTALLATION

Television Inspection Master Report

1/20/2010

1:20 PM

US Structure: 5948-376 1208 N STRATFORD LA Date Insp: 2/27/2009 Basin: E03B
 DS Structure: 5948-375 6713 E 11TH ST Dir Televised: Downstream To Upstream

27	120.0		Roots	4	0.010	10	25	0.010
28	123.8		Heavy Roots	4	0.010	10	25	0.010
29	127.8		Roots	2	0.004	2	4	0.004
30	135.9		Roots	3	0.008	5	8	0.008
31	140.6	East	Wye Service	1	0.000	0	0	0.000
Faces 1201 NORTH ARMOUR LANE								
32	140.8		Roots	3	0.008	5	8	0.008
33	144.4		Roots	3	0.008	5	8	0.008
34	148.9		Roots	3	0.008	5	8	0.008
35	152.3		Roots	3	0.008	5	8	0.008
36	157.2		Roots	2	0.004	2	4	0.004
37	160.8		Roots	3	0.008	5	8	0.008
38	164.5		Roots	3	0.008	5	8	0.008
39	169.0		Roots	2	0.004	2	4	0.004
40	175.9	East	Break-In Conn	3	0.004	2	0	0.004
Faces 1201 NORTH ARMOUR								
41	181.2		Roots	3	0.008	5	8	0.008
42	187.5		US Manhole 5948-376	1	0.000	0	0	0.000

Showing 3 possible taps for 1201 Armour / needs verified by contractor, may not all be active.