

**CONCRETE PATH**

Transverse contraction joints to be spaced 10' on center.  
Expansion joints to be placed at maximum 100' spacing and at beginning of pouring cycles.

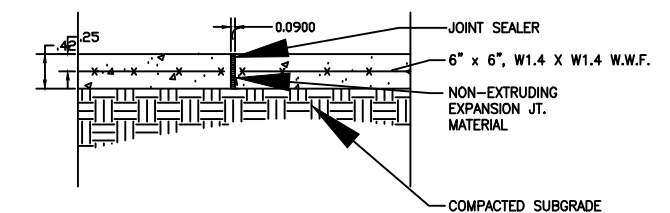
\* Right Slope Right is illustrated. Construct left slope in mirrored fashion as terrain dictates. The transition cross slope along a minimum slope of 20', but lengthen transition to ensure no longitudinal or perpendicular slope exceeds 5%.

**Aggregate Base Notes:**

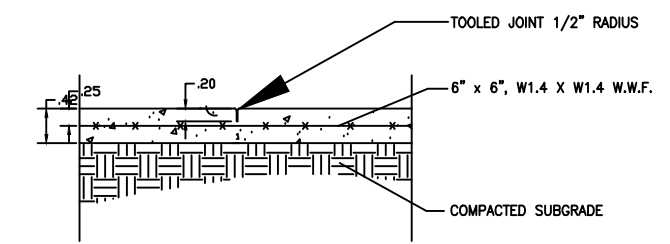
Aggregate Base shall use the existing rail bed material. Base grading and manipulation shall be subsidiary to the concrete path. The Aggregate Base shall be compacted and smoothed with a steel faced roller prior to placement of the pavement.

**Backfill Notes:**

Backfill shall be provided by the contractor, and shall be clean Top Soil hauled in from another location. No material originating on this site can be used for backfill and must be disposed of at an approved site in accordance with KDHE regulations.




**EXPANSION JOINT**  
● 100'-0" O.C. BOTH WAYS



**CONTRACTION JOINT**  
PLACE CONTRACTION JOINTS AT DISTANCE EQUAL TO WIDTH OF WALK

**JOINT DETAIL FOR CONCRETE PATH**

 <p><b>CITY OF WICHITA</b> PUBLIC WORKS <b>ENGINEERING</b></p>	<p><b>RED BUD</b> <b>MULTI-USE PATH</b> <b>TYPICAL DETAIL</b></p>	
	<p>CITY ENGINEER <b>JAMES L. ARMOUR, P.E., L.S.</b></p>	
	<p>PROJECT NUMBER <b>XXX-XXXX</b></p>	<p>OCA NUMBER <b>XXXXXX</b></p>
	<p>CITY ENGINEER'S OFFICE CITY HALL - SEVENTH FLOOR 405 NORTH MAIN STREET WICHITA, KANSAS 67202-1820 (316) 266-4501</p>	
		<p>DATE <b>08/10</b></p>
		<p>SHEET <b>X OF X</b></p>