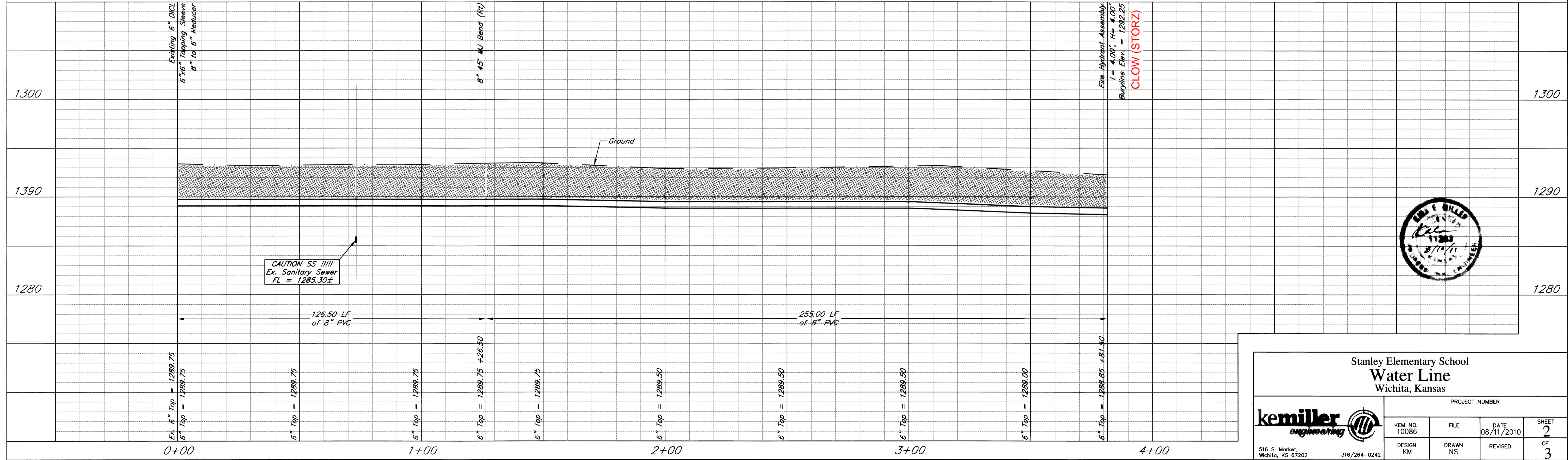
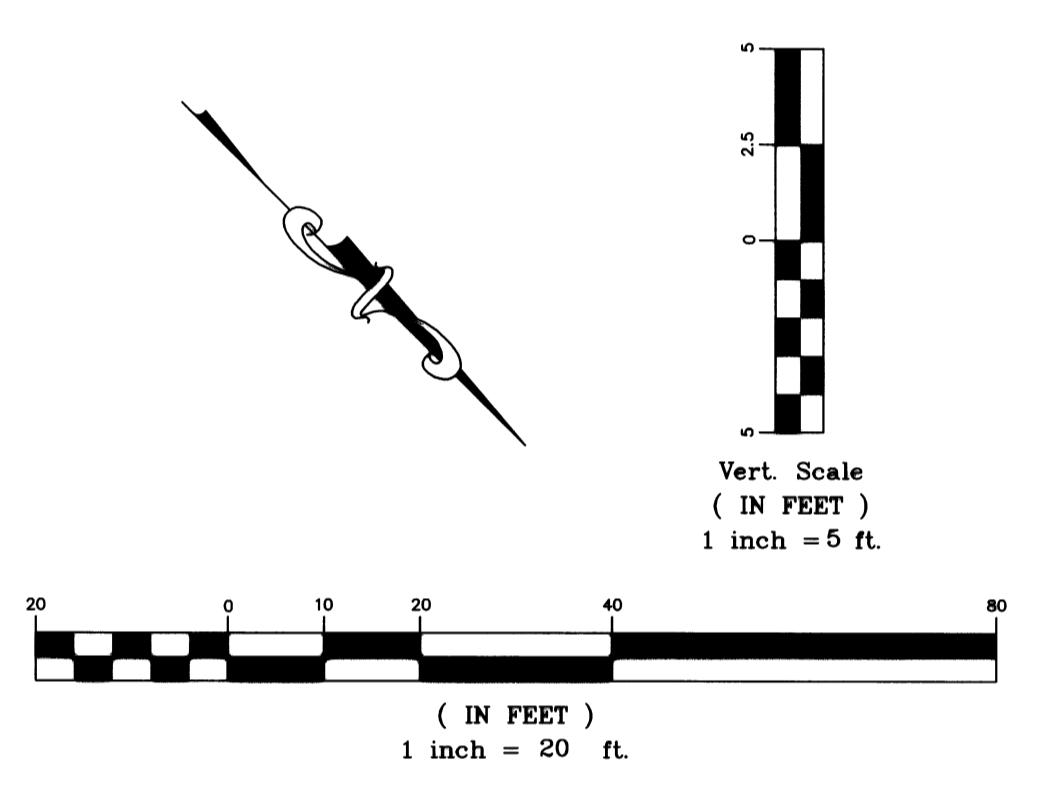


- Notes:
- Proposed 8" PVC to cross at a distance greater than 2.0 feet above existing sanitary sewer, while maintaining the minimum depth requirements.
  - If unable to meet depth requirements causing proposed 8" PVC to be less than 2.0' over, or proposed water line being placed under existing sanitary sewer, existing sanitary sewer to be incased at a minimum distance of 10.0 feet on both sides of the intersection.



Stanley Elementary School  
Water Line  
Wichita, Kansas

**kemiller engineering**

PROJECT NUMBER	KEW NO. 10086	FILE	DATE 08/11/2010	SHEET 2 OF 3
DESIGN KM	DRAWN NS	REVISED		

516 S. Market, Wichita, KS 67202 316/264-0242