

**2010 Sanitary Sewer Reconstruction
Phase 3
OCA # 620562 / 468-84703**

Project
Location

Meridian

13th St. North

13th St. North

McLean Blvd

Amidon

North River Blvd

Woodrow

Leurett

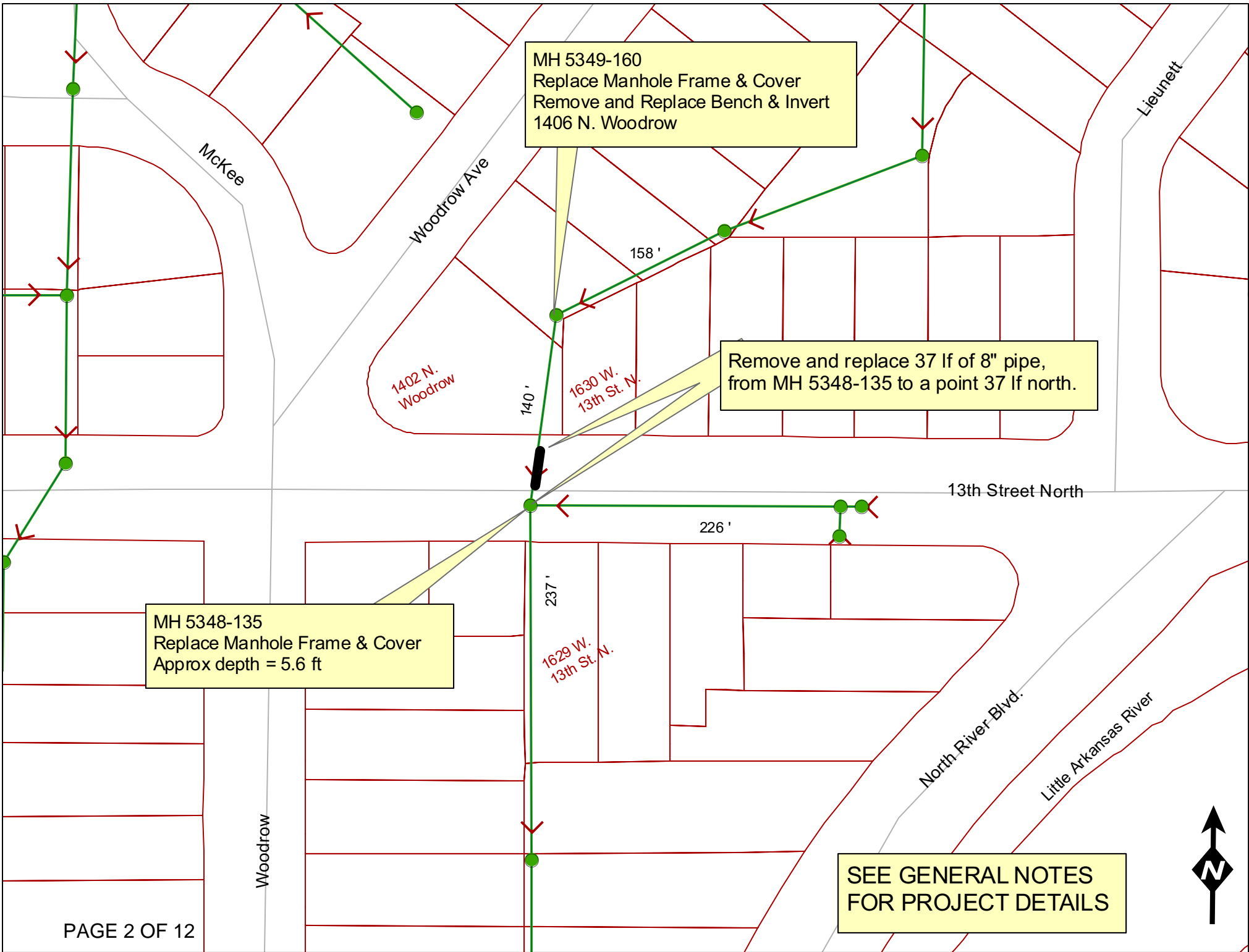
Garland

Big Arkansas River

Little
Arkansas
River

11th St. N.







W MCKEE AVE

N WOODROW AVE

W 13TH ST N

1406

1402

1626

1630

1631

1629

1615

GENERAL NOTES

- 1) Use C-900 pipe for the repair. Use a cascade coupling, per City Specifications.
- 2) Pavement removal and replacement shall be included in the bid item for Site Restoration. Pavement replacement shall be in like kind to existing pavement.
- 3) Sidewalk removal and replacement, if necessary, shall be included in the bid item for Site Restoration.
- 4) Flowable Fill shall be included in the bid item for Site Restoration.
- 5) See storm water sewer plans included in this project for reference. Storm pipe lies below the sanitary sewer. There is an abandoned storm pipe there also.
- 6) Contractor must maintain one lane of traffic in each direction. Traffic control must conform to the applicable requirements of the Uniform Traffic Control Manual and to the general traffic specifications in the City of Wichita Standard Specifications.
- 7) Contractor shall submit a Traffic Control Plan to the Field Engineer and to Mickey Thull in the Engineering Division of Public Works, at least one week prior to beginning of construction. Traffic Control will be paid as a separate bid item.

Television Inspection Master Report

8/23/2010

1:32 PM

US Structure: 5349-160
DS Structure: 5348-135

1406 N WOODROW ST
1631 W 13TH ST

Date Insp: 5/5/2010
Dir Televised: Upstream To Downstream

Basin: C03E

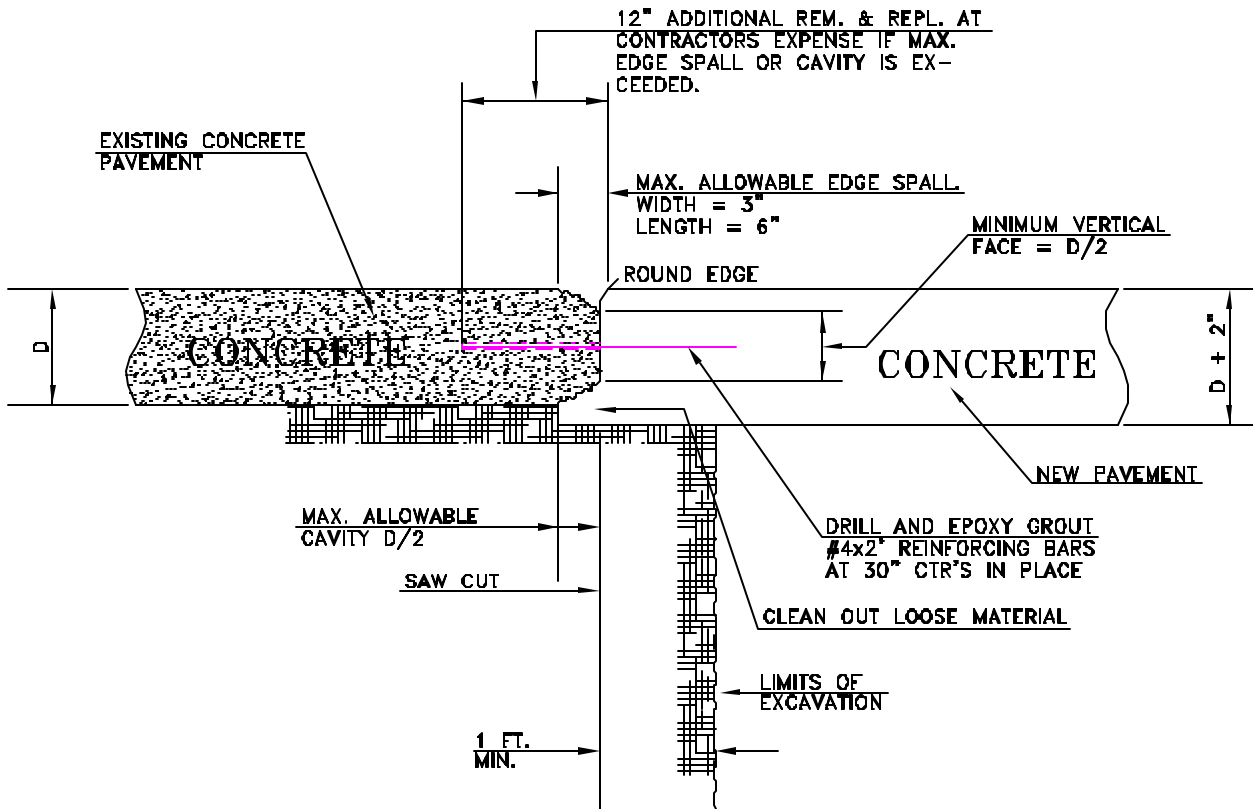
Pipe Information

Project No. : B-241 Dia/Ht: 8 Material: VCP Length: 140.0 Slope: 0.400 Tape ID: DVD #0574

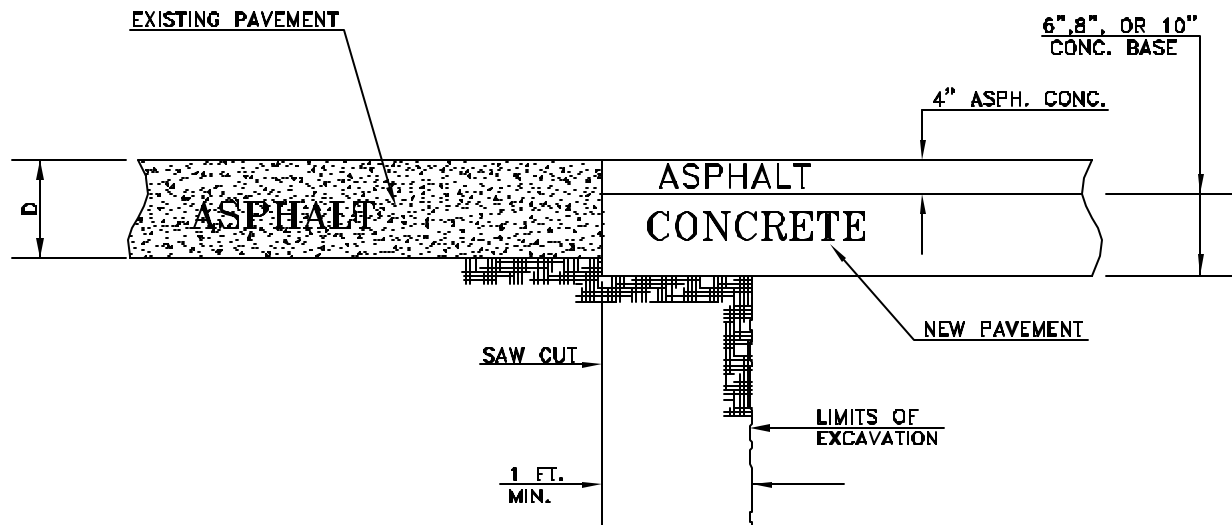
Obs. #	VTR Counter	Distance	Location	Description	Rating	Obsrvd (gpm)	Ratings			Remain (gpm)
							Est. (gpm)	Struct	Clean	
1		0.0		5349-160 / US Manhole						
2		3.2		Sealed Off Wye	1	0.000	0	0	0.000	
3		24.2	E	Break-In Conn	3	0.004	2	0	0.004	
1630 W 13TH ST N										
4		25.4		Crack-Radial	1	0.001	1	0	0.001	
5		35.8		Crack-Radial	1	0.001	1	0	0.001	
6		48.5		Crack-Radial	2	0.002	2	0	0.002	
7		49.8	W	Wye Service	1	0.000	0	0	0.000	
1402 N WOODROW										
8		56.9		Crack-Radial	1	0.001	1	0	0.001	
9		65.9	W / protrudes slightly	Sealed Off tap	5	0.000	0	0	0.000	
10		66.0	Hole in crown / pipe missing / patched	Broken Pipe	5	0.060	100	0	0.060	
11		80.6	Hole in crown / pipe missing / patched	Broken Pipe	5	0.060	100	0	0.060	
12		91.9	W / protrudes slightly	Sealed Off tap	3	0.000	0	0	0.000	
13		98.0	Hole in crown / pipe missing / patched	Broken Pipe	5	0.060	100	0	0.060	
13		105.0		Mat'l Chngs to Ductile Iron (corroded DIP)	2	0.000	0	0	0.000	
15		107.6		Sag begins	5	0.000	25	0	0.000	
16		115.9		Mat'l Chngs back to VCP	1	0.000	0	0	0.000	
21		119.8	Joint / pipe angles downward	Offset Joint	5	0.060	100	0	0.060	
22		122.5	Joint / FULL TILE SAG	Offset	4	0.030	60	0	0.030	
18		123.7	Camera emerges from water	Sag ends	1	0.000	1	0	0.000	
19		132.8		Broken Pipe	2	0.008	44	0	0.008	
20		137.3		5348-135 / DS Manhole (manhole has not been inspected)						

REPLACE FROM 102' TO MANHOLE WALL TO CORRECT GRADE AND REMOVE CORRODED DUCTILE IRON. (APPROX. 35 LF)

SEE GENERAL NOTES.



UTILITY CUT REPAIR (CONCRETE PAVEMENT REMOVAL EDGE DETAIL)



UTILITY CUT REPAIR (FULL DEPTH ASPHALT CONCRETE PATCH)