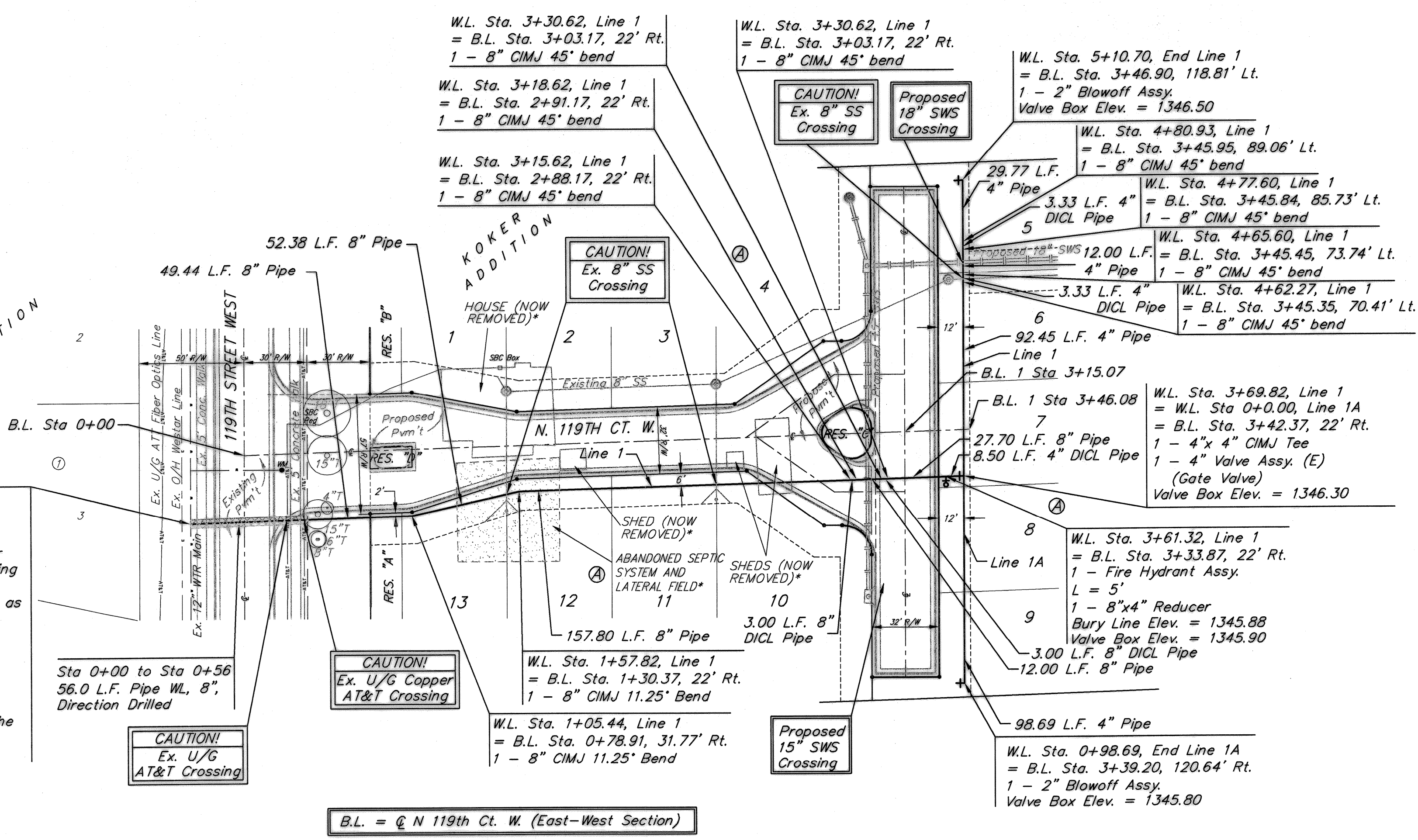


BENCHMARKS
 BM #1: City of Wichita Benchmark
 Disc - 119th St. W & Lost Creek
 (Cowskin) 175' ± north of Lost
 Creek Circle, SW corner of RCB,
 South end of Huguard. Elev. =
 1339.22 (NGVD29)

BM #2 "□" cut in the top of the
 curb adjacent to fire hydrant. East
 of house #927. Elev. = 1342.13
 (NGVD29)

W.L. Sta. 0+00, Begin Line 1
 = B.L. Sta. 0-26.53, 31.77' Rt.
 Connect to Existing 12" Water Line
 and Extend 8" Pipe West. Contractor
 to Verify Depth and Location of Existing
 12" Water Line Prior to Construction.
 Remove and replace existing sidewalk as
 necessary, cost to be included in bid
 item "Site Restoration." Also, see
 separate seeding note on sheet 4.
 * 1 - 12" x 8" Tapping Sleeve
 * X - 8" Tapping Valve
 * X - 6" Valve Box
 (* To be furnished and installed by the
 City of Wichita Water Department)
 Valve Box Elev. = 1345.10

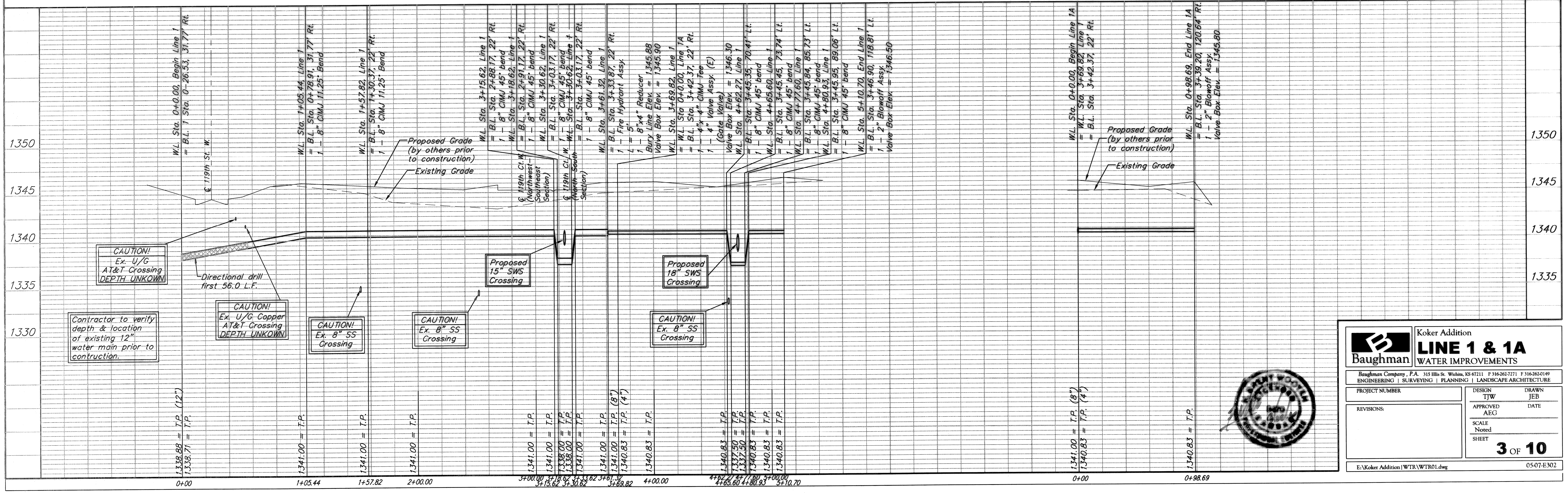


B.L. = @ N 119th Ct. W. (East-West Section)

* SITE LOCATION PREVIOUSLY HAD HOUSE, SHED, DRIVE,
 SEPTIC SYSTEM, ETC. HOUSE AND SHED WERE SCRAPED
 AND FOUNDATIONS AND CELLARS WERE CAVED IN.
 SEPTIC SYSTEM WAS ABANDONED IN PLACE AND IS
 SHOWN IN A LOCATION DESCRIBED BY THE OWNER. SOME
 RUBBLE AND UNDERGROUND FACILITIES MAY STILL BE
 PRESENT IN THE PATH OF CONSTRUCTION AND SHOULD
 BE ACCOUNTED FOR IN THE "SITE CLEARING" BID ITEM.

Scale:
 1" = 40' Horizontal
 1" = 5' Vertical
 • = Iron

Remove trees only as necessary
 for sanitary sewer construction
 and only with permission of
 Developer or Baughman Co.
 Cost of removal to be incidental
 to lump sum bid item "Site
 Clearing".



Baughman		Koker Addition	
		LINE 1 & 1A	
		WATER IMPROVEMENTS	
Baughman Company, P.A. 315 Ellis St. Wichita, KS 67211 F 3162637271 F 3162620149			
ENGINEERING SURVEYING PLANNING LANDSCAPE ARCHITECTURE			
PROJECT NUMBER	DESIGN	DRAWN	
	TJW	JEB	
REVISIONS:	APPROVED	DATE	
	AEG		
	SCALE	Noted	
	SHEET	3 OF 10	
E:\Koker Addition\WTR\WTR01.dwg			05-07-E302