

BENCHMARKS

C.O.W. Disc SE Corner West St. & 47th S.
Elev. = 92.29 (City Datum)

RR Spike in N. face of power pole, SE
Corner 47th So. & Kessler
Elev. = 91.74 (City Datum)

□ Cut in Top of Curb Adjacent to the
NW Corner Lot 27, Block C.
Elev. = 93.57 (City Datum)

SHEET INDEX

Title Sheet	1
Line 1, 1A, & 1B	2-6
Line 2 & 2A	7-8
Standard Manhole Detail	10
Shallow Manhole Detail	11
Ring & Cover Detail	12
Vertical Riser Detail	13
Clean Out Detail	14
Erosion Control Plan	15-16
Erosion Control BMPs	17-20
Coordinate Sheet	21
Copy of Plat	22

LATERAL 534, SOUTHWEST INTERCEPTOR SEWER

to serve

ANGEL FIRE - PHASE II
CITY OF WICHITA, KANSAS

Jim Armour, P.E. City Engineer

Project Number

468-84668

O.C.A. Number:

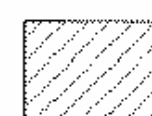
~~766251~~ 744311

Duling Construction - Contractor
J. Terhune - City of Wichita, Field Project Engineer
M. Sholander - City of Wichita, Inspector
As-built
Stubs and Risers
Release Date: 09/18/2010
pdf: APRosas 09/30/2010

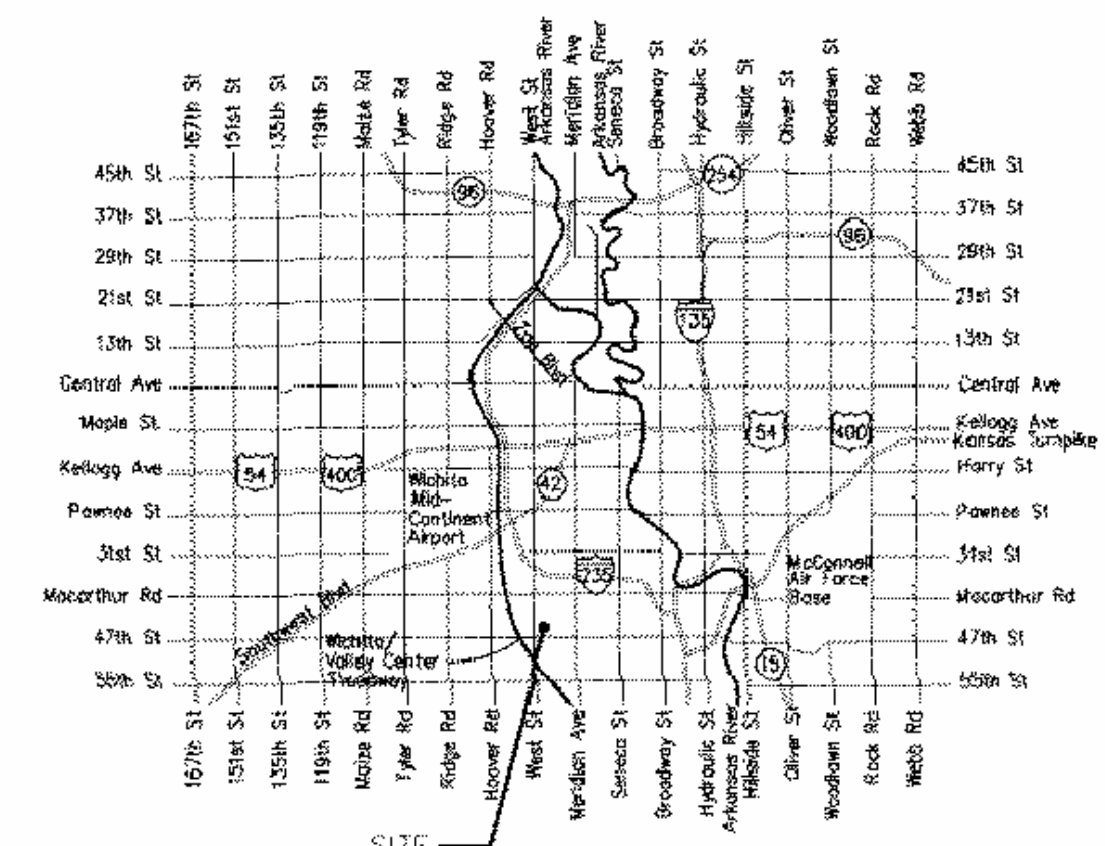
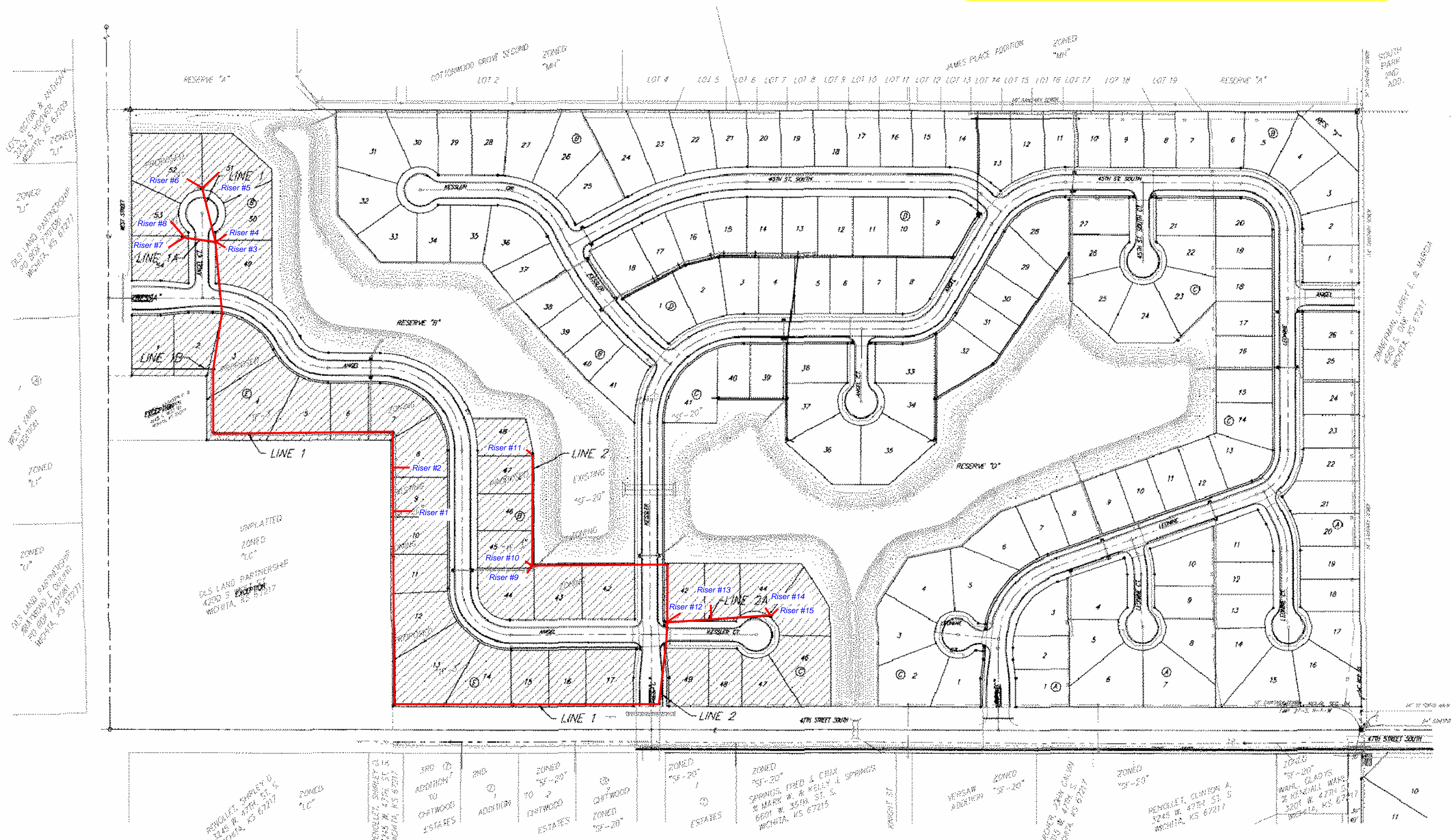
GENERAL NOTES

- Contractor will be required to provide notice to utility companies a minimum of forty-eight (48) hours prior to any excavation, as follows:
Kansas One-Call 587-2470
The Contractor must notify the following in case of an emergency:
Cox Communications 262-4270
Kansas Gas Service 1-888-482-4950
Westar Energy 383-8650
Black Hills Energy 1-800-303-0357
AT&T 268-2245
City of Wichita Water Dept. 268-4563
City of Wichita Sewer Maint. 268-4024
City of Wichita Storm Sewer Maint. 268-4090
City of Wichita Traffic Maint. 268-4034
- Utility service lines, poles, valve boxes, meters, and etcetera are to be adjusted as necessary by others prior to construction unless the plans specifically call for their adjustment by the Contractor or unless the plans specifically identify a utility to be adjusted by its owner during construction. Existing utilities and their location, as shown on the plans, represent the best information obtainable for design. The Contractor will be required to work around existing utilities within the right-of-way which do not conflict with proposed construction.
- Rubble from the removal of miscellaneous structures and excess excavation which is to be wasted shall be disposed of on sites to be provided by the Contractor. These sites shall be approved by the Engineer as to suitability, appearance and site location. Locations, in the opinion of the Engineer, that will leave an unsightly appearance will not be approved. All disposal sites must be approved by the Kansas Department of Health and Environment. Material either stockpiled or disposed of in a flood plain would require a Kansas State Board of Agriculture permit. Any material dumped in waters of the United States or wetlands is subject to U.S. Corps of Engineers permitting regulations. Any material buried or stockpiled beyond approved construction limits would require additional archaeological investigations unless buried in a previously approved borrow location.
- Trees and shrubs in public right-of-way which are in direct conflict with proposed new construction shall be removed by the Contractor. Trees and shrubs which are not in direct conflict with proposed new construction shall be saved and protected from damage.
- The Contractor shall give all property owners and/or tenants of developed property abutting the construction of this project a minimum of ten (10) days notice prior to start of construction.
- The Contractor shall be responsible for preserving property irons. The Contractor will be required to re-establish any property irons which are damaged or destroyed by his construction operations. Such irons shall be re-established by a licensed land surveyor in accordance with state laws.
- All existing and proposed erosion control measures including silt fencing, erosion control mat, straw bales, inlet barriers, and const. entrance shall be maintained throughout construction by the contractor and until project is accepted by the City of Wichita. The on-site engineer shall complete weekly reports on the status of erosion control measures. The contractor shall be required to comply with maintenance and/or replacement of erosion control measures as determined by the on-site engineer until project is accepted by City of Wichita. Maintenance and/or replacement of erosion control measures to be paid by L.S. bid item "Site Clearing & Restoration."
- The Contractor shall be responsible for maintaining continuous flow of sewage through construction. Contractor's proposed method for maintaining sewage flow shall be approved by the Engineer. Cost of maintaining flow of sewage through construction will not be paid for directly and this cost shall be considered as subsidiary to the other pay items of work.
- Contractor shall grade around exposed manholes at a 1:1 slope. Manholes set lower than existing grade shall have a 9" berm constructed around manhole to prevent infiltration into sanitary sewer system. Cost of dirt, labor, equipment, etc. to be incidental to cost of manhole. Easements shall be graded with the Street Paving project.
- Following construction, all disturbed areas shall be regraded and restored to preconstruction grades. Any excess earth remaining from excavation shall be spread or stockpiled on-site at a location to be determined by the engineer.
- All areas disturbed during construction shall be seeded at 300 lbs./acre with Rye Grass immediately following construction in that area. Contractor shall prepare ground per City of Wichita Specifications. All costs associated with seeding shall be included in bid item "Project Seeding"
- The developer for this project is Mike Brand (316)942-2306

Benefit District:



Scale: 1" = 150'



Vicinity Map

