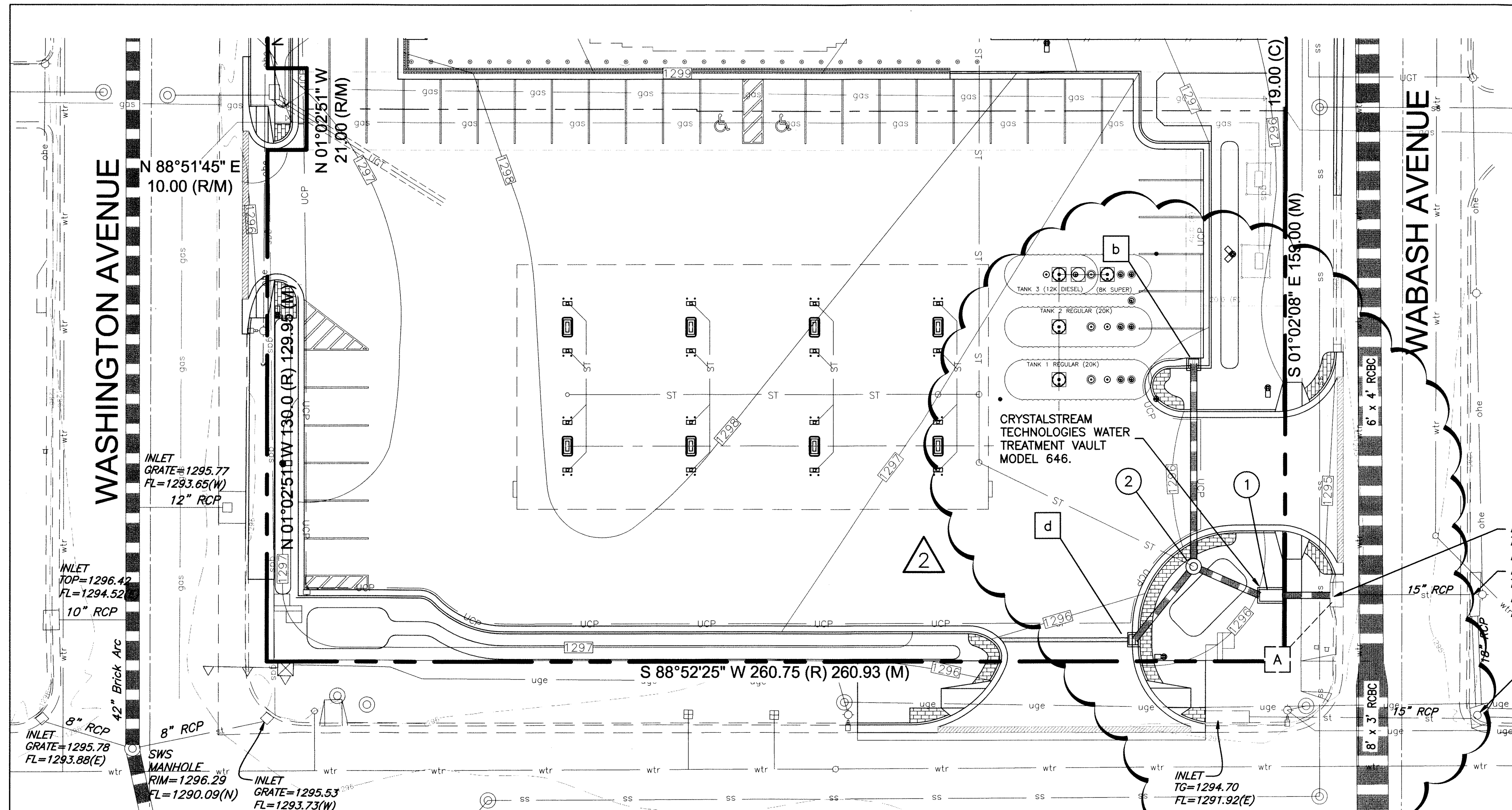


C:\TEMP\TEMP_AcPublish_2516_386R_Base.dwg - IPC - Storm - Apr 21, 2010 - 2:52pm - Bobby



INSTALLATION
PIPE BEDDING SHALL BE IMPROVED TYPE 1 OR TYPE 2 PER SECTION 801.2 AND 801.3 (FLEXIBLE PIPE) OF THE STANDARD SPECIFICATIONS WITH THE FOLLOWING MODIFICATION: IMPROVED BEDDING SHALL BE PLACED A MINIMUM OF SIX INCHES (6") UNDER THE BARREL OF THE PIPE TO TWELVE INCHES (12") ABOVE THE PIPE, OR TO WITHIN TWO FEET (2') OF FINAL GRADE, WHICHEVER IS GREATER.

TESTING
THE CONTRACTOR SHALL TELEVIEW AND MANHOLE THE HOPE PIPE THIRTY (30) DAYS AFTER CONSTRUCTION. ANY BARREL DEFLECTION OF THE PIPE (REDUCTION OF THE BARREL BASE INSIDE DIAMETER) GREATER THAN 5% WILL REQUIRE THE REINSTALLATION OR REPLACEMENT OF THE PIPE BY THE CONTRACTOR. AT NO ADDITIONAL COST TO THE PROJECT, REPAIRS WILL BE MADE PER THE MANUFACTURER'S RECOMMENDATION AND AS APPROVED BY THE CONSTRUCTION ENGINEER. THE COST OF ALL TESTING SHALL BE CONSIDERED SUBSIDIARY TO THE HOPE PIPE BID ITEM, AND WILL NOT BE BID OR PAID FOR SEPARATELY.

MANDREL TESTING SHALL BE COMPLETED PER CITY OF WICHITA STANDARD SPECIFICATIONS. TELEVIEWING OF HOPE PIPE SHALL BE PER THE FOLLOWING:

HOPE STORM SEWER PIPE - TELEVIEWING SPECIFICATIONS
ALL HOPE STORM SEWER PIPE BEING TELEVIEWED BY PRIVATE COMPANIES SHALL CONFORM TO THE FOLLOWING SET OF STANDARDS:
VIDEOS MAY BE SUBMITTED BY COMPACT DISC (CD) OR DVD. CDS AND DVDS SHALL BE OF HIGH QUALITY AND CLARITY.
VIDEOS AND WRITTEN LOGS SHALL BE CLEARLY LABELED WITH PROJECT NAME, PROJECT NUMBER AND CLEAR REFERENCE TO THE LOCATION OF STORM SEWER WORK.
THE CAMERA OPERATOR SHALL PROVIDE AN AUDIO DESCRIPTION TO CLEARLY IDENTIFY THE SEGMENT BEING TELEVIEWED. THEY SHALL LOCATE THE LINE BEING TELEVIEWED FROM THE CLOSEST NORTH-SOUTH STREET AND EAST-WEST STREET. BEGINNING AND ENDING STRUCTURES SHALL BE CALLED OUT USING THE STATIONING AND LINE NUMBER REFERENCES AS SHOWN ON THE CONSTRUCTION PLANS.
TELEVIEWING WILL BEGIN AT THE CENTER OF THE UPSTREAM MANHOLE AND WILL RUN CONTINUOUSLY TO THE CENTER OF THE DOWNSTREAM MANHOLE. THE CENTER OF THE UPSTREAM MANHOLE SHALL BE SET AT 0+00 AND THE CENTER OF THE DOWNSTREAM MANHOLE SHALL BE SET AT 1+00.

VIDEO SHALL SHOW THE COMPLETE FOOTAGE OF EACH LINE. ANY BREAKS OR INCONTINUITIES IN THE VIDEO RECORDING WILL RESULT IN THE VIDEO BEING REJECTED AND A NEW AND COMPLETE VIDEO WILL NEED TO BE SUBMITTED.

APPROXIMATELY ONE INCH SIMULATED FLOW SHALL BE ADDED TO SHOW FLOW GRADE. CAMERA SHALL BE PULLED IN THE SAME DIRECTION AS THE FLOW, UNLESS APPROVED IN WRITING BY THE CITY ENGINEER'S OFFICE.

CAMERA TRAVEL MUST BE SLOW ENOUGH THAT THE REVIEWER CAN EASILY HAVE THREE SECONDS TO VIEW THE ENTIRE CIRCUMFERENCE OF THE PIPE BEFORE THE CAMERA PASSES BY ANY LOCATION.

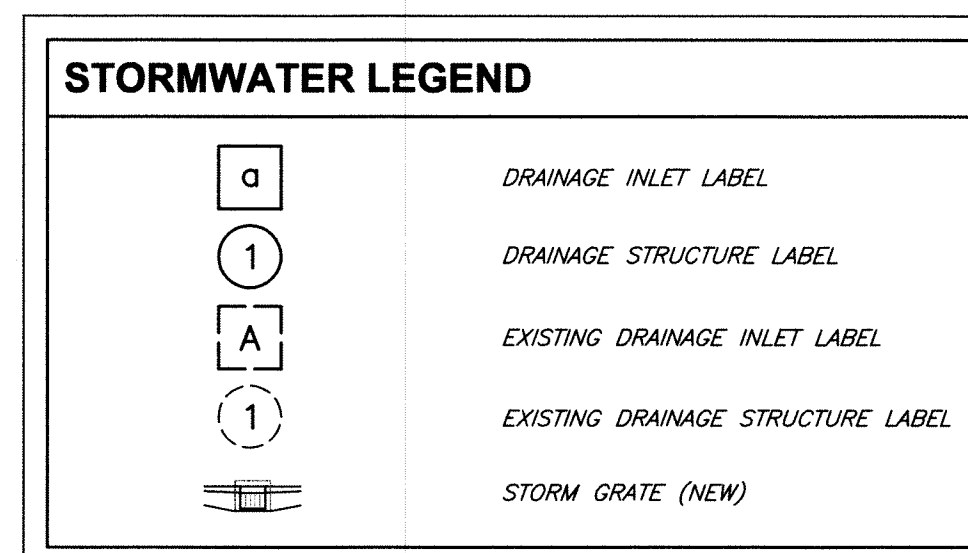
CONTRACTOR SHALL IDENTIFY ON THE VIDEO AND ON THE WRITTEN LOG EACH FEATURE OBSERVED. ANY SPECIALS FEATURES SHALL BE IDENTIFIED BY STATION, LEFT OR RIGHT. THE OPERATOR SHALL PAUSE THE CAMERA AT EACH FEATURE SUCH THAT IT WILL BE CLEARLY VISIBLE ON THE SCREEN FOR REVIEW, AND HIGHLIGHT THE CAMERA HEAD TO OBTAIN A CLEAR VIEW OF THE ENTIRE OUTSIDE PERIMETER OF THE PIPE.

FOR ANY POTENTIAL DEFECT, SUCH AS A GAPPED JOINT, THE CAMERA SHALL STOP, PAN/TILT/ROTATE AND OBSERVE THE ENTIRE DEFECT. THIS MEANS LEFT, RIGHT AND TOP SHALL BE CLEARLY VISIBLE FOR REVIEW.

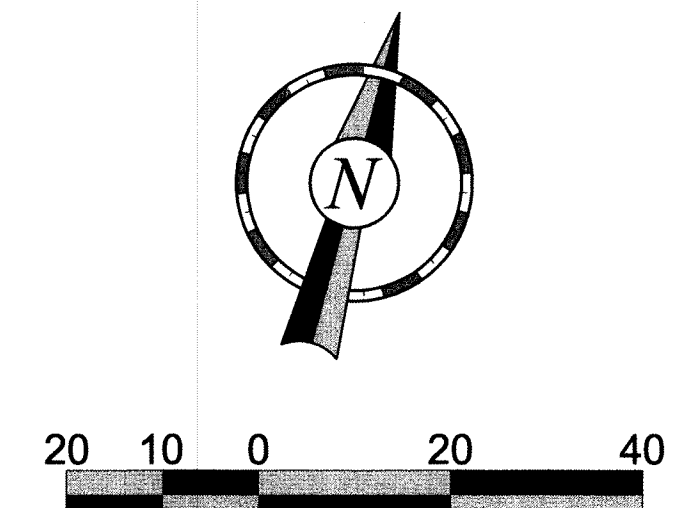
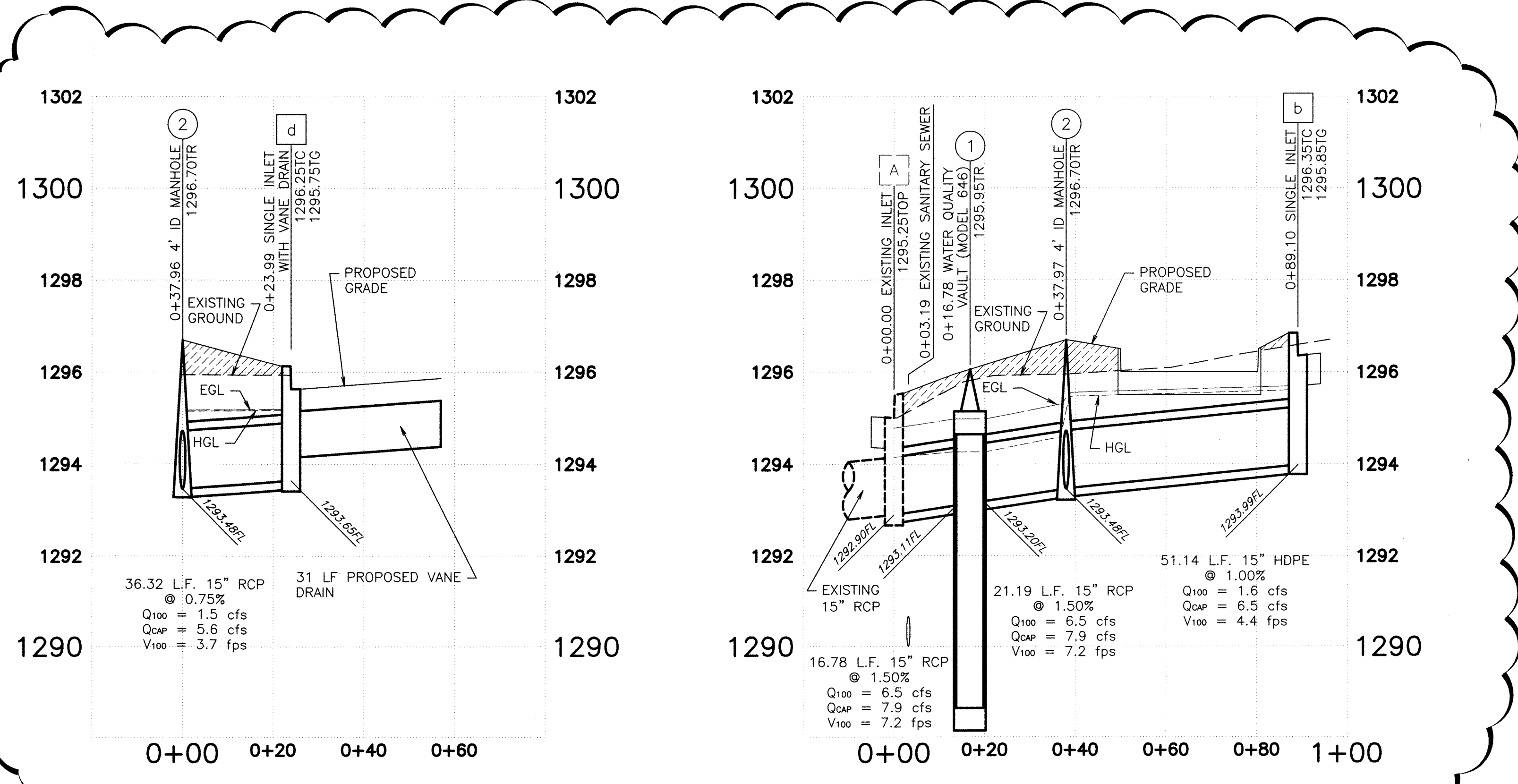
THE CAMERA OPERATOR WILL PROVIDE AN AUDIO DESCRIPTION OF EVERY FEATURE VIEWED.

IF A CLEANER HEAD IS PULLED AHEAD OF THE CAMERA, IT SHALL NOT BE USED UNLESS IT IS NECESSARY TO LOWER THE FLOW LEVEL, TO VIEW TAPS, RISERS AND OTHER FEATURES. WHEN A CLEANER HEAD IS USED IN FRONT OF THE CAMERA IT SHALL BE POSITIONED NO CLOSER THAN THREE FEET TO THE CAMERA. IF NECESSARY TO PRESSURIZE THE CLEANER NOZZLE TO VIEW A DEFECT OR CONNECTION WHILE THE CAMERA IS STATIONARY, THE SIMULATED FLOW LEVEL MUST BE RE-ESTABLISHED PRIOR TO THE TELEVIEWING CONTINUING AFTER THE PRESSURE IS REMOVED FROM NOZZLE. IF THE NOZZLE MUST BE PRESSURIZED FOR A LENGTH OF PIPE WHERE THE CAMERA IS NOT STATIONARY, AFTER THE NOZZLE PRESSURE IS OFF, THE CAMERA MUST BE RETURNED TO THE STARTING POINT WHERE THE CLEANER WAS PRESSURIZED AND TRAVEL THROUGH THE SAME AREA WITH SIMULATED FLOW.

THE PROJECT CONSTRUCTION ENGINEER SHALL BE NOTIFIED IN ADVANCE WHEN THE TELEVIEWING IS TO TAKE PLACE. (SPECIFICATION REQUIRES TELEVIEWING TO BE COMPLETED A MINIMUM OF THIRTY DAYS AFTER COMPLETION OF THE PROJECT) AND THE VIDEO AND WRITTEN LOGS SHALL BE SUBMITTED TO THE CONSTRUCTION ENGINEER'S OFFICE WITHIN ONE WEEK OF COMPLETION.



DENOTES AREAS TO BE TYPE 'A' AGGREGATE COMPACTED TO 95% STANDARD PROCTOR DENSITY.



2

4705 South 129th East Ave.
Tulsa, OK 74134-7008
P.O. Box 3475
Tulsa, OK 74101-3475
(918) 615-7700

GENERAL NOTES

CORRUGATED HIGH DENSITY POLYETHYLENE PIPE
CITY OF WICHITA STANDARD SPECIFICATIONS, SECTION 804.2, ADD THE FOLLOWING:

STORM WATER PIPE
CORRUGATED HIGH DENSITY POLYETHYLENE PIPE -

MATERIAL
CORRUGATED HIGH DENSITY POLYETHYLENE (HDPE) PIPE FOR STORM WATER SHALL CONFORM TO ASTM F2368 AND AASHTO M204, OR THE LATEST REVISIONS THEREOF, AND SHALL BE TYPE S OR TYPE SP (PERFORATED - ONLY WHEN SPECIFIED) ONLY. ALL HOPE PIPE JOINTS SHALL CONSIST OF INTEGRAL BELL AND SPOUT WITH RUBBER GASKET THAT MEETS SPECIFICATION REQUIREMENTS OF ASTM F477. BELL SHALL SHAW OVER THREE (3) SPOUT CORRUGATIONS. ALL JOINTS SHALL BE SOLE TIGHT, PER ASTM F2368, PARAGRAPHS 6.5.3.1, AND AASHTO M204.

SIZE
HOPE PIPE SHALL HAVE AN I.D. EQUIVALENT TO THE PIPE SIZE SPECIFIED BY THE PROJECT PLANS. THE MAXIMUM ALLOWABLE INSIDE DIAMETER FOR HOPE PIPE SHALL BE THIRTY (30").

CONNECTIONS AND FITTINGS
FITTINGS/CONNECTIONS WILL ONLY BE ALLOWED IN REPAIR SITUATIONS, AND AS APPROVED BY THE CITY CONSTRUCTION ENGINEER. NO FITTINGS WILL BE ALLOWED BETWEEN DISSIMILAR MATERIALS. CONNECTION TO AN EXISTING PIPE, REGARDLESS OF THE EXISTING PIPE MATERIAL, SHALL BE BY MEANS OF A STRUCTURE. TO BE DESIGNED INTO THE PROJECT. ALL FITTINGS TO BE USED FOR HOPE TO HOPE CONNECTIONS SHALL NOT REDUCE OR IMPAIR THE OVERALL INTEGRITY OR FUNCTION OF THE PIPELINE AND SHALL MEET THE REQUIREMENTS OF AASHTO M204 AND ASTM F2368. FITTINGS MAY BE EITHER MOULDED OR FABRICATED AND SHALL BE SOLE TIGHT. COMMON CORRUGATED FITTINGS INCLUDE IN-LINE JOINT FITTINGS SUCH AS COUPLERS AND REDUCERS, AND BRANCH ASSEMBLY FITTINGS SUCH AS BENDS, TEES, WYES AND END CAPS. ONLY FITTINGS SUPPLIED OR RECOMMENDED BY THE MANUFACTURER, AND AS APPROVED BY THE CONSTRUCTION ENGINEER, SHALL BE USED. THE COST OF SUCH FITTINGS, ADAPTERS, AND CONNECTIONS SHALL BE CONSIDERED SUBSIDIARY TO THE HOPE PIPE BID ITEM, AND WILL NOT BE BID OR PAID FOR SEPARATELY.

ALLOWABLE USE
HOPE PIPE PLACEMENT WITHIN THE STREET RIGHT-OF-WAY, INCLUDING UNDER PAVEMENT, SHALL ONLY BE PERMISSIBLE FOR ROADWAYS THAT CARRY LESS THAN 3,000 VEHICLES PER DAY.

THE LAST RUN OF PIPE TO AN END SECTION, HEADWALL, DITCH OR OTHER SUCH FACILITY MUST BE CONCRETE. HOPE PIPE SHALL ALWAYS TERMINATE AT A MANHOLE OR OTHER TYPE STRUCTURE, AND NO DROPPED PIPE WILL BE PERMITTED. THE USE OF HOPE PIPE AS A ROAD OR DRIVEWAY CURB WILL ONLY BE ALLOWED AS APPROVED BY THE CITY ENGINEER'S OFFICE.

© COPYRIGHT
1986 QUIKTRIP CORPORATION
DESIGN PATENTS

QUIKTRIP PLANS ARE THE EXCLUSIVE PROPERTY OF QUIKTRIP CORPORATION, TULSA, OKLAHOMA. THESE PLANS ARE PROTECTED IN THEIR ENTIRETY BY DOMESTIC AND INTERNATIONAL COPYRIGHT AND PATENT STATUTES. ANY UNAUTHORIZED USE, REPRODUCTION, PUBLICATION, DISTRIBUTION OR SALE IN WHOLE OR IN PART, IS STRICTLY FORBIDDEN.

No.	Revision	Date
1	CITY OF WICHITA REVIEW COMMENTS 10/9/2009	10/14/09
2	CITY OF WICHITA REVIEW	4/14/10

HRAOK, INC.
ENGINEERS-SURVEYORS-PLANNERS-LANDSCAPE ARCHITECTS
OKLAHOMA: CA# 3643-EXP. DATE: 6-30-2011
KANSAS: CN# 1600-EXP. DATE: 12-31-2010

1913 WEST TACOMA - SUITE A VOICE: (918) 268-3737
BROKEN ARROW, OKLAHOMA 74012 FAX: (918) 268-2554
WWW.HRAOK.COM INFO@HRAOK.COM

DATE: 4/21/2010

ONE CALL

STORM SEWER PLAN AND PROFILE

DRAWN BY: TSM/BLJ	SHEET
DESIGNED BY: BLJ	5
CHECKED BY: BSR	
ISSUE DATE: 8/3/09	OF 14

WICHITA, KANSAS
1010 E. DOUGLAS AVE.
QuikTrip Store No. : 386R

RS: 1-800-344-7233
WICHITA: 687-2470