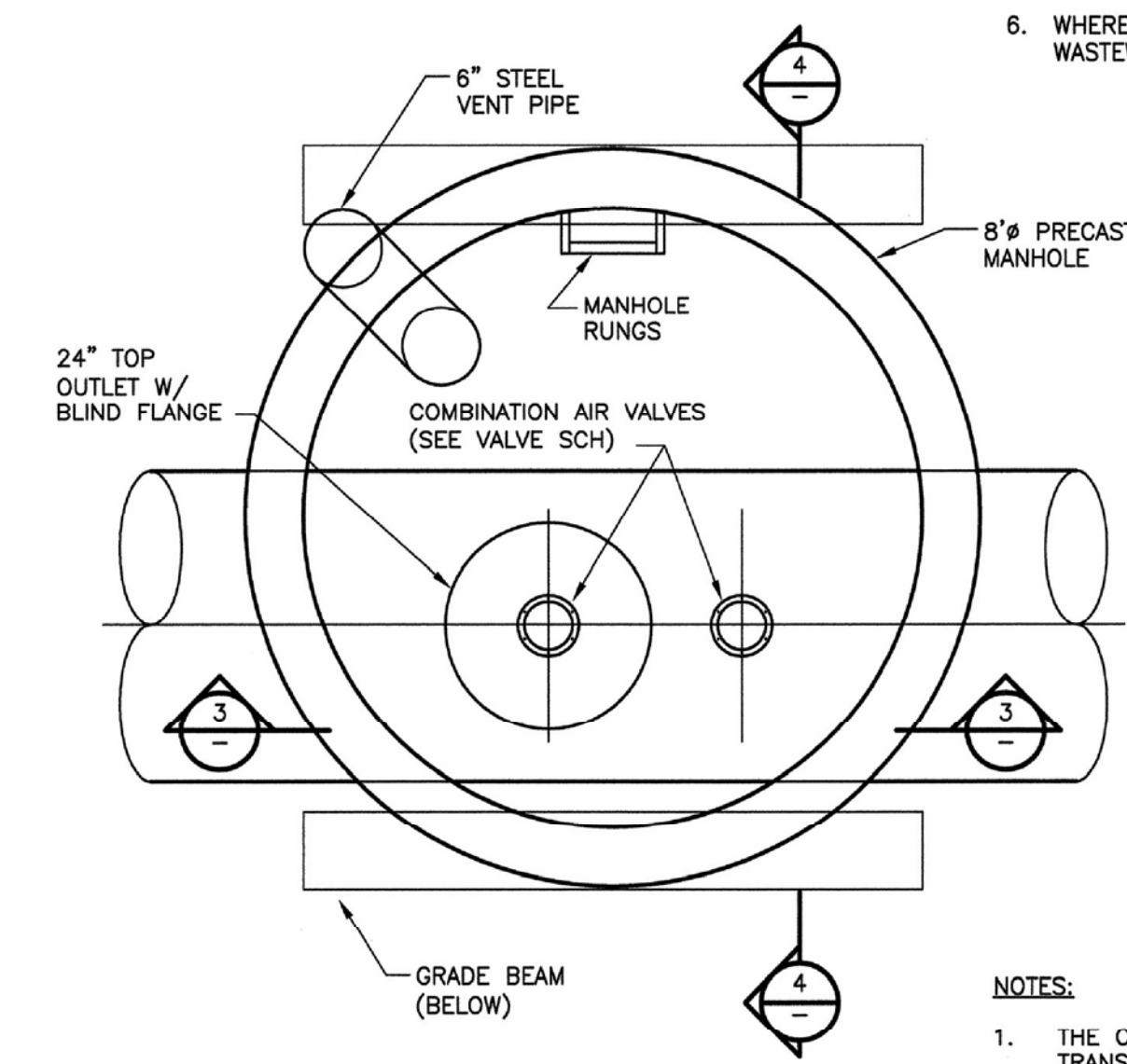


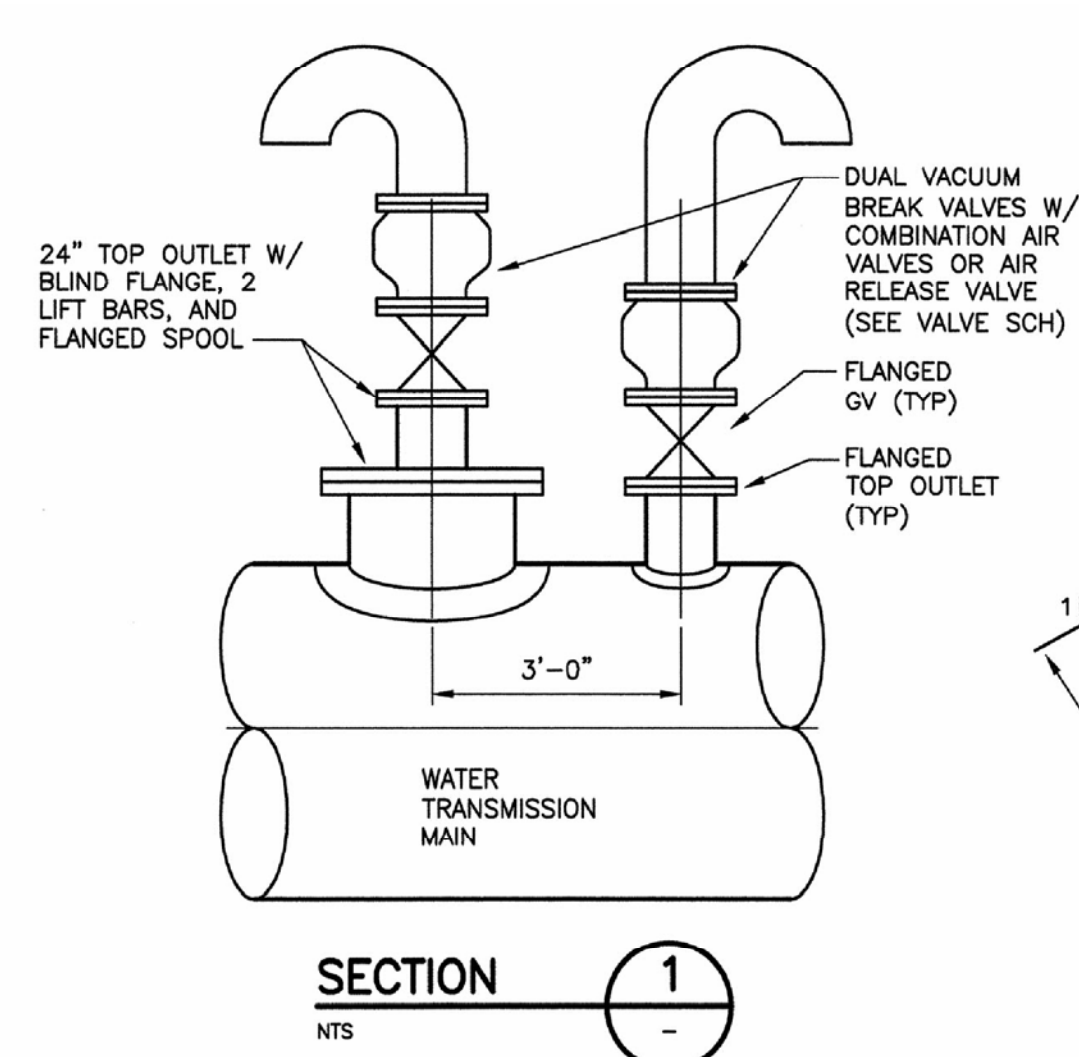
COMBINATION AIR/ VACUUM BREAK ASSEMBLY

DETAIL A



COMBINATION AIR VALVE ASSEMBLY

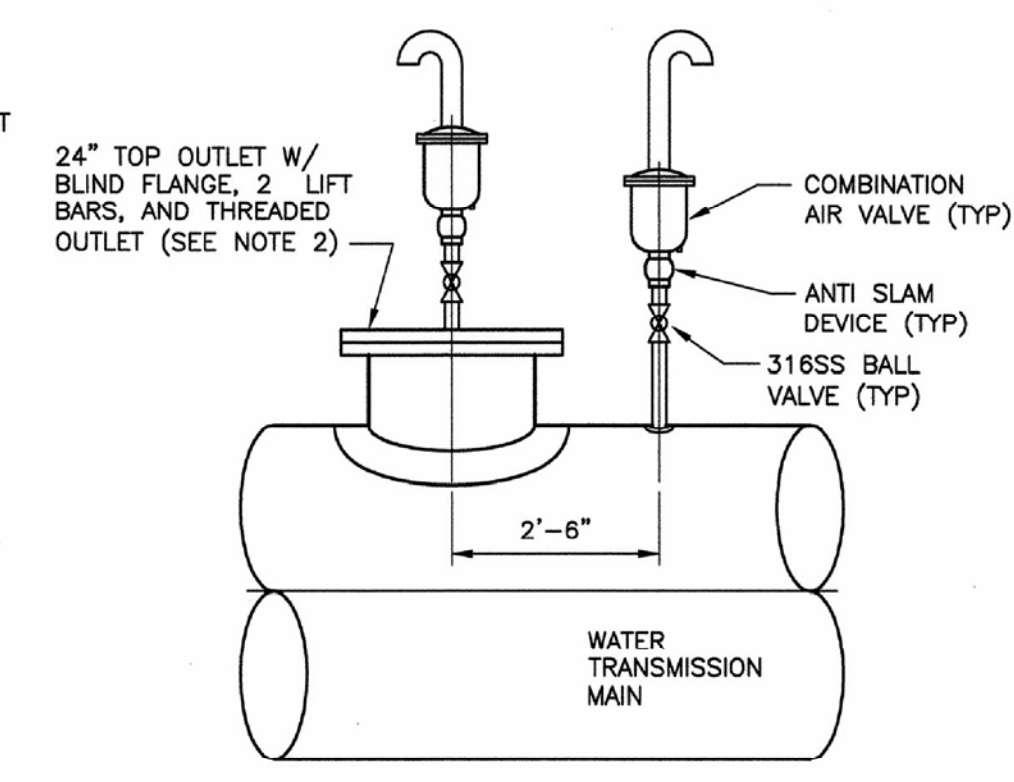
DETAIL B



SECTION 1

NOTES:

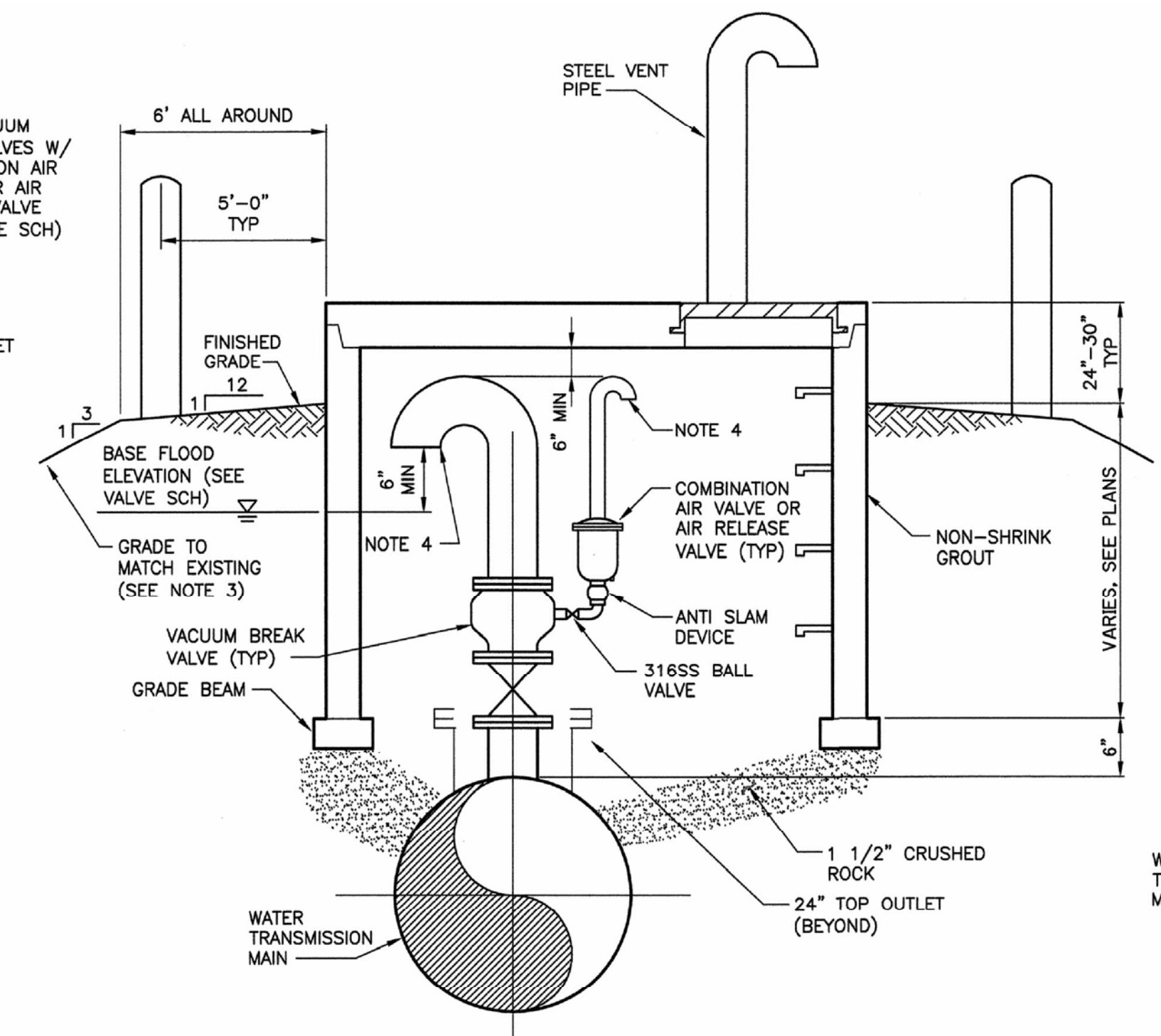
1. THE COMBINATION AIR/ VACUUM BREAK ASSEMBLY SHALL BE INSTALLED ON ALL WATER TRANSMISSION PIPELINES WHERE A VACUUM BREAK VALVE IS REQUIRED (SEE VALVE SCHEDULE).
2. THE STEEL VENT SIZE SHALL MATCH THE VACUUM BREAK VALVE SIZE.
3. FOR VAULTS LOCATED IN THE FLOODPLAIN, ADD SUFFICIENT COMPACTED FILL AROUND THE VALVE VAULT TO MAINTAIN 6-INCHES MINIMUM CLEARANCE BETWEEN BASE FLOOD ELEVATION AND BOTTOM OF GOOSENECK VENT. GRADE THE FILL AWAY FROM VAULT AT 3:1 SIDESLOPE TO MATCH EXISTING GRADE. SEE VALVE SCHEDULE.
4. WHERE NOTED ON THE VALVE SCHEDULE, INSTALL FLOOD PROTECTION FLOAT CHECK VALVE TO PREVENT WATER INFLOW IN-LIEU OF ELEVATING THE VENT ABOVE THE BASE FLOOD ELEVATION.
5. THE VAULT REMOTE FROM PIPE CONFIGURATION WITH LATERAL VENT PIPING SHALL BE USED AT LOCATIONS AS SHOWN ON THE DRAWINGS.
6. WHERE NOTED ON VALVE SCHEDULE, AIR RELEASE VALVES SHALL BE FOR WASTEWATER SERVICE.



SECTION 3

NOTES:

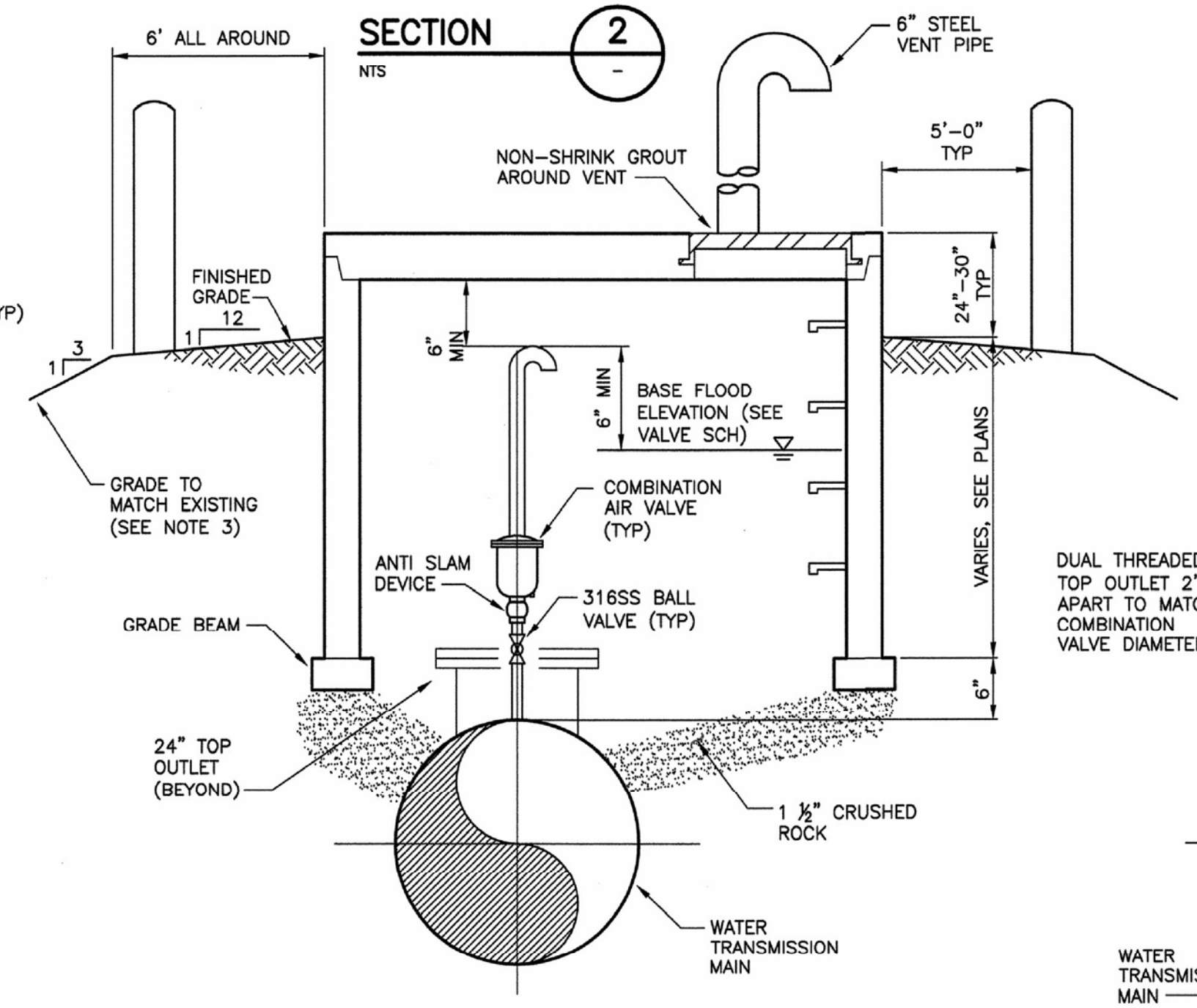
1. THE COMBINATION AIR VALVE ASSEMBLY SHALL BE INSTALLED ON ALL TRANSMISSION PIPELINES WHERE A VACUUM BREAK VALVE IS NOT REQUIRED (SEE VALVE SCHEDULE).
2. FOR TRANSMISSION MAIN SIZES LESS THAN 30-INCHES, A THREADED OUTLET SHALL BE FURNISHED IN LIEU OF THE 24-INCH TOP OUTLET, EXCEPT FOR LINE B-4 AND UNLESS OTHERWISE NOTED ON THE DRAWINGS.
3. FOR VAULTS LOCATED IN THE FLOODPLAIN, ADD SUFFICIENT COMPACTED FILL AROUND THE VALVE VAULT TO MAINTAIN 6-INCHES MINIMUM CLEARANCE BETWEEN BASE FLOOD ELEVATION AND BOTTOM OF GOOSENECK VENT. GRADE THE FILL AWAY FROM VAULT AT 3:1 SIDESLOPE TO MATCH EXISTING GRADE. SEE VALVE SCHEDULE.



VAULT CENTERED OVER PIPE

SECTION 2

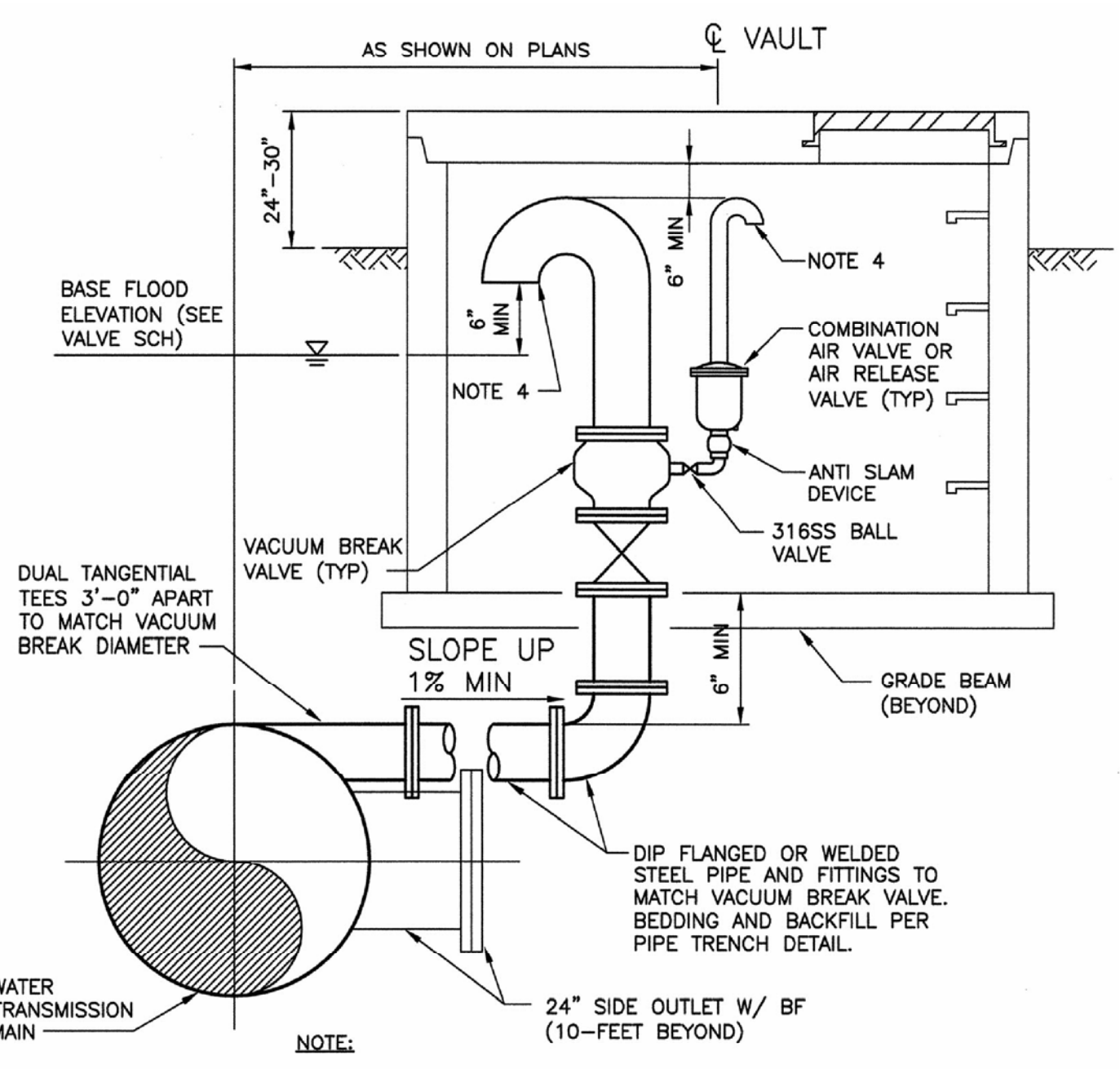
NOTES:



VAULT CENTERED OVER PIPE

SECTION 4

STANDARD DETAILS SHOWN ON THIS SHEET SHALL BE USED AT ALL APPLICABLE LOCATIONS, UNLESS OTHERWISE NOTED. ALL STANDARD DETAILS SHOWN MAY NOT BE REQUIRED FOR THIS PROJECT.

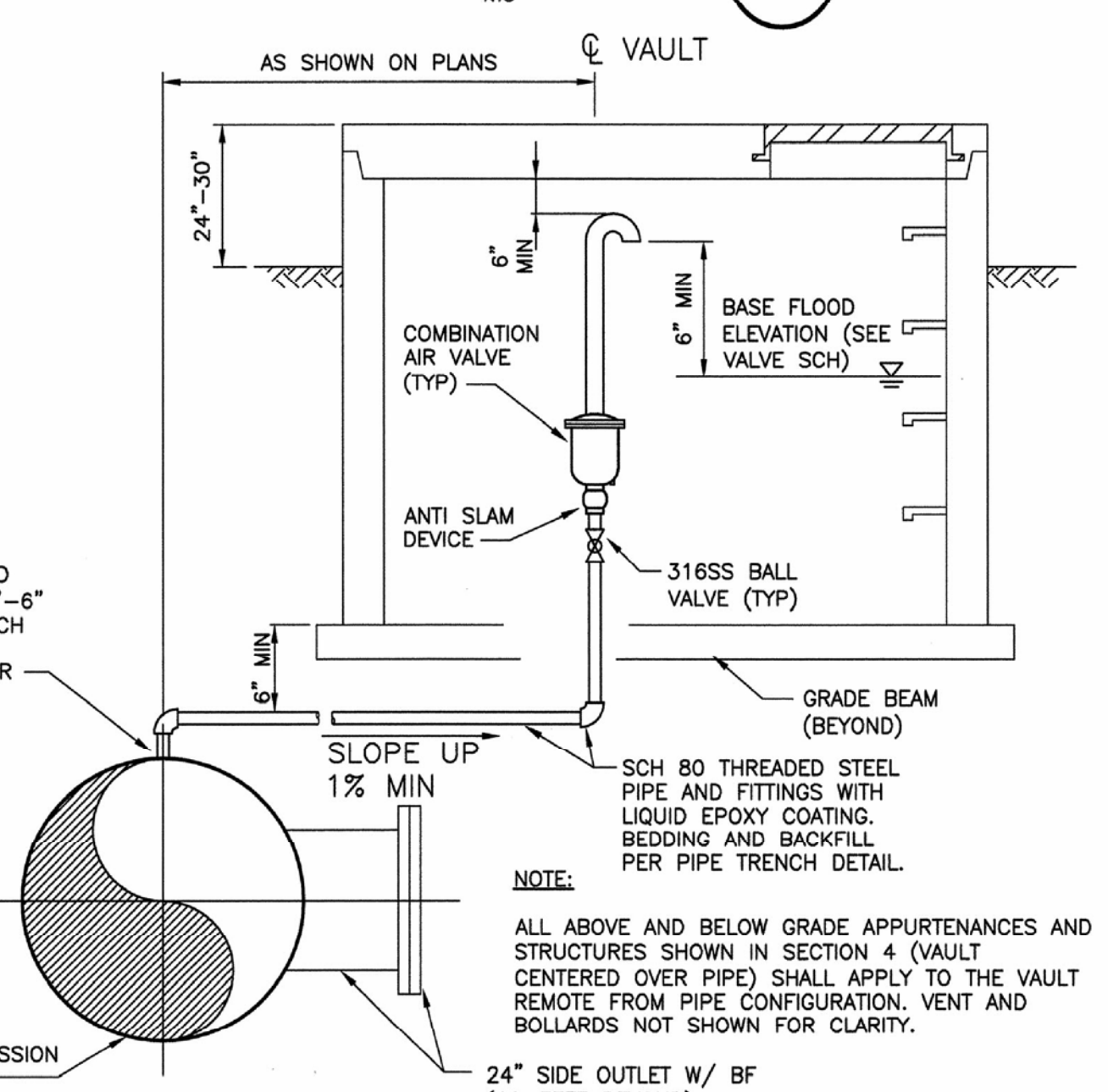


VAULT REMOTE FROM PIPE

SECTION 2A

NOTE:

ALL ABOVE AND BELOW GRADE APPURTENANCES AND STRUCTURES SHOWN IN SECTION 2 (VAULT CENTERED OVER PIPE) SHALL APPLY TO THE VAULT REMOTE FROM PIPE CONFIGURATION. VENT AND BOLLARDS NOT SHOWN FOR CLARITY.



VAULT REMOTE FROM PIPE

SECTION 4A

NOTE:

ALL ABOVE AND BELOW GRADE APPURTENANCES AND STRUCTURES SHOWN IN SECTION 4 (VAULT CENTERED OVER PIPE) SHALL APPLY TO THE VAULT REMOTE FROM PIPE CONFIGURATION. VENT AND BOLLARDS NOT SHOWN FOR CLARITY.



**BENTLEY TIE IN
STANDARD DETAILS
WICHITA, KANSAS**

	Ruggles & Bohm, P.A. Engineering, Surveying, Land Planning		DESIGN AML	SHEET 6 OF 23
	924 North Main Wichita, Kansas 67203 www.rbkansas.com		(316) 264-8008 (316) 264-4621 fax E-mail: info@rbkansas.com	
DRAWING FILE Details {06 Details}	PROJECT NUMBER W-549	DATE June 28, 2010	REVIEW UTILITY	