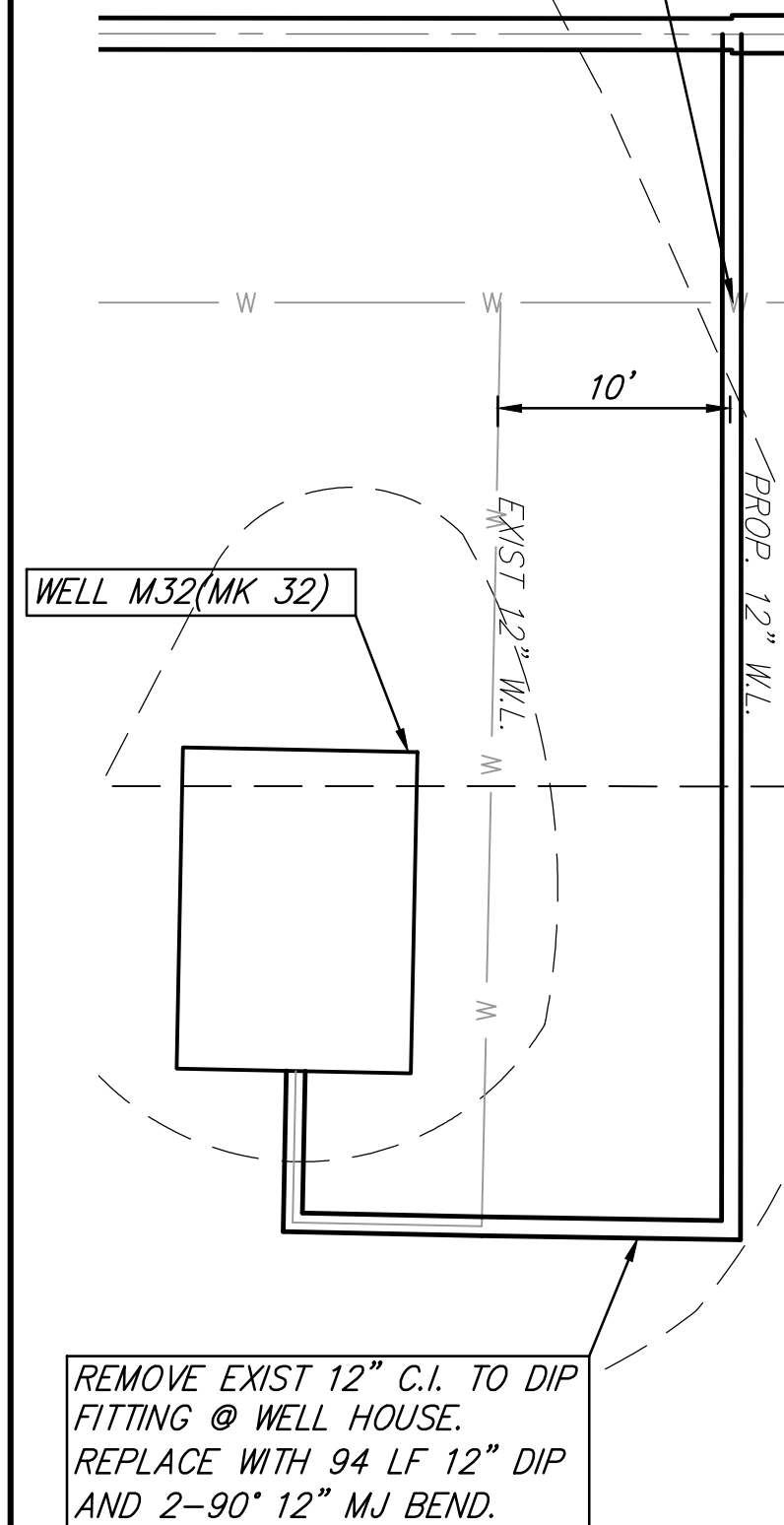
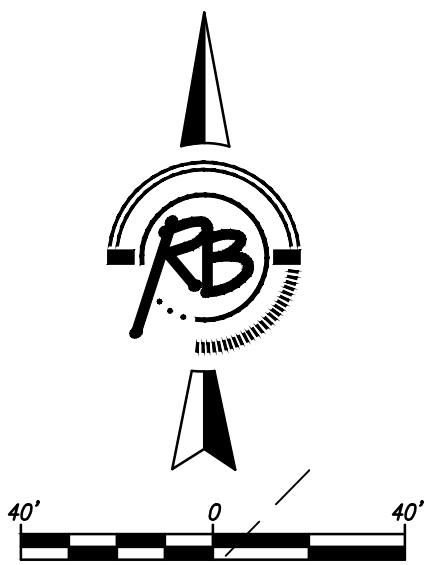
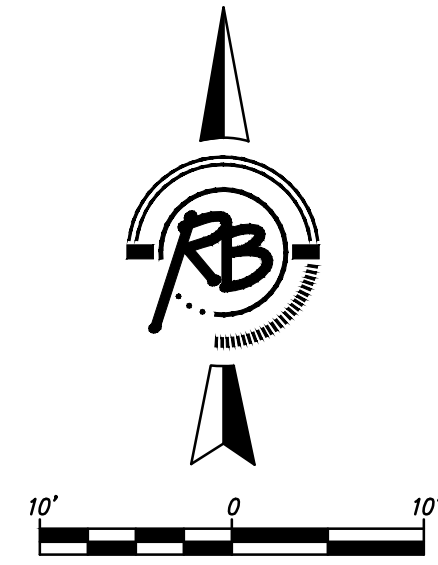
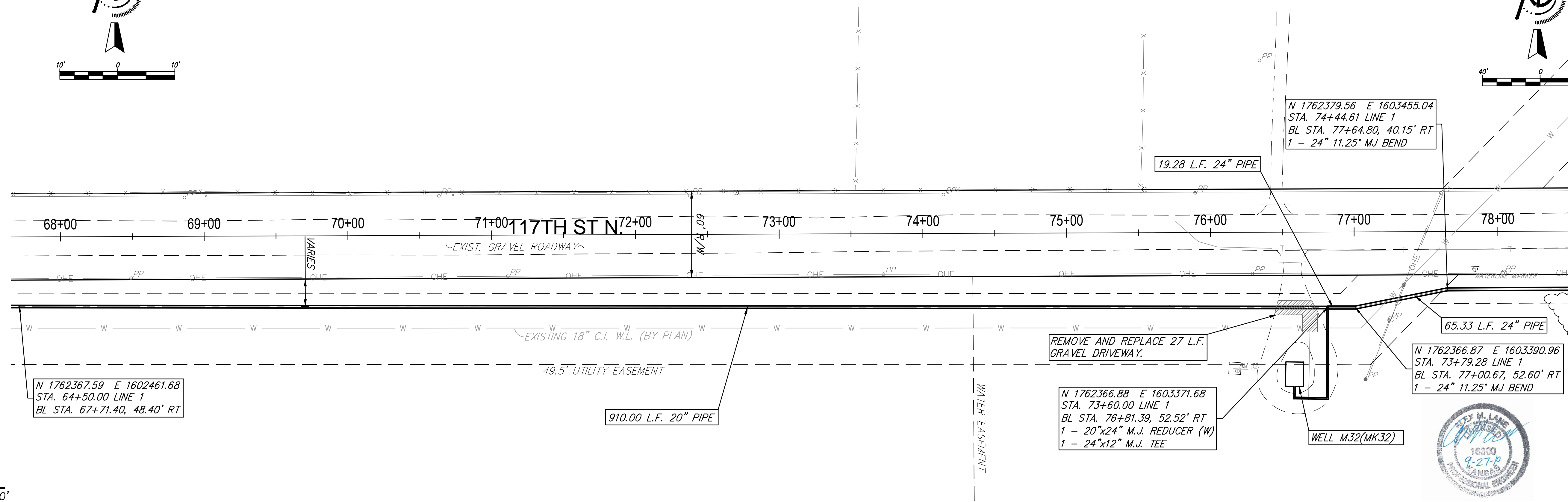


CONTRACTOR TO VERIFY LOCATION AND DEPTH OF EXISTING 12" PRIOR TO CONSTRUCTION.



REMOVE EXIST 12" C.I. TO DIP FITTING @ WELL HOUSE. REPLACE WITH 94 LF 12" DIP AND 2-90° 12" MJ BEND.

WELL M32(MK32) DETAIL
1" = 10'



N 1762367.59 E 1602461.68
STA. 64+50.00 LINE 1
BL STA. 67+71.40, 48.40' RT

910.00 L.F. 20" PIPE

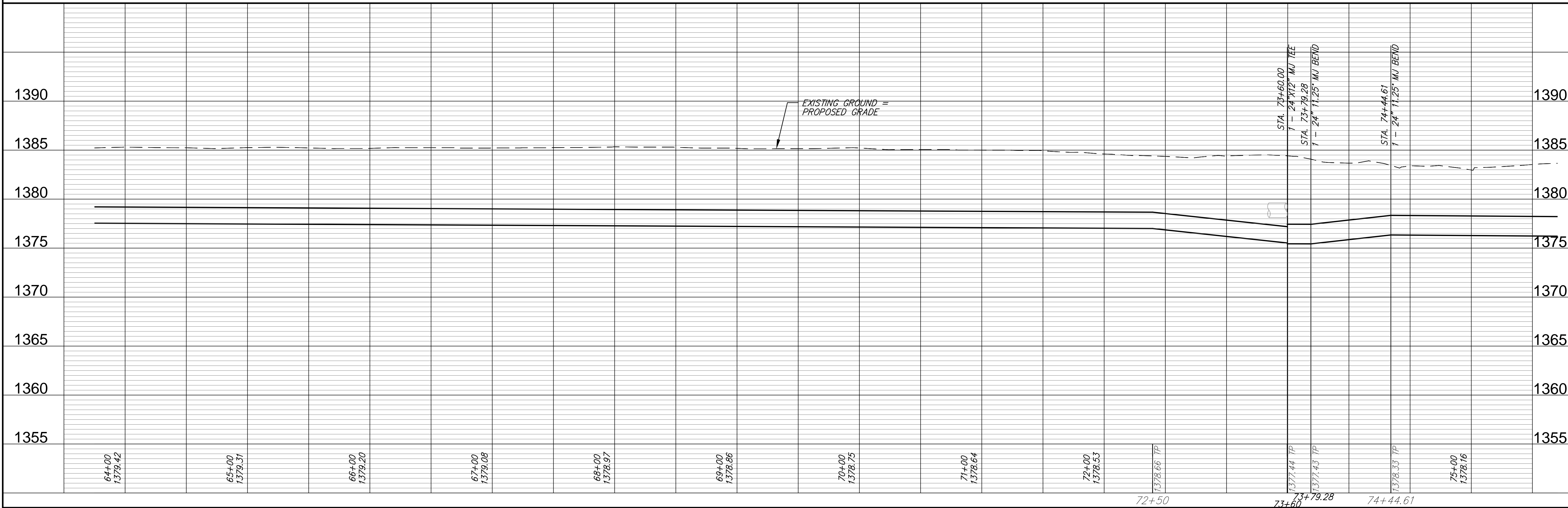
REMOVE AND REPLACE 27 L.F. GRAVEL DRIVEWAY.

N 1762366.88 E 1603371.68
STA. 73+60.00 LINE 1
BL STA. 76+81.39, 52.52' RT
1 - 20"x24" M.J. REDUCER (W)
1 - 24"x12" M.J. TEE

19.28 L.F. 24" PIPE

N 1762379.56 E 1603455.04
STA. 74+44.61 LINE 1
BL STA. 77+64.80, 40.15' RT
1 - 24" 11.25' MJ BEND

N 1762366.87 E 1603390.96
STA. 73+79.28 LINE 1
BL STA. 77+00.67, 52.60' RT
1 - 24" 11.25' MJ BEND



EXISTING GROUND = PROPOSED GRADE

STA. 73+60.00
1 - 24"x12" MJ TEE

STA. 73+79.28
1 - 24" 11.25' MJ BEND

STA. 74+44.61
1 - 24" 11.25' MJ BEND

Ruggles & Bohm, P.A.
Engineering, Surveying, Land Planning
604 North Main Street, Suite 200
Wichita, Kansas 67202
www.rugglesandbohm.com

PROJECT NUMBER: W-549 / 448-90498
DRAWING FILE: ENGINEERING BASE {14 Line 1}

DESIGN: AML
CHECK: AML
DATE: June 24, 2010

REVISION: REVIEW

BENTLEY TIE IN
LINE 1
WICHITA, KANSAS

RB JOB: 3523W
SHEET: 14
OF: 23