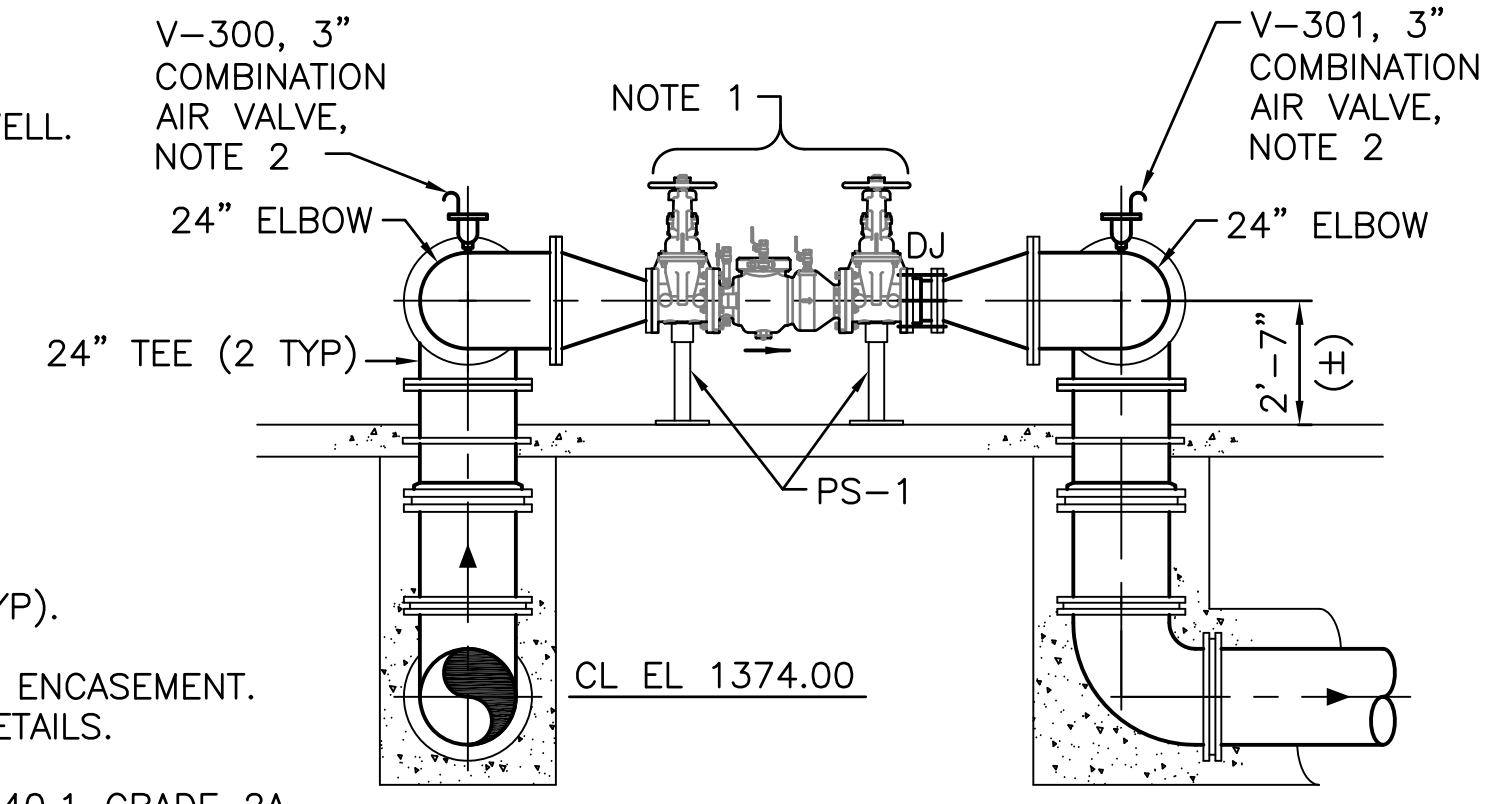


PIPING PLAN

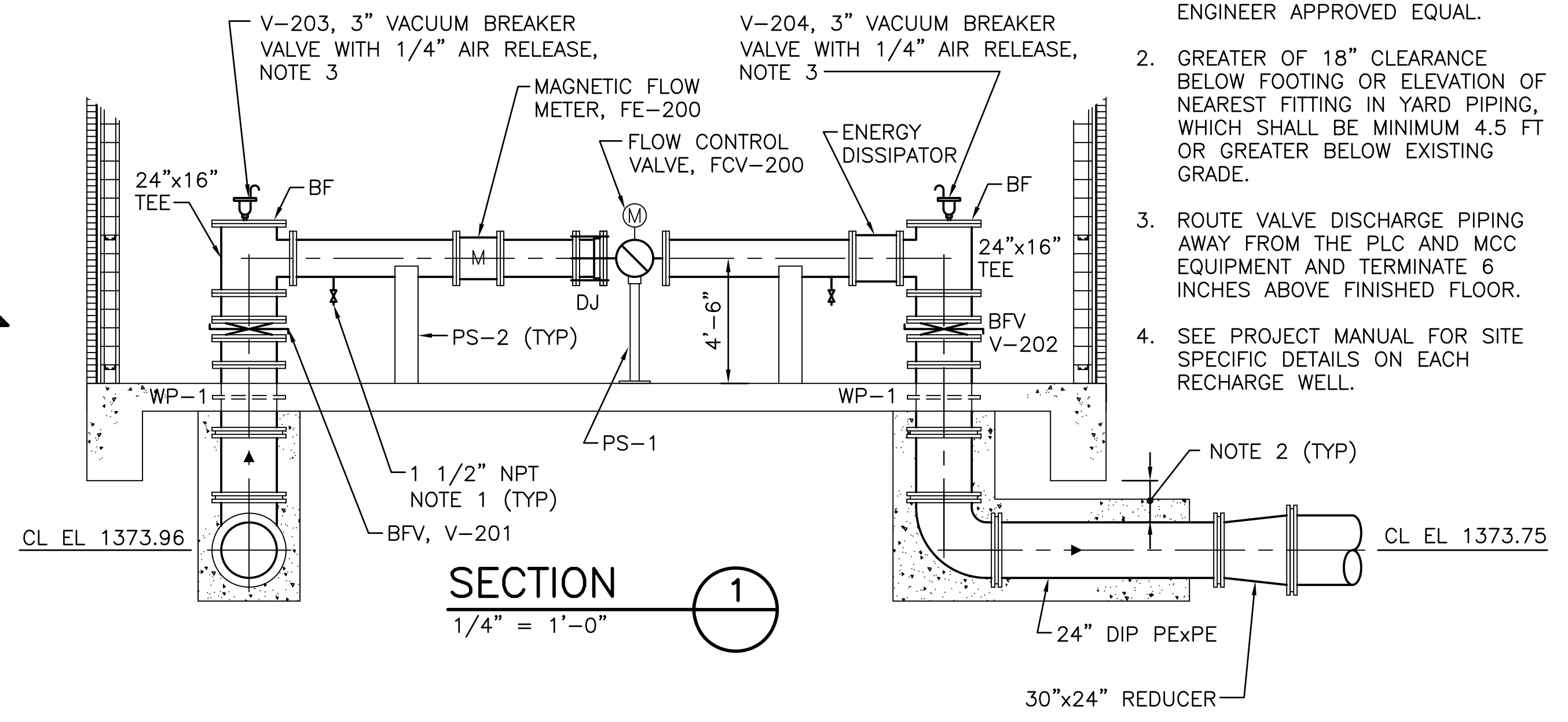


PLAN NOTES:

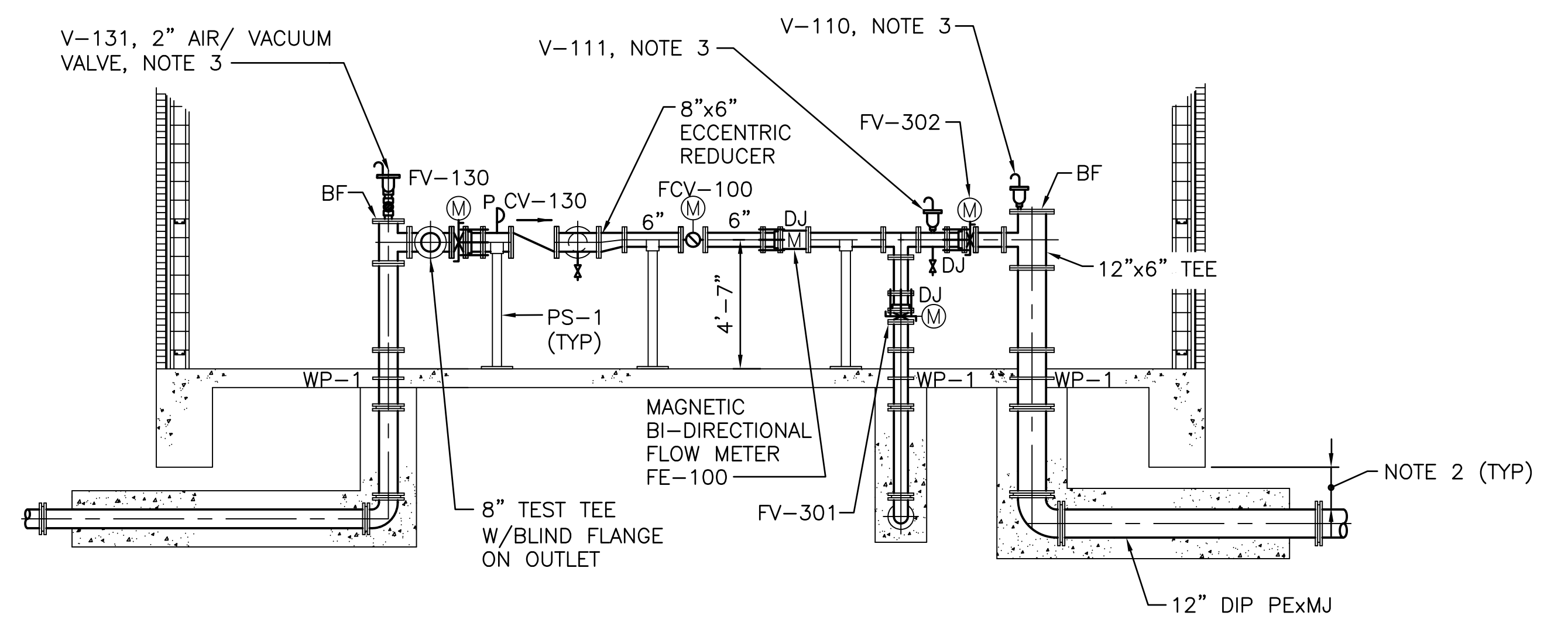
- 16" FLOW CONTROL VALVE.
- 4" SCH 80 PVC RECHARGE PIPES FOR FUTURE EXTERIOR WELL.
- 2" VACUUM BREAKER VALVE WITH 1/4" AIR RELEASE.
- STEEL PIPE SUPPORT, PS-1.
- 2" CAMLOCK, SEE DETAIL DWG PD0.01.
- PRESSURE INDICATING TRANSMITTER.
- 2" AIR/ VACUUM VALVE.
- 10" DOUBLE-CHECK BACKFLOW PREVENTER ASSEMBLY (2 TYP).
- FIRST JOINT SHALL BE ONE FOOT FROM END OF CONCRETE ENCASEMENT. SEE STRUCTURAL DRAWINGS FOR CONCRETE ENCASEMENT DETAILS.
- PROVIDE A PRESSURE GAUGE IN ACCORDANCE WITH ASME B40.1 GRADE 2A. THE DIAL SHALL BE 2 INCH DIAMETER WITH BLACK MARKINGS ON WHITE BACKGROUND. PRESSURE RANGE IS 0-100 PSI. BEFORE ACQUIRING FROM MANUFACTURER, SUBMIT DATA SHEETS TO ENGINEER INDICATING COMPLIANCE WITH THE STANDARDS STATED ABOVE. PROVIDE BLOCK AND BLEED VALVE ARRANGEMENT WITH THE PRESSURE GAUGE.



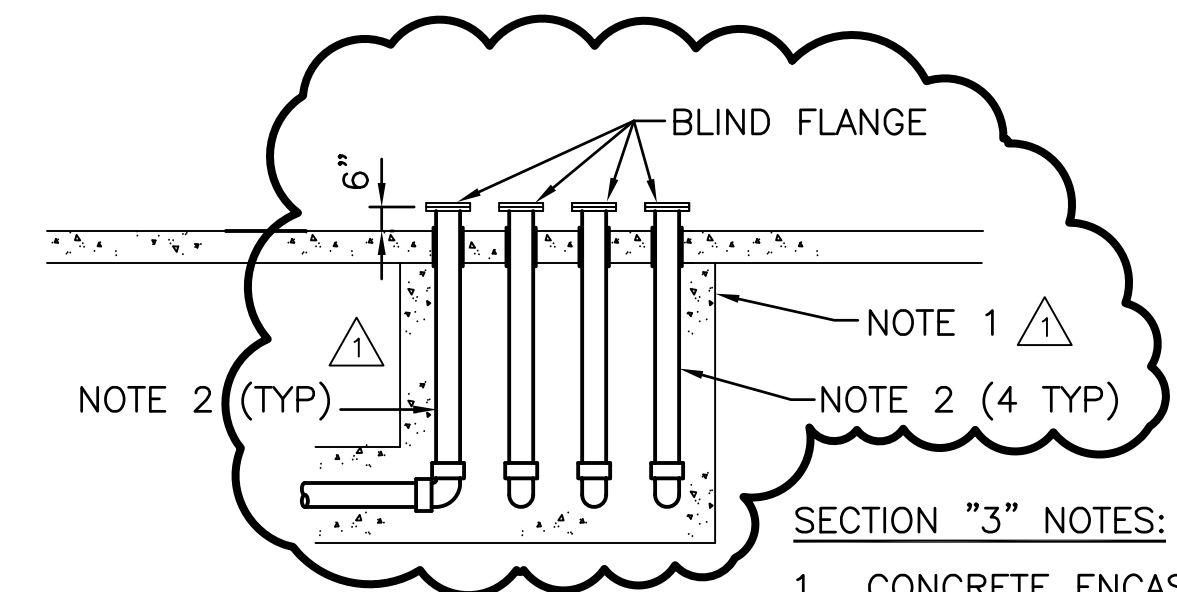
SECTION 4
1/4" = 1'-0"



SECTION 1
1/4" = 1'-0"



SECTION 2
1/4" = 1'-0"



SECTION 3
1/4" = 1'-0"

- SECTION "3" NOTES:**
- CONCRETE ENCASE PIPE UNDER BUILDING.
 - 4" SCH 80 PVC RECHARGE PIPES FOR FUTURE EXTERIOR WELL.

REFERENCE SHEET INCLUDED FOR INFORMATION ONLY

GENERAL NOTES:

- REFER TO SITE PIPING PLANS FOR PIPELINE CONTINUATION.
- INSTRUMENT TAGS ARE PREFIXED WITH THE FOLLOWING: WF-MR-034-.
- PIPE LAYOUT DRAWING SUBMITTAL SHALL INCLUDE ACTUATOR ORIENTATION FOR ALL IN-LINE VALVES GREATER THAN OR EQUAL TO 4-INCHES IN DIAMETER.

SECTION "4" NOTES:

- 10" DOUBLE-CHECK BACKFLOW PREVENTER ASSEMBLY (2 TYP), BFP-100-(01, 02).
- ROUTE VALVE DISCHARGE PIPING AWAY FROM THE PLC AND MCC EQUIPMENT AND TERMINATE 6 INCHES ABOVE FINISHED FLOOR.

Served 07-13-2010 3:53:18 PM by C-STILL CHRISTOPHER
 Plot Scale 1:1991468
 J:\WICHITA\52413_ASR\PIPING_DESIGN\CADD\PROC\788011_G-PP7-01

REV	DATE	BY	APP	DESCRIPTION
7/13/10	RJS	LJK		REVISED PER ADDENDUM NO. 2
0	01/18/10	MEB	LJK	ISSUED FOR BID



PREPARED FOR
WICHITA WATER UTILITIES

DESIGNED M. BAKER		REVIEWED M. O'CONNELL		VERIFY SCALE IF BAR IS NOT ONE INCH ON ORIGINAL DRAWING, DRAWING IS NOT TO SCALE
DRAW J. OLIPHANT		APPROV J. KLEIN		

ASR PHASE II - PACKAGE G1 - WELL SUPPORT FACILITIES		SCALE: 1/4" = 1'-0"
M34 CONTROL BUILDING PIPING PLAN AND SECTIONS		DATE: AUGUST 9, 2009
		DRAWING NO. PP7.01
CITY OF WICHITA PROJ. NO. 788011	OCA PROJECT NO. 633969	