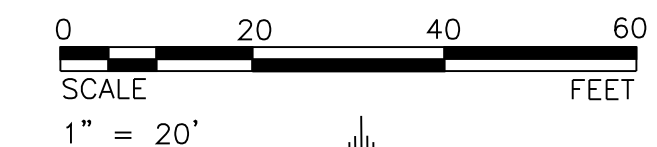


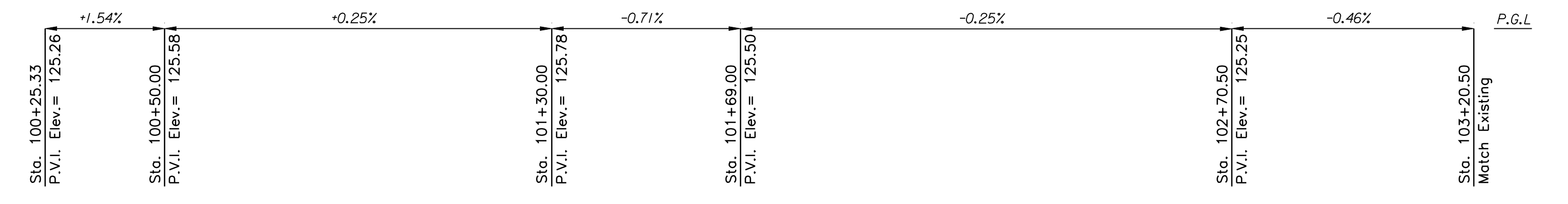
| | | | | |
|--------|-------------|------|-----------|--------------|
| STATE | PROJECT NO. | YEAR | SHEET NO. | TOTAL SHEETS |
| KANSAS | 435379 | 2010 | 3 | 19 |



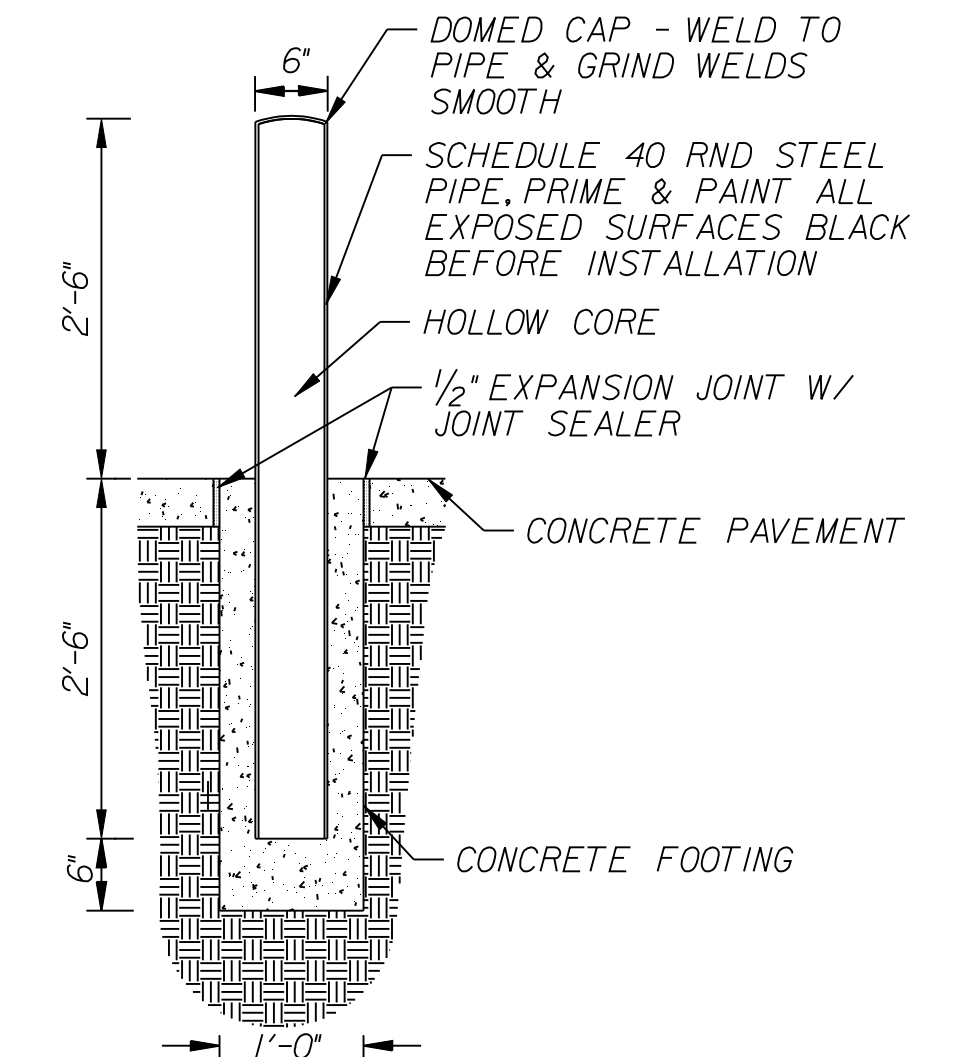
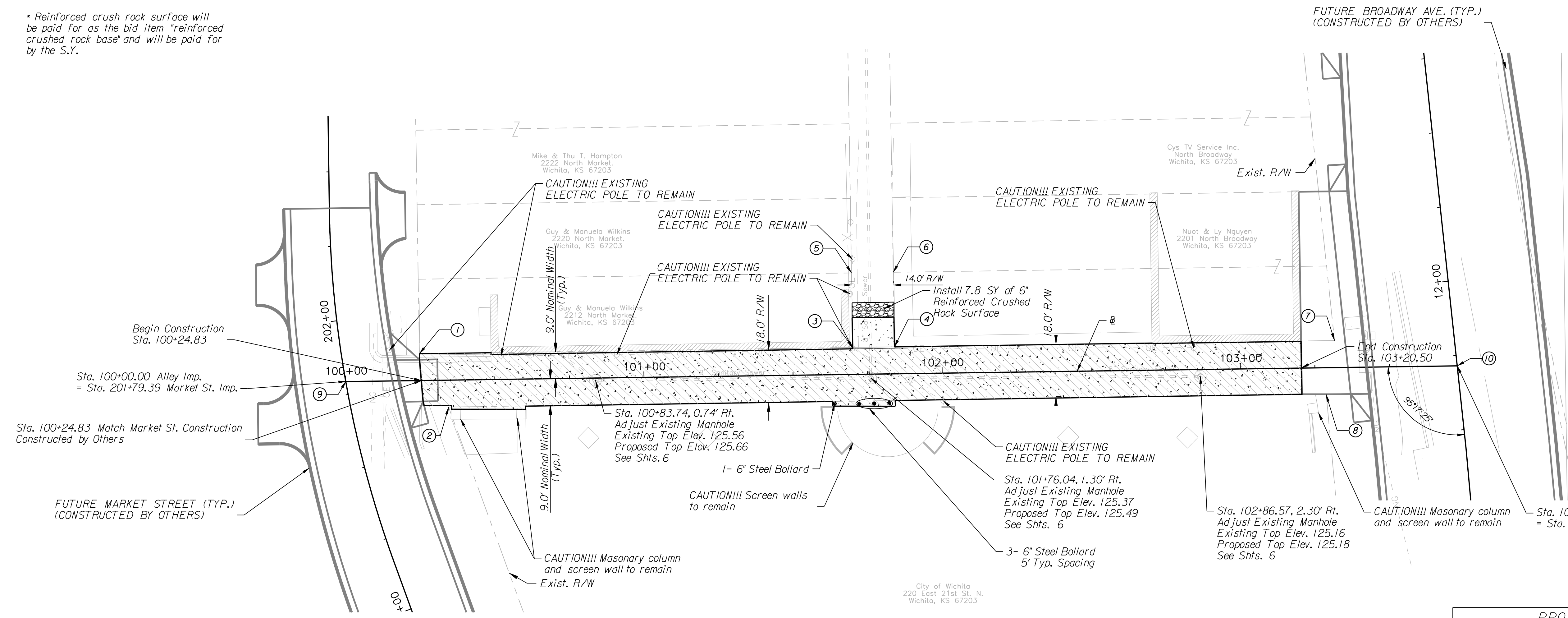
LEGEND

- Pavement Removal
- Concrete Pavement
- *Reinforced Crushed Rock Surface

* Reinforced crush rock surface will be paid for as the bid item "reinforced crushed rock base" and will be paid for by the S.Y.

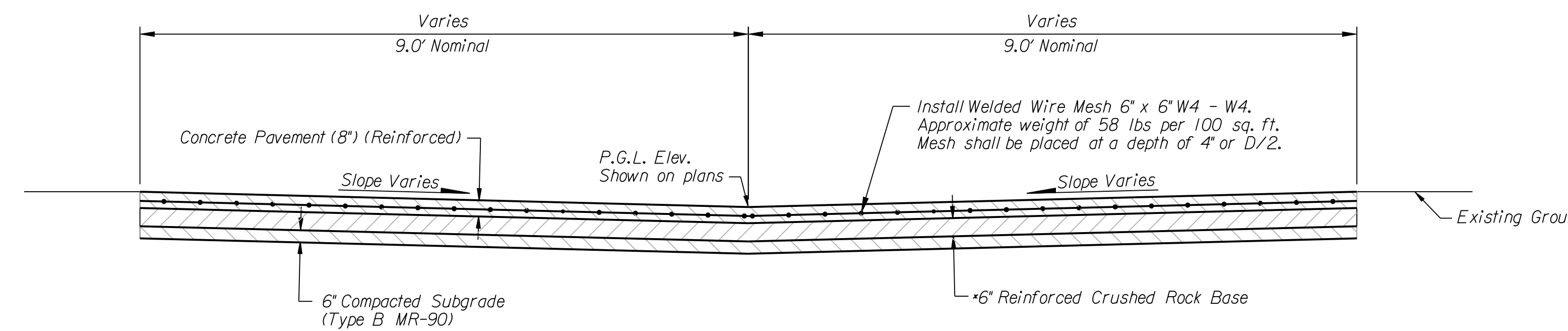


| | |
|--------------------|--|
| DATE | |
| BY | |
| REFERENCES NOTED | |
| REFERENCES CHECKED | |



6" STEEL BOLLARD
Proposed bollard locations shall be staked in the field and approved by the Engineer prior to installation.

All work associated with installation, construction, & fabrication of 6" steel bollards shall be subsidiary to the bid item "steel bollard (6)". This shall include all the time, materials, & equipment necessary for installation & fabrication whether specifically mentioned or not.



TYPICAL SECTION NOMAR ALLEY
Sta. 100+24.83 - Sta. 103+20.50

*Reinforced Crushed Rock Base shall be reinforced with Tensar BX1100 Geogrid, or Approved Equal. Geogrid is **SUBSIDIARY** to Reinforced Crushed Rock Base Bid Item.

| PROJECT CONTROL AND COORDINATE DATA | | | | | | |
|-------------------------------------|------------------|--------|------|---------------------|------------|------------|
| POINT NUMBER | BASELINE STATION | OFFSET | SIDE | DESCRIPTION | NORTHING | EASTING |
| 1 | 100+24.82 | 8.99 | Lt. | Right of Way Corner | 1699300.38 | 1648914.61 |
| 2 | 100+34.36 | 9.01 | Rt. | Right of Way Corner | 1699282.53 | 1648924.40 |
| 3 | 101+70.14 | 9.03 | Lt. | Right of Way Corner | 1699302.49 | 1649059.91 |
| 4 | 101+84.14 | 9.03 | Lt. | Right of Way Corner | 1699302.70 | 1649073.91 |
| 5 | 101+70.09 | 34.02 | Lt. | Right of Way Corner | 1699327.48 | 1649059.50 |
| 6 | 101+84.09 | 34.02 | Lt. | Right of Way Corner | 1699327.68 | 1649073.50 |
| 7 | 103+31.71 | 9.08 | Lt. | Right of Way Corner | 1699304.84 | 1649221.46 |
| 8 | 103+28.70 | 8.92 | Rt. | Right of Way Corner | 1699286.80 | 1649218.71 |
| 9 | 100+00.00 | 0.00 | # | Base Line Alignment | 1699291.09 | 1648889.91 |
| 10 | 103+72.72 | 0.00 | # | Base Line Alignment | 1699296.34 | 1649262.60 |

Note:
Existing pavement and pavement removal limits and dimensions shown are approximate. Actual limits will be determined in the field by the engineer.

BENCHMARK:
"Square Cut" on concrete base of large metal power pole, Northeast Corner of 21st and Broadway, East side of Railroad tracks.
Elev. = 125.94

SBM
"Square Cut" on top of Curb & Gutter at Family Dollar Parking Lot.
Elev. 123.66

| | |
|----------------------------|-----------|
| CITY OF WICHITA | |
| NOMAR ALLEY RECONSTRUCTION | |
| PLAN SHEET | |
| WICHITA, KANSAS | |
| DESIGNED | DRAWN |
| C.C.B. | C.C.B. |
| CHECKED | DATE |
| S.G.E. | 8/27/2010 |

\$getvar, "awgprefix"\$(getvar, "awgname"), Plotarea\$(etime, 0, MON DD", "YYYY - HMMmm/pm)
 Plotted By: ccbanka
 File: g:\w1100017\Road\0017p01.sht
 8/27/2010