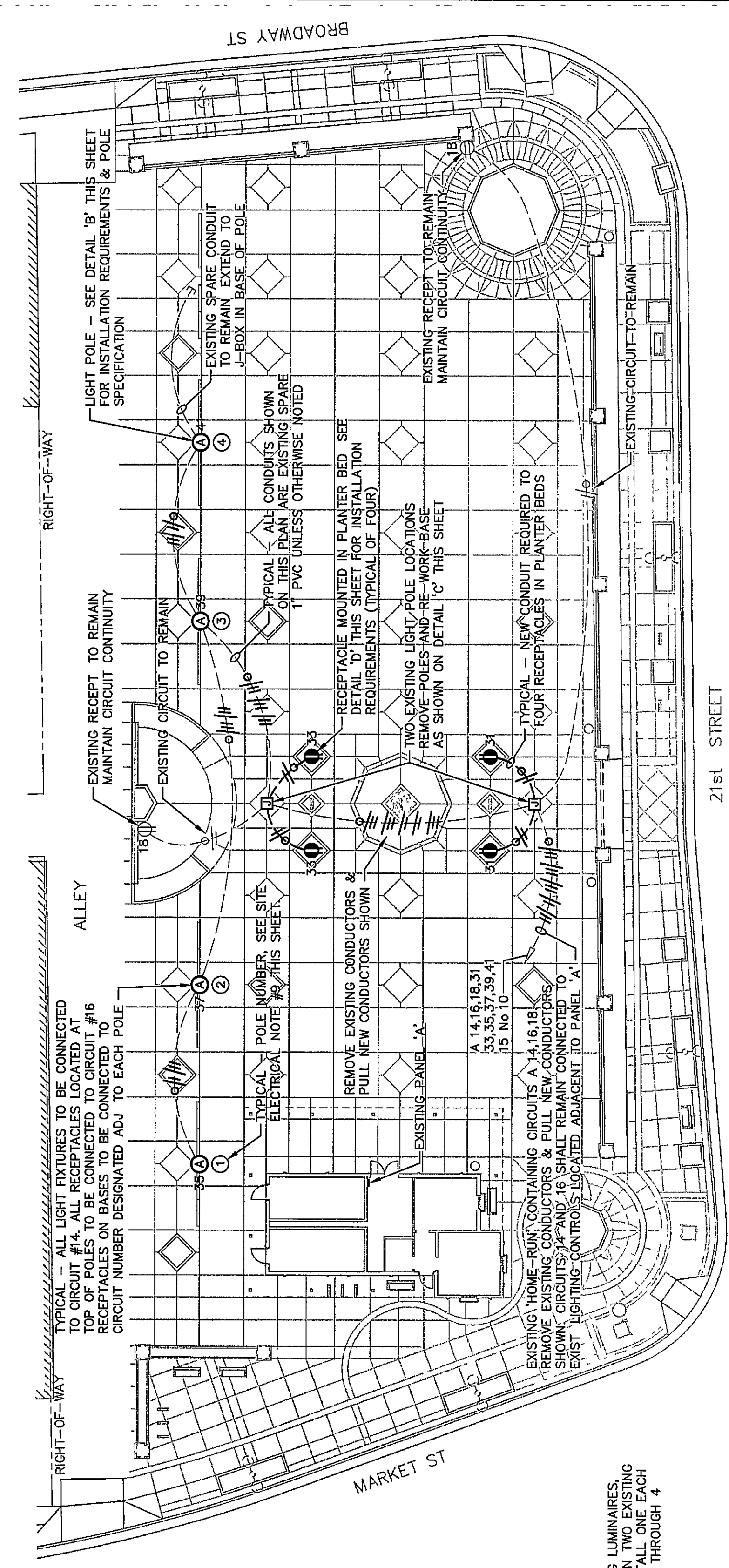


SYMB.	DESCRIPTION	MOUNTING OR AS INDICATED
①	LIGHT FIXTURE WITH LETTER DESIGNATION	POLE
②	GFCI DUPLEX RECEPT (HUBBELL #GFR200CY)	AS NOTED
③	JUNCTION BOX	GRADE
④	ELECTRICAL PANELBOARD (SURFACE MTD.)	WALL
⑤	'HOME RUN' W/2 HOTS, 1 NEUT, 1 GROUND	EARTH
⑥	CONDUIT RUN W/2 HOTS, 1 NEUT, 1 GROUND	EARTH
⑦	GROUND FAULT CIRCUIT INTERRUPTER	

EXISTING PANEL A		S C RATING 22,000 A I C	
TYPE	AL	DESCRIPTION	AMP. MAIN C B
1	0	INTERIOR LIGHTS	20
2	0	RECEPTACLE ROOM 101	20
3	0	RECEPTACLE ROOM 102	20
4	0	RECEPTACLE ROOM 103	20
5	0	OFFICE RECEPTACLES	11
6	0	EXTERIOR LIGHTS AND HOLIDAY RECEPTACLES	30
7	0	EXTERIOR LANTERNS	4
8	0	TOWER LIGHTS	9
9	0	TOWER HOLIDAY RECEPTS	4
10	0	PTAC-1 ROOM 105	13
11	0	PTAC-2 ROOM 106	3.6
12	0	PTAC-3 ROOM 104	3.0
13	0	EUH #1 ROOM 103	5.0
14	0	EUH #2 ROOM 101	5.0
15	0	EUH #3 ROOM 102	5.0
16	0	EUH #4 ROOM 101	5.0
17	0	EUH #5 ROOM 101	5.0
18	0	SOUTH PLANTER RECEPTS	1.0
19	0	NORTH PLANTER RECEPTS	1.0
20	0	RECEPT - POLE BASE #1	1.0
21	0	RECEPT - POLE BASE #2	1.0
22	0	RECEPT - POLE BASE #3	1.0
23	0	RECEPT - POLE BASE #4	1.0
24	0	SPARE	20
25	0	SPARE	20
26	0	SPARE	20
27	0	SPARE	20
28	0	SPARE	20
29	0	SPARE	20
30	0	SPARE	20
31	0	SPARE	20
32	0	SPARE	20
33	0	SPARE	20
34	0	SPARE	20
35	0	SPARE	20
36	0	SPARE	20
37	0	SPARE	20
38	0	SPARE	20
39	0	SPARE	20
40	0	SPARE	20
41	0	SPARE	20
42	0	SPARE	20

PANEL SCHEDULE KEY NOTES:  
 ① ALL LOADS AND CIRCUIT BREAKERS ARE EXISTING EXCEPT AS NOTED BELOW  
 ② CONNECT NEW LOAD TO EXISTING SPARE CIRCUIT BREAKER  
 ③ FURNISH AND INSTALL 20 AMP, 1-POLE, 120V, 22K AIC CIRCUIT BREAKER AND CONNECT NEW LOAD  
 ④ FURNISH AND INSTALL 20 AMP, 1-POLE, 120V, 22K AIC CIRCUIT BREAKER

STATE	PROJECT NO	YEAR	SHEET NO	TOTAL SHEETS
KANSAS	4-53379	2010	19	19

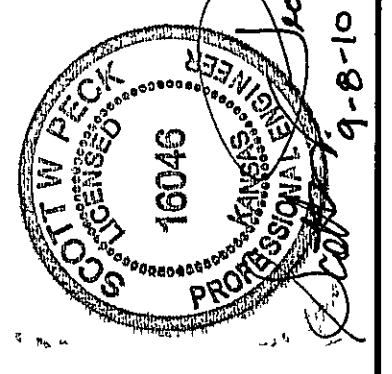


# A SITE ELECTRICAL PLAN

1" = 20'-0"

## SITE ELECTRICAL NOTES.

- 1 ALL WORK SHALL COMPLY WITH THE CURRENT ISSUE OF THE N.E.C. AND ALL LOCAL AMENDMENTS OF THE CITY OF WICHITA, KANSAS
- 2 ELECTRICAL CONTRACTORS SHALL VISIT THE SITE PRIOR TO BID AND FAMILIARIZE THEMSELVES WITH EXISTING CONDITIONS
- 3 MINIMUM CONDUIT SIZE TO BE NO. 10 AWG
- 4 MINIMUM CONDUIT SIZE TO BE 1" TRADE SIZE
- 5 ALL RACEWAYS TO BE PVC SCHEDULE 40 EXCEPT AS NOTED ON THE DRAWINGS
- 6 RACEWAYS FEEDING RECEPTACLES LOCATED IN PLANTER BEDS SHALL BE RIGID GALVANIZED STEEL (RGS)
- 7 NEW CONDUITS TO RECEPTACLES IN PLANTER BEDS SHALL BE PUSHED BENEATH EXISTING PAVING SAW-CUTTING NOT PERMITTED
- 8 CONTRACTOR TO PROVIDE ANY HARDWARE NECESSARY FOR A COMPLETE AND SAFE INSTALLATION INCLUDING NEW ANCHOR BOLTS FOR RELOCATED HOLOPHANE POLES
- 9 STENCIL PAINT POLE NUMBER ON HAND HOLE COVER OF EACH LIGHT POLE NUMBER TO CORRESPOND WITH NUMBERS ON SITE ELECTRICAL PLAN ADHESIVE PLASTIC NUMBERS WILL NOT BE PERMITTED
- 10 REFER TO CIRCUIT DIRECTORY IN PANEL 'A' WITH NEW TYPEWRITTEN DIRECTORY TO INDICATE ALL NEW LOADS, EXISTING LOADS AND SPARE CIRCUIT BREAKERS



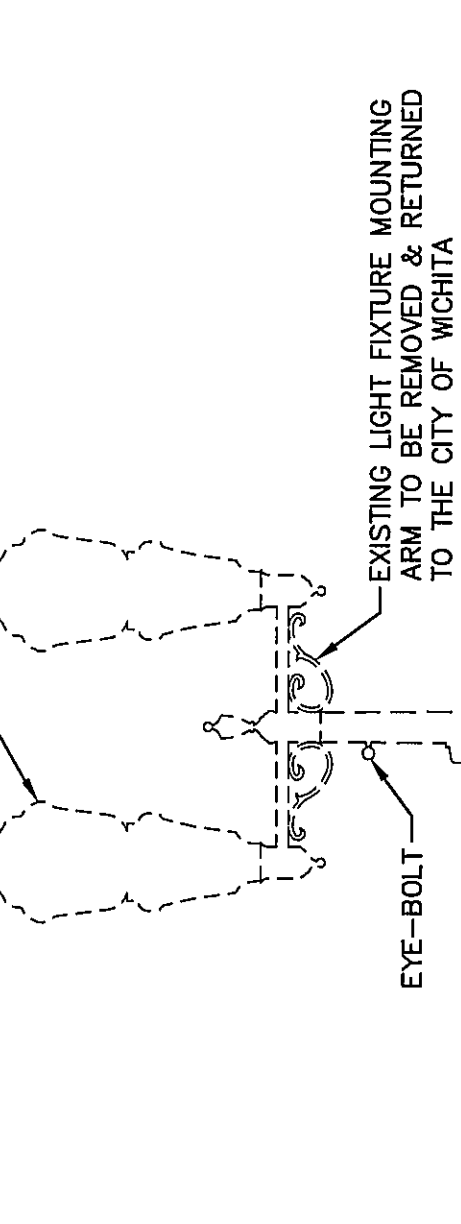
CITY OF WICHITA  
 NOMAR ALLEY  
 RECONSTRUCTION  
 ELECTRICAL SYMBOL LIST, LIGHTING  
 FIXTURE SCHEDULE, DETAILS & NOTES

WICHITA, KANSAS

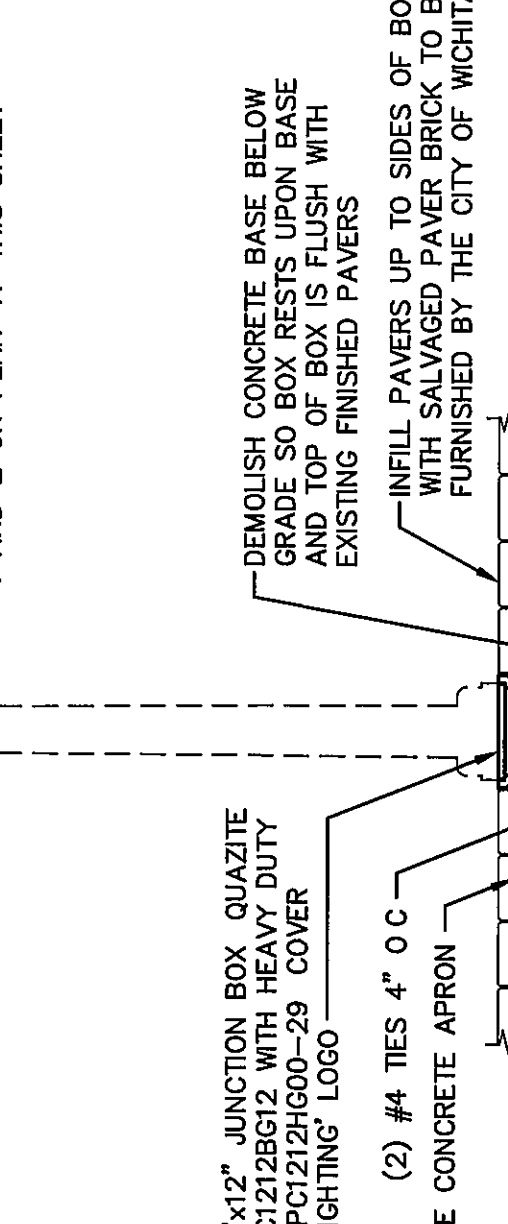
**Law/Kingdon, Inc.**  
 ARCHITECTS, ENGINEERS, PLANNERS  
 & LANDSCAPE ARCHITECTS

PROJECT NO. 435379  
 SHEET NO. 19 OF 19  
 DATE 08-02-2010

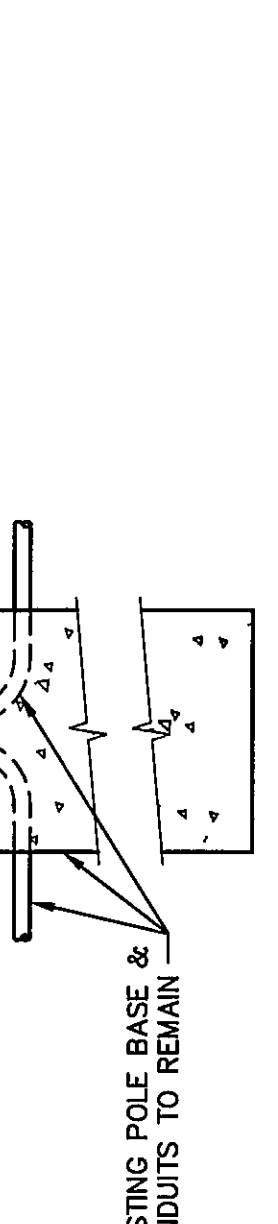
REMOVE TWO EXISTING LUMINAIRES (FOUR TOTAL BETWEEN TWO EXISTING POLES), AND RE-INSTALL ONE EACH ON POLE NUMBERS 1 THROUGH 4



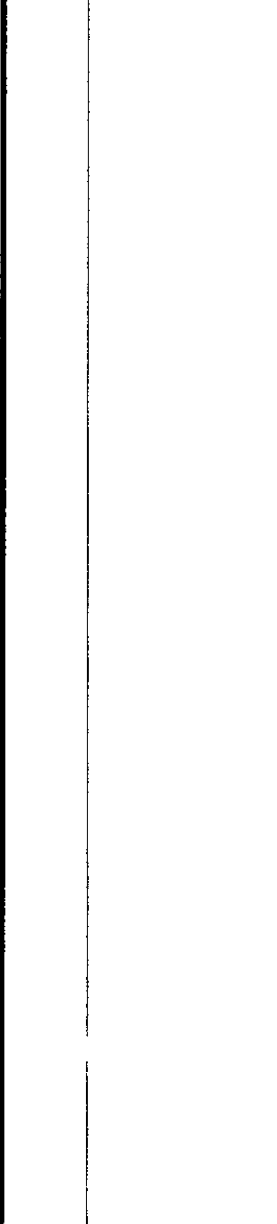
EXISTING 20'-0" TALL ROUND TAPERED STEEL POLE WITH GFCI RECEPTACLE EYE-BOLT TO BE REMOVED & RE-INSTALLED AT LOCATION SHOWN FOR POLE NUMBERS 1 AND 2 ON PLAN 'A' THIS SHEET



DEMOLISH CONCRETE BASE BELOW GRADE SO BOX RESTS UPON BASE AND TOP OF BOX IS FLUSH WITH EXISTING FINISHED PAVERS



INSTALL 12"x12" JUNCTION BOX QUARTZITE COVER NO. PC212H600-29 COVER TO HAVE LIGHTING LOGO



EXISTING POLE BASE & CONDUITS TO REMAIN