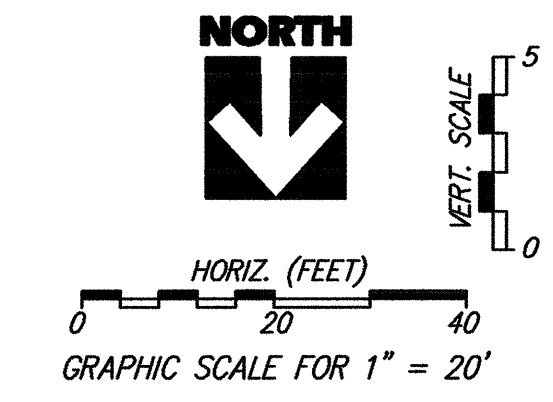
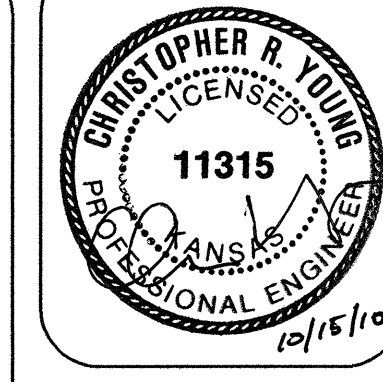


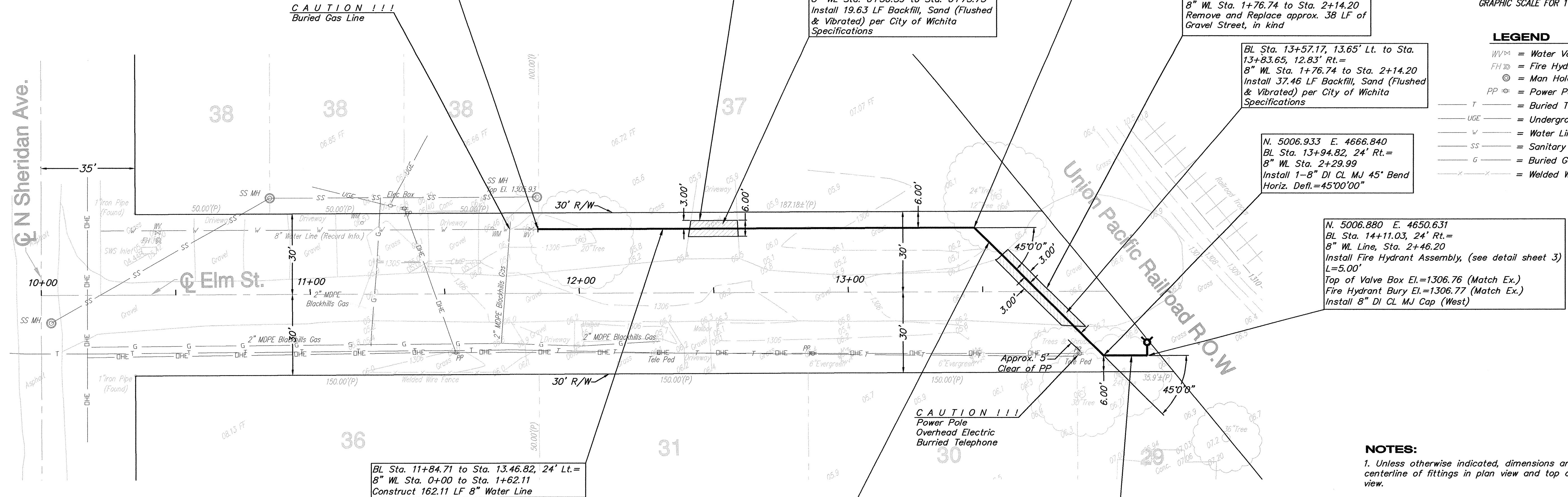
\* Field verify location prior to construction, report any discrepancies to the Engineer.

\*\*Contact the City of Wichita Maintenance Department.

City of Wichita,  
Central Maintenance  
1801 S. McLean Blvd.  
Wichita, KS, 67213  
Phone: (316) 268-4060



- LEGEND**
- WM = Water Valve
  - FH = Fire Hydrant
  - ⊙ = Man Hole
  - PP = Power Pole
  - T = Buried Telephone Line
  - UGE = Underground Electric Line
  - W = Water Line
  - SS = Sanitary Sewer Line
  - G = Buried Gas Line
  - X—X— = Welded Wire Fence



FIRE HYDRANTS REQUIRED			
STATION	BURY LINE ELEVATION	TOP OF PIPE ELEVATION	FIRE HYDRANT BURY REQUIRED*
8" W.L. STA. 2+46.20	1306.77	1302.77	4.0'

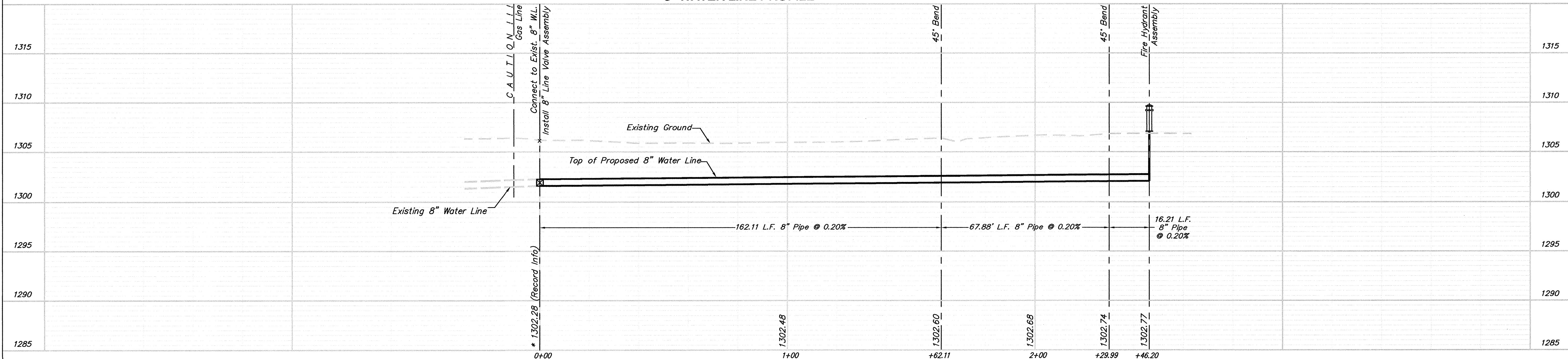
(FOR FIRE HYDRANT ASSEMBLY, SEE DETAIL, SHEET 3)

BL Sta. 11+84.71 to Sta. 13.46.82, 24' Lt. =  
8" WL Sta. 0+00 to Sta. 1+62.11  
Construct 162.11 LF 8" Water Line

BL Sta. 13+46.82, 24' Lt. to Sta. 13+94.82, 24' Rt. =  
8" WL Sta. 1+62.11 to Sta. 2+29.99  
Construct 67.88 LF 8" Water Line

BL Sta. 13+94.82 to Sta. 14+11.03, 24' Rt. =  
8" WL Sta. 2+29.99 to Sta. 2+46.20  
Construct 16.21 LF 8" Water Line

**8" WATER LINE PROFILE**



- NOTES:**
- Unless otherwise indicated, dimensions are measured to centerline of fittings in plan view and top of pipe in profile view.
  - Existing trees to be removed as directed by the field engineer, if necessary.
  - WL Baseline = Centerline of Elm Street Right-of-Way.
  - Add 1300 to existing spot elevations, as shown, for USGS Datum.

**8" WATER LINE PLAN & PROFILE**

To Serve Lots 29, 30, 31 & 37 of  
Davis Gardens Addition  
City of Wichita  
Sedgwick County, Kansas

scale: as noted  
drawn by: dsb  
drawn by: cry  
date: 9/16/10  
P/N: 10-295

revisions:
