

UTILITIES

AT&T, Wichita Central Unit
154 N. Broadway Ave. Rm 110
Wichita, Ks. 67202
John Fagan (316) 268-2102

City of Goddard
118 N. Main St.
Goddard, Ks. 67052
City Clerk Office (316) 794-2441

Cox Communications
901 George Washington Blvd.
Wichita, Ks. 67211
Marc Henderson (316) 260-7745

Kansas Gas Service
1021 E. 26th St. N.
Wichita, Ks. 67219
Jim Coe (316) 832-3126

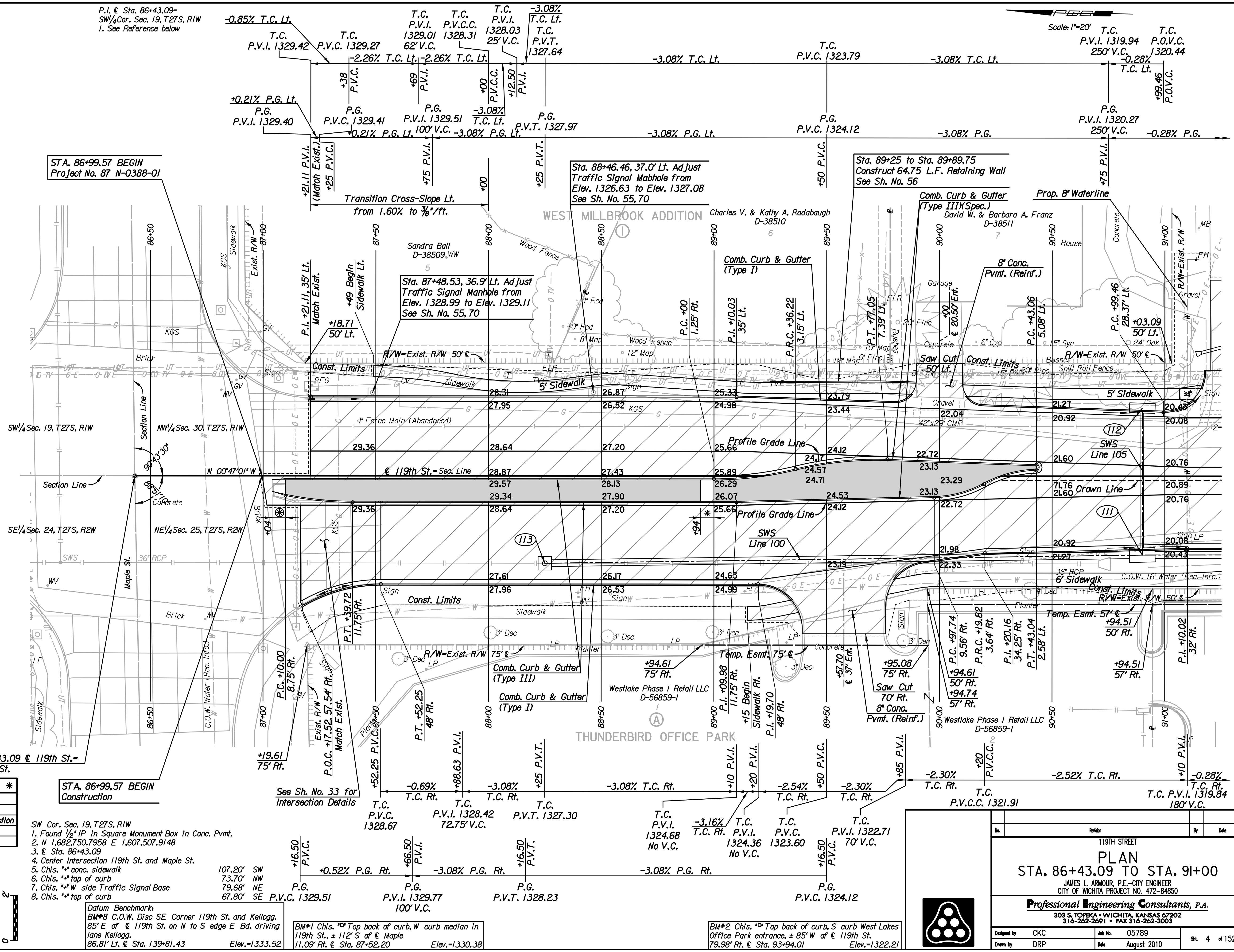
SemCrude, LP
11501 South I-44 Service Rd.
Oklahoma City, Ok. 73173
Tommy Green (405) 692-5137

Westar Energy
1900 E. Central Ave.
P.O. Box 208
Wichita, Ks. 67201
Randy Truitt (316) 261-6512

Wichita Water and Sewer Department
8th Floor - City Hall
455 N. Main St.
Wichita, Ks. 67202
Bill Perkins or Paul Bryant (316) 268-4555

P.I. @ Sta. 86+43.09=
SW 1/4 Cor. Sec. 19, T27S, R1W
I. See Reference below

Scale: 1"=20'
T.C. P.V.I. 1319.94 P.O.V.C. 1320.44
250' V.C. -0.28%
T.C. Lt. P.O.V.C. Lt.



LEGEND

- Pavement Removal
 - Wheelchair Ramp w/ Detectable Warning
 - 6' transition from Combined Curb & Gutter (Type III) to no curb.
 - 6' transition from Combined Curb & Gutter (Type III) to Combined Curb & Gutter (Type III) (Special).
- Utilities**
- Gas Kansas Gas Service
 - Power Westar Energy
 - Telephone AT&T
 - Television Cox Communication
 - Water Wichita Water and Sanitary Sewer

Note: Elevations shown along Curb and Gutter are to High Edge and Top of Curb.

REMOVAL OF EXISTING STRUCTURES *		
STATION	SIDE	ITEM
88+60	Lt.	Sign
89+46.5	Rt.	249' of 36" RCP and End Section
90+01	Lt.	42'x29' CMP
90+71	Rt.	36" RCP End Section

* For Information Only



PLAN: Lat. & Long.
PROFILE: Horiz. same as above
Vert.

- SW Cor. Sec. 19, T27S, R1W
1. Found 1/2" IP in Square Monument Box in Conc. Pvmt.
2. N 1,682,750.7958' E 1,607,507.9148'
3. @ Sta. 86+43.09
4. Center Intersection 119th St. and Maple St.
5. Chis. ** conc. sidewalk 107.20' SW
6. Chis. ** top of curb 73.70' NW
7. Chis. ** W side Traffic Signal Base 79.68' NE
8. Chis. ** top of curb 67.80' SE

Datum Benchmark:
BM#8 C.O.W. Disc SE Corner 119th St. and Kellogg.
85' E of @ 119th St. on N to S edge E Bd. driving lane Kellogg.
86.81' Lt. @ Sta. 139+81.43 Elev. = 1333.52

BM#1 Chis. ** Top back of curb, W curb median in 119th St., ± 112' S of @ Maple 11.09' Rt. @ Sta. 87+52.20 Elev. = 1330.38

BM#2 Chis. ** Top back of curb, S curb West Lakes Office Park entrance, ± 85' W of @ 119th St. 79.98' Rt. @ Sta. 93+94.01 Elev. = 1322.21

119TH STREET		Revision	By	Date	
<p>PLAN STA. 86+43.09 TO STA. 91+00</p> <p>JAMES L. ARMOUR, P.E. - CITY ENGINEER CITY OF WICHITA PROJECT NO. 472-84850</p> <p>Professional Engineering Consultants, P.A. 303 S. TOPEKA - WICHITA, KANSAS 67202 316-262-2691 • FAX 316-262-3003</p>					
Designed by	CKC	Job No.	05789	Sheet	4 of 152
Drawn by	DRP	Date	August 2010		

PLOTTED BY: djb Date: 8/26/2010 2:00:27 PM
 FILE: I:\2005\05789\Plan\05189-pl085.dgn