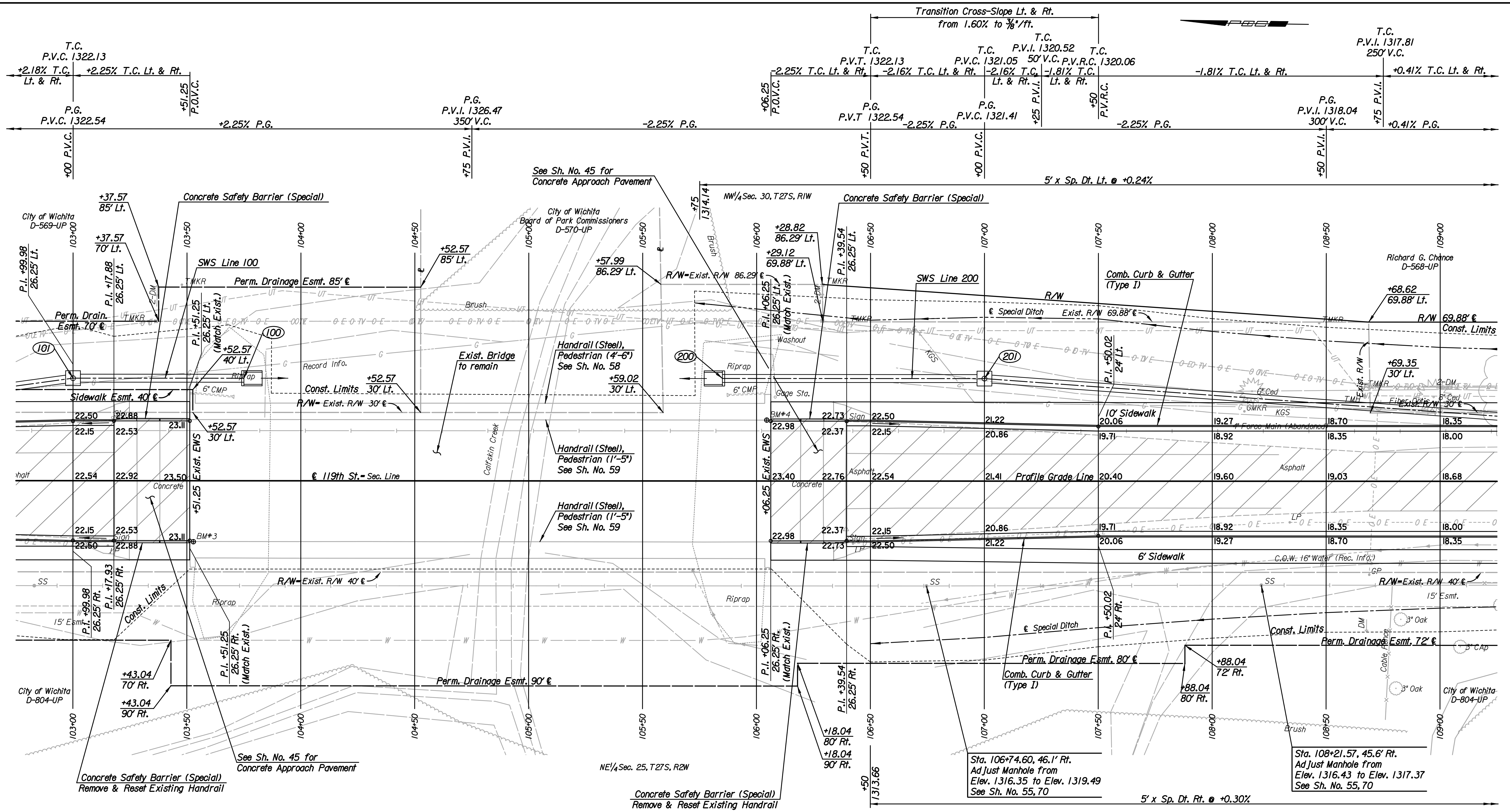


Plotted By: dib Date: 9/7/2010 6:25:23 AM
 FILE: I:\2005\05789\Plan\05189-pl03.dgn



REMOVAL OF EXISTING STRUCTURES *		
STATION	SIDE	ITEM
103+17	Lt.	Sign
103+17	Rt.	Sign
106+40	Lt.	Sign
106+40	Rt.	Sign

* For Information Only

- Utilities**
- Gas: Kansas Gas Service
 - Power: Westar Energy
 - Sanitary Sewer: Wichita Water and Sanitary Sewer
 - Telephone: AT&T
 - Television: Cox Communication
 - Water: Wichita Water and Sanitary Sewer

BM#3 Found C.O.W. Disc in top W hubguard on N end of bridge over Calfskin Creek
 26.77' Rt. & Sta. 103+52.85 Elev. = 1325.61

BM#4 Found C.O.W. Disc in top E hubguard on S end of bridge over Calfskin Creek
 26.75' Lt. & Sta. 106+04.46 Elev. = 1325.63

No.	Revision	By	Date
PLAN STA. 103+00 TO STA. 109+00 JAMES L. ARMOUR, P.E. - CITY ENGINEER CITY OF WICHITA PROJECT NO. 472-84850			
Professional Engineering Consultants, P.A. 303 S. TOPEKA - WICHITA, KANSAS 67202 316-262-2691 • FAX 316-262-3003			
Designed by	CKC	Job No.	05789
Drawn by	DRP	Date	August 2010
			Sh. 7 of 152