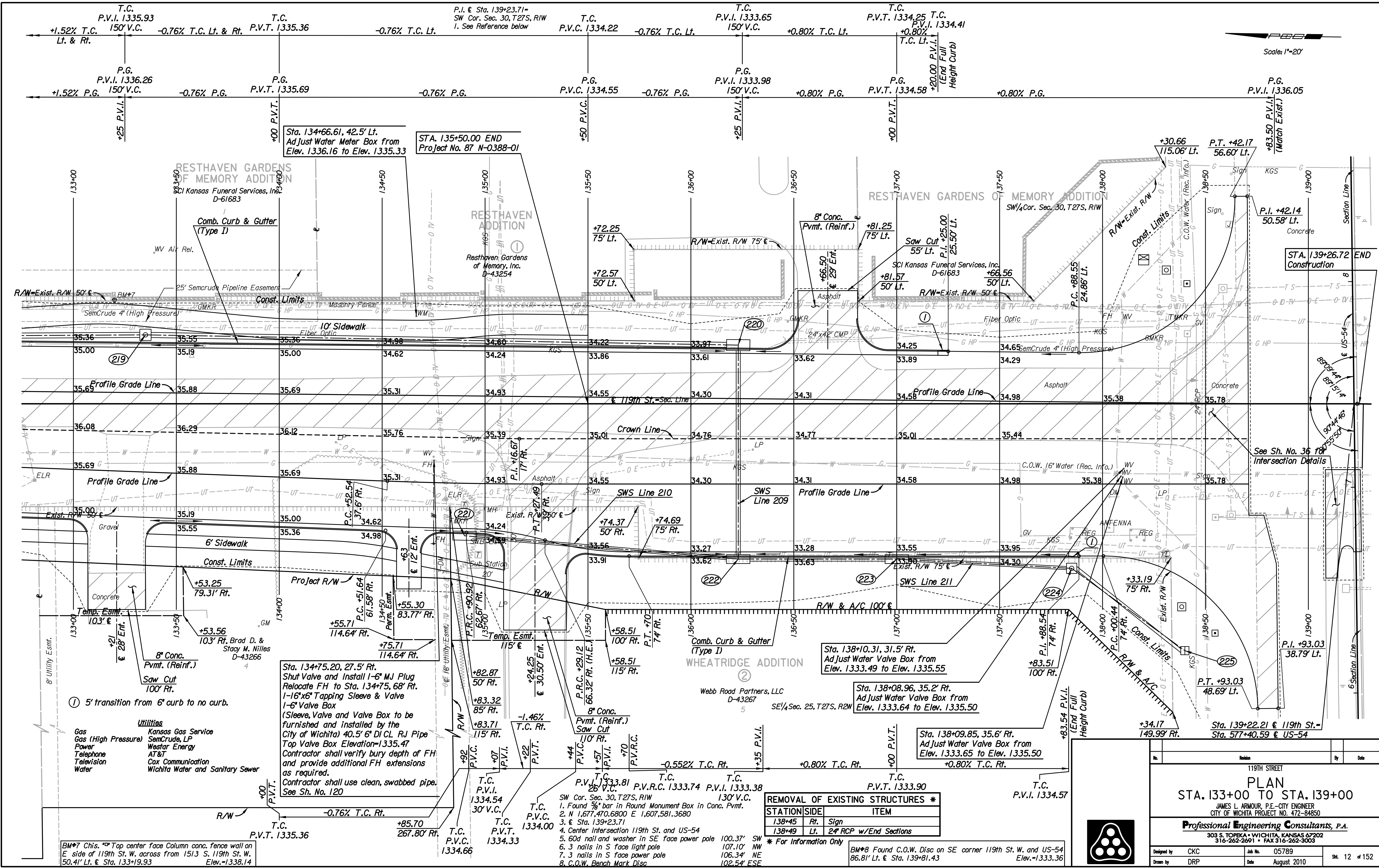


Plotted By: djb Date: 8/26/2010 2:41:01 PM  
 FILE: I:\2005\05789\Plan\05189-pl153.dgn



BM#7 Chis. Top center face Column conc. fence wall on E side of 119th St. W. across from 1513 S. 119th St. W. 50.41' Lt. & Sta. 133+19.93 Elev. +1338.14

Sta. 134+75.20, 27.5' Rt. Shut Valve and Install 1-6" M.J Plug Relocate FH to Sta. 134+75, 68' Rt. 1-16"x6" Tapping Sleeve & Valve 1-6" Valve Box (Sleeve, Valve and Valve Box to be furnished and installed by the City of Wichita) 40.5' 6" DI CL RJ Pipe Top Valve Box Elevation=1335.47 Contractor shall verify bury depth of FH and provide additional FH extensions as required. Contractor shall use clean, swabbed pipe. See Sh. No. 120

Sta. 134+75.20, 27.5' Rt. Shut Valve and Install 1-6" M.J Plug Relocate FH to Sta. 134+75, 68' Rt. 1-16"x6" Tapping Sleeve & Valve 1-6" Valve Box (Sleeve, Valve and Valve Box to be furnished and installed by the City of Wichita) 40.5' 6" DI CL RJ Pipe Top Valve Box Elevation=1335.47 Contractor shall verify bury depth of FH and provide additional FH extensions as required. Contractor shall use clean, swabbed pipe. See Sh. No. 120

Sta. 138+10.31, 31.5' Rt. Ad Just Water Valve Box from Elev. 1333.49 to Elev. 1335.55

Sta. 138+08.96, 35.2' Rt. Ad Just Water Valve Box from Elev. 1333.64 to Elev. 1335.50

Sta. 138+09.85, 35.6' Rt. Ad Just Water Valve Box from Elev. 1333.65 to Elev. 1335.50

Sta. 139+22.21 & 119th St. = Sta. 577+40.59 & US-54

**REMOVAL OF EXISTING STRUCTURES \***

STATION	SIDE	ITEM
138+45	Rt.	Sign
138+49	Lt.	2" RCP w/End Sections

\* For Information Only

BM#8 Found C.O.W. Disc on SE corner 119th St. W. and US-54 86.81' Lt. & Sta. 139+81.43 Elev. =1333.36

119TH STREET

**PLAN**  
 STA. 133+00 TO STA. 139+00

JAMES L. ARMOUR, P.E.—CITY ENGINEER  
 CITY OF WICHITA PROJECT NO. 472-84850

**Professional Engineering Consultants, P.A.**  
 303 S. TOPKA • WICHITA, KANSAS 67202  
 316-262-2691 • FAX 316-262-3003

Designed by	CKC	Job No.	05789
Drawn by	DRP	Date	August 2010

Sh. 12 of 152