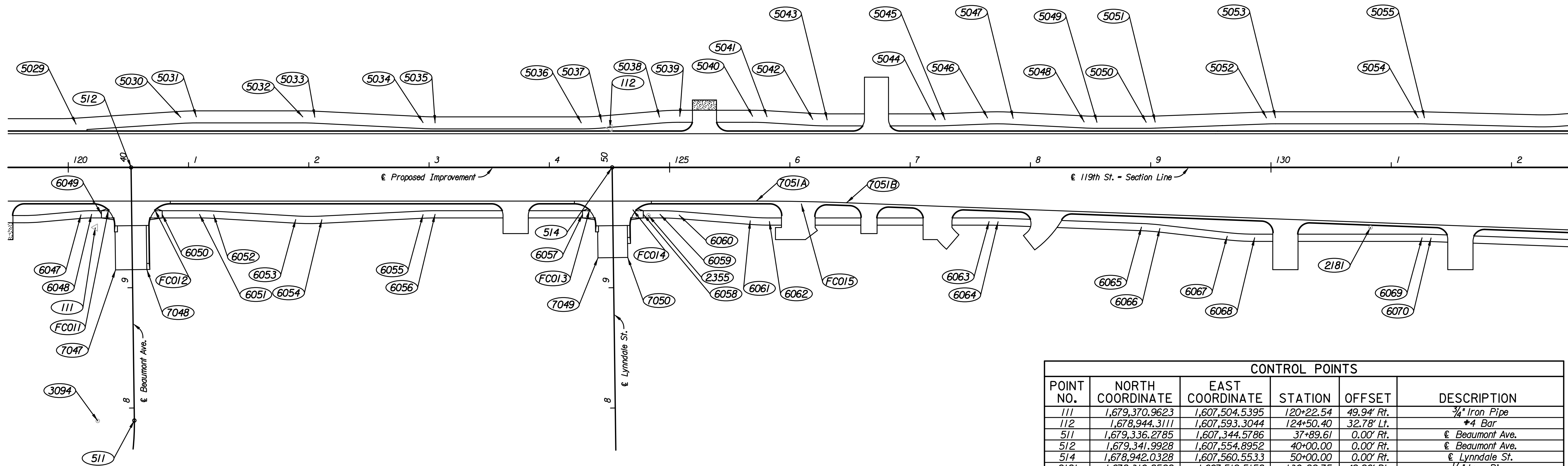


COORDINATE TABLE					
POINT NO.	NORTH COORDINATE	EAST COORDINATE	STATION	OFFSET	DESCRIPTION
7047	1,679,353.6790	1,607,469.5463	39+15.00	14.00' Lt.	Edge of Pavement
7048	1,679,327.6886	1,607,470.2525	39+15.00	12.00' Rt.	Edge of Pavement
7049	1,678,952.7411	1,607,485.2347	49+25.00	12.75' Lt.	Edge of Pavement
7050	1,678,928.0002	1,607,485.9069	49+25.00	12.00' Rt.	Edge of Pavement

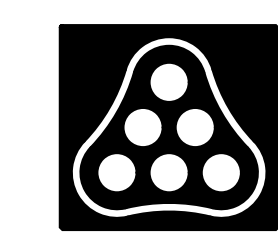
See Sh. No. 18 for Sidewalk Coordinate Table (Point Nos. 5000-6157)



CONTROL POINTS					
POINT NO.	NORTH COORDINATE	EAST COORDINATE	STATION	OFFSET	DESCRIPTION
111	1,679,370.9623	1,607,504.5395	120+22.54	49.94' Rt.	3/4" Iron Pipe
112	1,678,944.3111	1,607,593.3044	124+50.40	32.78' Lt.	#4 Bar
511	1,679,336.2785	1,607,344.5786	37+89.61	0.00' Rt.	€ Beaumont Ave.
512	1,679,341.9928	1,607,554.8952	40+00.00	0.00' Rt.	€ Beaumont Ave.
514	1,678,942.0328	1,607,560.5533	50+00.00	0.00' Rt.	€ Lynndale St.
2181	1,678,310.8528	1,607,519.5158	130+82.75	49.96' Rt.	1/2" Iron Pipe
2355	1,678,911.2531	1,607,521.0483	124+82.43	39.94' Rt.	3/4" Iron Pipe
3094	1,679,366.7239	1,607,343.8179	120+24.50	210.71' Rt.	3/4" Iron Pipe

CURVE DATA													
NO.	Δ	R	T	L	E	P.C. COORDINATES		P.I. COORDINATES		P.T. COORDINATES		C.C. COORDINATES	
						NORTH	EAST	NORTH	EAST	NORTH	EAST	NORTH	EAST
FC011	89°15'15" Rt.	18.00'	17.77'	28.04'	7.29'	1,679,372.9431	1,607,524.4543	1,679,355.1777	1,607,524.7057	1,679,354.6951	1,607,506.9450	1,679,372.6885	1,607,506.4561
FC012	90°44'45" Rt.	18.00'	18.24'	28.51'	7.62'	1,679,326.6828	1,607,506.8726	1,679,327.1781	1,607,525.1018	1,679,308.9441	1,607,525.3597	1,679,308.6895	1,607,507.3615
FC013	89°15'15" Rt.	18.00'	17.77'	28.04'	7.29'	1,678,972.9831	1,607,530.1124	1,678,955.2177	1,607,530.3638	1,678,954.7352	1,607,512.6031	1,678,972.7285	1,607,512.1142
FC014	90°44'45" Rt.	18.00'	18.24'	28.51'	7.62'	1,678,926.7229	1,607,512.5307	1,678,927.2181	1,607,530.7599	1,678,908.9841	1,607,531.0178	1,678,908.7295	1,607,513.0196
FC015	02°08'51" Rt.	1998.00'	37.45'	74.89'	0.35'	1,678,821.7341	1,607,532.2521	1,678,784.2885	1,607,532.7818	1,678,746.8494	1,607,531.9080	1,678,793.4719	1,605,534.4520

Plotted By: djb Date: 9/7/2010 6:30:25 AM
 FILE: I:\2005\05789\Geometry\05789-Cogol20+00.dgn



Revision		By	Date
119TH STREET			
COORDINATE GEOMETRY PLAN			
STA. 120+00 TO STA. 132+00			
JAMES L. ARMOUR, P.E. - CITY ENGINEER CITY OF WICHITA PROJECT NO. 472-84850			
Professional Engineering Consultants, P.A. 303 S. TOPEKA - WICHITA, KANSAS 67202 316-262-2691 • FAX 316-262-3003			
Designed by	CKC	Job No.	05789
Drawn by	CP	Date	August 2010
			Sht. 16 of 152