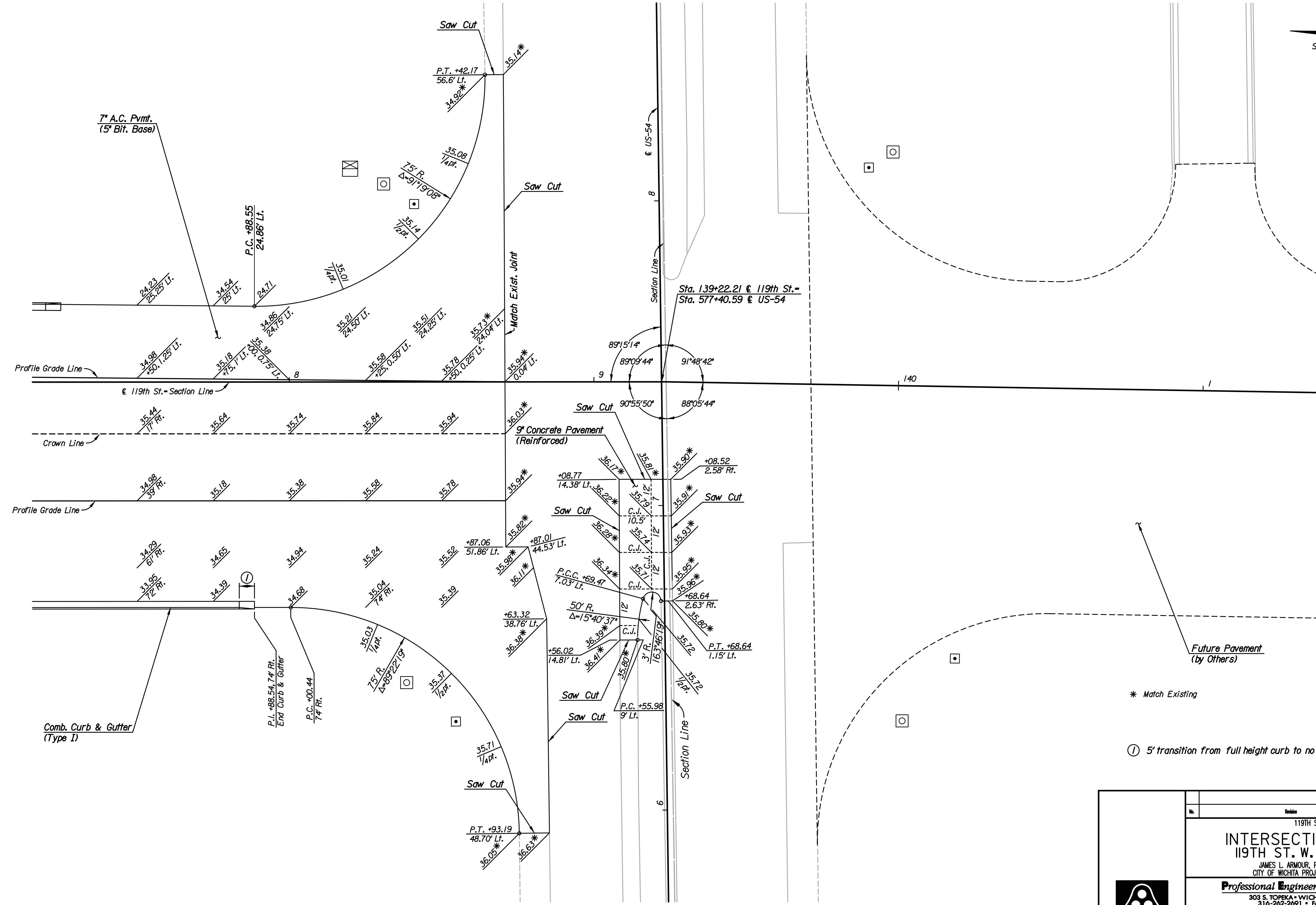


Scale: 1"=15'



* Match Existing

① 5' transition from full height curb to no curb.

Plotted By: dib Date: 8/26/2010 3:42:33 PM
 FILE: I:\2005\05789\Intersections\05789-119th-119th-Kellogg.dgn

No.	Revision	By	Date
119TH STREET			
INTERSECTION DETAIL			
119TH ST. W. AND US-54			
JAMES L. ARMOUR, P.E.—CITY ENGINEER CITY OF WICHITA PROJECT NO. 472-34850			
Professional Engineering Consultants, P.A.			
303 S. TOPEKA • WICHITA, KANSAS 67202 316-262-2691 • FAX 316-262-3003			
Designed by	CKC	Job No.	05789
Drawn by	DRP	Date	August 2010

Sht. 36 of 152