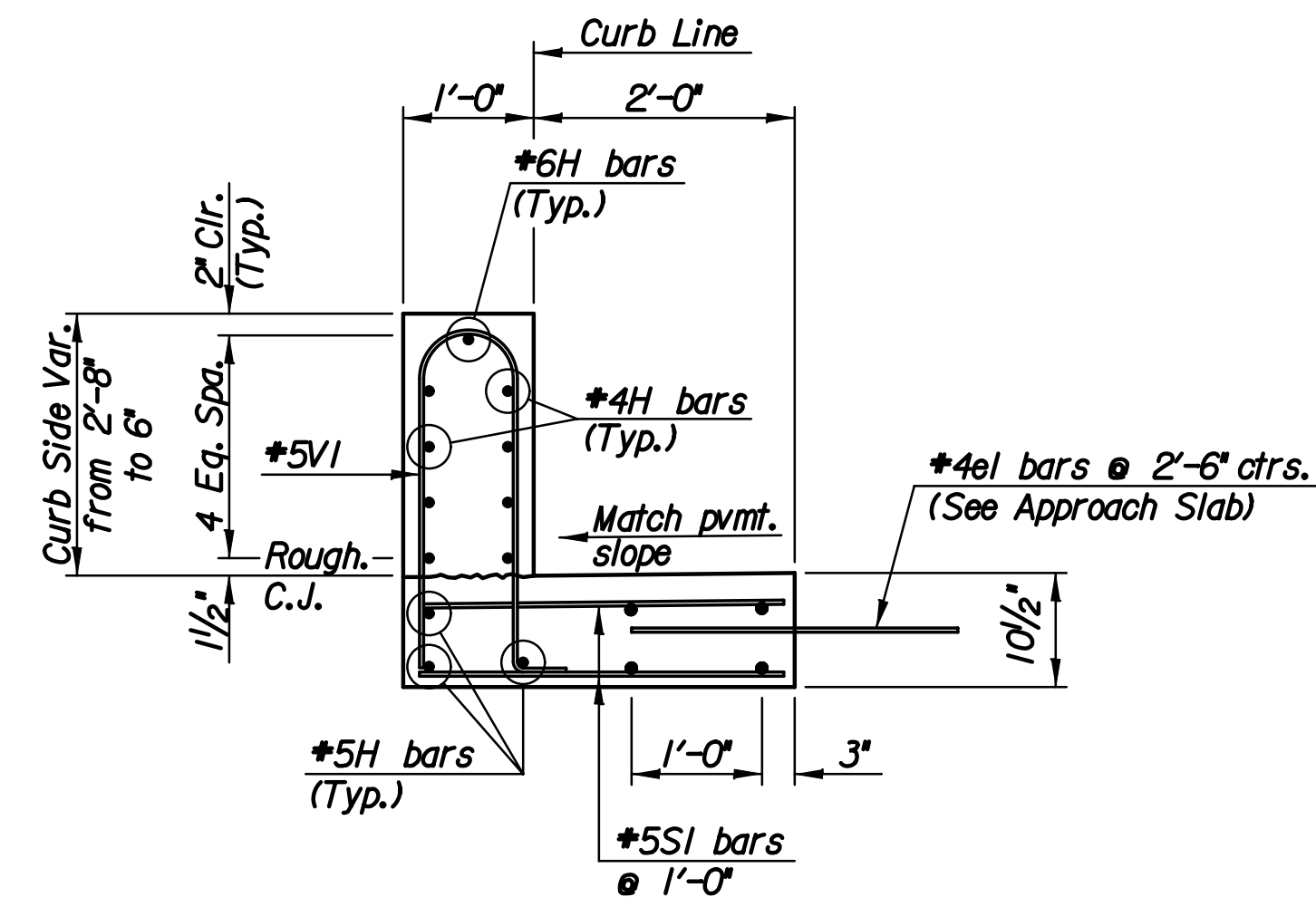


ELEVATION



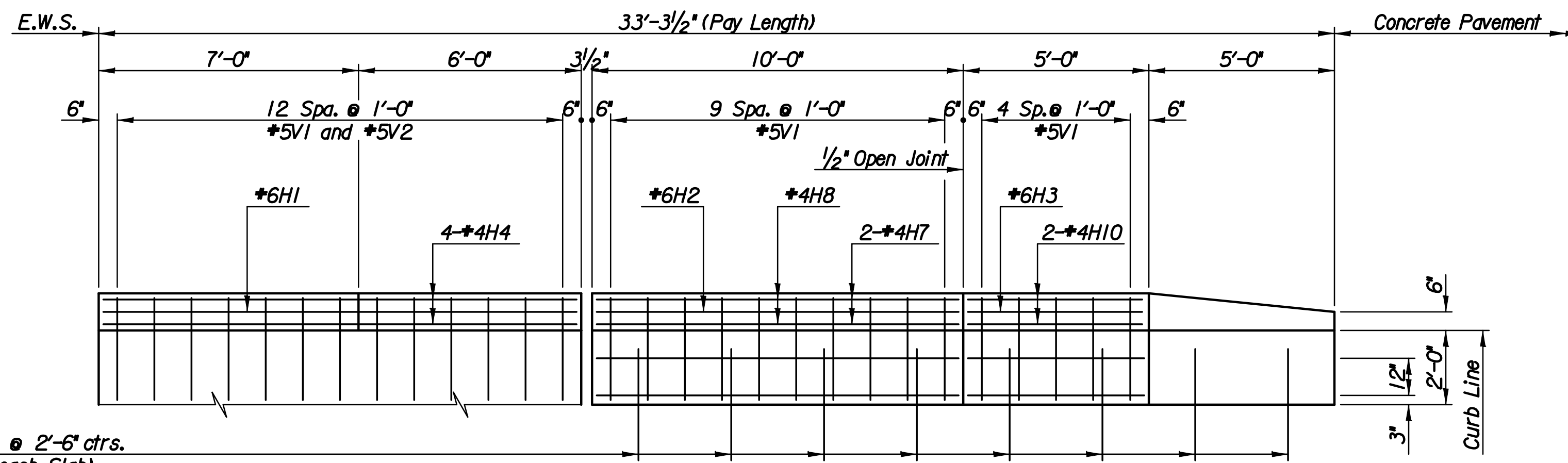
SECTION A-A

Adjust Flowline and Cross Slope in 5'-0" to Match Combined Curb and Gutter.

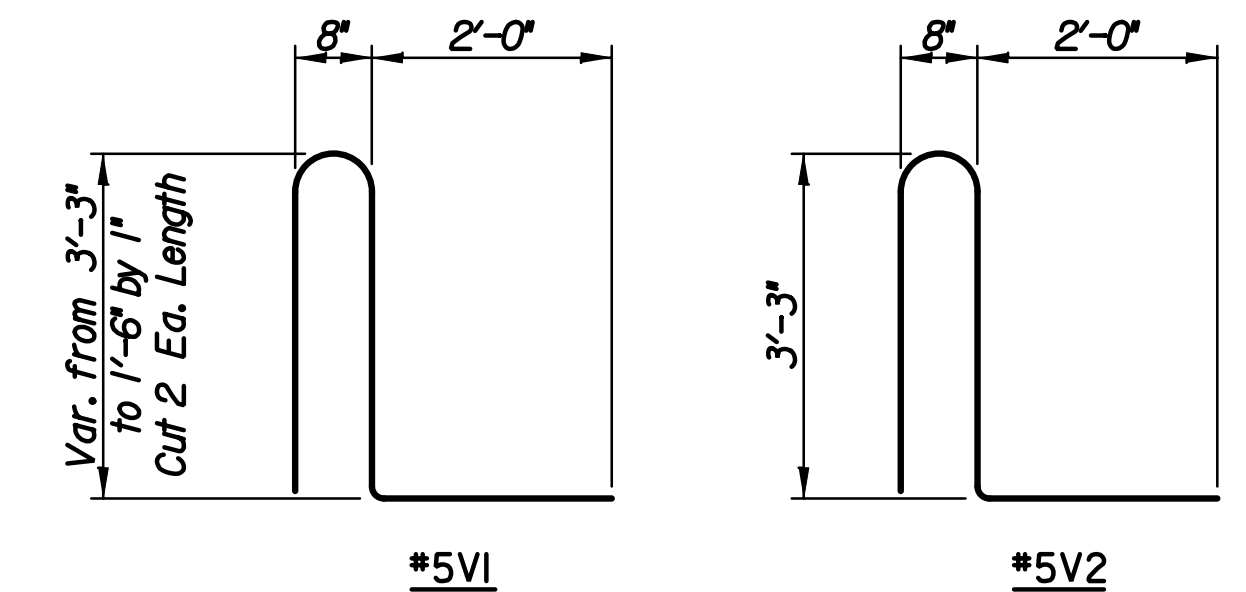
BILL OF MATERIALS (ONE END)							
REINFORCING STEEL							
Mark	No.	Size	Length	Mark	No.	Size	Length
H1	1	#6	12'-10"	H6	7	#5	9'-9"
H2	1	#6	9'-9"	H7	4	#4	9'-9"
H3	1	#6	4'-9"	H8	2	#4	8'-0"
H4	8	#4	12'-9"	H9	7	#4	4'-8"
H5	3	#5	12'-9"	H10	4	#4	4'-8"
				SI	56	#5	2'-8"
V1	21	#5	Varies				
V2	7	#5	8'-3"				
V3	3	#8	1'-0"				

* SUMMARY OF QUANTITIES		
Item	Quantity	Unit
Concrete (Gr. 60) (AE)	4.2	C.Y.
Reinforcing Steel (Gr. 60) (Epoxy)	658	Lbs.

\* For Information Only (Total - 1 End) (4 Required)



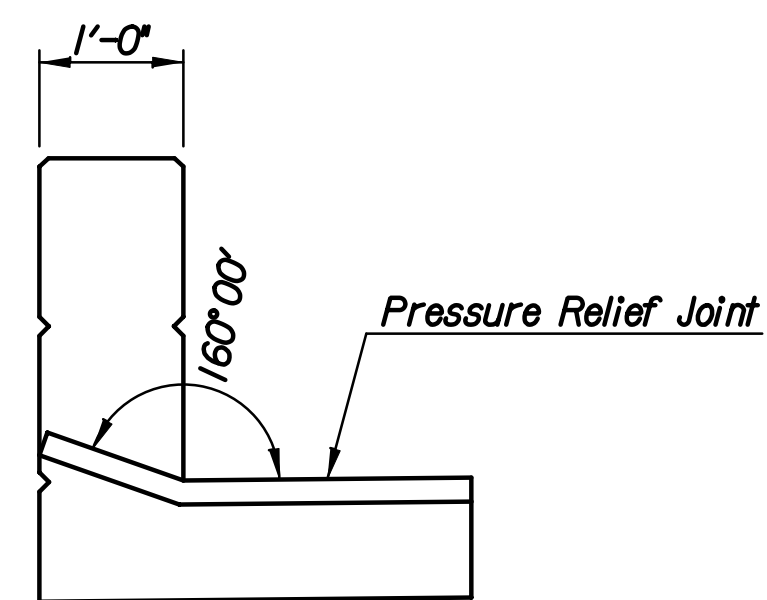
PLAN



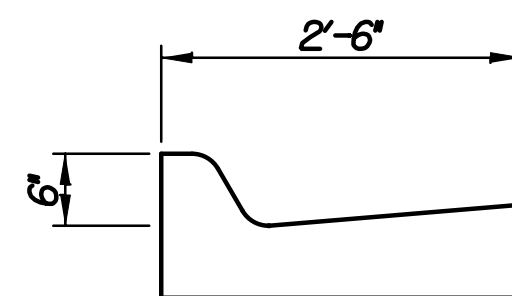
BENDING DIAGRAMS

Dimensions are out to out of bars.

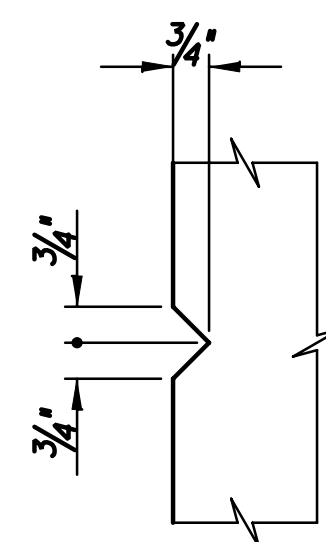
\*4el bars @ 2'-6" ctrs. (See Approach Slab)



TYPICAL BARRIER JOINT TREATMENT



SECTION B-B



TYPICAL 3/4" TRIANGULAR GROOVE DETAIL

CONCRETE SAFETY BARRIER (SPECIAL) (AE) NOTES

The "Concrete Safety Barrier (Special)(AE)" shall be constructed of Concrete (Grade 4.0)(AE) and A-615 Grade 60 reinforcing steel.

The 2'-8" sections of the barrier shall be grooved with a 3/4" chamfer strip on all exposed edges.

The bid item "Concrete Safety Barrier (Special) (AE)" measured per lined foot as per plan, shall be full compensation for furnishing all materials, equipment and labor necessary.

Plotted By: dib Date: 8/27/2010 8:53:47 AM  
 File: I:\2005\05789\Details\05789-TransBarrier.dgn

No.	Revision	By	Date
119TH STREET			
<b>TRANSITION BARRIER DETAILS</b>			
JAMES L. ARMOUR, P.E. - CITY ENGINEER CITY OF WICHITA PROJECT NO. 472-34850			
<b>Professional Engineering Consultants, P.A.</b> 303 S. TOPEKA - WICHITA, KANSAS 67202 316-262-2691 • FAX 316-262-3003			
Designed by	R.A.S.	Job No.	05789
Drawn by	W.L.L.	Date	August 2010