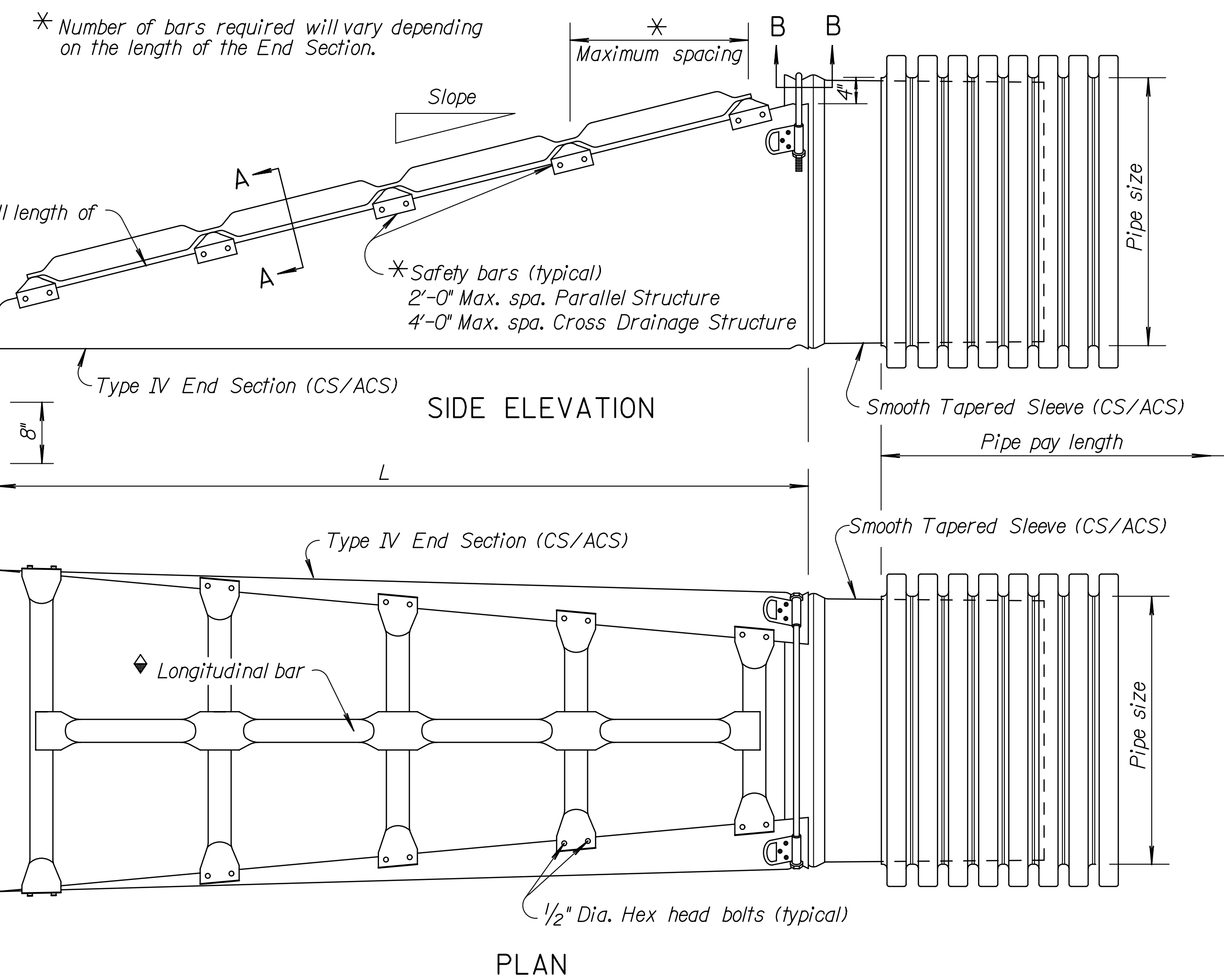
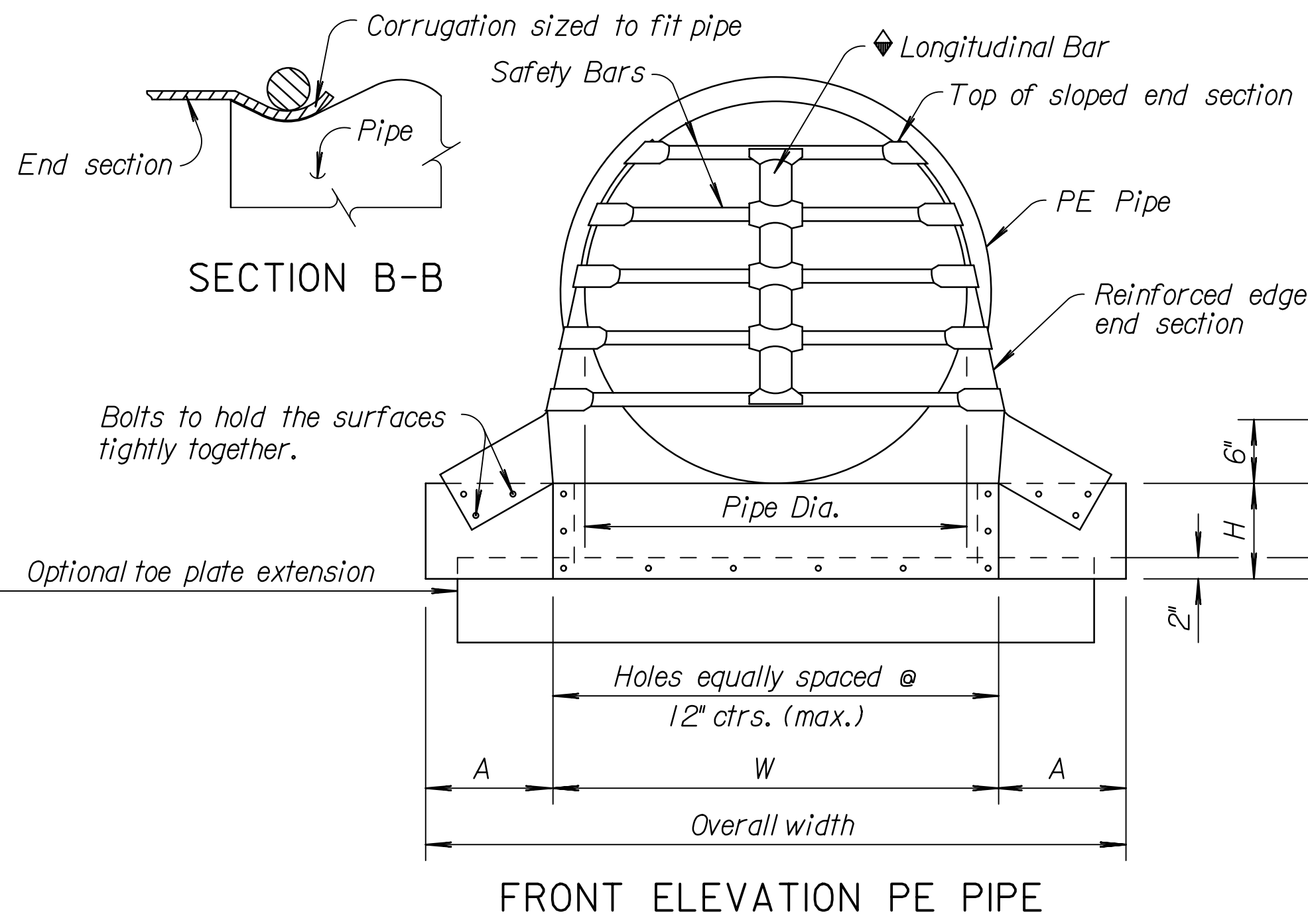


| | | | | |
|--------|--------------|------|-----------|--------------|
| STATE | PROJECT NO. | YEAR | SHEET NO. | TOTAL SHEETS |
| KANSAS | 87 N-0388-01 | 2010 | 63 | 152 |

Note to Designer: KDOT Pipe Policy provides guidance in identifying the prohibited and/or restricted uses of CSP, ACSP, PEP, PVC/P, CAP & RCP. Provide end sections of the same type and coating as the pipe. Exceptions to this are noted in the Standard Specifications. Refer to the KDOT Design Manual, Volume I (Part C), Road Section, "Elements of Drainage & Culvert Design" for structural pipe design information which includes: corrugations, sizes, gauges, maximum/minimum fill heights and classes of pipe.



GENERAL NOTES

The culvert type shall meet the KDOT Pipe Policy & Standard Specifications.

The size of pipe designated on the plan shall be the nominal inside diameter of a two wall corrugated PE pipe (Type S).

Couplings shall be designed to cover at least two full corrugation on each side of a joint.

No additional payment shall be made for any gain in length due to the fit of the pipe at connections.

All corrugated PE pipe, end sections, couplings, and fittings shall conform with the Standard Specifications.

See Standard Specifications for PE Pipe bedding and backfill.

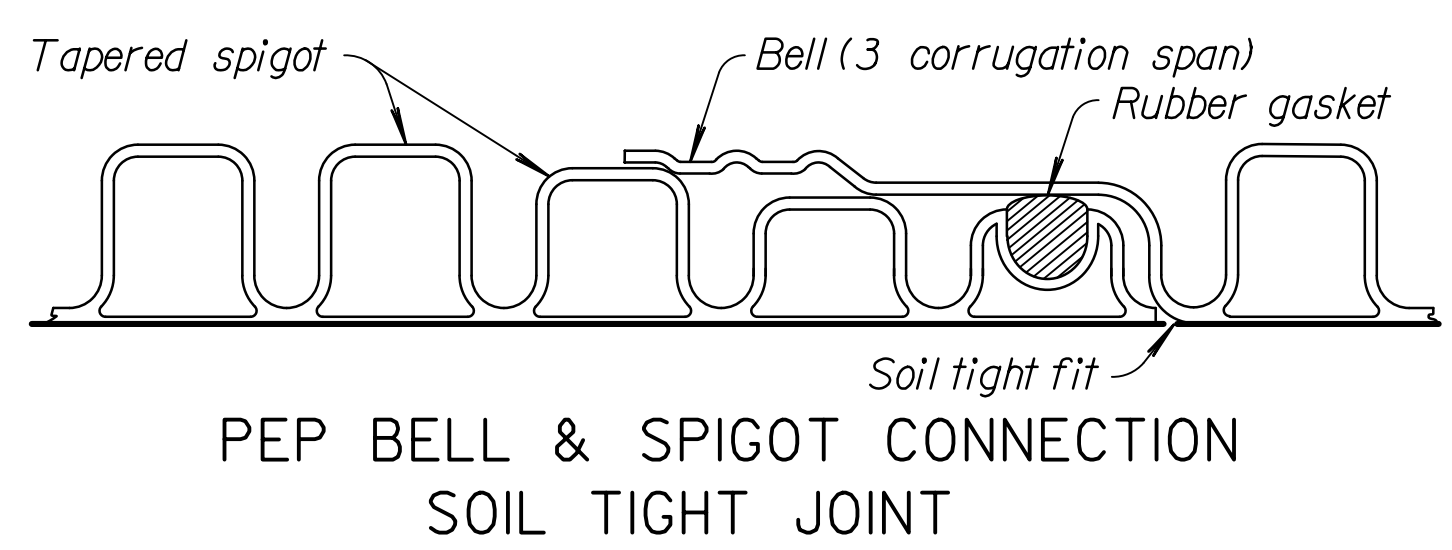
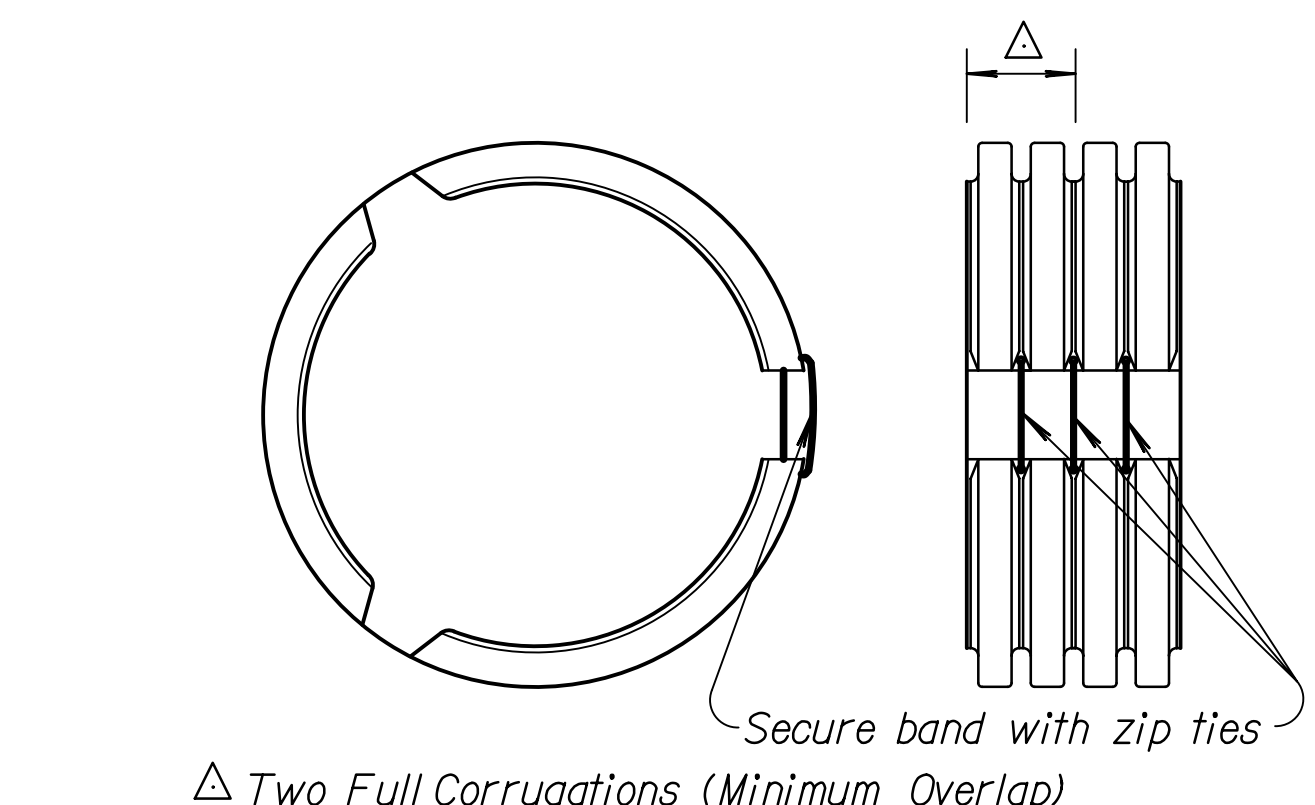
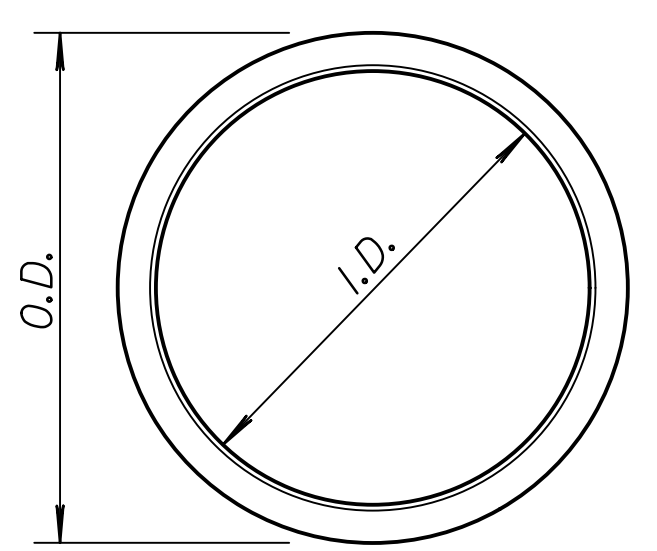
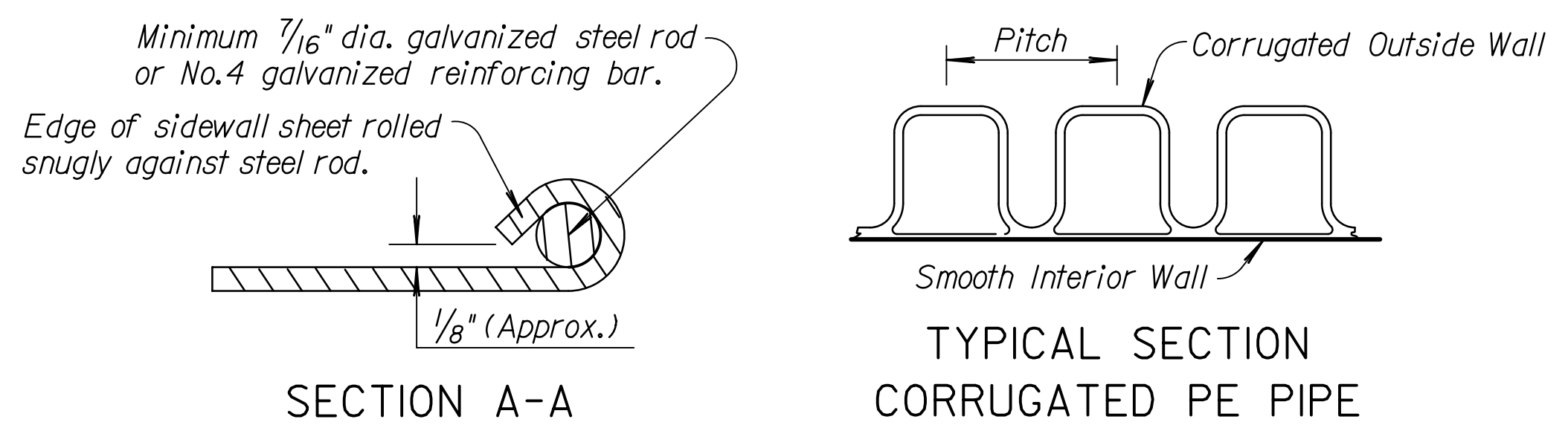
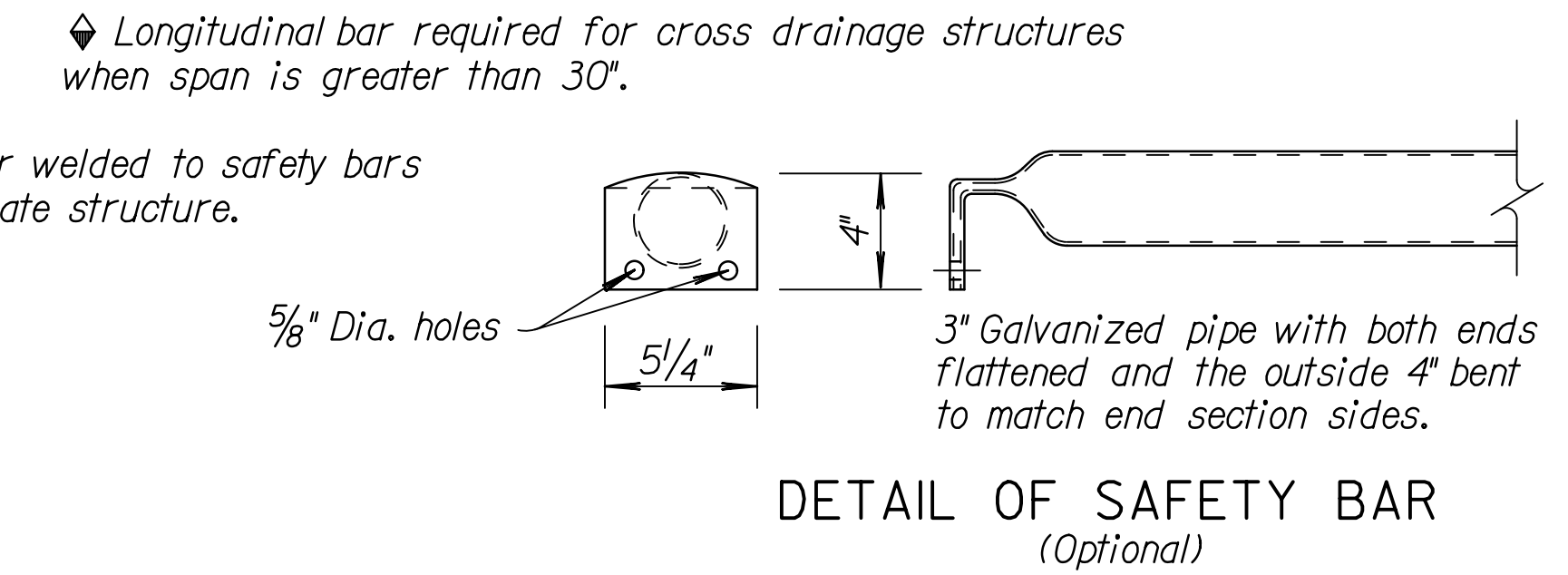
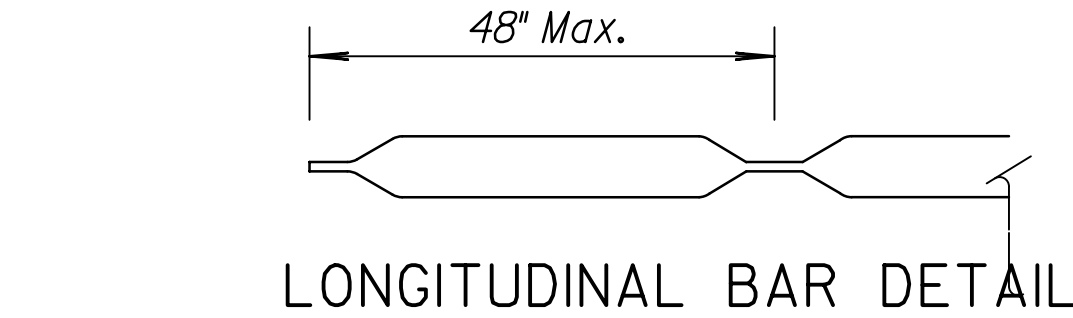
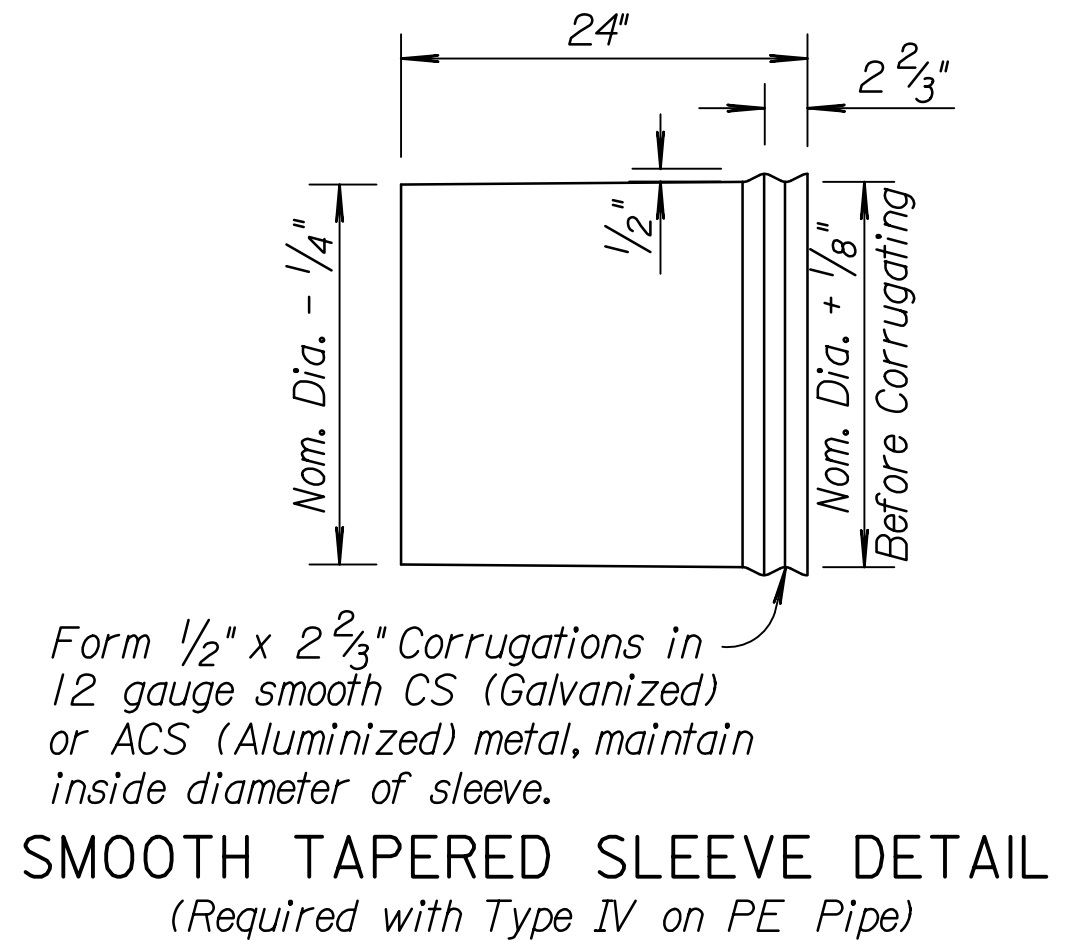
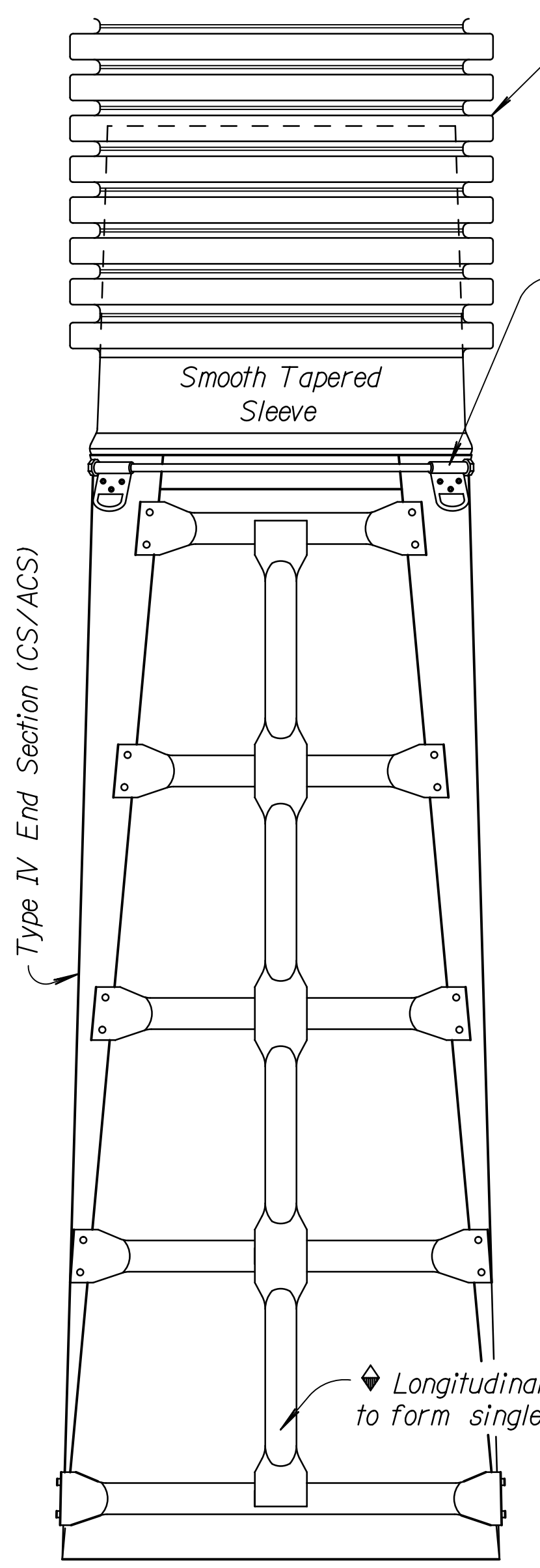
Multiple panel end sections shall have lap seams which are to be tightly joined by bolts & nuts. Corner plate and toe plate to be same gauge and material as end section. When required optional toe plate extension shall be overall width less 6" x 8" high.

Safety bars shall be fabricated from steel pipe meeting the requirements of ASTM A-53 Schedule 40 Specifications. Safety bars shall be hot dipped galvanized after fabrication.

Attachment to PE pipe shall be made with Smooth Tapered Sleeve.

All work and materials required for construction and installation of safety slope end section shall be included in the bid item "End Section (Type IV)".

| Pipe Dia. (In.) | Min. Gauge Ends | Dimensions + or - 2" | | | | L Dimensions + or - 2" | | | |
|-----------------|-----------------|----------------------|----|----|---------------|------------------------|--------------|-------|--------------|
| | | A | H | W | Overall Width | Slope | Length (In.) | Slope | Length (In.) |
| 30" | 12 | 12 | 9 | 36 | 60 | 4:1 | 80 | 6:1 | 120 |
| 36" | 12 | 12 | 9 | 42 | 66 | 4:1 | 104 | 6:1 | 156 |
| 42" | 12 | 16 | 12 | 48 | 80 | 4:1 | 128 | 6:1 | 192 |
| 48" | 12 | 16 | 12 | 54 | 86 | 4:1 | 152 | 6:1 | 228 |
| 54" | 12 | 16 | 12 | 60 | 92 | 4:1 | 176 | 6:1 | 264 |
| 60" | 12 | 16 | 12 | 66 | 98 | 4:1 | 200 | 6:1 | 300 |



Drawn By: djb_xm Plotted: 8/26/2010 File: I:\2005\05789\Standards\05789-rd667a.dgn

TYPE 2 CONNECTOR DETAILS
(For 30" and larger pipe)

DETAIL OF SAFETY BAR
(Optional)

DETAILS OF CORRUGATED PE PIPE

PEP SPLIT BAND COUPLER SOIL TIGHT JOINT
This band is used for (Field Splice Construction Joint)

PEP BELL & SPIGOT CONNECTION SOIL TIGHT JOINT

| NO. | DATE | REVISIONS | BY | APP'D |
|-----|--------|--------------------------------|--------|--------|
| 1 | 2-8-08 | Added ref. to KDOT pipe policy | S.W.K. | J.O.B. |

KANSAS DEPARTMENT OF TRANSPORTATION

TYPE IV END SECTION FOR PE PIPE

RD667 A

| | | | |
|------------|------------|------------|-----------------|
| DESIGNED | 6-27-08 | APP'D. | James O. Brewer |
| DESIGN CK. | DETAIL CK. | QUANTITIES | QUAN. CK. |
| | | TRACED | Bowser |
| | | TRACE CK. | King |