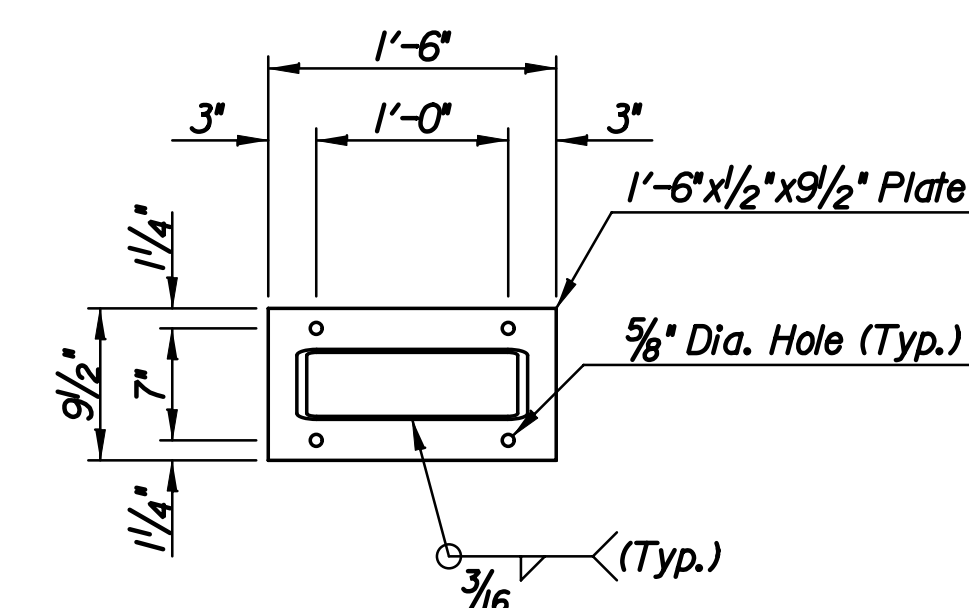
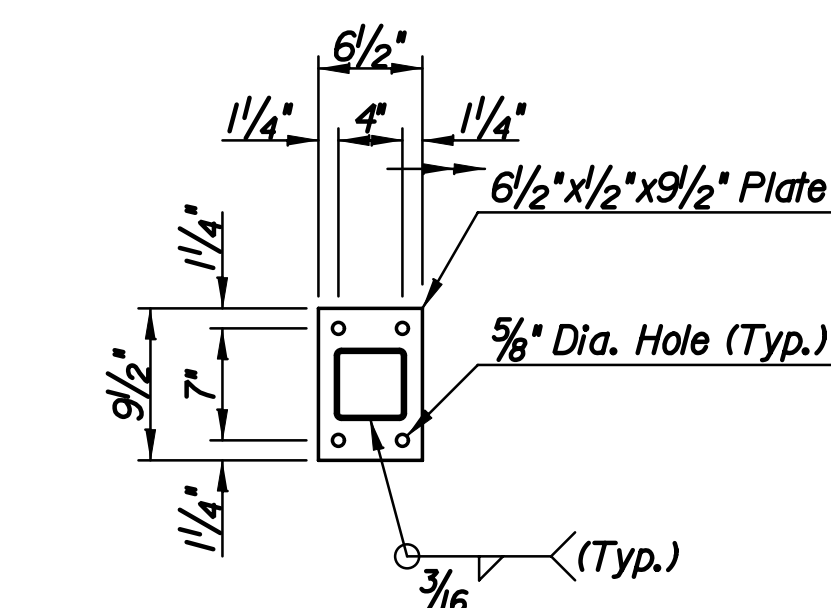
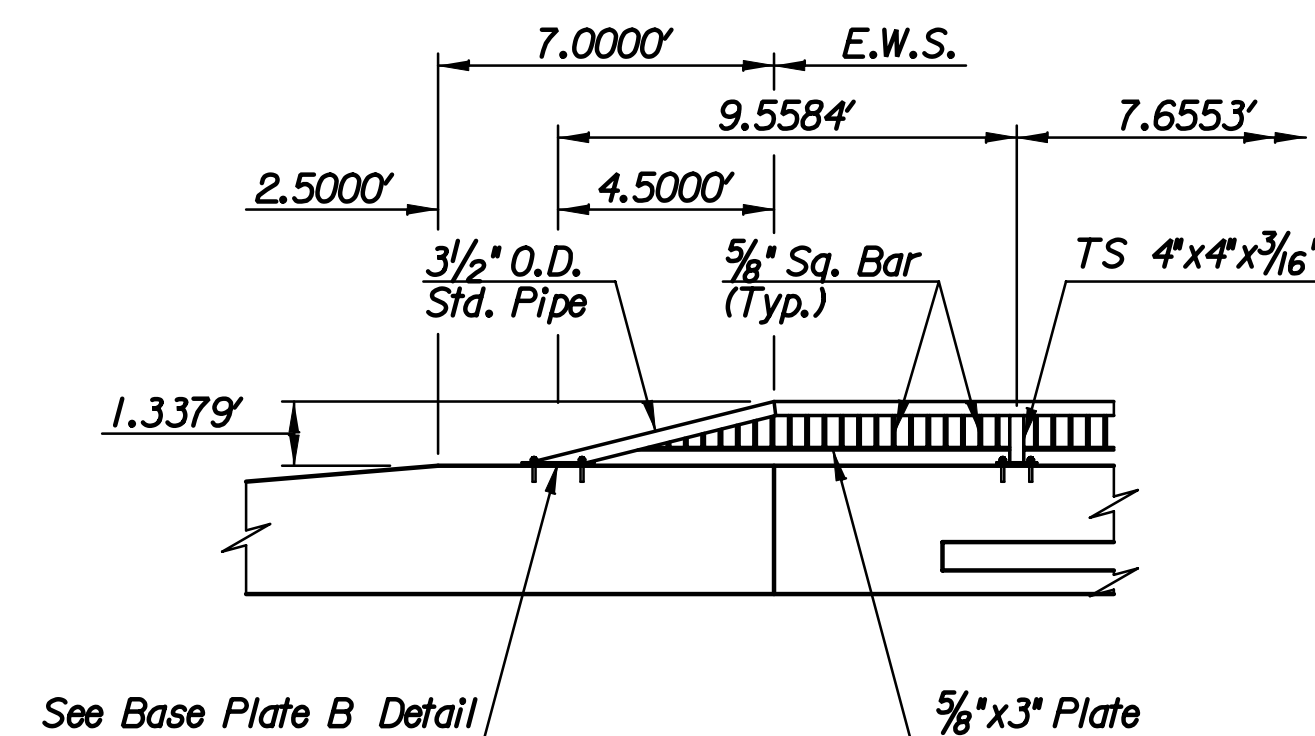
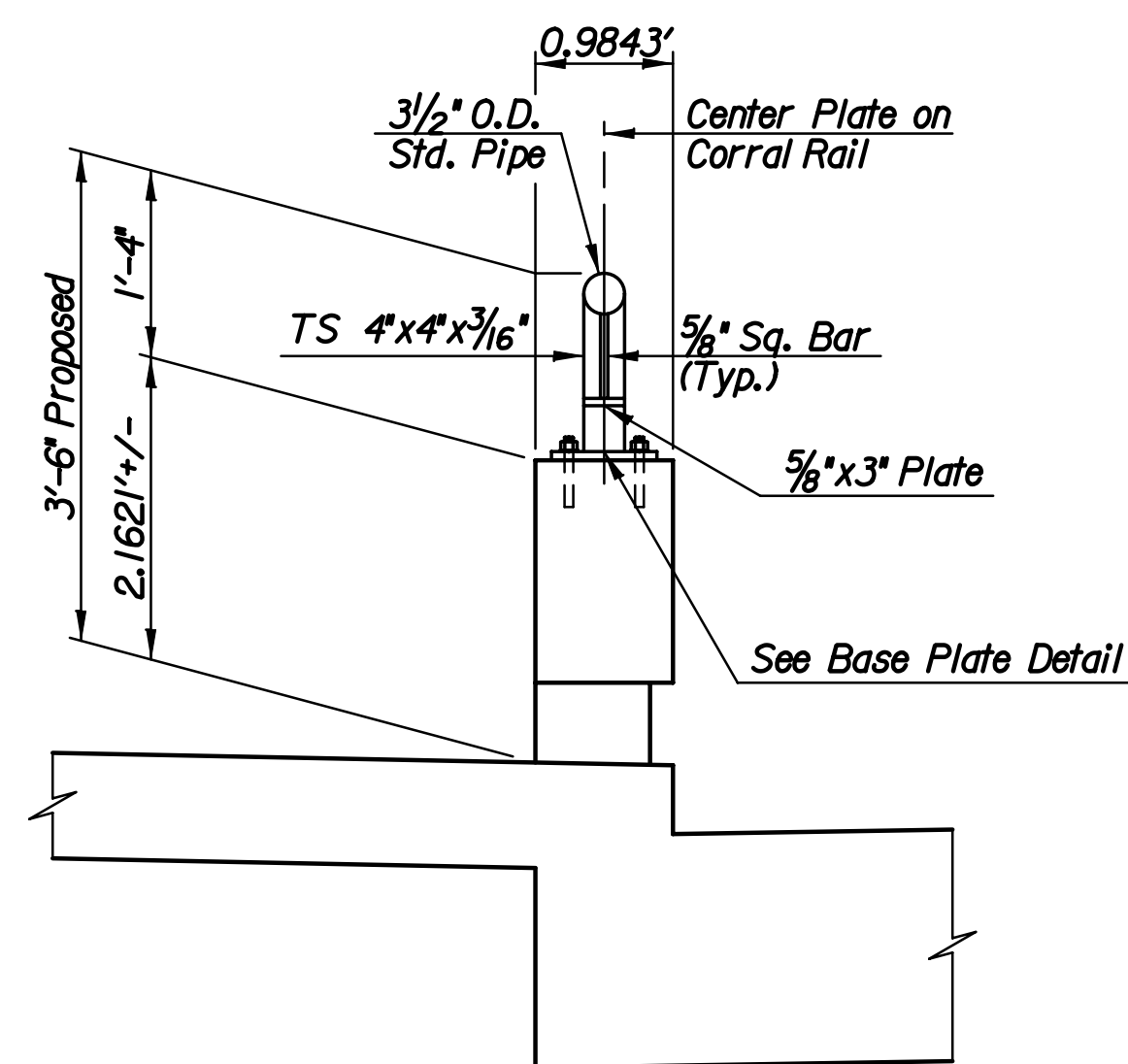
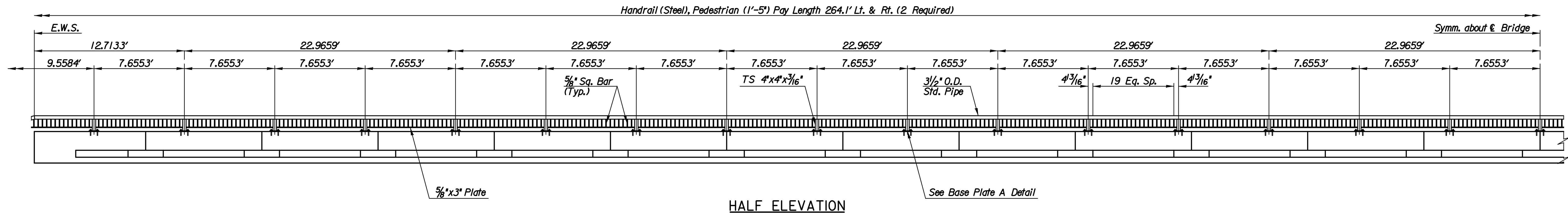


STATE	PROJECT NO.	YEAR	SHEET NO.	TOTAL SHEETS
KANSAS	472-84850	2010	68	152



SECTION THRU RAIL

END PANEL ELEVATION

BASE PLATE A DETAIL
(33 Required)

BASE PLATE B DETAIL
(2 Required)

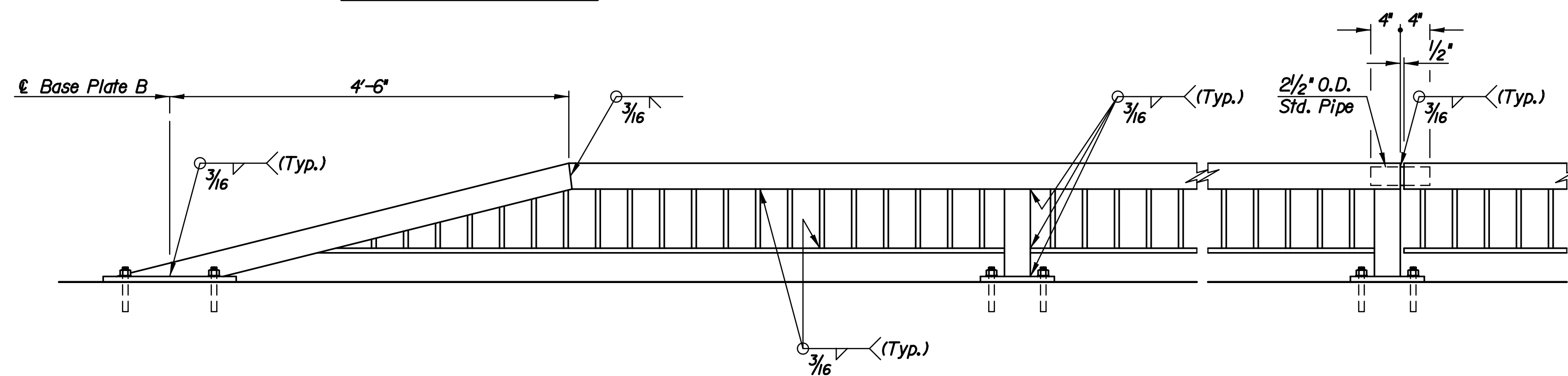
NOTES

The plate and bar rail members shall conform to ASTM A36. The tubular rail members shall conform to ASTM A500 Gr. B.

The rail shall be fabricated in lengths to include a minimum of two and a maximum of three panels. Shims may be used between concrete and base plates of posts. All parts of the steel pedestrian handrail shall be galvanized and painted after fabrication. Galvanizing shall be to the requirements of the latest edition of ASTM A123. The finish coat of paint shall be Tnemec vinyl coat, the color shall be BLACK and applied per the manufacturer's recommendation. Surface preparation shall be in accordance with that for structural steel per KDOT Standard Specifications.

The Rail shall be attached with 1/2"x5/2" Hilti Kwik Bolt 3 Hot Dip Galvanized Expansion Anchor or equal as approved by the Engineer.

All material, equipment and labor necessary for the installation of the bridge handrail shall be subsidiary to the bid item.



WELD LOCATIONS

RAIL SPLICE DETAIL

Drawing Name: i:/2005/05789/details/119th Rail.dgn
Plotted By: wll 7-19-2010

Revisions		By	Date
119TH STREET			
RAIL DETAILS			
JAMES L. ARMOUR, P.E. - CITY ENGINEER CITY OF WICHITA PROJECT NO. 472-84850			
Professional Engineering Consultants, P.A. 303 S. TOPEKA • WICHITA, KANSAS 67202 316-262-2691 • FAX 316-262-3003			
Designed by	R.A.S.	Checked by	R.A.S.
Drawn by	W.L.L.	Date	August 2010
		Job No.	05789