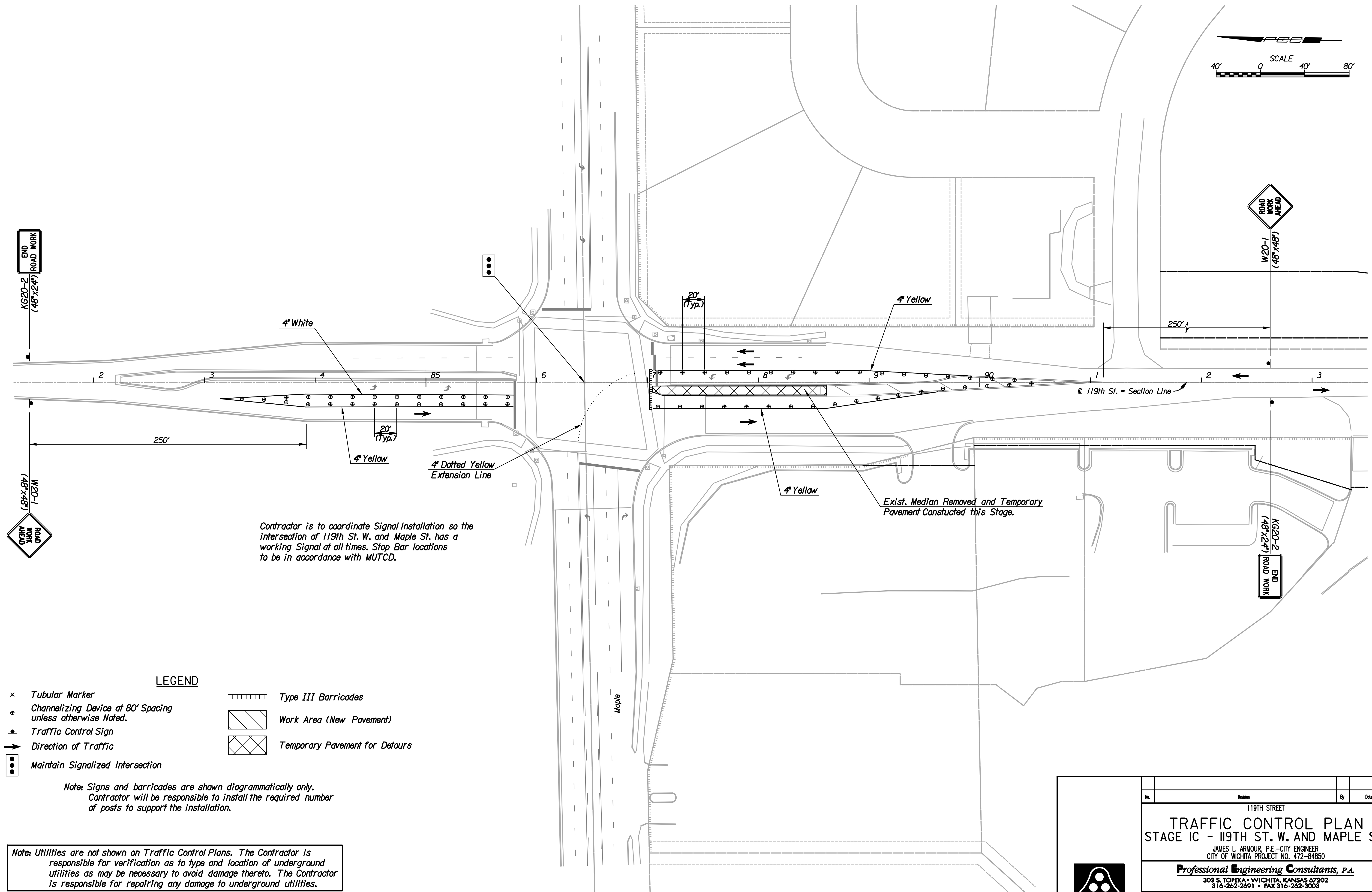
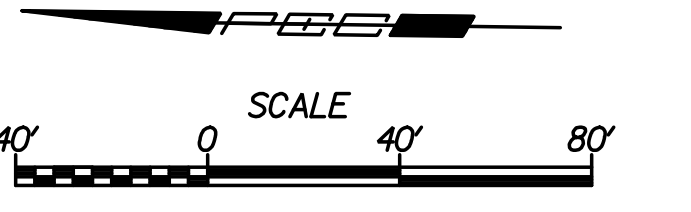


Plotted By: svb Date: 9/7/2010 9:50:49 AM  
 FILE: I:\2005\05789\Traffic\05789-StageIC-Maple.dgn



Contractor is to coordinate Signal Installation so the intersection of 119th St. W. and Maple St. has a working Signal at all times. Stop Bar locations to be in accordance with MUTCD.

Exist. Median Removed and Temporary Pavement Constructed this Stage.

**LEGEND**

- × Tubular Marker
- ⊙ Channelizing Device at 80' Spacing unless otherwise Noted.
- Traffic Control Sign
- Direction of Traffic
- ⋯ Maintain Signalized Intersection
- ▤ Type III Barricades
- ▨ Work Area (New Pavement)
- ▩ Temporary Pavement for Detours

Note: Signs and barricades are shown diagrammatically only. Contractor will be responsible to install the required number of posts to support the installation.

Note: Utilities are not shown on Traffic Control Plans. The Contractor is responsible for verification as to type and location of underground utilities as may be necessary to avoid damage thereto. The Contractor is responsible for repairing any damage to underground utilities.

Revision		By	Date
119TH STREET			
<b>TRAFFIC CONTROL PLAN</b>			
<b>STAGE IC - 119TH ST. W. AND MAPLE ST.</b>			
JAMES L. ARMOUR, P.E. - CITY ENGINEER CITY OF WICHITA PROJECT NO. 472-84850			
<b>Professional Engineering Consultants, P.A.</b> 303 S. TOPEKA - WICHITA, KANSAS 67202 316-262-2691 • FAX 316-262-3003			
Designed by	CKC	Job No.	05789
Drawn by	DRP	Date	August 2010
			Sht. 95 of 152