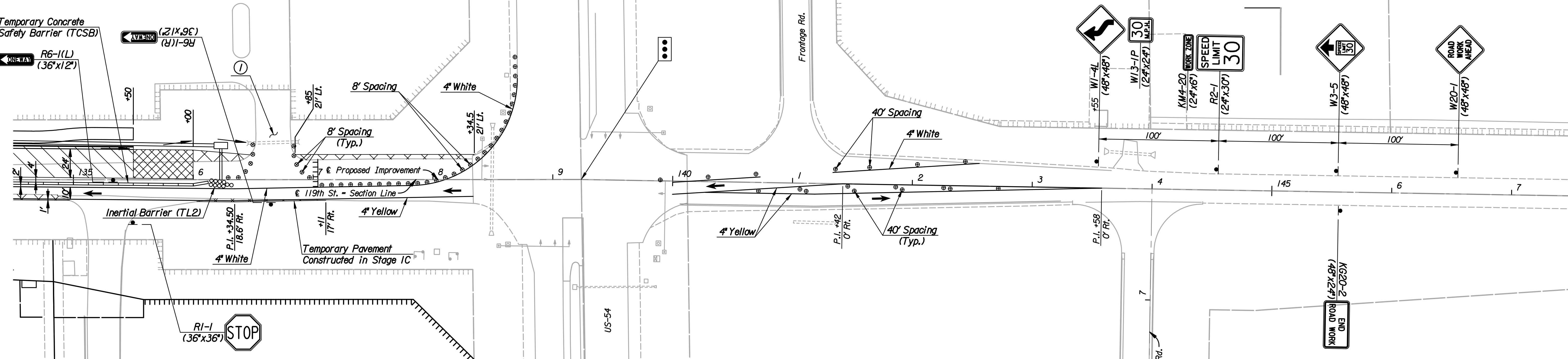


Funeral Procession Contact:  
Le Roy Steine, Superintendent Resthaven  
Cell: 316-648-9663

Temporary Concrete  
Safety Barrier (TCSB)

R6-1(L)  
(36"x12")

R6-1(R)  
(36"x12")



**LEGEND**

- × Tubular Marker
- ⊙ Channelizing Device at 80' Spacing unless otherwise Noted.
- ▲ Traffic Control Sign
- Direction of Traffic
- ⊞ Maintain Signalized Intersection
- ▤ Type III Barricades
- ▨ Work Area (New Pavement)
- ▧ Temporary Pavement for Detours
- ▩ Temporary Bituminous Pavement to ramp from New Pavement to Exist. Pavement
- ▬ Temporary Concrete Safety Barrier

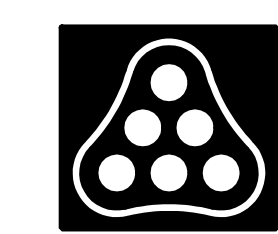
Note: Signs and barricades are shown diagrammatically only. Contractor will be responsible to install the required number of posts to support the installation.

① Provide temporary all weather access to entrance at all times during construction.

Note: Utilities are not shown on Traffic Control Plans. The Contractor is responsible for verification as to type and location of underground utilities as may be necessary to avoid damage thereto. The Contractor is responsible for repairing any damage to underground utilities.

Contractor is to coordinate Signal Installation so the intersection of 119th St. W. and US-54 has a working Signal at all times. Stop Bar locations to be in accordance with MUTCD.

Plotted By: svb Date: 9/7/2010 9:57:38 AM  
 FILE: I:\2005\05789\Traffic\05789-Stage2-135.dgn



|   |     |         |                 |
|---|-----|---------|-----------------|
| Revision  |     | By      | Date            |
| 119TH STREET  |     |         |                 |
| <b>TRAFFIC CONTROL PLAN</b>   |     |         |                 |
| STAGE 2 - STA. 135+00 TO STA. 139+24.75   |     |         |                 |
| JAMES L. ARMOUR, P.E. - CITY ENGINEER<br>CITY OF WICHITA PROJECT NO. 472-84850  |     |         |                 |
| <b>Professional Engineering Consultants, P.A.</b><br>303 S. TOPEKA - WICHITA, KANSAS 67202<br>316-262-2691 • FAX 316-262-3003 |     |         |                 |
| Designed by   | CKC | Job No. | 05789           |
| Drawn by  | DRP | Date    | August 2010     |
|   |     |         | Sht. 100 of 152 |