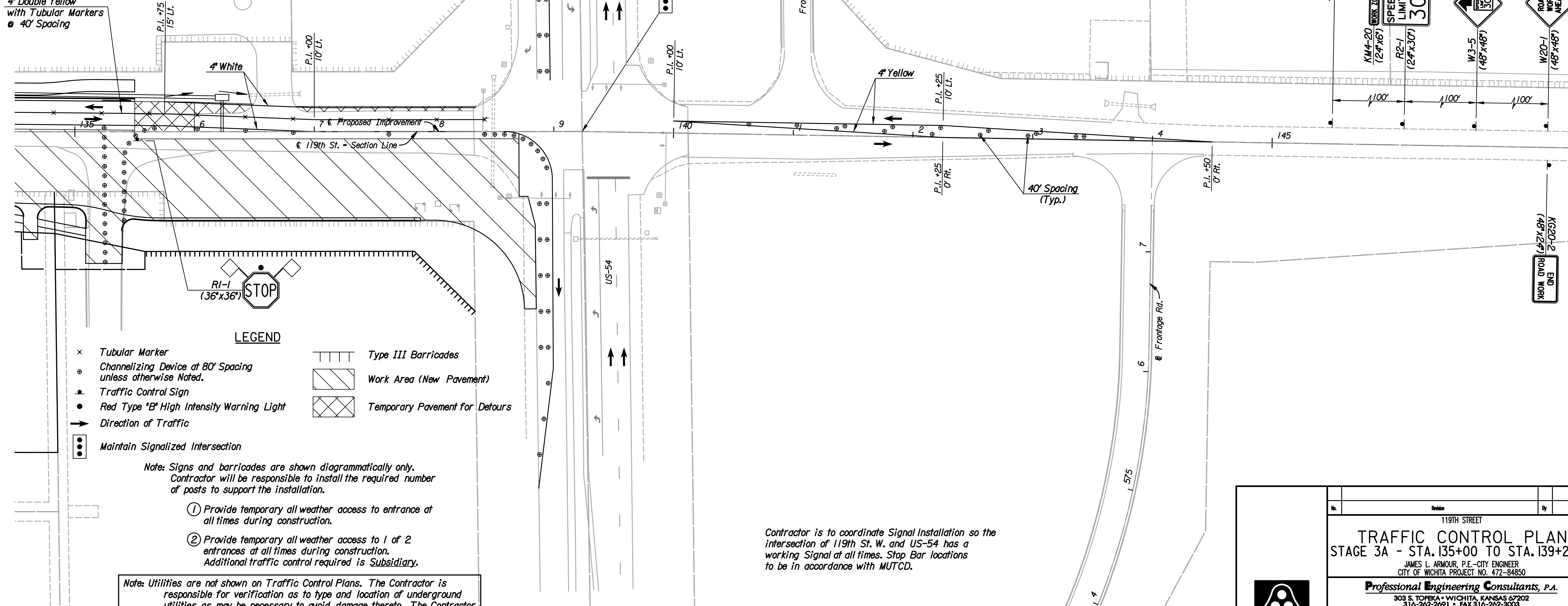


Funeral Procession Contact:
Le Roy Steine, Superintendent Resthaven
Cell: 316-648-9663

4" Double Yellow
with Tubular Markers
• 40' Spacing



LEGEND

- × Tubular Marker
- Channelizing Device at 80' Spacing unless otherwise Noted.
- Traffic Control Sign
- Red Type "B" High Intensity Warning Light
- Direction of Traffic
- Maintain Signalized Intersection
- ||||| Type III Barricades
- ▨ Work Area (New Pavement)
- ▤ Temporary Pavement for Detours

Note: Signs and barricades are shown diagrammatically only. Contractor will be responsible to install the required number of posts to support the installation.

- ① Provide temporary all weather access to entrance at all times during construction.
- ② Provide temporary all weather access to 1 of 2 entrances at all times during construction. Additional traffic control required is Subsidiary.

Note: Utilities are not shown on Traffic Control Plans. The Contractor is responsible for verification as to type and location of underground utilities as may be necessary to avoid damage thereto. The Contractor is responsible for repairing any damage to underground utilities.

Contractor is to coordinate Signal Installation so the intersection of 119th St. W. and US-54 has a working Signal at all times. Stop Bar locations to be in accordance with MUTCD.

Plotted By: svb Date: 9/7/2010 10:01:48 AM
 FILE: I:\2005\05789\Traffic\05789-Stage3-135.dgn

Revision		By	Date
119TH STREET			
TRAFFIC CONTROL PLAN			
STAGE 3A - STA. 135+00 TO STA. 139+24.75			
JAMES L. ARMOUR, P.E. - CITY ENGINEER CITY OF WICHITA PROJECT NO. 472-84850			
Professional Engineering Consultants, P.A. 303 S. TOPEKA - WICHITA, KANSAS 67202 316-262-2691 • FAX 316-262-3003			
Designed by	CKC	Job No.	05789
Drawn by	DRP	Date	August 2010
			Sht. 104 of 152