

PLAN
 CHECKED
 BY
 DATE

PROFILE
 CHECKED
 BY
 DATE

Printed: 08-26-2010 11:03:00 AM by TDS
 PLOT: 08-26-2010 08:24 AM
 C:\2005\05789\WATERLINE NO. 1.dwg
 by: JED D. SCHEPPE

N: 1,682,283.4446, E: 1,607,468.3016
 @ 119th St., Sta. 91+09.85, 46' R/L=
 WL 1, Sta. 0+00.00
 Existing 16" Water Main *
 1- 16" x 8" Tapping Sleeve
 1- 8" Tapping Valve
 1- 6" Valve Box
 (To be furnished and set by
 City of Wichita Water Dept.)
 Top Valve Box El.=1320.88

The Contractor may either directional drill, using
 Certa-Lok RJ PVC Pipe or approved equal, or install
 steel casing pipe by boring methods for the waterline
 crossing of 119th Street, at his option.
 Easements/Rights-of-Ways that the Contractor can
 use are shown on the plans. The Contractor will be
 responsible for acquisition of any additional
 easements required, depending on the installation
 methods. All costs for this item shall be included in
 the price bid for "B" Pipe by Directional Drill,
 regardless of the method of pipe installation.

Note: The Contractor shall maintain traffic at all
 times during construction of the 8" water main.

N: 1,682,283.6634, E: 1,607,484.3001
 WL 1, Sta. 0+16.00 to
 N: 1,682,284.5386, E: 1,607,548.2941
 WL 1, Sta. 0+80.00
 Install 64.0 L.F. 8" C900 RJ PVC
 Pipe by directional drilling.*

CAUTION !!!
 Existing 4" San. Sew. FM (Abandoned)
 CAUTION !!!
 Gas Line (KGS)
 CAUTION !!!
 Buried Telephone (AT&T)

CAUTION!!!
 Power Pole (Westar Energy)
 Contractor to restrain pole in
 place thru construction. At
 least 72 hours prior to
 start of construction, coordinate
 restraint with Westar Energy,
 Mr. Randy Truitt at 261-8512.

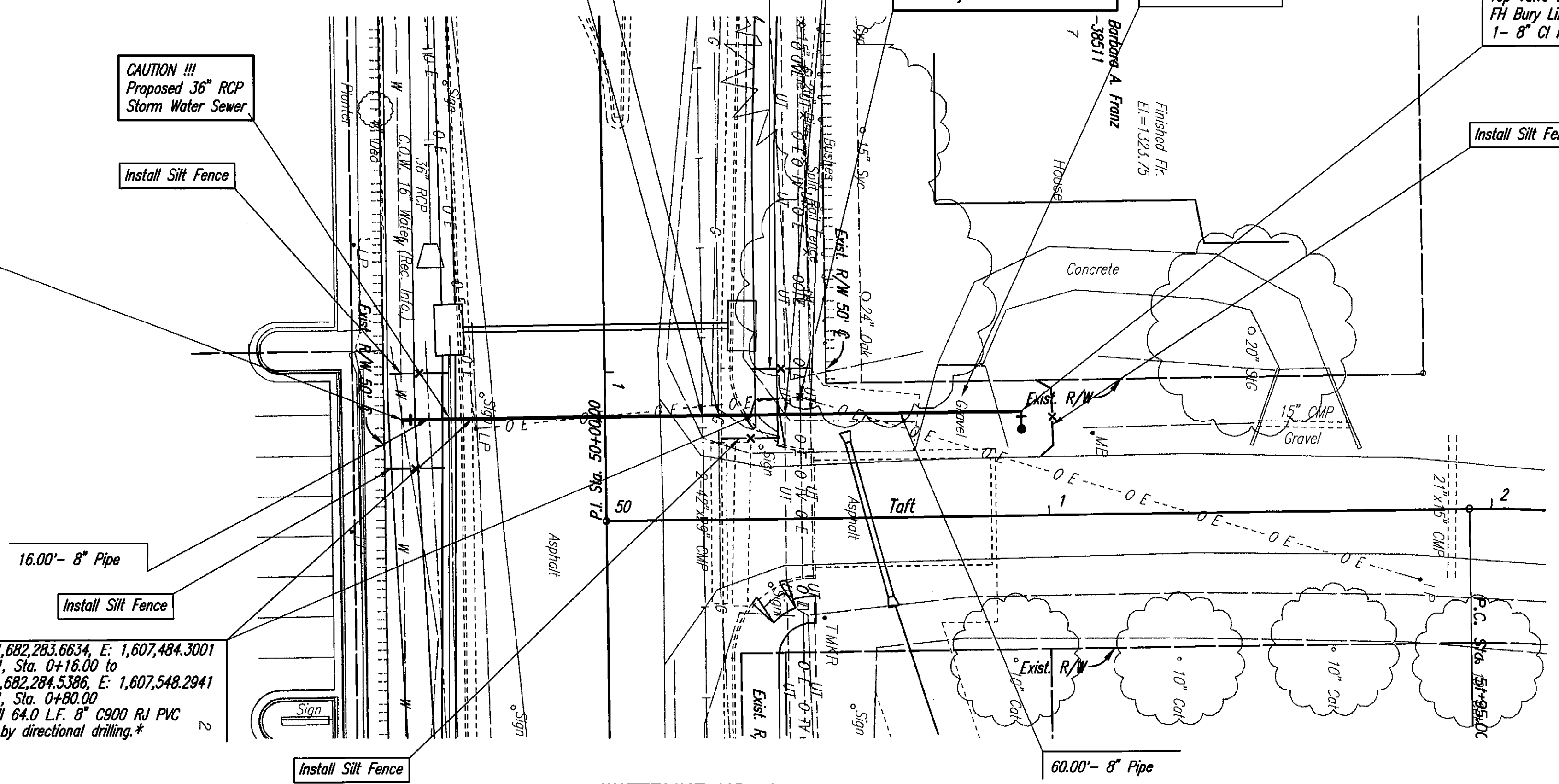
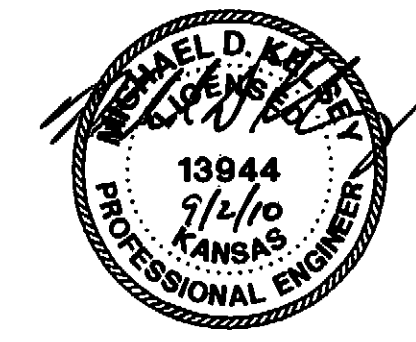
Remove and replace
 17 L.F. Gravel drive
 in kind.

N: 1,682,285.3592, E: 1,607,608.2885
 @ Taft, Sta. 50+94.00, 23.24' Lt.=
 WL 1, Sta. 1+40.00
 1- Fire Hydrant Assembly
 L= 4'
 Top Valve Box El.=1320.4
 FH Bury Line El.= 1320.3
 1- 8" CI MJ Plug (E)

SCALE:
 PLAN: LAT. & LONG. 0 20 40
 PROFILE: HORIZ. SAME AS ABOVE
 VERT. 0 5

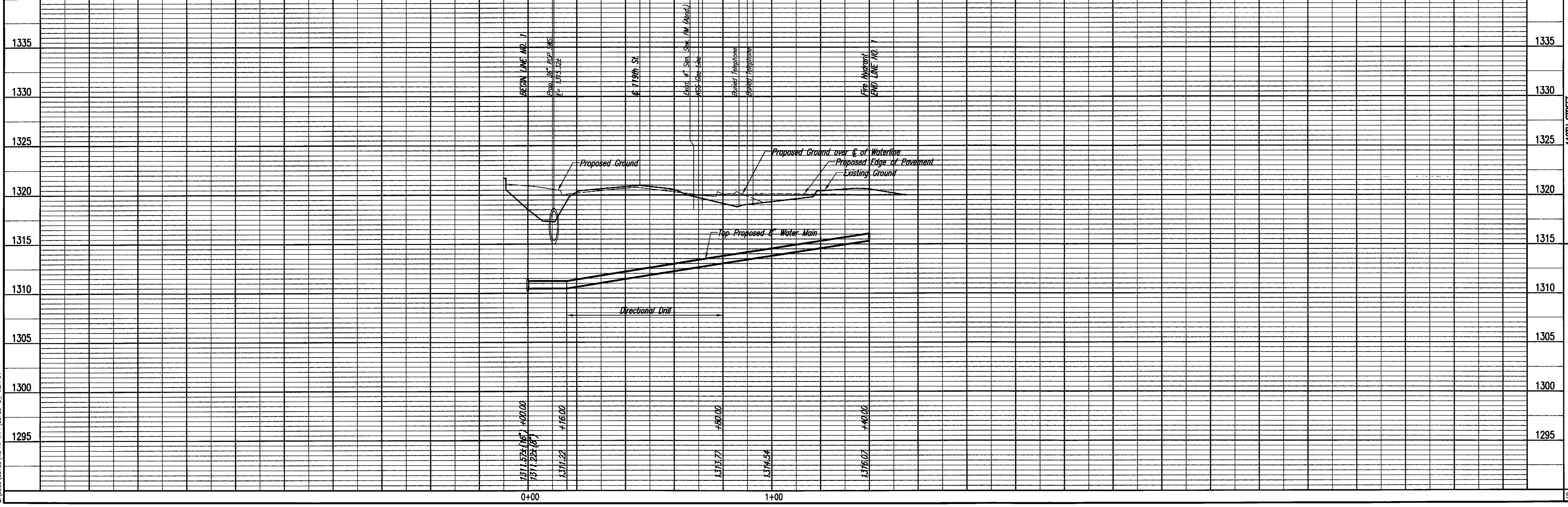
- NOTES:
- ALL WATER MAINS AND APPURTENANCES SHALL BE INSTALLED IN ACCORDANCE WITH CITY OF WICHITA, KANSAS STANDARD SPECIFICATIONS.
 - OPENING AND CLOSING WATER VALVES SHALL BE DONE SLOWLY TO PREVENT DAMAGE TO THE WATER DISTRIBUTION SYSTEM FROM WATER HAMMER. ALL VALVES CLOSED BY THE CONTRACTOR MUST BE REOPENED AS NEW CONSTRUCTION PERMITS. PROJECT INSPECTOR MUST ASCERTAIN THAT ANY VALVE CLOSED BY THE CONTRACTOR IS REOPENED. CONTRACTOR WILL BE PERMITTED TO OPERATE WATER VALVES ONLY WHEN THE PROJECT INSPECTOR ASSIGNED TO THE PROJECT IS PRESENT.
 - THE CONTRACTOR SHALL NOT START WORK ON THE PROJECT UNTIL THE PROJECT INSPECTOR IS ASSIGNED TO THE PROJECT AND IS PRESENT ON THE SITE. ANY WORK DONE WITHOUT INSPECTION WILL BE REQUIRED TO BE UNCOVERED FOR INSPECTION.
 - NO SERVICES WILL BE INSTALLED AS PART OF THIS PROJECT.

* PRIOR TO BEGINNING CONSTRUCTION, THE CONTRACTOR SHALL EXCAVATE THE EXISTING 16" WATERLINE AT STATION 0+00.00 TO VERIFY PIPE SIZE, TYPE, FITTINGS, AND HORIZONTAL AND VERTICAL LOCATION. THE CONTRACTOR SHALL REPORT HIS FINDINGS TO THE ENGINEER SO THAT ANY NECESSARY PLAN MODIFICATIONS CAN BE MADE. ANY ADDITIONAL LABOR OR MATERIALS NECESSARY TO COMPLETE THE CONNECTION SHALL BE CONSIDERED SUBSIDIARY TO THE PROJECT.



WATERLINE NO. 1

Unless noted otherwise, elevations shown are top of pipe



119TH STREET
 WATERLINE NO. 1

Professional Engineering Consultants, P.A.
 303 S. TOPEKA • WICHITA, KANSAS 67202
 316-262-2691 • FAX 316-262-3003

Designed By: MOK
 Drawn By: TDS
 Job No. 35-05789-042
 Date August 2010

JAMES L. ARMOUR, P.E. - CITY ENGINEER
 CITY OF WICHITA PROJECT NO. 448-90493

Sheet 119 of 152