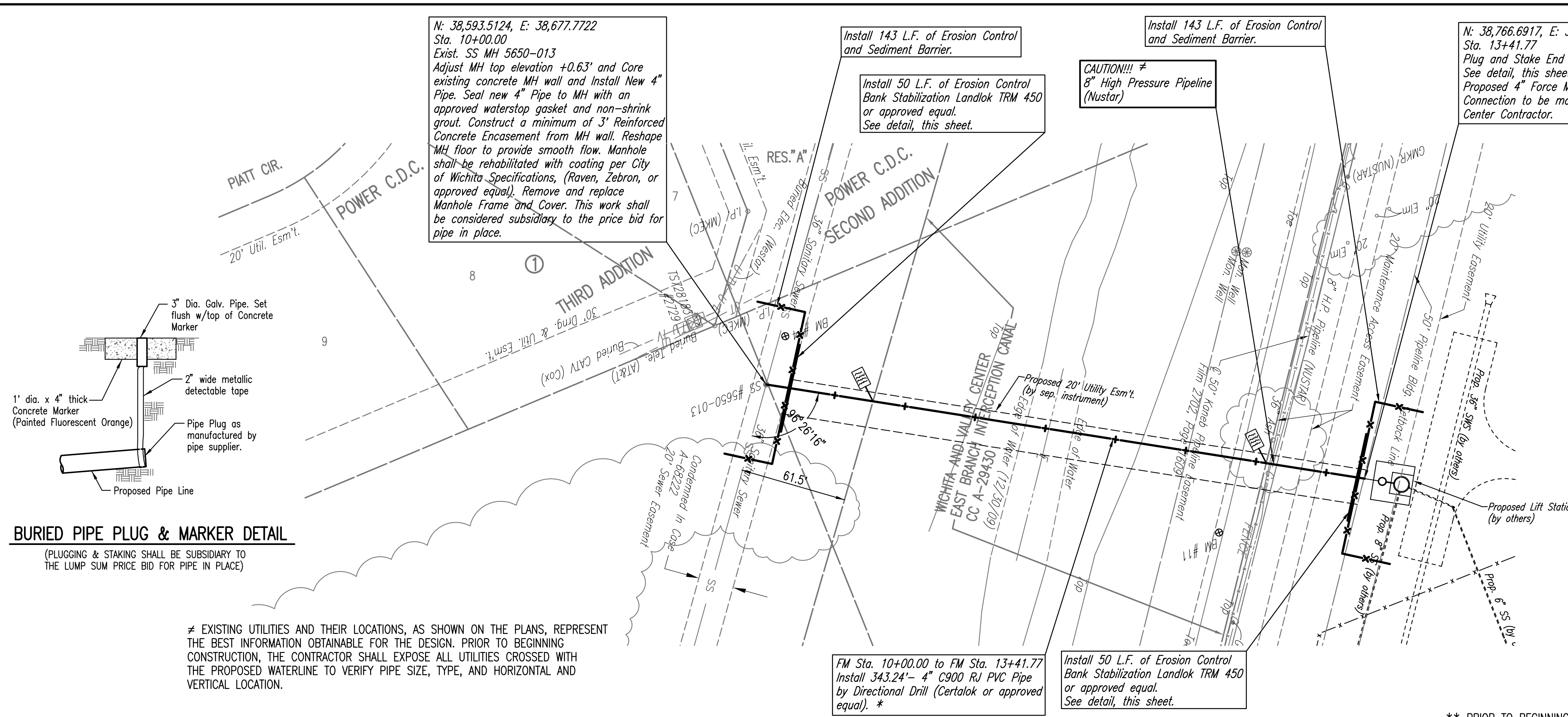


PLAN	CHECKED	DATE
	CHECKED	

PROFILE	CHECKED	DATE
	CHECKED	

Saved: 06-29-2010 4:59:44 PM by: JLM
 Plot Scale: 1:40 07-01-2010 10:38:13 AM by: JLM
 C:\2009\09307\000\SS\09307-C-SSP01



BURIED PIPE PLUG & MARKER DETAIL
 (PLUGGING & STAKING SHALL BE SUBSIDIARY TO THE LUMP SUM PRICE BID FOR PIPE IN PLACE)

Unless noted otherwise, elevations shown are top of pipe

≠ EXISTING UTILITIES AND THEIR LOCATIONS, AS SHOWN ON THE PLANS, REPRESENT THE BEST INFORMATION OBTAINABLE FOR THE DESIGN. PRIOR TO BEGINNING CONSTRUCTION, THE CONTRACTOR SHALL EXPOSE ALL UTILITIES CROSSED WITH THE PROPOSED WATERLINE TO VERIFY PIPE SIZE, TYPE, AND HORIZONTAL AND VERTICAL LOCATION.

* CONTRACTOR MAY INSTALL UP TO 20' OF PIPE, ON EACH END OF THE FORCE MAIN, BY OPEN CUT. ANY FORCE MAIN INSTALLED BY OPEN CUT WILL BE PAID FOR AT THE UNIT PRICE BID FOR "4\"/>

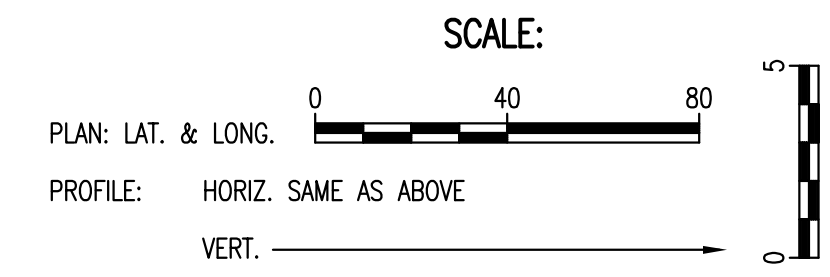
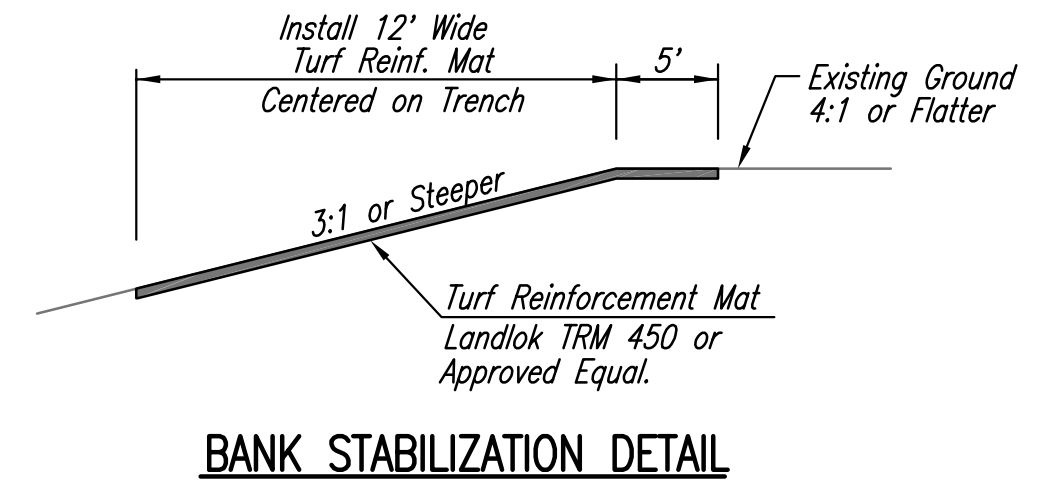
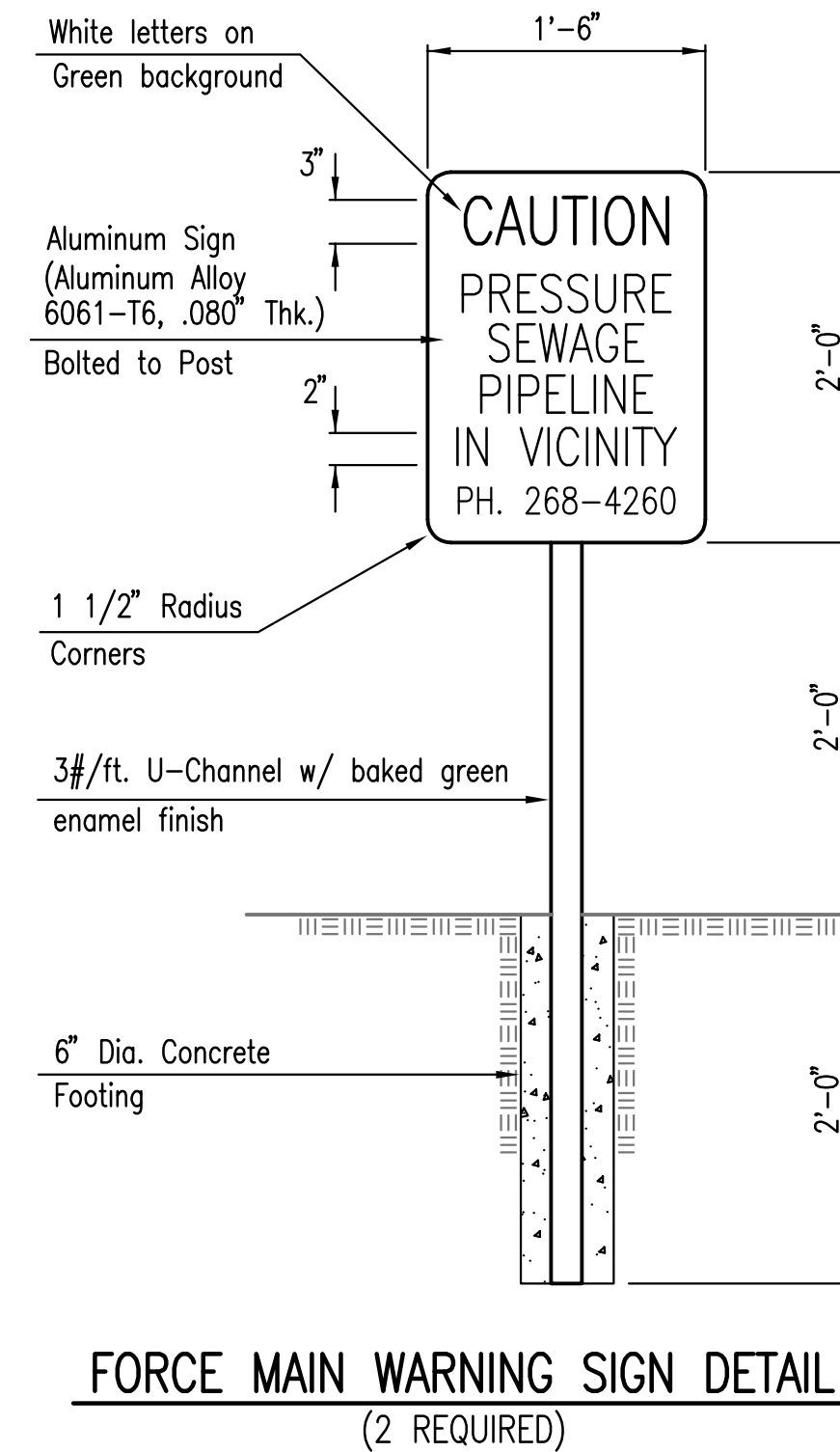
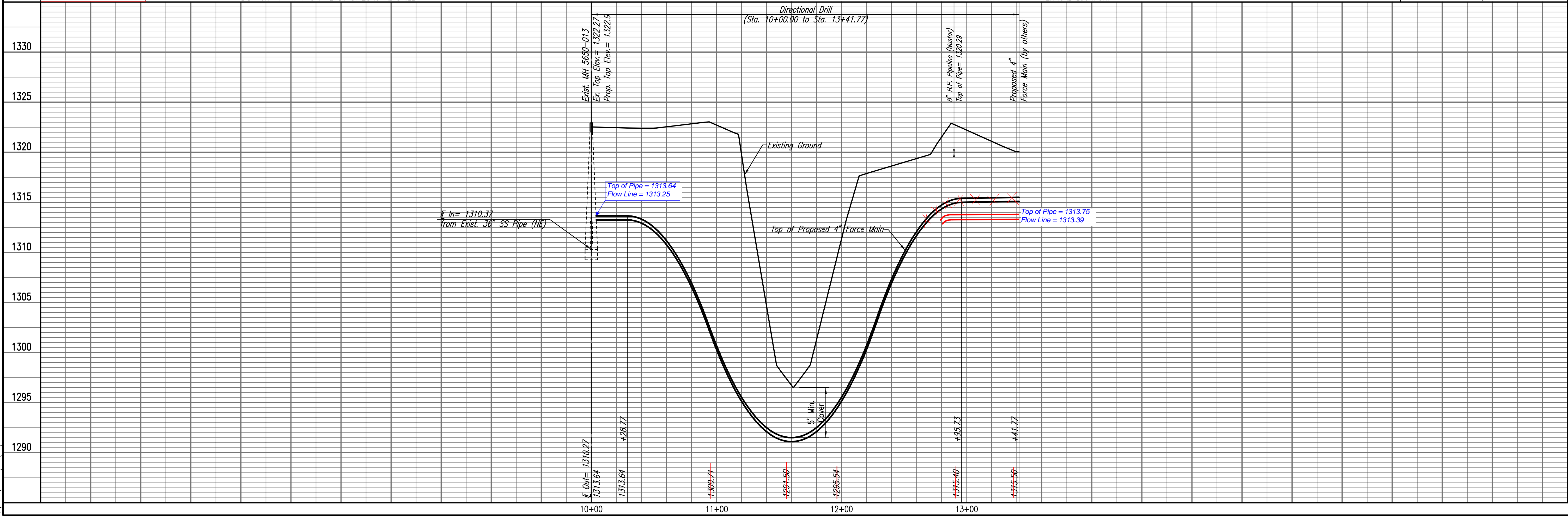
FM Sta. 10+00.00 to FM Sta. 13+41.77
 Install 343.24' - 4" C900 RJ PVC Pipe by Directional Drill (Certalok or approved equal). *

Install 50 L.F. of Erosion Control Bank Stabilization Landlok TRM 450 or approved equal. See detail, this sheet.

** PRIOR TO BEGINNING CONSTRUCTION, THE CONTRACTOR SHALL CONTACT COOK, FLATT, STROBEL ENGINEERING, P.A. (TOPEKA OFFICE), MR. KEVIN BECK, AT (785) 272-4706 TO VERIFY PIPE SIZE, TYPE, AND HORIZONTAL AND VERTICAL LOCATION.

DESIGNATES LOCATION OF FORCE MAIN WARNING SIGN. (2 required this sheet) REF. DETAIL, THIS SHEET

FORCE MAIN LINE NO. 1



HEARTLAND PREPAREDNESS CENTER
 LATERAL 127, SS #23
FORCE MAIN LINE NO. 1
 JAMES L. ARMOUR, P.E. - CITY ENGINEER
 CITY OF WICHITA PROJECT NO. 468-84675

Professional Engineering Consultants, P.A.
 803 S. TOPEKA AVENUE, SUITE 200, WICHITA, KANSAS 67202
 316-262-2691 • FAX 316-262-3003

MDK
 JLM
 Job No. 35-09307-259
 Date January 2010