

PRIVATE FIRE PROTECTION LINE JACKSON ELEMENTARY SCHOOL LOT 1, BLOCK 1, NORTHEAST ELEMENTARY SCHOOL ADDITION PROJECT NUMBER 1529 PPW (607853)

INDEX OF SHEETS

- (CITY SUBMITTAL INDEX)
1. TITLE SHEET
 2. WATER PLAN & PROFILE
 3. WATER ASSEMBLY DETAILS

BENCHMARKS

BENCH MARK #1: BRASS DISK ON THE TOP OF CURB, SOUTH OF THE WEST CURB INLET ON THE ELEMENTARY SCHOOL DRIVE, 700' S. OF THE CENTERLINE OF 29TH STREET NORTH AND 489' W. OF THE CENTERLINE OF WOODLAWN
ELEVATION = 1375.71 (NAVD88)

BENCH MARK #2: RR SPIKE IN THE NE FACE OF HLP AT THE SW CORNER OF 29TH STREET NORTH AND WOODLAWN
ELEVATION = 1365.23 (NAVD88)

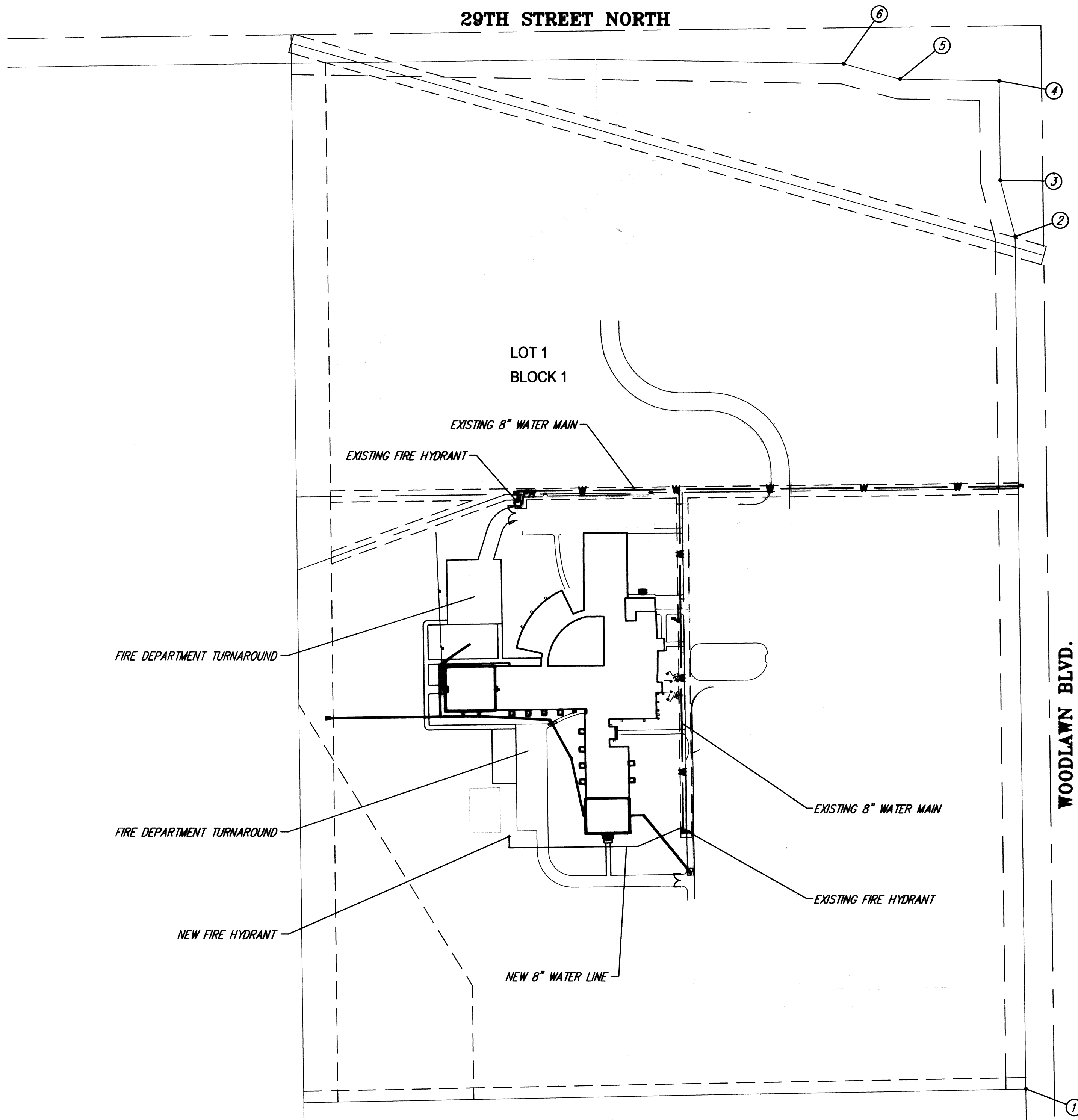
GENERAL NOTES

1. Contractor will be required to provide a minimum notice of 72 hours to utility companies prior to starting any excavation as follows:

Kansas One-Call	687-2470
-----------------	----------

The Contractor must notify the following in case of an emergency:

Cox Communications	262-0661
Kansas Gas Service	383-8600
Westar Energy	383-8600
AT&T	1-800-286-8313
City of Wichita Water Utility	268-6000
2. All water mains and appurtenances shall be installed in accordance with City of Wichita, Kansas, Standard Specifications for the Construction of City Projects, and current policy on construction of infrastructure by private contract.
3. Opening and closing water valves shall be done slowly to prevent damage to the water distribution system from water hammer. All valves closed by the Contractor must be reopened as new construction permits. Project inspector must ascertain that any valve closed by the Contractor is reopened. Contractor will be permitted to operate water valves only when the project inspector assigned to the project is present.
4. The Contractor shall give all property owners and/or tenants of developed property directly abutting the construction of this project a minimum of ten (10) days advance notice prior to start of construction.
5. The Contractor shall be responsible for preserving property irons. The Contractor will be required to re-establish any property irons which are damaged or destroyed by his construction operations. Such irons shall be re-established by a licensed land surveyor in accordance with state laws.
6. The Contractor shall reimburse the Wichita Water Utilities for cost of tap and materials. At Contractor's option, and coordination of shutdown of existing 8" main with USD 259 and WFD, an 8"x8" Tee may be cut-in in lieu of tapping.
7. No work shall be done on this project until the project inspector has been notified.
8. Traffic will not be affected by this project.



**APPROVED AS NOTED
BY CITY ENGINEER OF WICHITA
BY WICHITA FIRE DEPARTMENT
BY WICHITA WATER UTILITY**

Public Works: 5/18/10

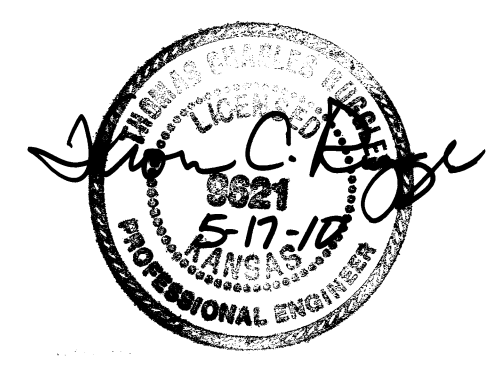
Water & Sewer: Tom Staves

Fire Prot. Line: WFD

NOTE TO CONTRACTORS

Public Property:
Inspection and testing for the waterline is to be provided by a Licensed Consulting Engineering Firm under contract with the Owner/Developer. Said inspection is to be in accordance with the City of Wichita standard construction engineering practices and certified by a Licensed Professional Engineer. No work shall be performed in dedicated easements or public right-of-way by the Contractor without such inspection nor shall any work be commenced without written authorization by the City Engineer. All Construction and Materials shall comply with the City of Wichita Specifications and Standards (as file and available in the City Engineer's Office).

Private Property:
Inspection and testing for the fire protection line is to be performed by a City of Wichita certified fire protection contractor in accordance with the fire codes as adopted by the City of Wichita. All materials and construction practices for the fire protection line shall comply with the fire codes as adopted by the City of Wichita (outside from the City of Wichita Fire Department). The Contractor shall not commence work without notification to and approval of the Wichita Fire Department.



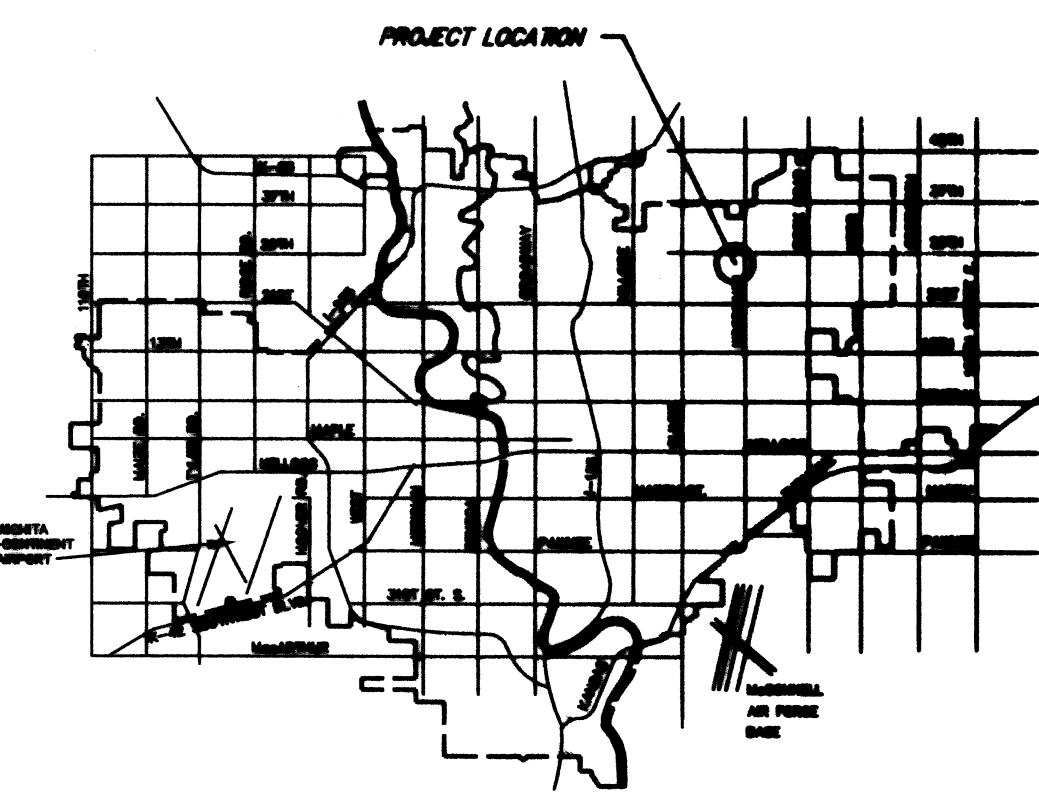
AS BUILT

CONTRACTOR: M. C. Colledge, Etc.

INSPECTOR: Tom Staves

COMPANY: K.E.M. Inc. Engineering

DATE: 10/21/2009



VICINITY MAP

COORDINATE CONTROL TABLE				
CONTROL NO.	LOCATION	DESCRIPTION	NORTHING	EASTING
1	SE CORNER OF LOT 1, BLOCK 1	(MKEC 5/8")	1702999.26	1670398.88
2	RIGHT-OF-WAY CONTROL	(+ CUT)	1704498.57	1670380.00
3	RIGHT-OF-WAY CONTROL	(MKEC 5/8")	1704598.12	1670353.66
4	NE CORNER OF LOT 1, BLOCK 1	(5/8" REBAR)	1704773.15	1670351.42
5	RIGHT-OF-WAY CONTROL	(MKEC 5/8")	1704775.91	1670176.54
6	RIGHT-OF-WAY CONTROL	(MKEC 5/8")	1704802.48	1670076.94

**CITY OF WICHITA, KANSAS
JAMES L. ARMOUR, P.E., CITY ENGINEER**



Ruggles & Bohm, P.A.
Engineering, Surveying, Land Planning

924 North Main (316) 264-8008
Wichita, Kansas 67203 (316) 264-4621 fax
www.rbkansas.com E-mail: info@rbkansas.com