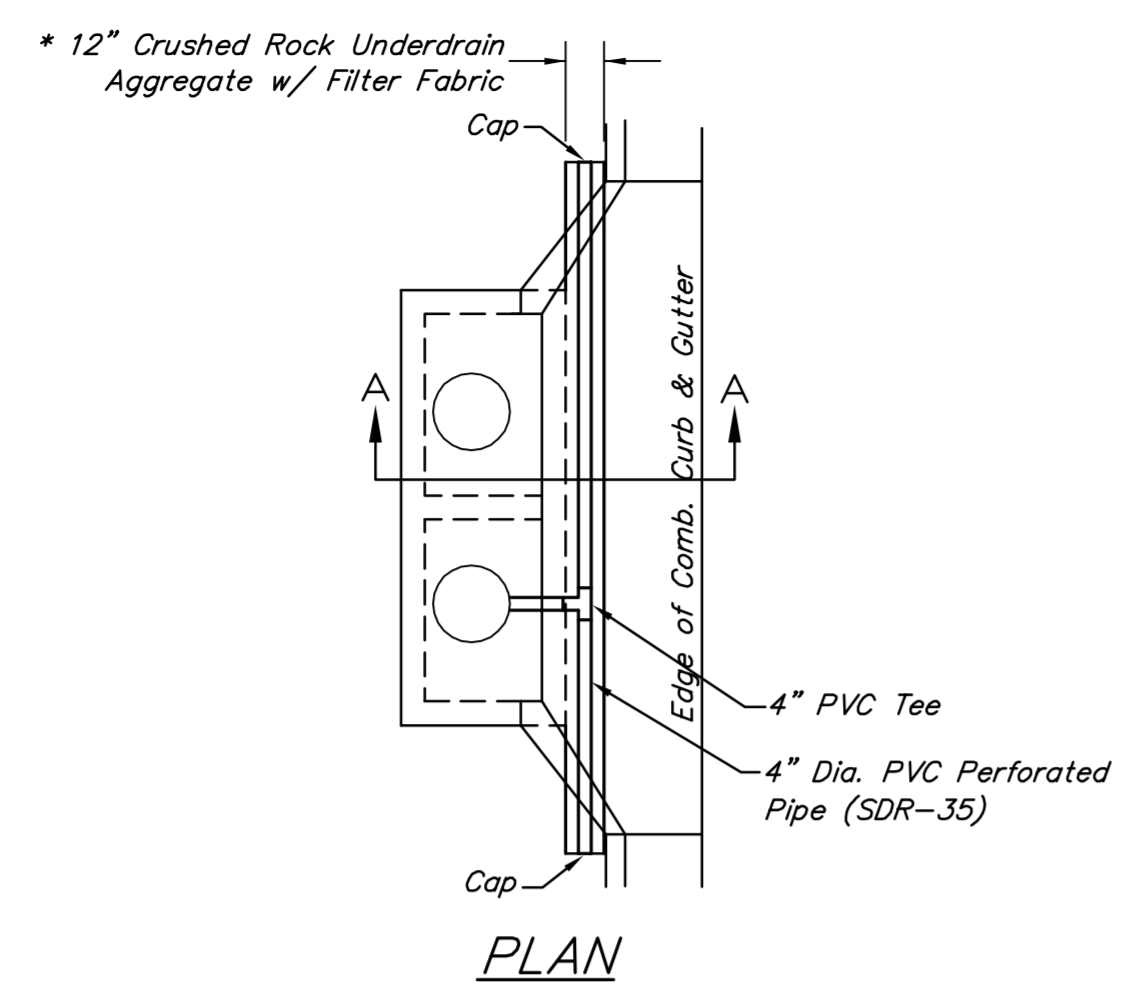


FHWA REGION NO.	STATE	PROJECT NO.	FISCAL YEAR	SHEET NO.	TOTAL SHEETS
7	KANSAS	87 N-0394-01	2010	8	129



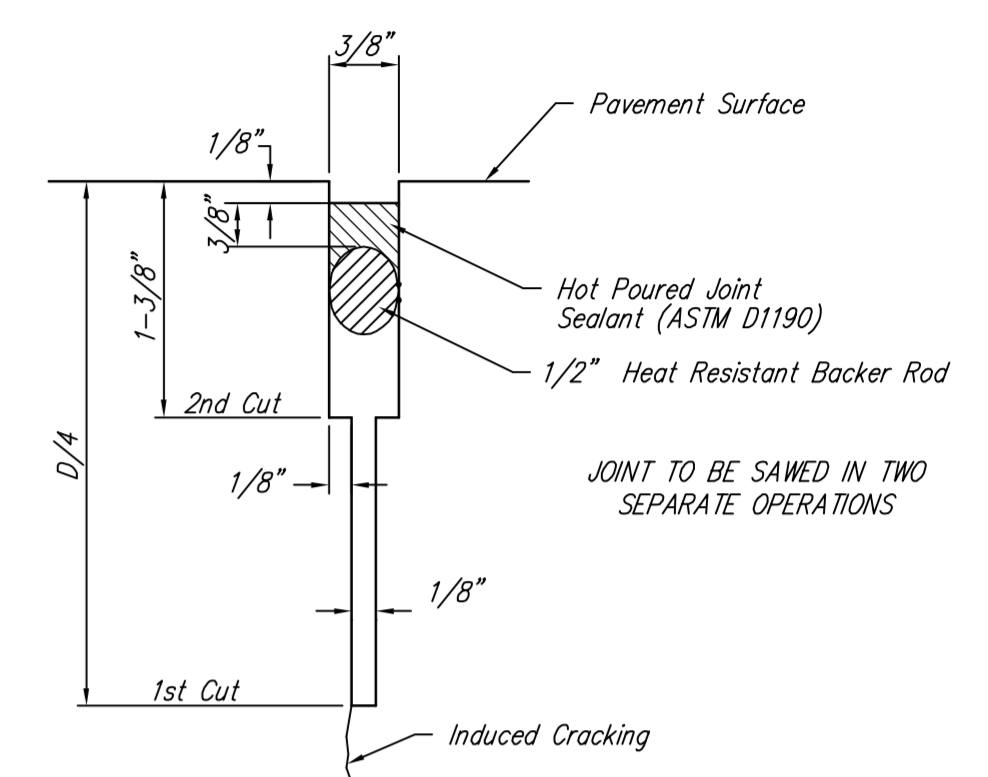
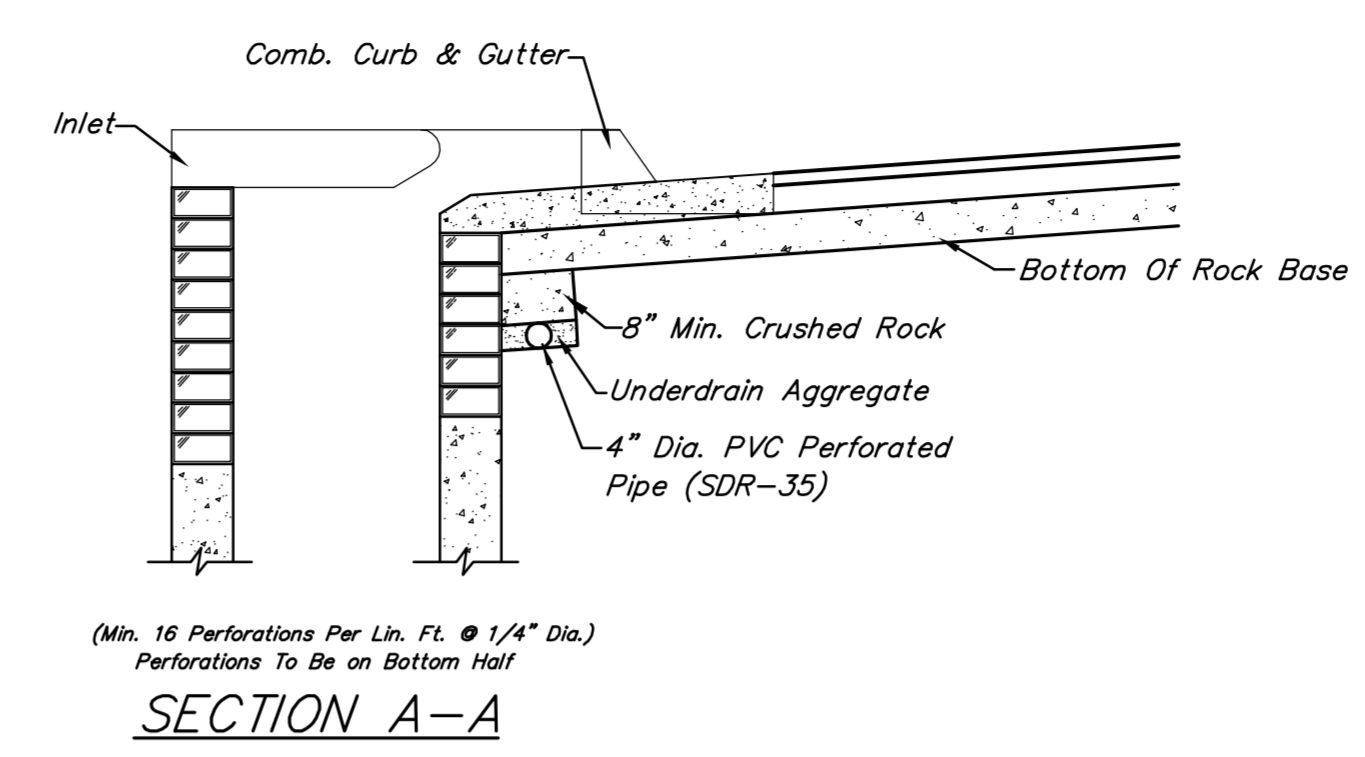
**\* UNDERDRAIN AGGREGATE**  
Percent of Aggregate Retained

1"	0
3/4"	0 to 10
3/8"	45 to 80
#4	90 to 100
#8	95 to 100

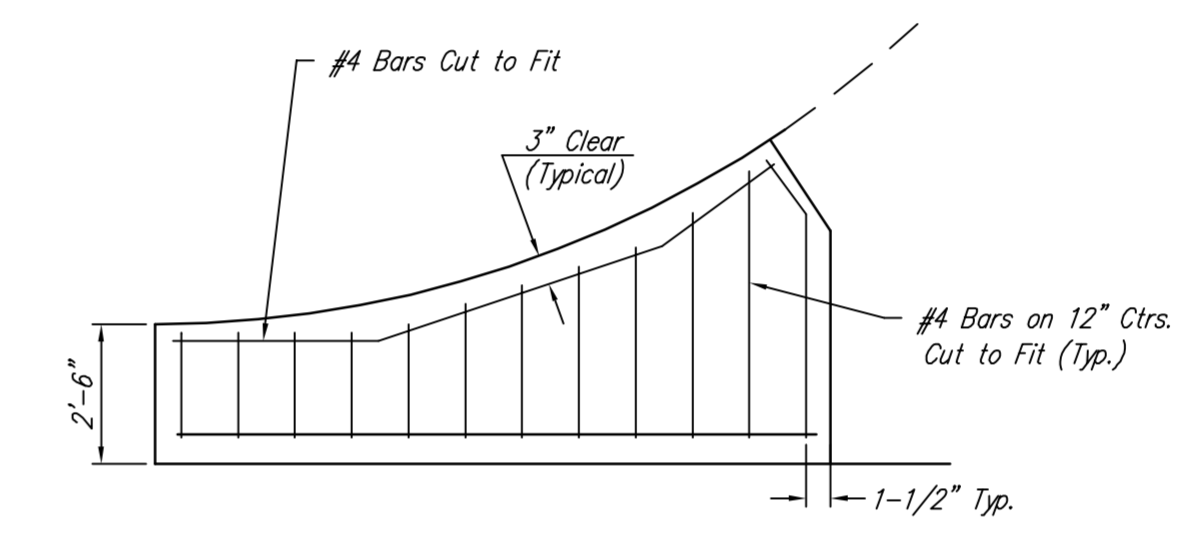
Rock Quality Shall Conform To The Requirements Specified By K.D.O.T. 1990 Edition Standard Specification Subsection 1102 For Durability Class I.

NOTE: Place 4" PVC Perforated Pipe at all drainage sump locations.  
Cost of Underdrain System to be INCIDENTAL to the Inlet Construction  
Inlet Type May Vary From That Shown.

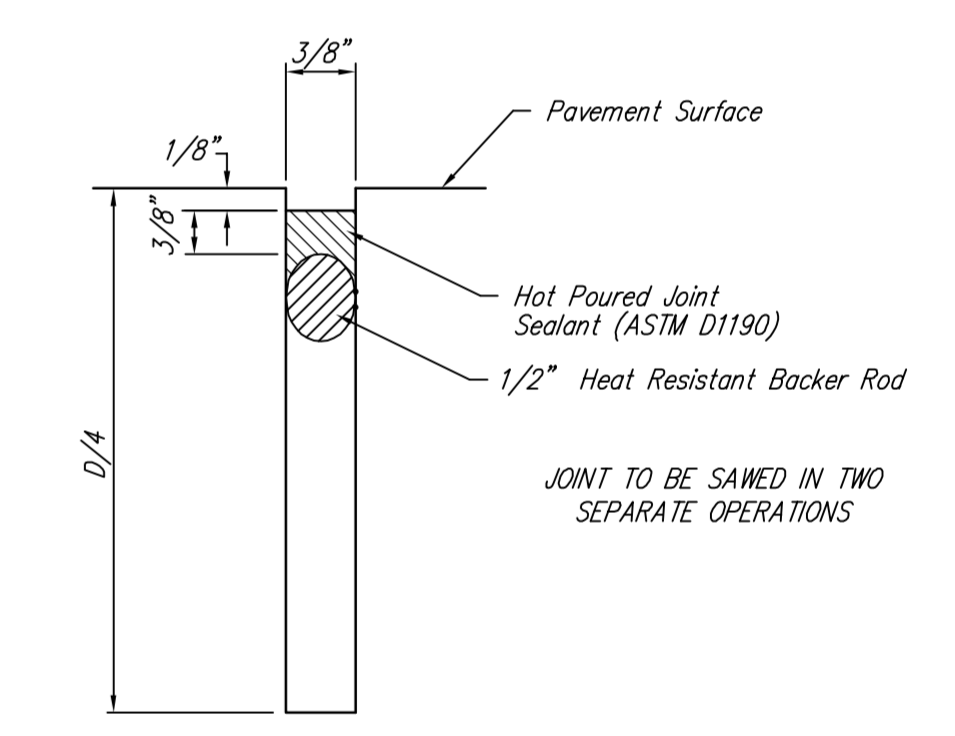
**PAVEMENT UNDERDRAIN DETAIL**  
NOT TO SCALE



**SAW JOINT DETAIL "A"**



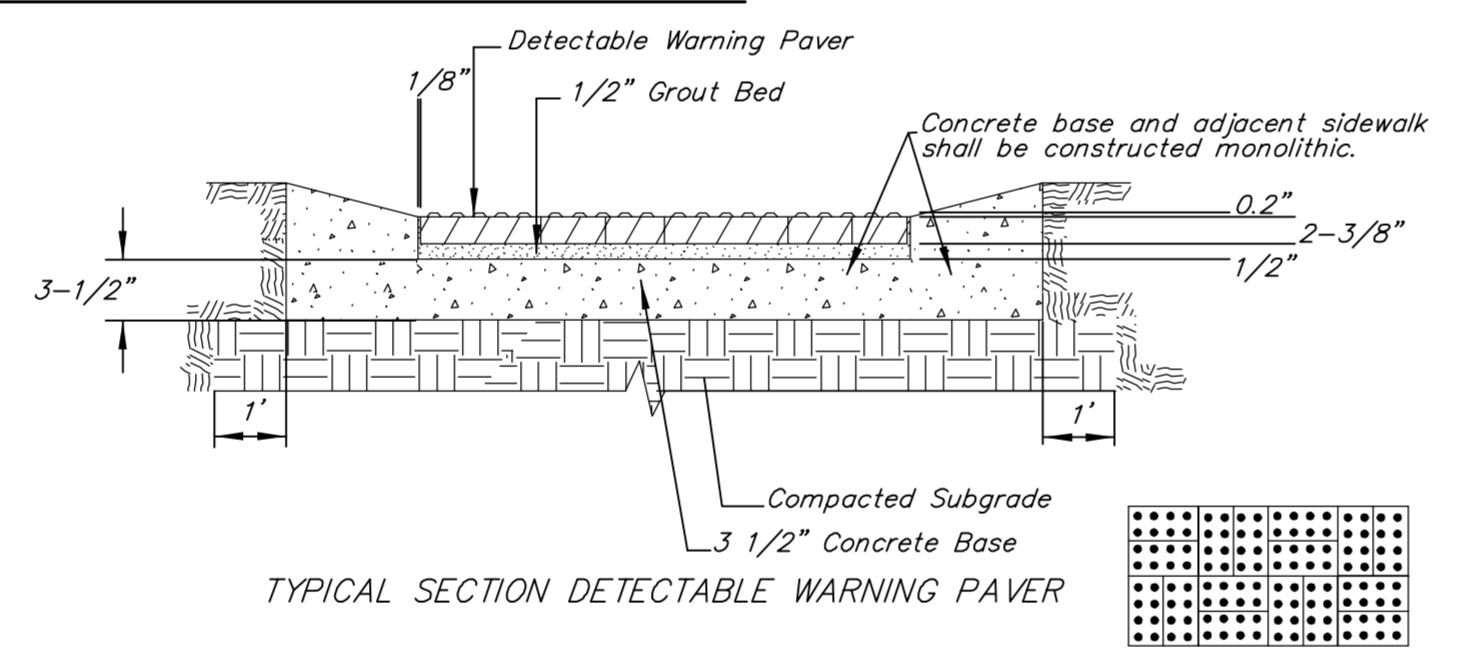
**WING REINFORCING DETAIL**



**SAW JOINT DETAIL "B"**

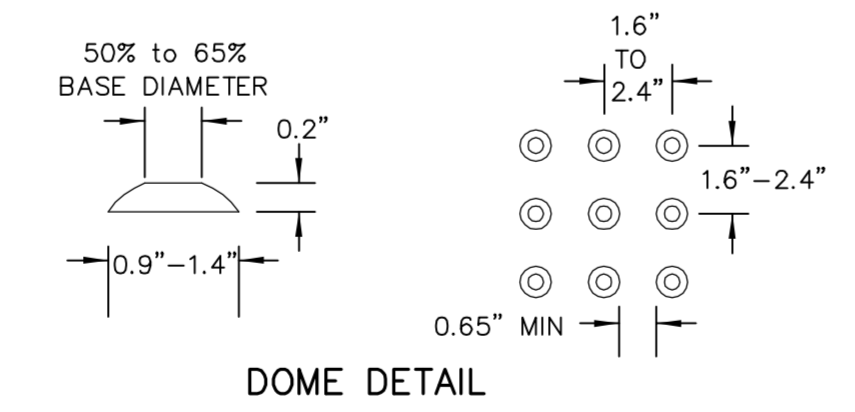
**(TYPE A)**  
**STANDARD WHEELCHAIR RAMP WITH**  
**DETECTABLE WARNING**  
**CONSTRUCTION DETAIL FOR STREETS**  
**WITH COMBINED CURB & GUTTER**

W= 4'0" FOR STANDARD RAMP  
W= 5'0" FOR RAMPS AT SCHOOL CROSSWALKS  
(OR TO MATCH EXISTING)

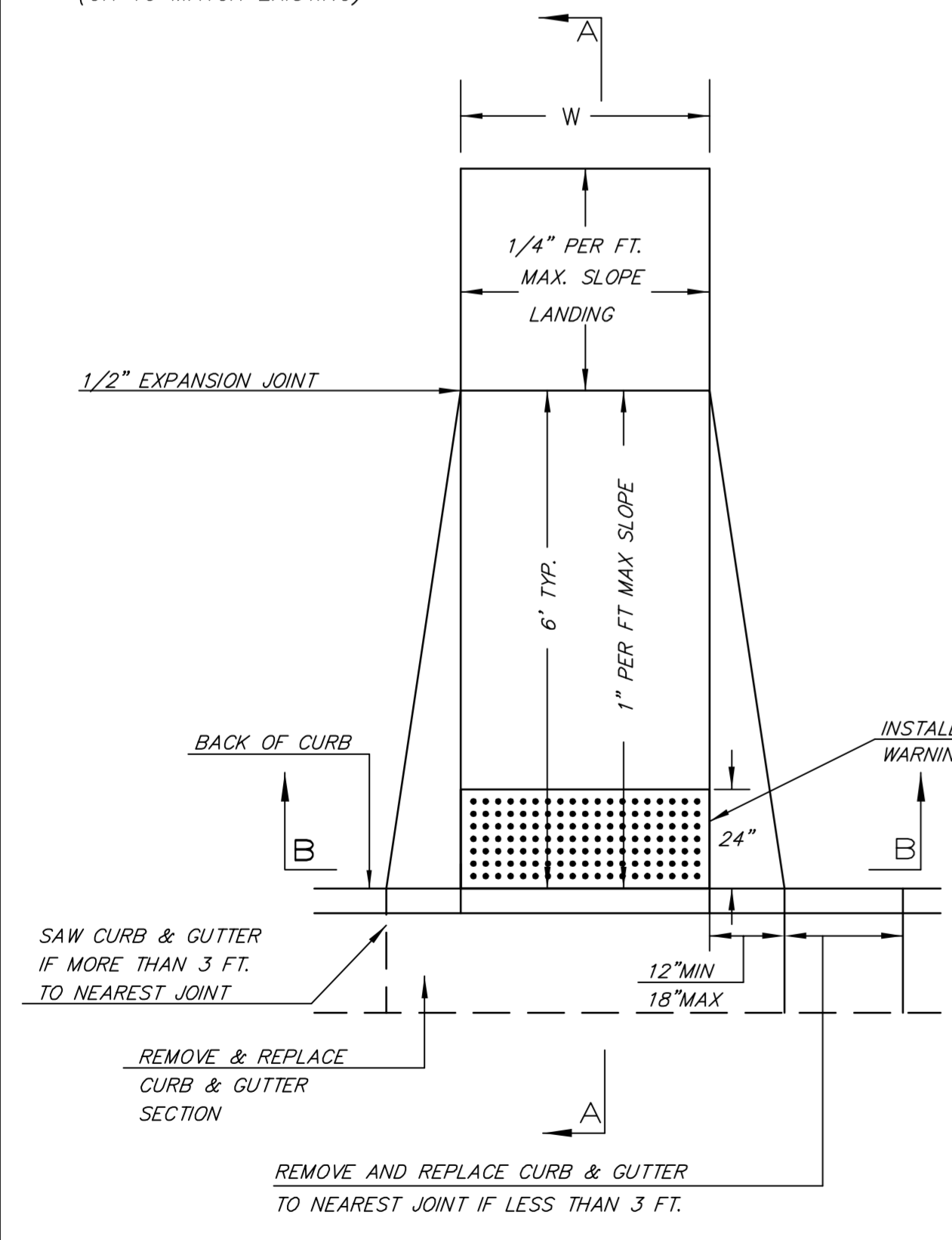


NOTE: RAMPS TO COMPLY WITH LATEST ADAAG GUIDELINES. PAVESTONE DETECTABLE WARNING PAVERS (OR AN APPROVED EQUAL) SHALL BE USED IN ALL WHEELCHAIR RAMPS. THE RED PAVER SHALL BE INSTALLED USING A BASKET WEAVE/PARQUET PATTERN. OTHER PATTERNS MAY BE USED WITH APPROVAL OF ENGINEER. SAND FILL JOINTS. ALIGN DOMES IN THE DIRECTION OF PEDESTRIAN TRAVEL.

**SECTION B-B**



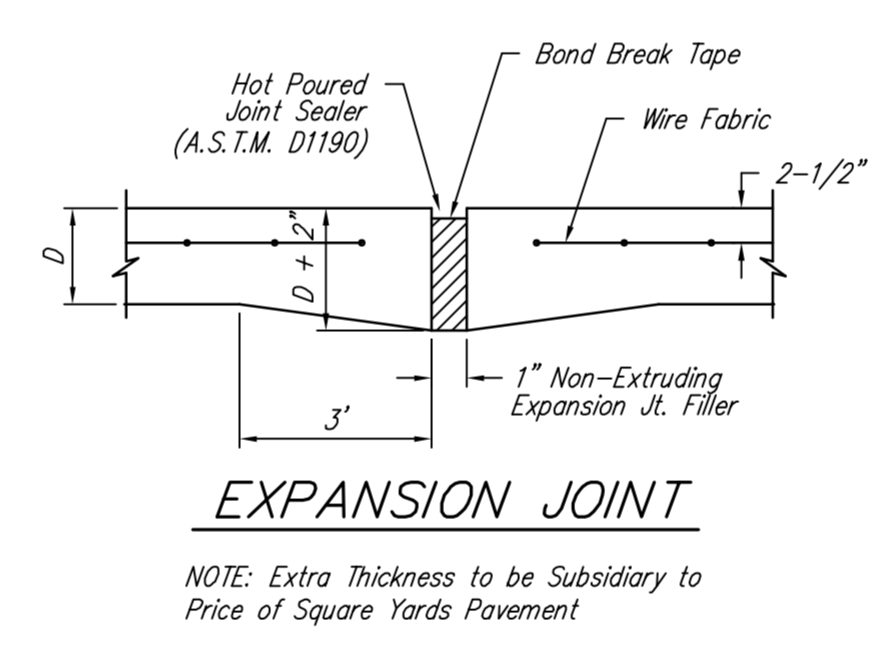
**DOME DETAIL**



**SECTION A-A**

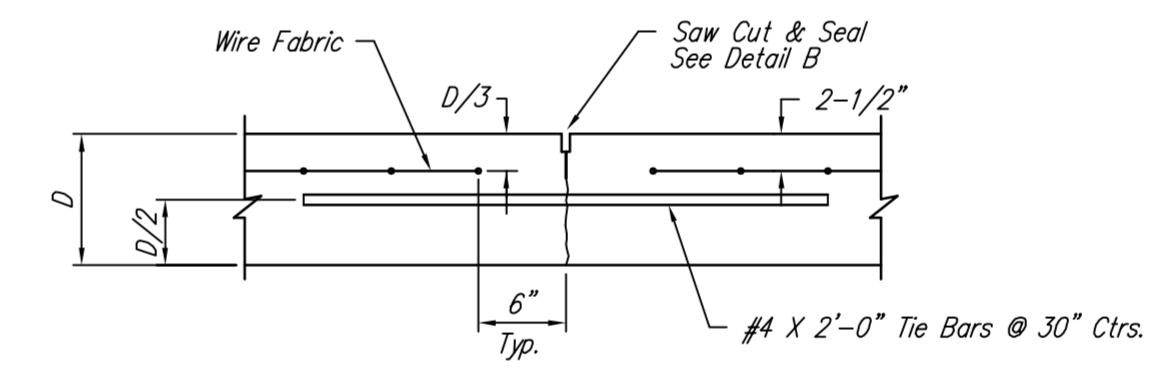
\*t= THICKNESS OF PAVEMENT (VARIABLE)

AUGUST 4, 2003

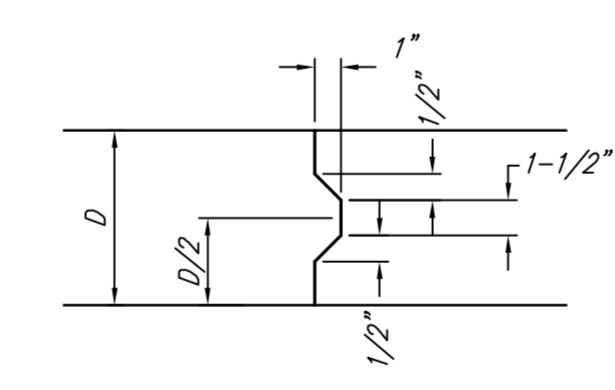


**EXPANSION JOINT**

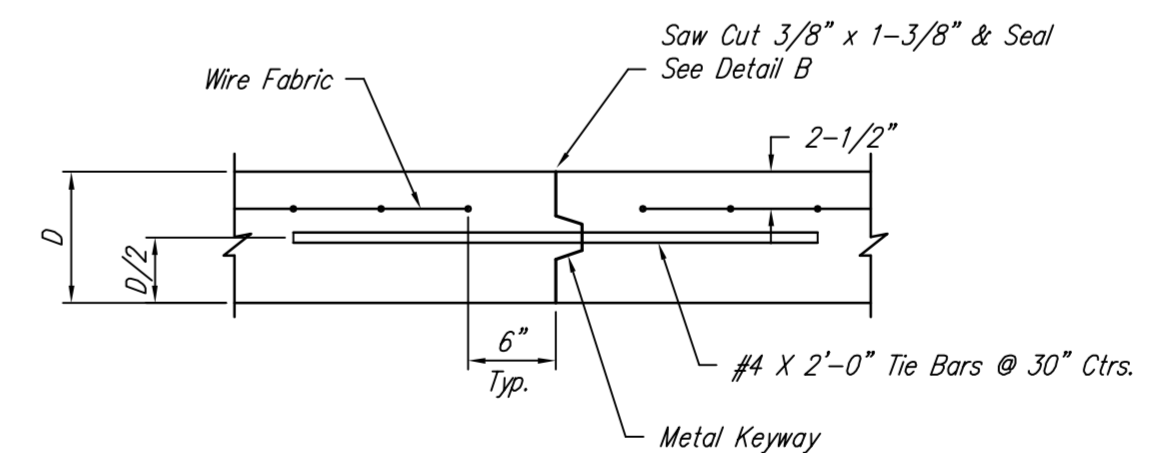
NOTE: Extra Thickness to be Subsidiary to Price of Square Yards Pavement



**LONGITUDINAL JOINT DETAIL (L.J.)**

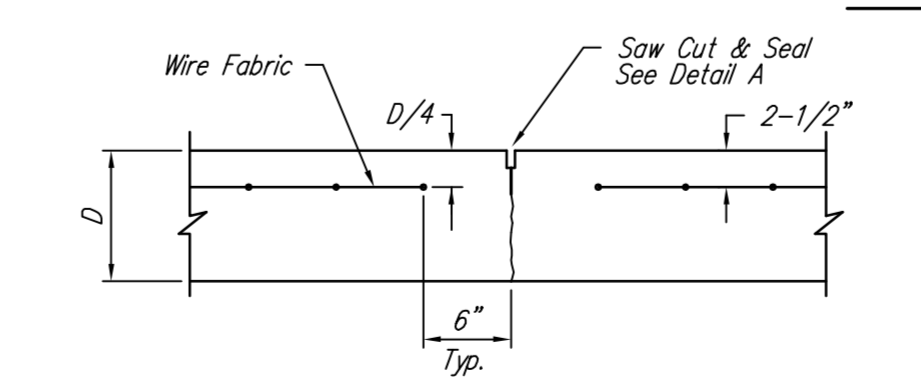


**KEYWAY DETAIL**

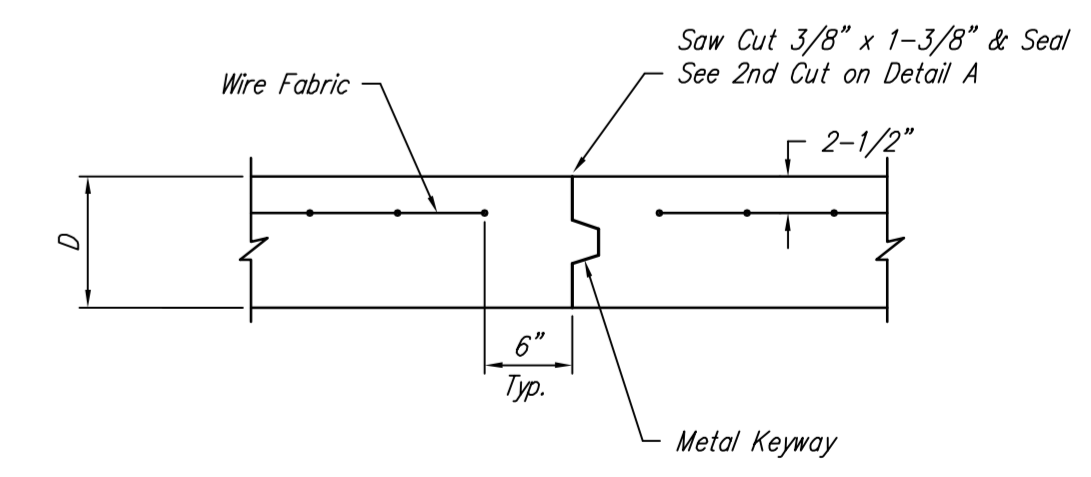


**OPTIONAL LONGITUDINAL JOINT DETAIL (L.J.) (CONSTRUCTION JOINT)**

NOTE: 6" X 12" W4XW4 Wire Fabric Reinforcing Shall Be Placed So That The Wires With The 6" Spacing Will Run Parallel With The Longitudinal Joints.



**CONTRACTION JOINT DETAIL (C.J.)**



**OPTIONAL CONTRACTION JOINT (CONSTRUCTION JOINT)**

Drawing File: F:\eng\47th Street South\Detail\ Pavdet.dwg

Design: TPV  
Drawn: STAFF  
Approved: TPV  
Scale: NOTED

Project No. 05-10E397 CAPITOL IMPROVEMENT PROJECT

**PAVEMENT DETAILS**

47TH STREET SOUTH - MERIDIAN AVENUE TO SENECA STREET

**Baughman Company, P.A.**  
315 Ellis St., Wichita, KS 67211 P 316-262-7271 F 316-262-0149  
ENGINEERING | SURVEYING | PLANNING | LANDSCAPE ARCHITECTURE

August 2010  
SHEET 8 OF 129