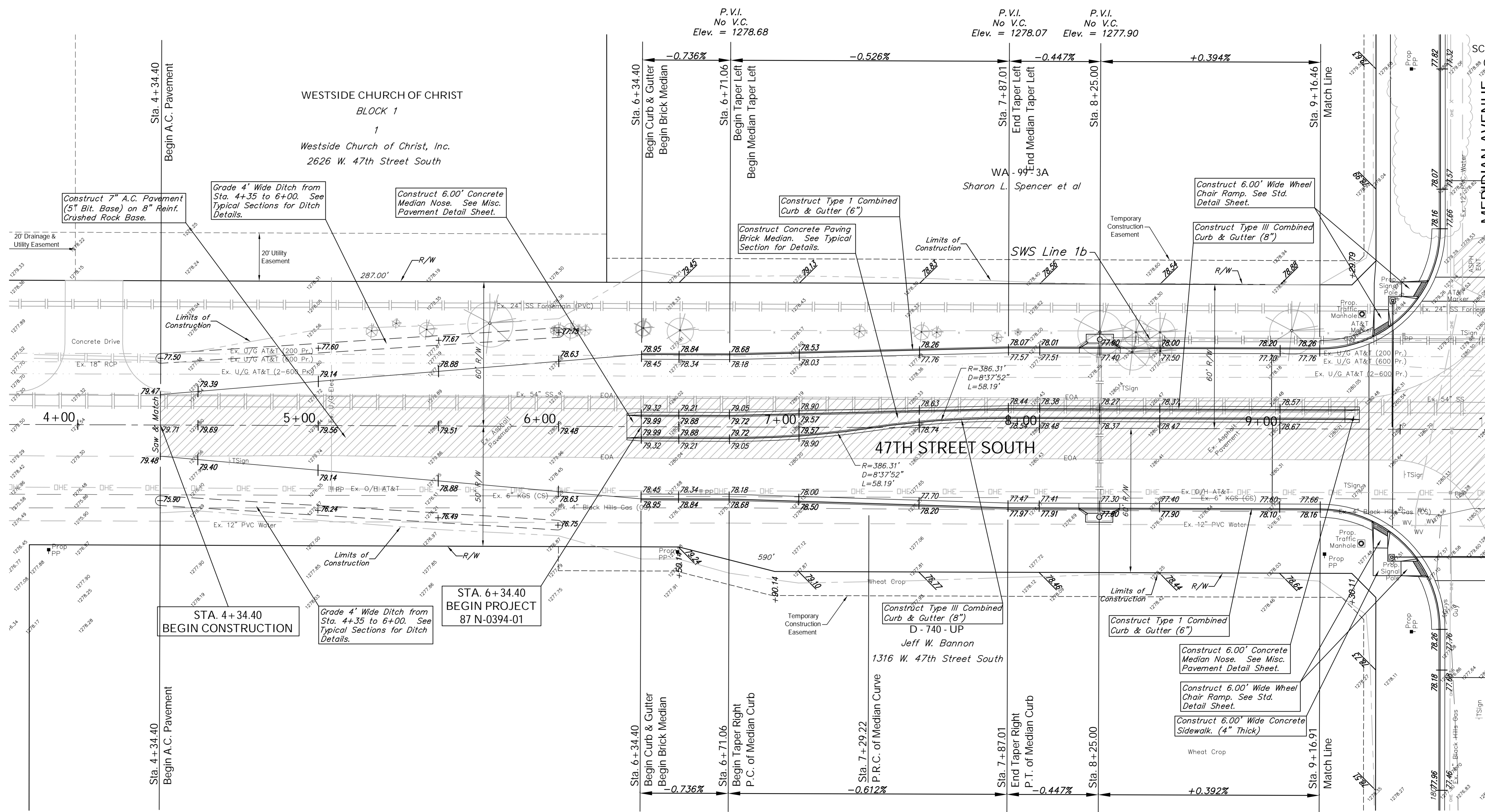
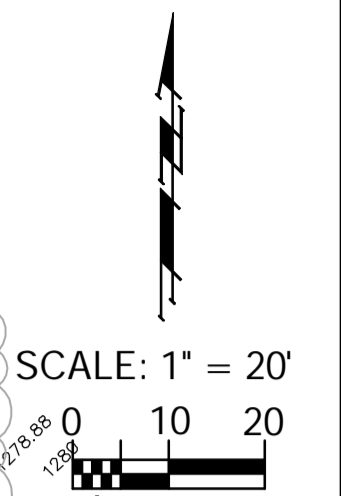


BENCHMARK:
 BM #1 - City of Wichita Disc Located in the Northeast Corner
 of the Intersection of Meridian and 47th Street South
 Sta. 10+29, 43' Lt.
 Elev. = 1279.18 (MSL)

FHWA REGION NO.	STATE	PROJECT NO.	FISCAL YEAR	SHEET NO.	TOTAL SHEETS
7	KANSAS	87 N-0394-01	2010	11	129



STA. 4 + 34.40
 BEGIN CONSTRUCTION

STA. 6 + 34.40
 BEGIN PROJECT
 87 N-0394-01

Note:
 Pavement, Sidewalks, and
 Etc. To Be Removed Are
 Indicated By:

P.V.I.
 No V.C.
 Elev. = 1277.97

P.V.I.
 No V.C.
 Elev. = 1277.80

Drawing File: E:\Projects\47th St South\47th Land\dwg\47th Base.dwg [Pav01]
 Project No. 05-10-E397 CAPITAL IMPROVEMENT PROJECT
47TH STREET SOUTH PAVING
 Sta. 4 + 34.40 to Sta. 9 + 16.91
 47TH STREET SOUTH - MERIDIAN AVENUE to SENECA STREET

Baughman Company, P.A.
 315 Ellis St., Wichita, KS 67211 P 316.262.1271 F 316.262.0149
 TPVING | SURVEYING | PLANNING | LANDSCAPE ARCHITECTURE

August 2010
 SHEET
11
 OF
129