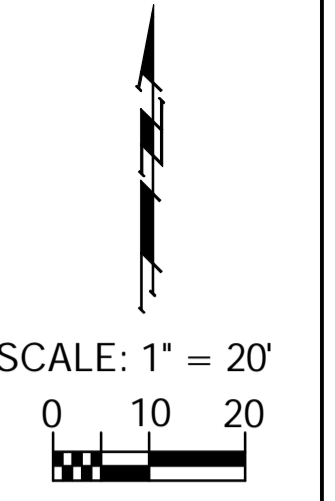
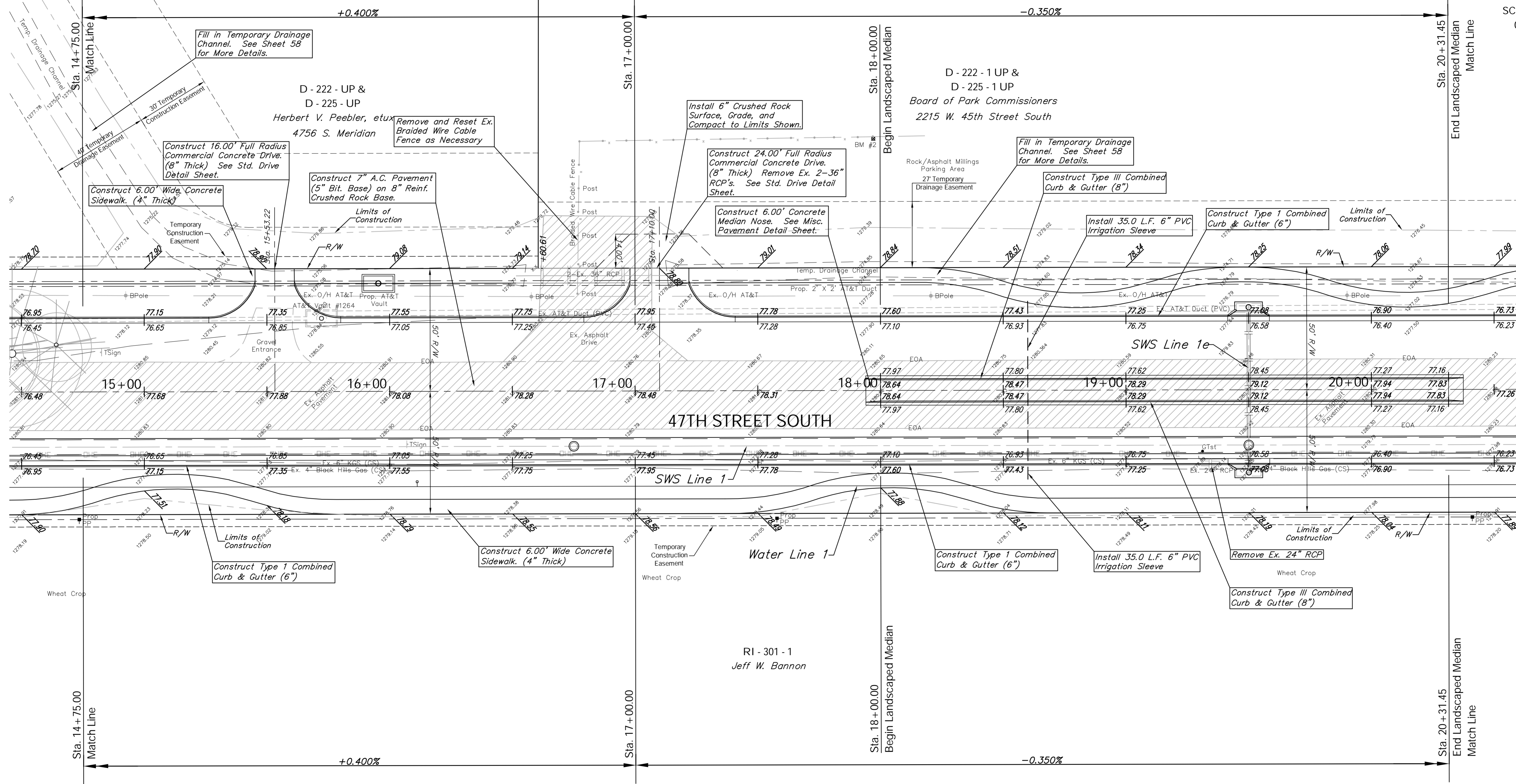


**BENCHMARK:**  
 BM #2 - Railroad Spike in the South Face of Wooden Fence  
 Post 120' East of the Northwest Corner of the City  
 Park Gravel Parking Lot  
 Sta. 17+97, 103' Lt.  
 Elev. = 1280.15 (MSL)

FHWA REGION NO.	STATE	PROJECT NO.	FISCAL YEAR	SHEET NO.	TOTAL SHEETS
7	KANSAS	87 N-0394-01	2010	13	129



P.V.I.  
 No V.C.  
 Elev. = 1277.95



P.V.I.  
 No V.C.  
 Elev. = 1277.95

**Note:**  
 Pavement, Sidewalks, and  
 Etc. To Be Removed Are  
 Indicated By:

Drawing File: E:\Projects\47th St South\47th Land\dwg\47th Base.dwg (Pav03)  
 Design: TPV  
 Drawn: STAFF  
 Approved: TPV  
 Scale: Noted

Project No. 05-10E397 CAPITAL IMPROVEMENT PROJECT  
**47TH STREET SOUTH PAVING**  
 Sta. 14 + 75.00 to Sta. 20 + 31.45  
 47TH STREET SOUTH - MERIDIAN AVENUE to SENECA STREET

**Baughman Company, P.A.**  
 315 Ellis St., Wichita, KS 67211 P 316.262.7271 F 316.262.0149  
 TPVING | SURVEYING | PLANNING | LANDSCAPE ARCHITECTURE

August 2010  
 SHEET  
**13**  
 OF  
**129**