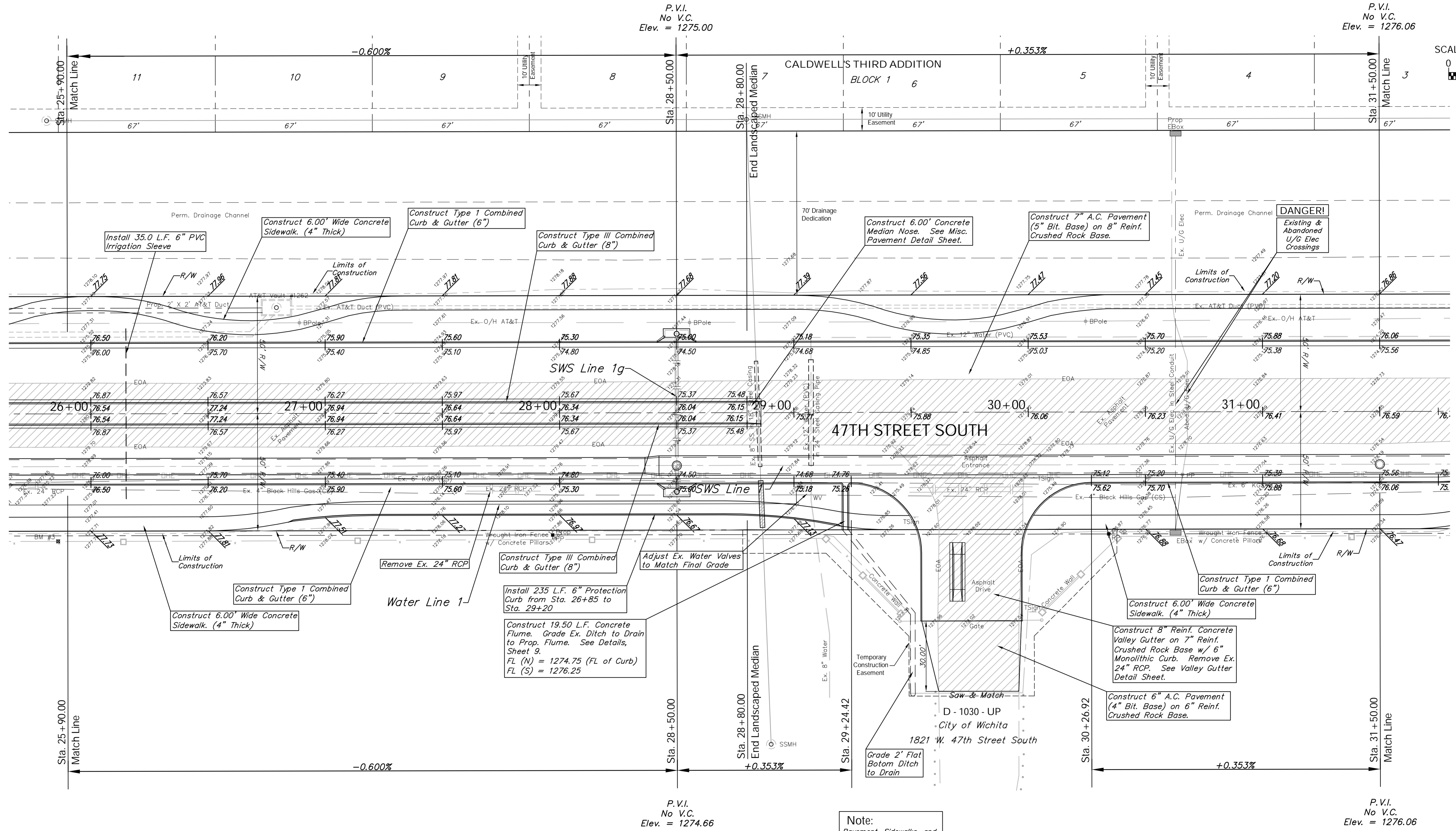
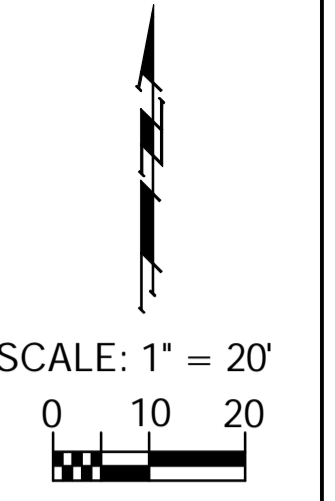


BENCHMARK:
 BM #3 - "I" Cut in the Concrete Base of Metal Fence Post
 28' West of the Fourth Concrete Pillar West of the
 South Lakes Park Entrance
 Sta. 25+86, 54' Rt.
 Elev. = 1277.92 (MSL)

FHWA REGION NO.	STATE	PROJECT NO.	FISCAL YEAR	SHEET NO.	TOTAL SHEETS
7	KANSAS	87-N-0394-01	2010	15	129



Note:
 Pavement, Sidewalks, and
 Etc. To Be Removed Are
 Indicated By:

Drawing File: E:\Projects\47th St South\47th Land\dwg\47th Base.dwg (Pav05)
 Design: TPV
 Drawn: STAFF
 Approved: TPV
 Scale: Noted

Project No. 05-10E397 CAPITAL IMPROVEMENT PROJECT
47TH STREET SOUTH PAVING
 Sta. 25+90.00 to Sta. 31+50.00
 47TH STREET SOUTH - MERIDIAN AVENUE to SENECA STREET

Baughman Company, P.A.
 315 Ellis St., Wichita, KS 67211 P 316.262.7271 F 316.262.0149
 TPVING | SURVEYING | PLANNING | LANDSCAPE ARCHITECTURE

August 2010
 SHEET
 15
 OF
 129