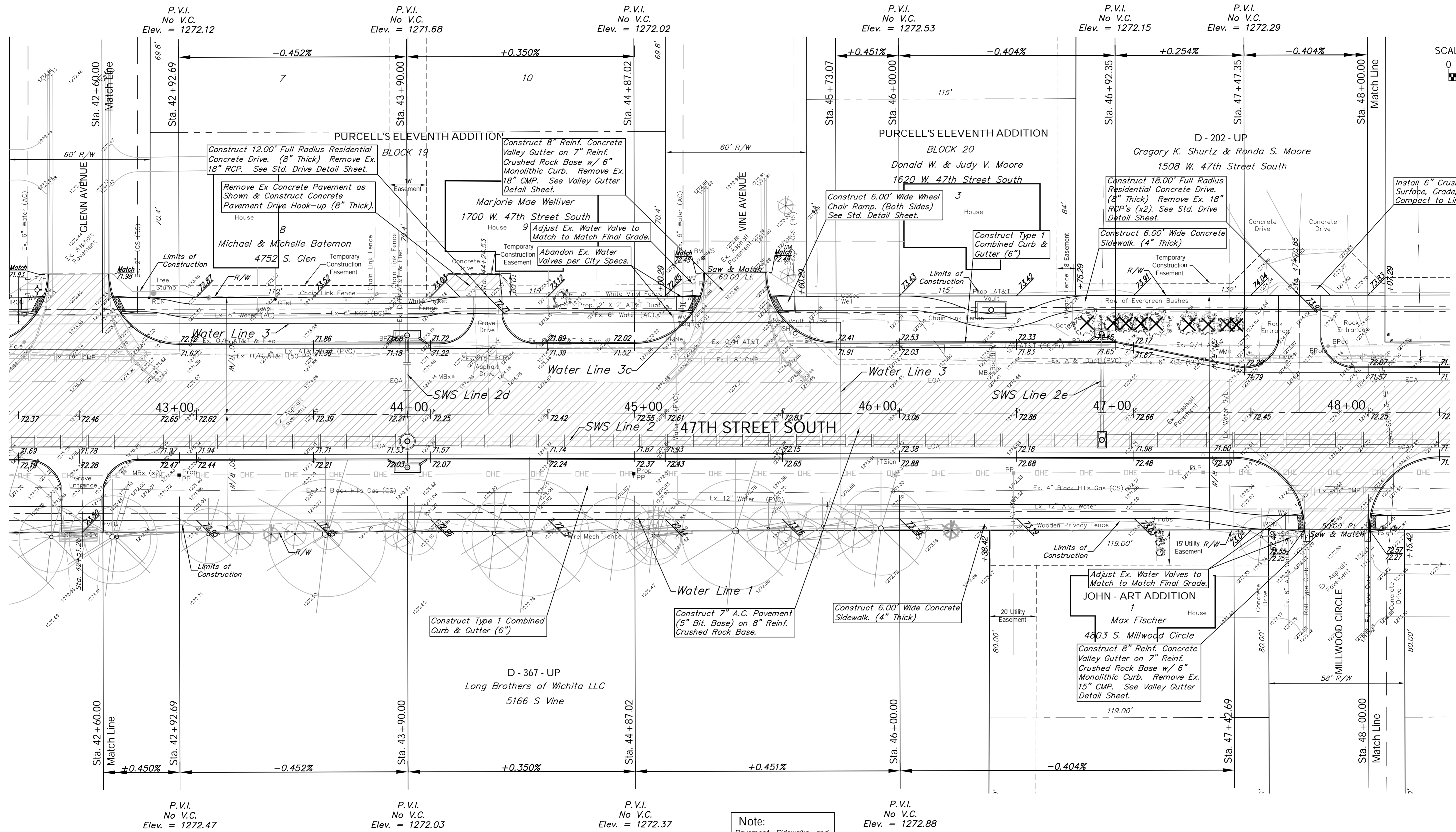
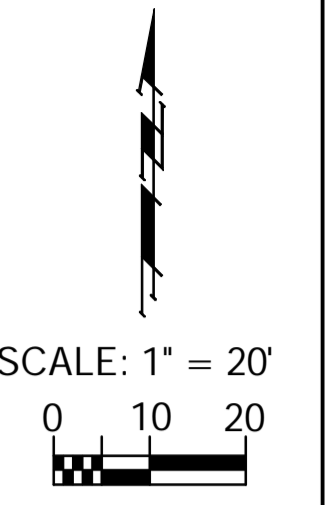


BENCHMARK:
 BM #5 - Cut into Top of Curb in the Northwest Corner of the Intersection of 47th Street South and Vine Avenue
 Sta. 45+17, 66' Lt.
 Elev. = 1272.89 (MSL)

FHWA REGION NO.	STATE	PROJECT NO.	FISCAL YEAR	SHEET NO.	TOTAL SHEETS
7	KANSAS	87-N-0394-01	2010	18	129



P.V.I.
No V.C.
Elev. = 1272.47

P.V.I.
No V.C.
Elev. = 1272.03

P.V.I.
No V.C.
Elev. = 1272.37

P.V.I.
No V.C.
Elev. = 1272.88

Existing Mailboxes that Conflict with the Proposed Construction Shall be Removed and Reset on Non-Hazardous Supports. Cost to be SUBSIDIARY to "Site Restoration."

Note:
Pavement, Sidewalks, and Etc. To Be Removed Are Indicated By:

Note:
Trees/Shrubs to be removed are marked thus:

Drawing File: E:\Projects\47th St South\47th Land\dwg\47th Base.dwg (Pav08)
 Project No. 05-10E397 CAPITAL IMPROVEMENT PROJECT
47TH STREET SOUTH PAVING
 Sta. 42 + 60.00 to Sta. 48 + 00.00
 47TH STREET SOUTH - MERIDIAN AVENUE to SENECA STREET