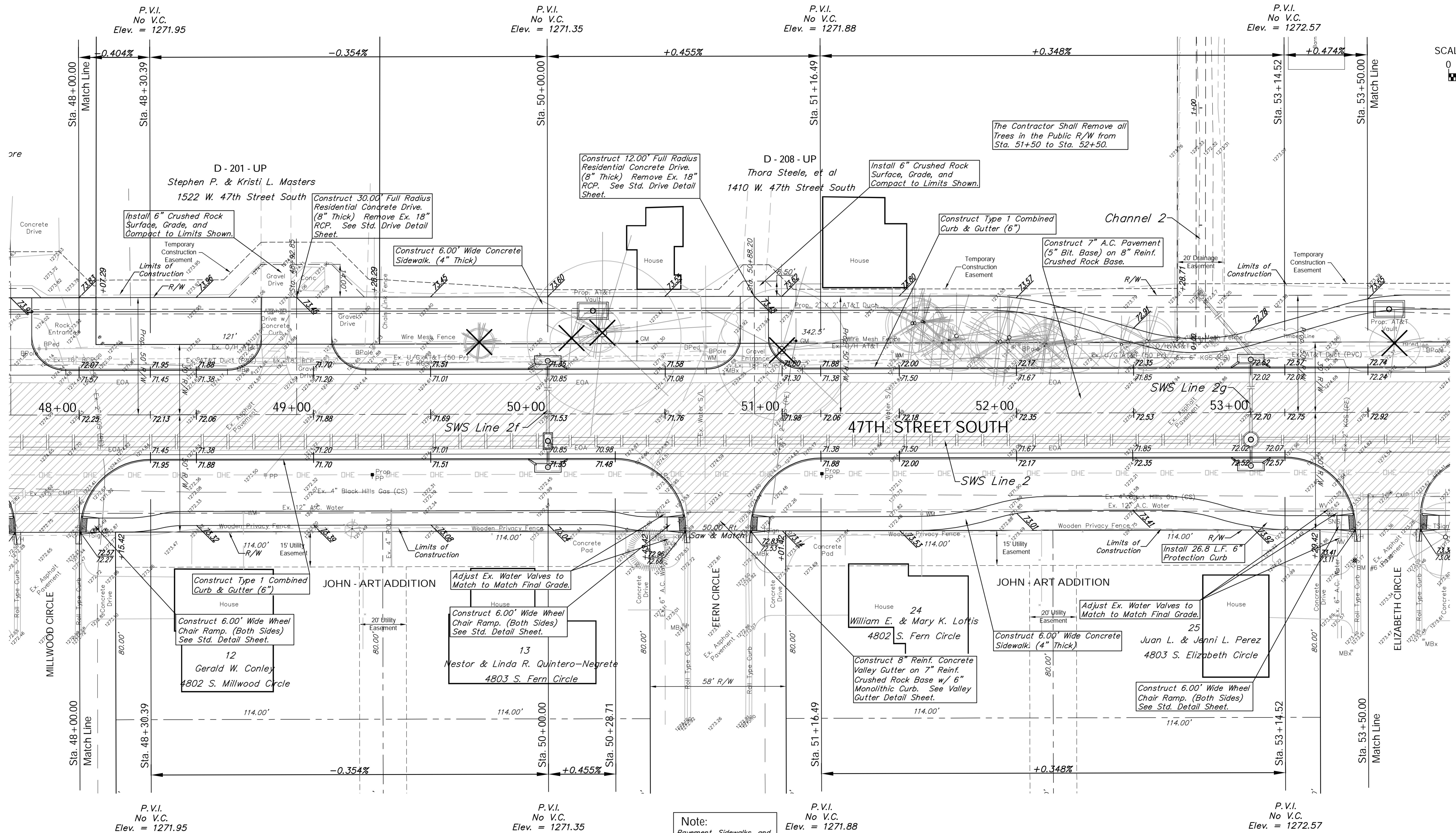
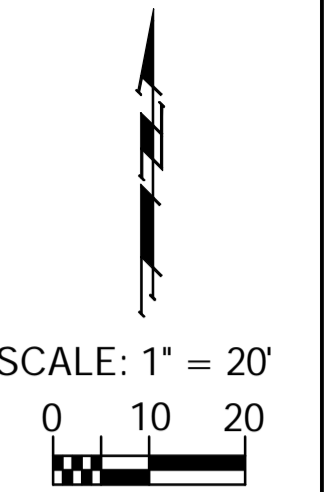


BENCHMARK:
 BM #5 - Cut into Top of Curb in the Northwest Corner of the Intersection of 47th Street South and Vine Avenue Sta. 45+17, 66' Lt. Elev. = 1272.89 (MSL)

FHWA REGION NO.	STATE	PROJECT NO.	FISCAL YEAR	SHEET NO.	TOTAL SHEETS
7	KANSAS	87 N-0394-01	2010	19	129



Existing Mailboxes that Conflict with the Proposed Construction Shall be Removed and Reset on Non-Hazardous Supports. Cost to be SUBSIDIARY to "Site Restoration."

Note:
 Pavement, Sidewalks, and Etc. To Be Removed Are Indicated By:

Note:
 Trees/Shrubs to be removed are marked thus:

Drawing File: E:\Projects\47th St South\47th Land\dwg\47th Base.dwg (Pav09)
 Project No. 05-10E397 CAPITAL IMPROVEMENT PROJECT
 Design: TPV
 Drawn: STAFF
 Approved: TPV
 Scale: Noted
47TH STREET SOUTH PAVING
 Sta. 48+00.00 to Sta. 53+50.00
 47TH STREET SOUTH - MERIDIAN AVENUE TO SENECA STREET

August 2010
 SHEET 19 OF 129

 Baughman Company, P.A.
 315 Ellis St., Wichita, KS 67211 P 316-262-7271 F 316-262-0149
 TPVING | SURVEYING | PLANNING | LANDSCAPE ARCHITECTURE