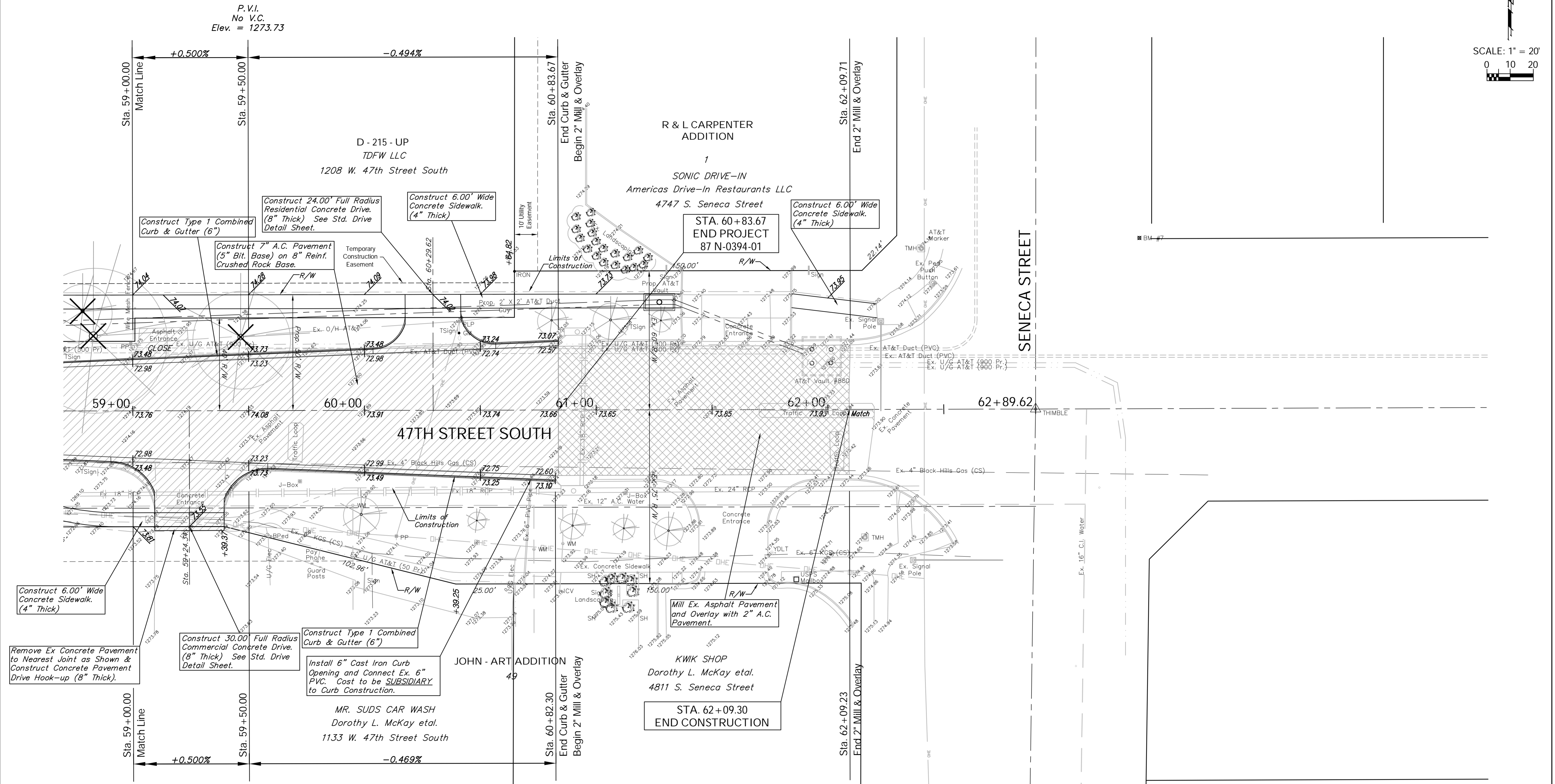
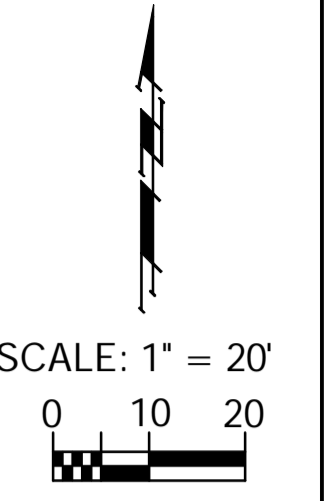


BENCHMARK:
 BM #7 - City of Wichita Disc Located in the Northeast Corner
 of the Intersection of Seneca and 47th Street South
 Sta. 63+35, 74' Lt.
 Elev. = 1274.74 (MSL)

FHWA REGION NO.	STATE	PROJECT NO.	FISCAL YEAR	SHEET NO.	TOTAL SHEETS
7	KANSAS	87 N-0394-01	2010	21	129



P.V.I.
 No V.C.
 Elev. = 1273.73

Note:
 Trees/Shrubs to be removed are marked thus:

Note:
 Ex. Asphalt Pavement to be Milled and Overlayed is Indicated by:

Note:
 Pavement, Sidewalks, and Etc. To Be Removed Are Indicated By:

Design File: E:\Projects\47th St South\47th Land\dwg\47th Base.dwg [Pav11]
 Project No. 05-10E397 CAPITAL IMPROVEMENT PROJECT
47TH STREET SOUTH PAVING
 Sta. 59+00.00 to Sta. 62+09.71
 47TH STREET SOUTH - MERIDIAN AVENUE to SENECA STREET
 Design: TPV
 Drawn: STAFF
 Approved: TPV
 Scale: Noted