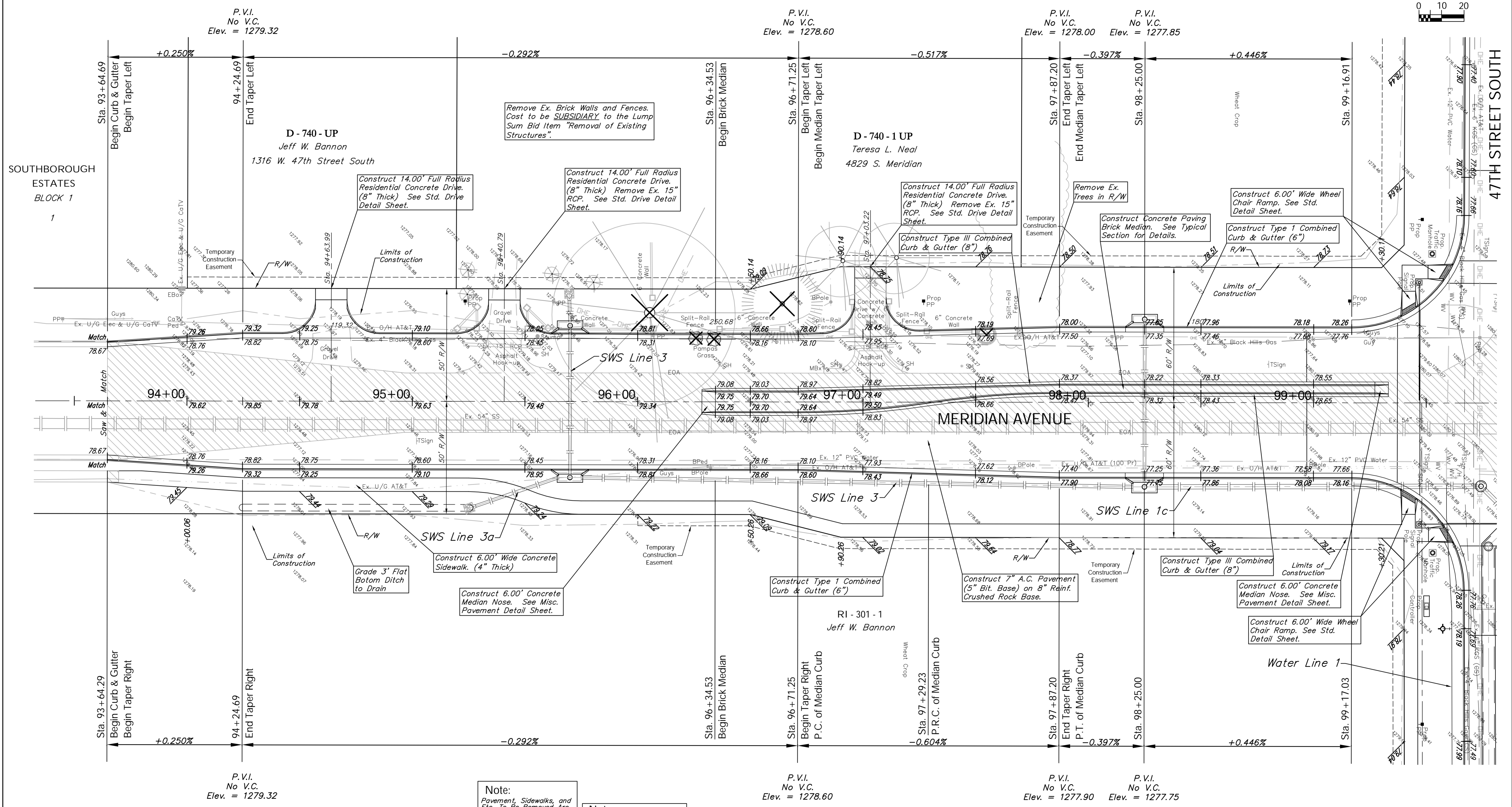
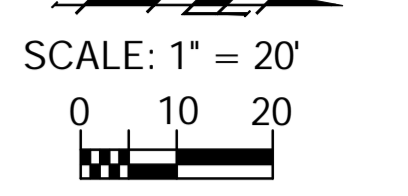


BENCHMARK:
 BM #1 - City of Wichita Disc Located in the Northeast Corner of the Intersection of Meridian and 47th Street South
 Sta. 10+29, 43' Lt.
 Elev. = 1279.18 (MSL)

FHWA REGION NO.	STATE	PROJECT NO.	FISCAL YEAR	SHEET NO.	TOTAL SHEETS
7	KANSAS	87 N-0394-01	2010	22	129



Note:
 Pavement, Sidewalks, and Etc. To Be Removed Are Indicated By:

Note:
 Trees/Shrubs to be removed are marked thus:

Drawing File: E:\Projects\47th St South\47th Land\dwg\47th Base.dwg [Plt12]
 Project No. 05-10E397 CAPITAL IMPROVEMENT PROJECT
 Design: TPV
 Drawn: STAFF
 Approved: TPV
 Scale: Noted
MERIDIAN AVENUE PAVING
 Sta. 93 + 64.29 to Sta. 99 + 17.03
 47TH STREET SOUTH - MERIDIAN AVENUE to SENECA STREET