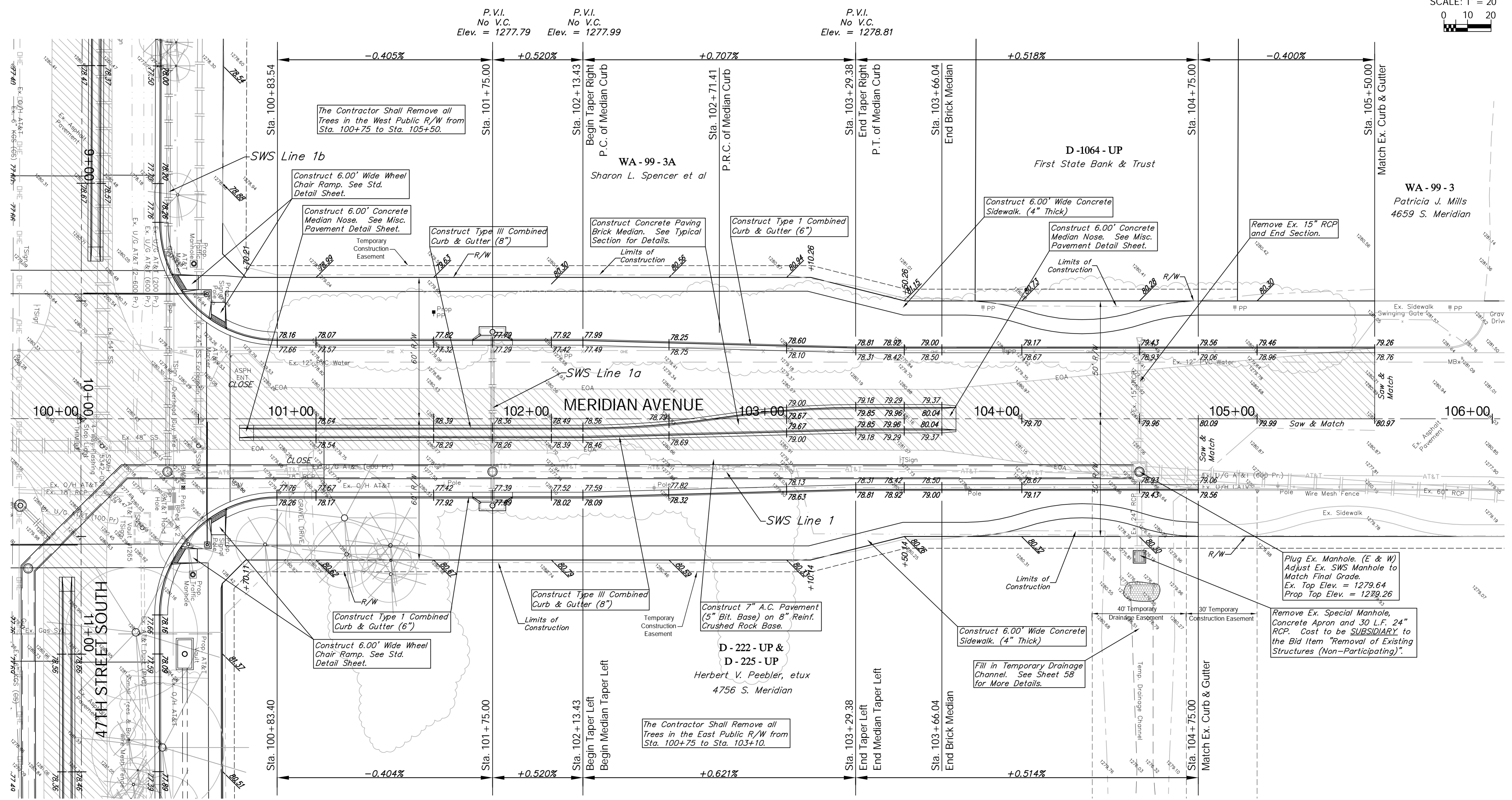
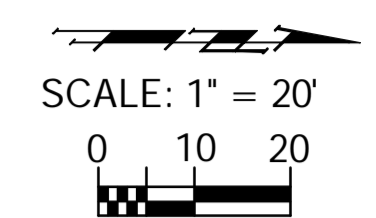


BENCHMARK:
 BM #1 - City of Wichita Disc Located in the Northeast Corner of the Intersection of Meridian and 47th Street South Sta. 10+29, 43' Lt. Elev. = 1279.18 (MSL)

FHWA REGION NO.	STATE	PROJECT NO.	FISCAL YEAR	SHEET NO.	TOTAL SHEETS
7	KANSAS	87-N-0394-01	2010	23	129



Note:
 Pavement, Sidewalks, and Etc. To Be Removed Are Indicated By:



Design: TPV
 Drawn: STAFF
 Approved: TPV
 Scale: Noted

Project No. 05-10-E397 CAPITAL IMPROVEMENT PROJECT
MERIDIAN AVENUE PAVING
 Sta. 100+83.40 to Sta. 105+66.04
 47TH STREET SOUTH - MERIDIAN AVENUE to SENECA STREET

Baughman Company, P.A.
 315 Ellis St., Wichita, KS 67211 P 316-262-1271 F 316-262-0149
 TPVING | SURVEYING | PLANNING | LANDSCAPE ARCHITECTURE