

Construct 9" Reinforced Concrete Pavement on 6" Reinforced Crushed Rock Base

Construct 10.00' Wide Concrete Paving Brick Crosswalk. See Misc. Pavement Detail Sheet.

Construct 9" Reinforced Concrete Pavement on 6" Reinforced Crushed Rock Base Behind Curb Return. (Typical on All Four Returns.) See Detail, This Sheet.

NOTE
At all locations where joints are not congruent through pavement sections, Contractor shall drill full pavement depth & seal. (See Detail This Sheet)

Install #4 Bars 24" Long at 30" on Center

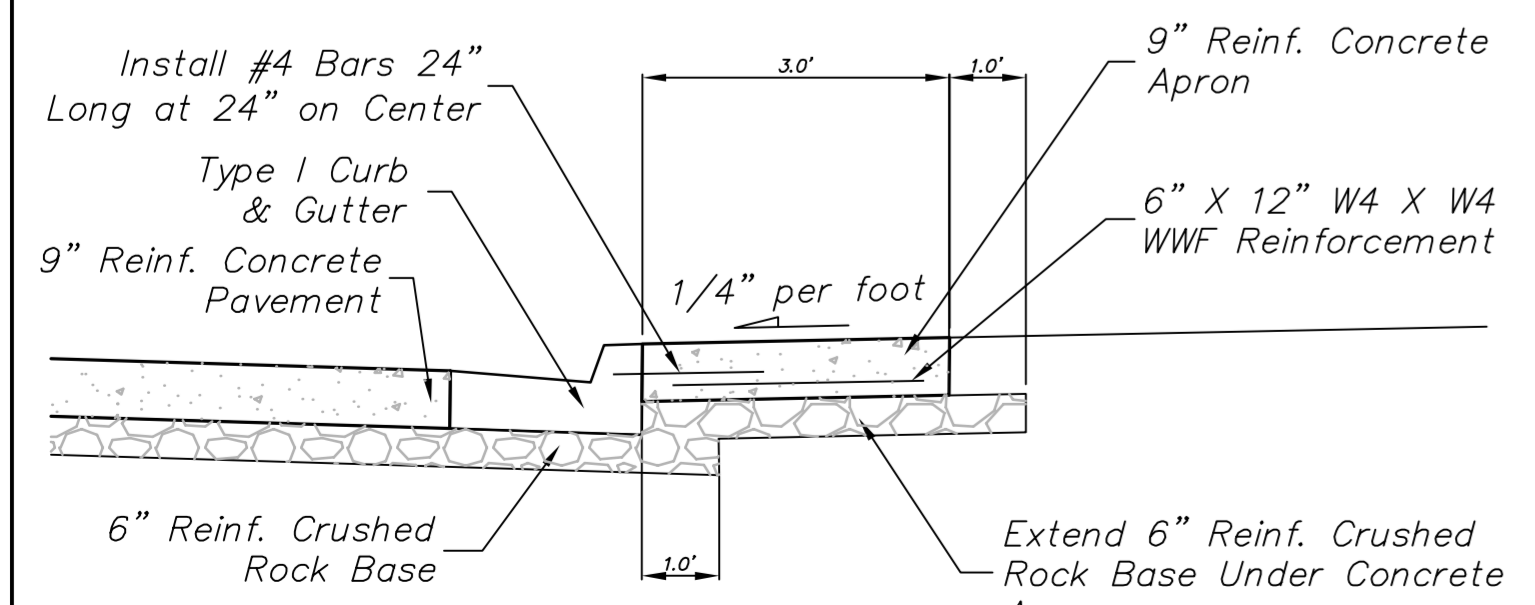
Proposed 7" A.C. Pavement on 8" Reinforced Crushed Rock Base. (Typical on All Approaches)

Construct 3.00' Brick Paver Median with 8" Median Curb and 6.00' Concrete Median Nose. (Typical for all Approaches)

Construct 10.00' Wide Concrete Paving Brick Crosswalk. See Misc. Pavement Detail Sheet.

Install 6" X 12" W4-W4 Wire Welded Fabric

Construct 9" Reinforced Concrete Pavement on 6" Reinforced Crushed Rock Base



SECTION A-A

Saw & Seal Joints to Match Joints in the Type 1 Curb & Gutter

Drawing File: F:\P\eng\47th St. South\47th Land\dwg\47th Base.dwg (Joint)
Project No. 05-10-E397 CAPITAL IMPROVEMENT PROJECT
47TH STREET SOUTH & MERIDIAN AVENUE INTERSECTION JOINT PLAN
47TH STREET SOUTH - MERIDIAN AVENUE TO SENECA STREET