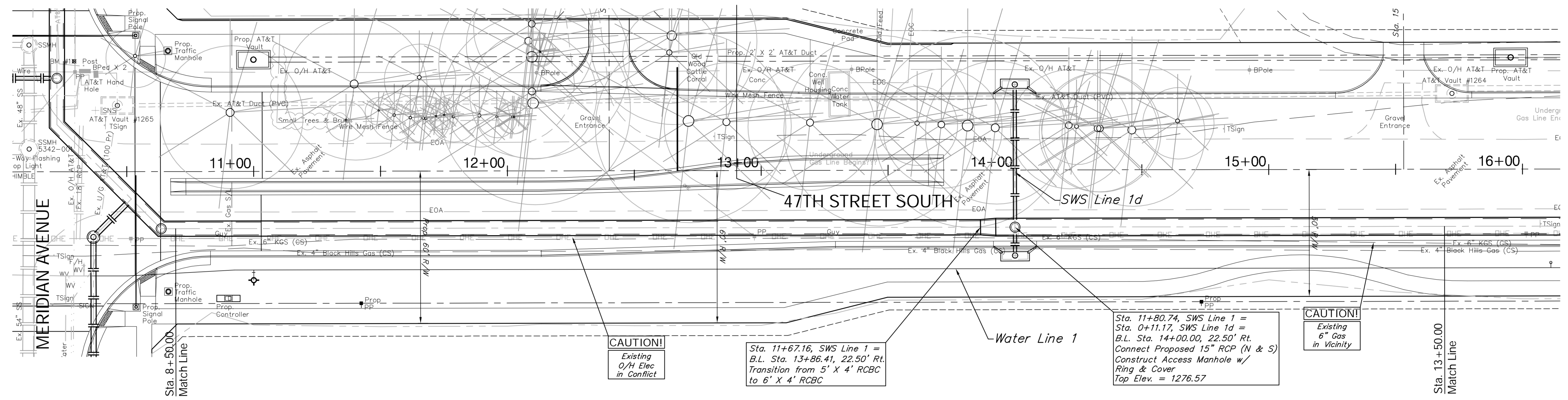


**BENCHMARK:**  
 BM #1 - City of Wichita Disc Located in the Northeast Corner  
 of the Intersection of Meridian and 47th Street South  
 Sta. 10+29, 43' Lt.  
 Elev. = 1279.18 (MSL)

FHWA REGION NO.	STATE	PROJECT NO.	FISCAL YEAR	SHEET NO.	TOTAL SHEETS
7	KANSAS	87 N-0394-01	2010	29	129

SCALE:  
 HORIZONTAL: 1" = 20'  
 VERTICAL: 1" = 5'



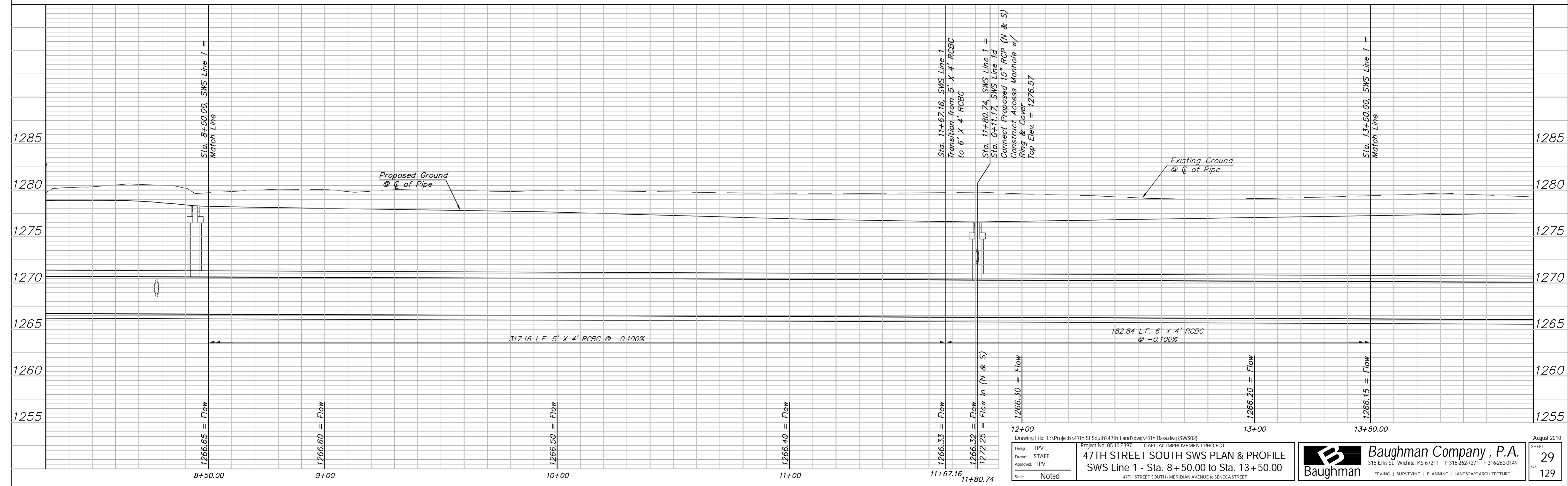
**CAUTION!**  
 Existing  
 O/H Elec  
 in Conflict

Sta. 11+67.16, SWS Line 1 =  
 B.L. Sta. 13+86.41, 22.50' Rt.  
 Transition from 5' X 4' RCBC  
 to 6' X 4' RCBC

Water Line 1

Sta. 11+80.74, SWS Line 1 =  
 Sta. 0+11.17, SWS Line 1d =  
 B.L. Sta. 14+00.00, 22.50' Rt.  
 Construct Proposed 15" RCP (N & S)  
 Ring & Cover  
 Top Elev. = 1276.57

**CAUTION!**  
 Existing  
 6" Gas  
 in Vicinity



Drawing File: E:\Projects\47th St South\47th Land\dwg\47th Base.dwg [SWS02]  
 Project No: 05-10-E397 CAPITAL IMPROVEMENT PROJECT  
**47TH STREET SOUTH SWS PLAN & PROFILE**  
 SWS Line 1 - Sta. 8+50.00 to Sta. 13+50.00  
 47TH STREET SOUTH - MERIDIAN AVENUE TO SENECA STREET

**Baughman Company, P.A.**  
 315 Ellis St. Wichita, KS 67211 P 316-262-1271 F 316-262-0149  
 TYPING | SURVEYING | PLANNING | LANDSCAPE ARCHITECTURE

August 2010  
 SHEET  
 29  
 OF  
 129