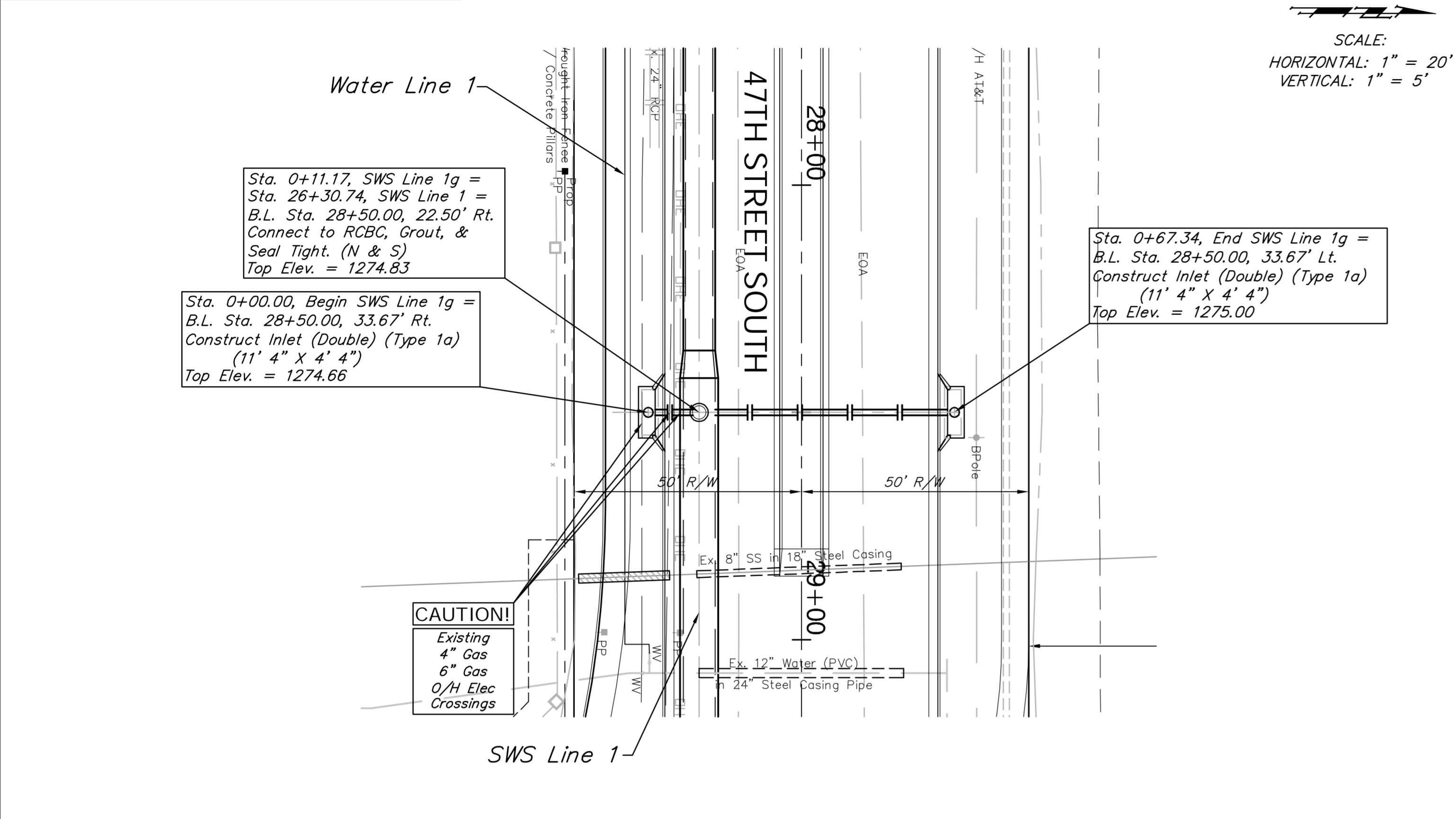
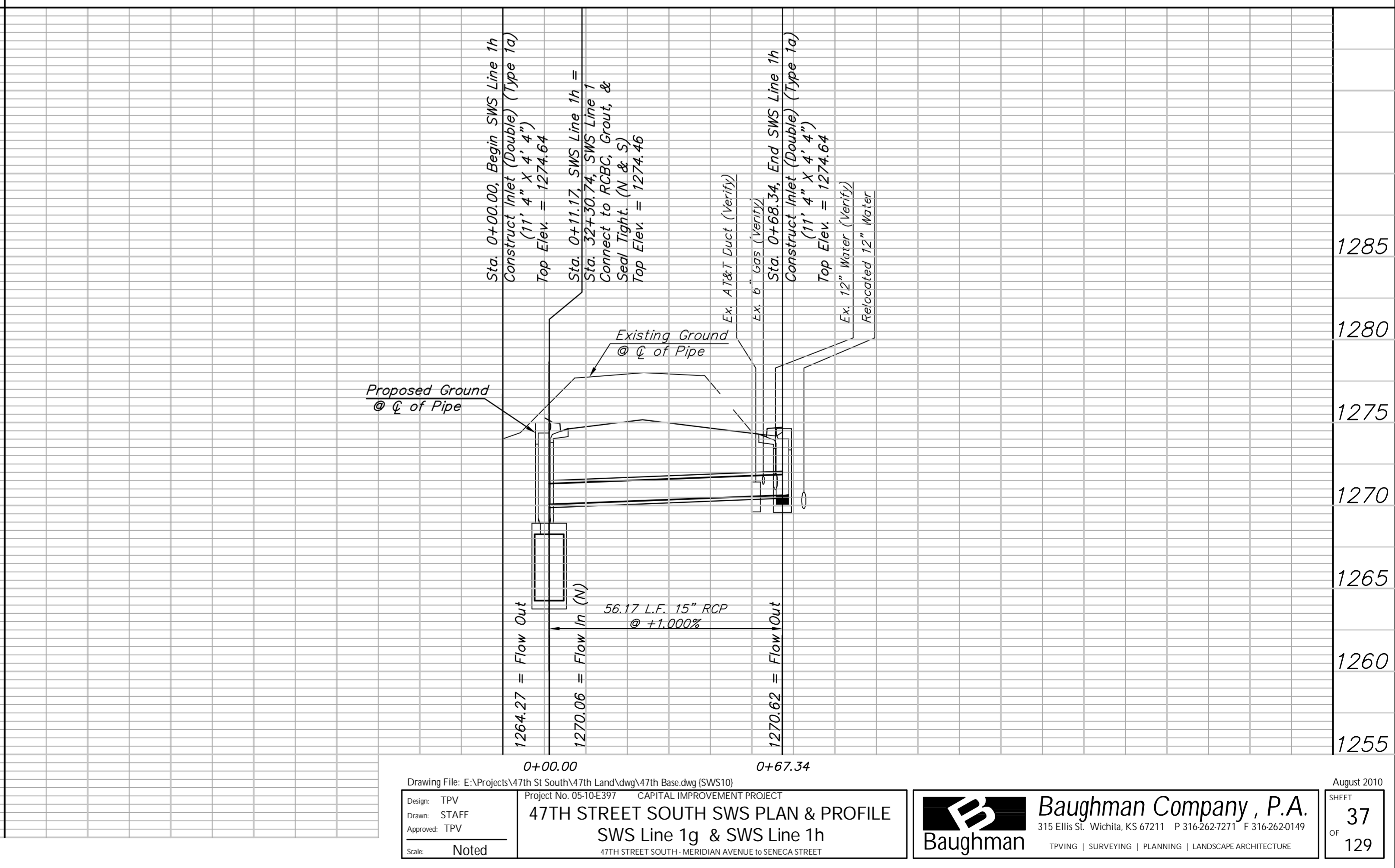
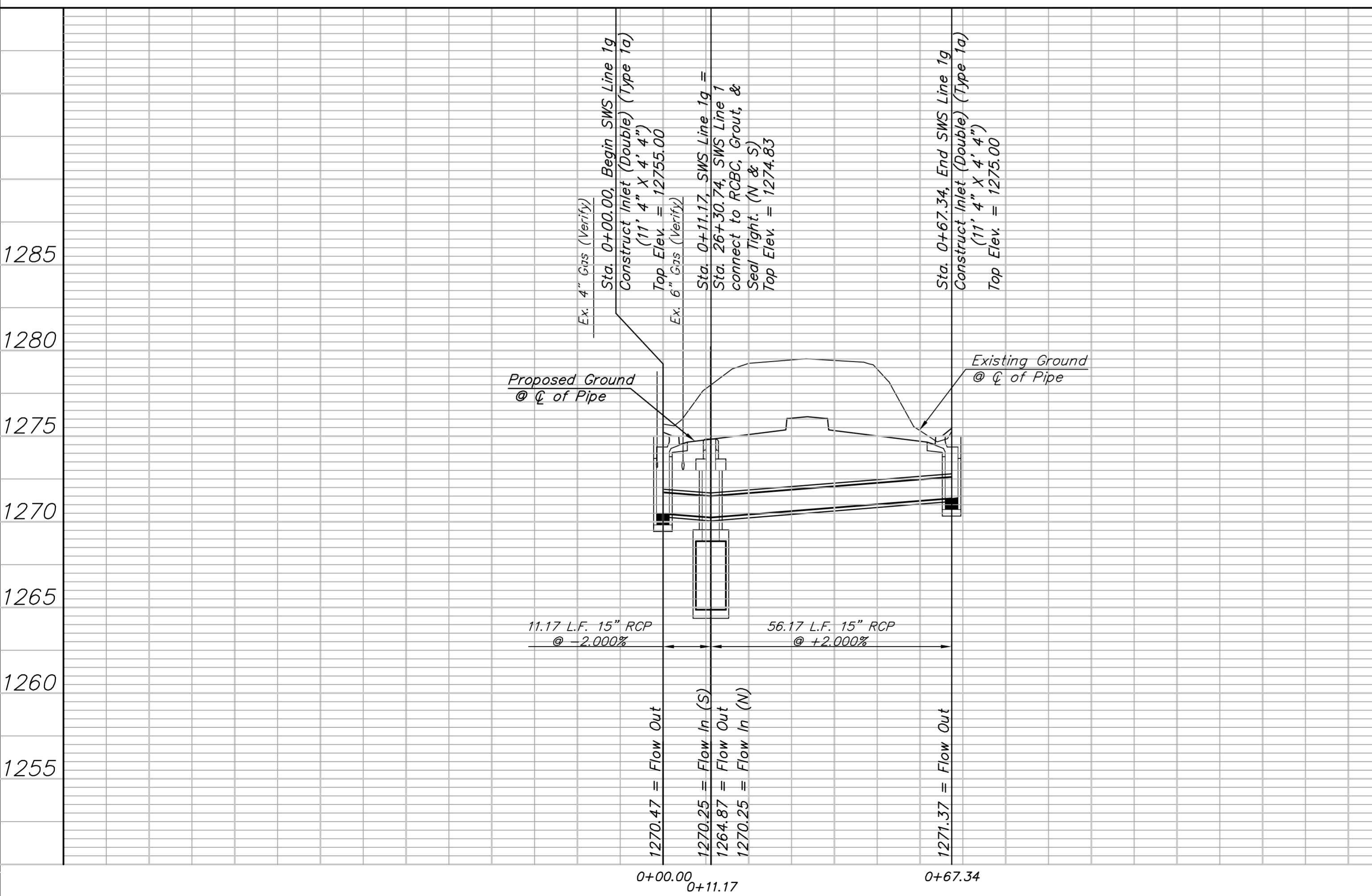
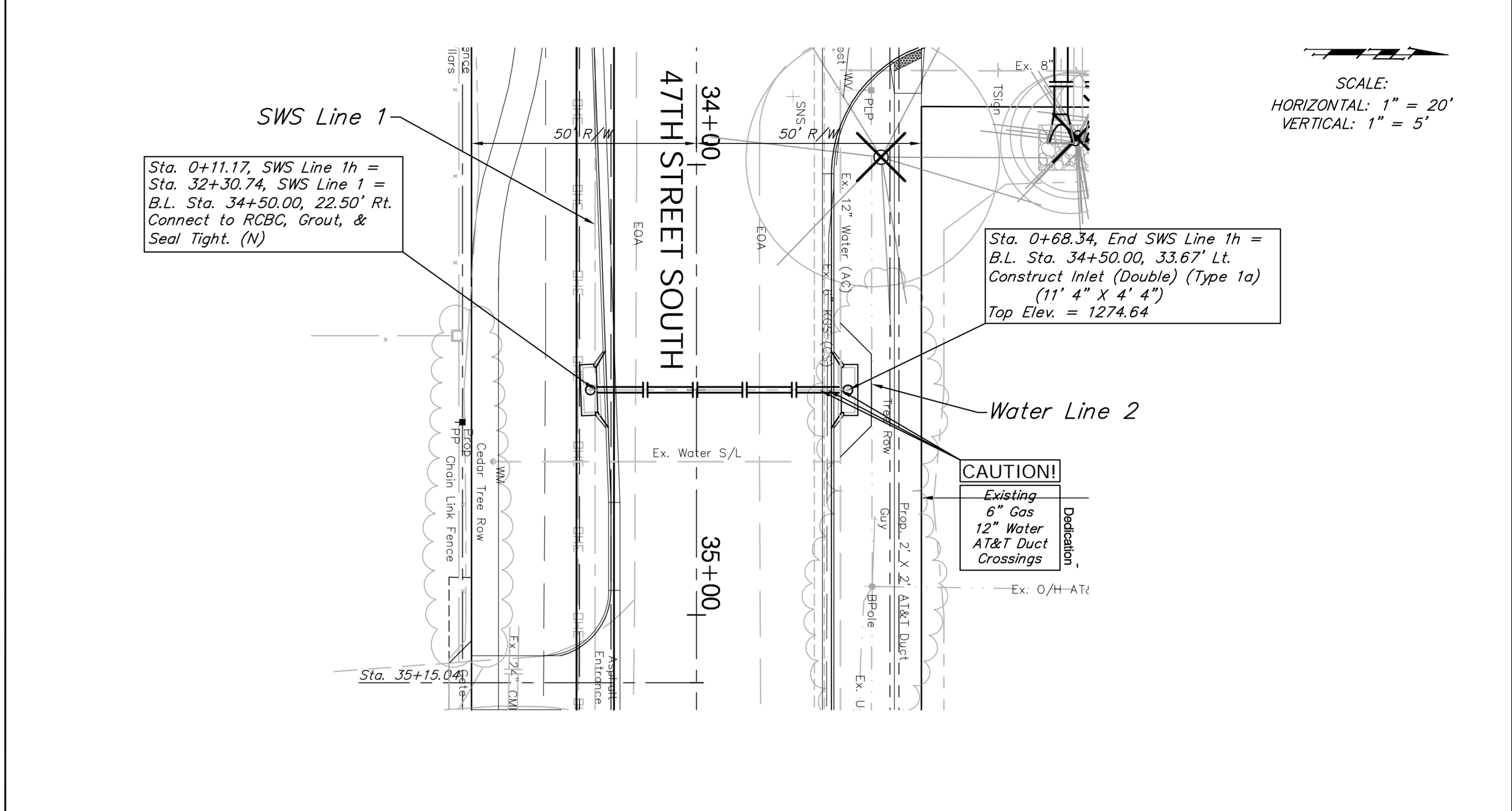


BENCHMARK:  
 BM #3 - "U" Cut in the Concrete Base of Metal Fence Post  
 28' West of the Fourth Concrete Pillar West of the  
 South Lakes Park Entrance  
 Sta. 25+86, 54' Rt.  
 Elev. = 1277.92 (MSL)



BENCHMARK:  
 BM #4 - City of Wichita Disc Located in the Northeast Corner  
 of the Intersection of 47th Street South and  
 Clarence Avenue  
 Sta. 36+56, 54' Lt.  
 Elev. = 1272.50 (MSL)



FHWA REGION NO.	STATE	PROJECT NO.	FISCAL YEAR	SHEET NO.	TOTAL SHEETS
7	KANSAS	87 N-0394-01	2010	37	129