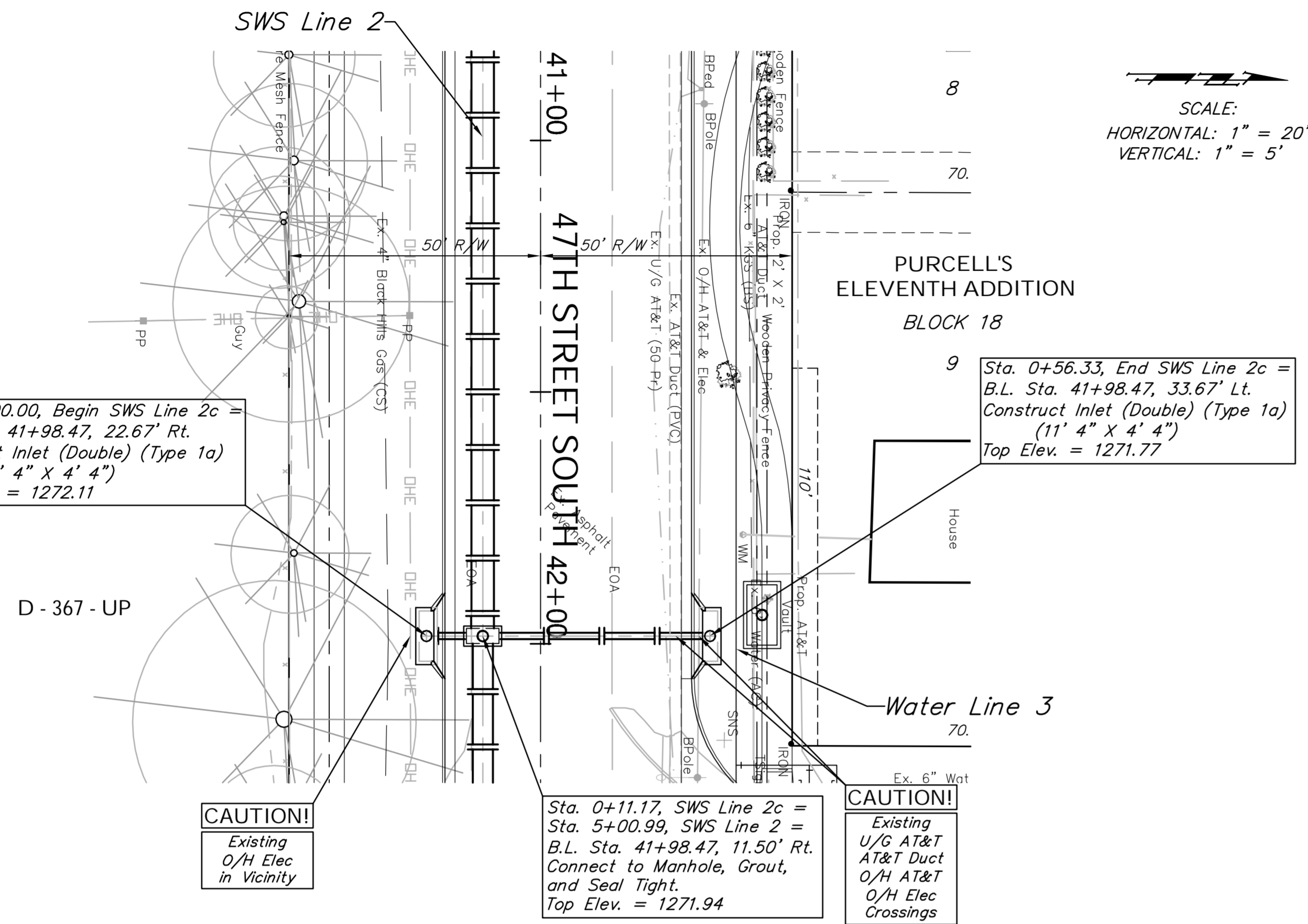
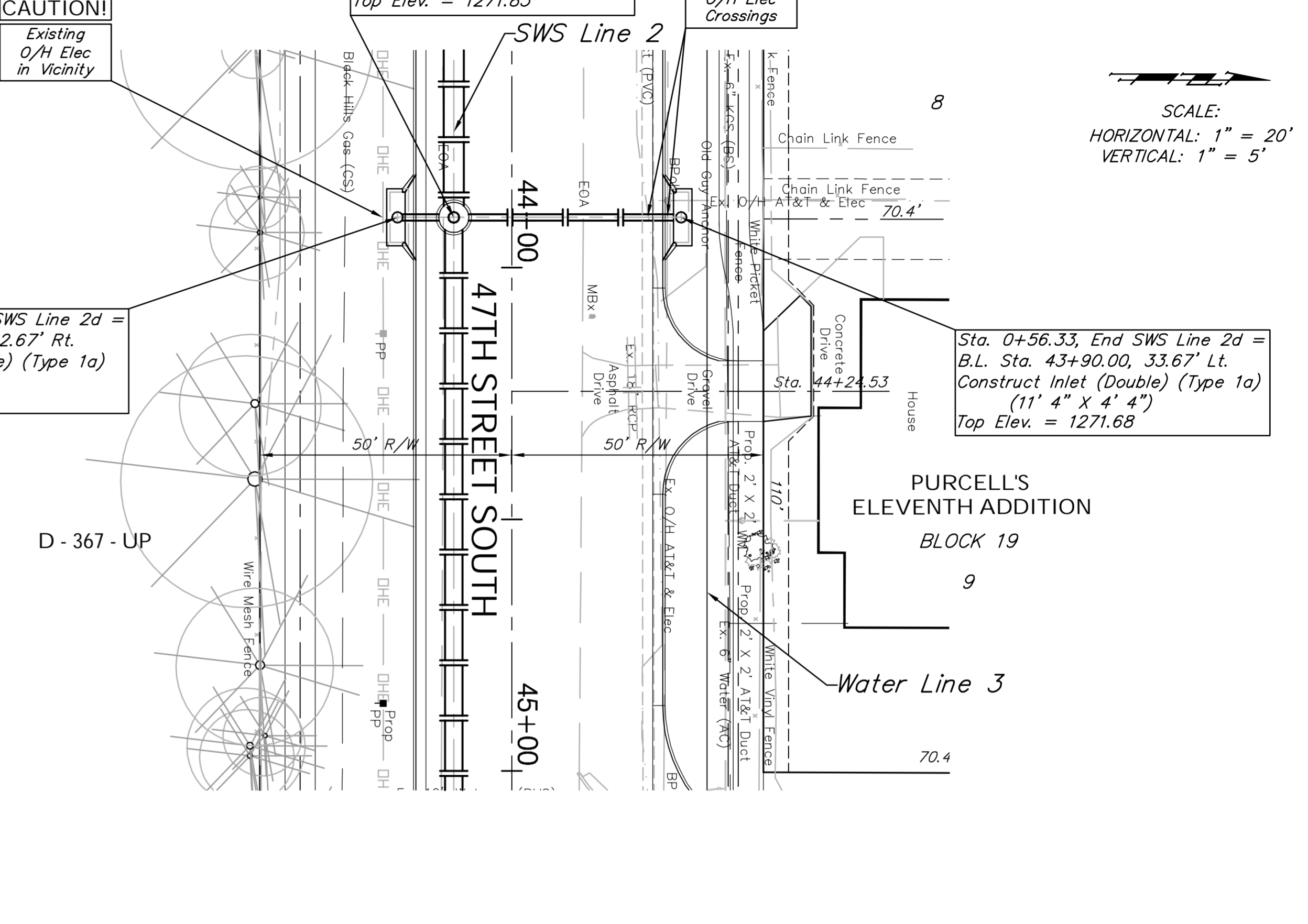


BENCHMARK:
 BM #5 - \square Cut into Top of Curb in the Northwest Corner of the Intersection of 47th Street South and Vine Avenue
 Sta. 45+17, 66' Lt.
 Elev. = 1272.89 (MSL)



BENCHMARK:
 BM #5 - \square Cut into Top of Curb in the Northwest Corner of the Intersection of 47th Street South and Vine Avenue
 Sta. 45+17, 66' Lt.
 Elev. = 1272.89 (MSL)



FHWA REGION NO.	STATE	PROJECT NO.	FISCAL YEAR	SHEET NO.	TOTAL SHEETS
7	KANSAS	87 N-0394-01	2010	43	129



Drawing File: E:\Projects\47th St South\47th Land\dwg\47th Base.dwg (SWS16)
 Project No. 05-10-E397 CAPITAL IMPROVEMENT PROJECT
 47TH STREET SOUTH SWS PLAN & PROFILE
 SWS Line 2c & SWS Line 2d
 47TH STREET SOUTH, MERIDIAN AVENUE TO SENECA STREET
 Scale: Noted

Baughman Company, P.A.
 315 Ellis St., Wichita, KS 67211 P 316.262.1271 F 316.262.0149
 TPVING | SURVEYING | PLANNING | LANDSCAPE ARCHITECTURE

August 2010
 SHEET 43 OF 129