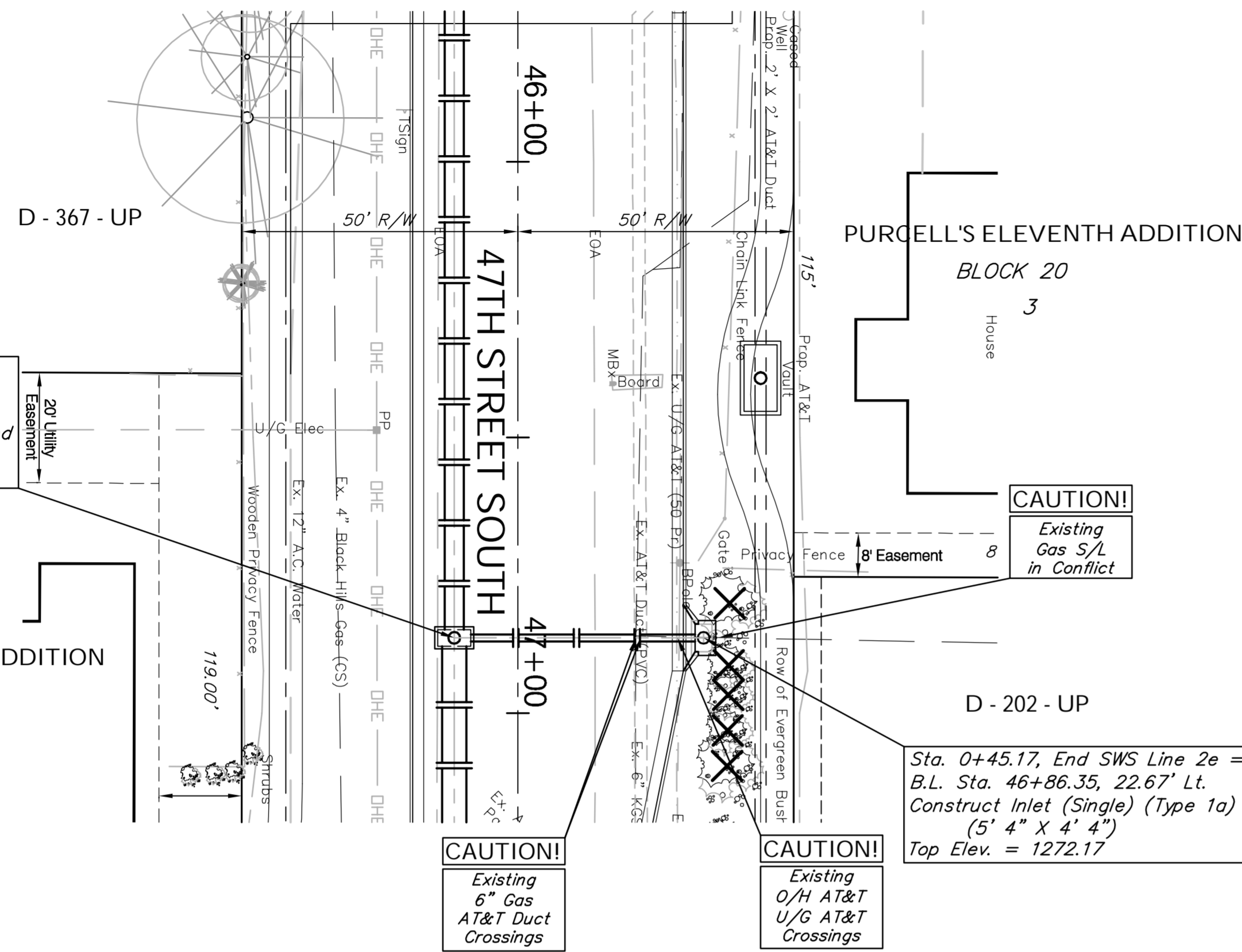


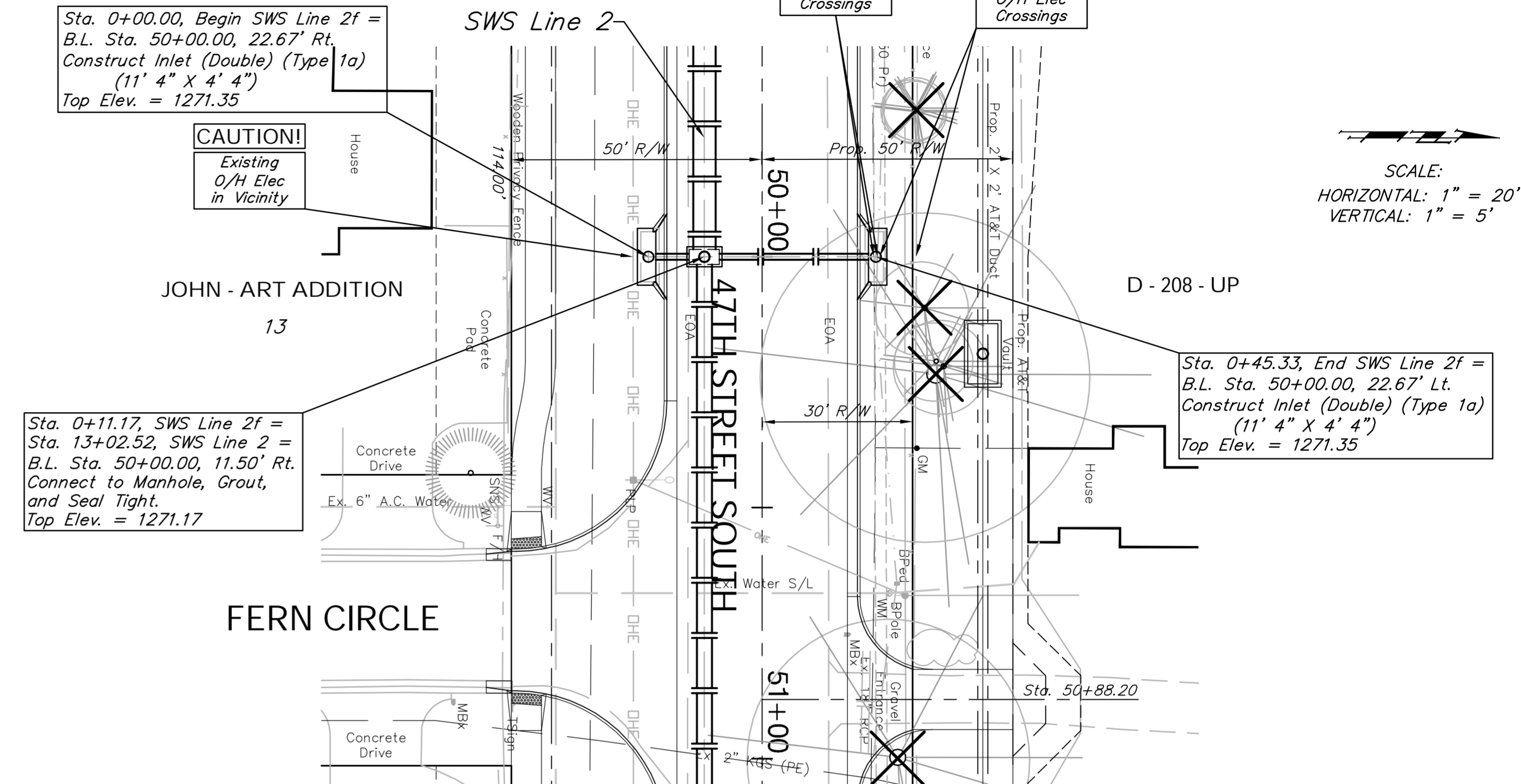
BENCHMARK:
 BM #5 - Cut into Top of Curb in the Northwest Corner of the Intersection of 47th Street South and Vine Avenue
 Sta. 45+17, 66' Lt.
 Elev. = 1272.89 (MSL)



Sta. 0+00.00, SWS Line 2e =
 Sta. 9+88.86, SWS Line 2 =
 B.L. Sta. 46+86.35, 11.50' Rt.
 Connect to Manhole, Grout, and
 Seal Tight.
 Top Elev. = 1272.35

Sta. 0+45.17, End SWS Line 2e =
 B.L. Sta. 46+86.35, 22.67' Lt.
 Construct Inlet (Single) (Type 1a)
 (5' 4" X 4' 4")
 Top Elev. = 1272.17

BENCHMARK:
 BM #6 - Cut into Top of Curb in the Southwest Corner of the Intersection of 47th Street South and Elizabeth Circle
 Sta. 53+44, 63' Rt.
 Elev. = 1273.40 (MSL)

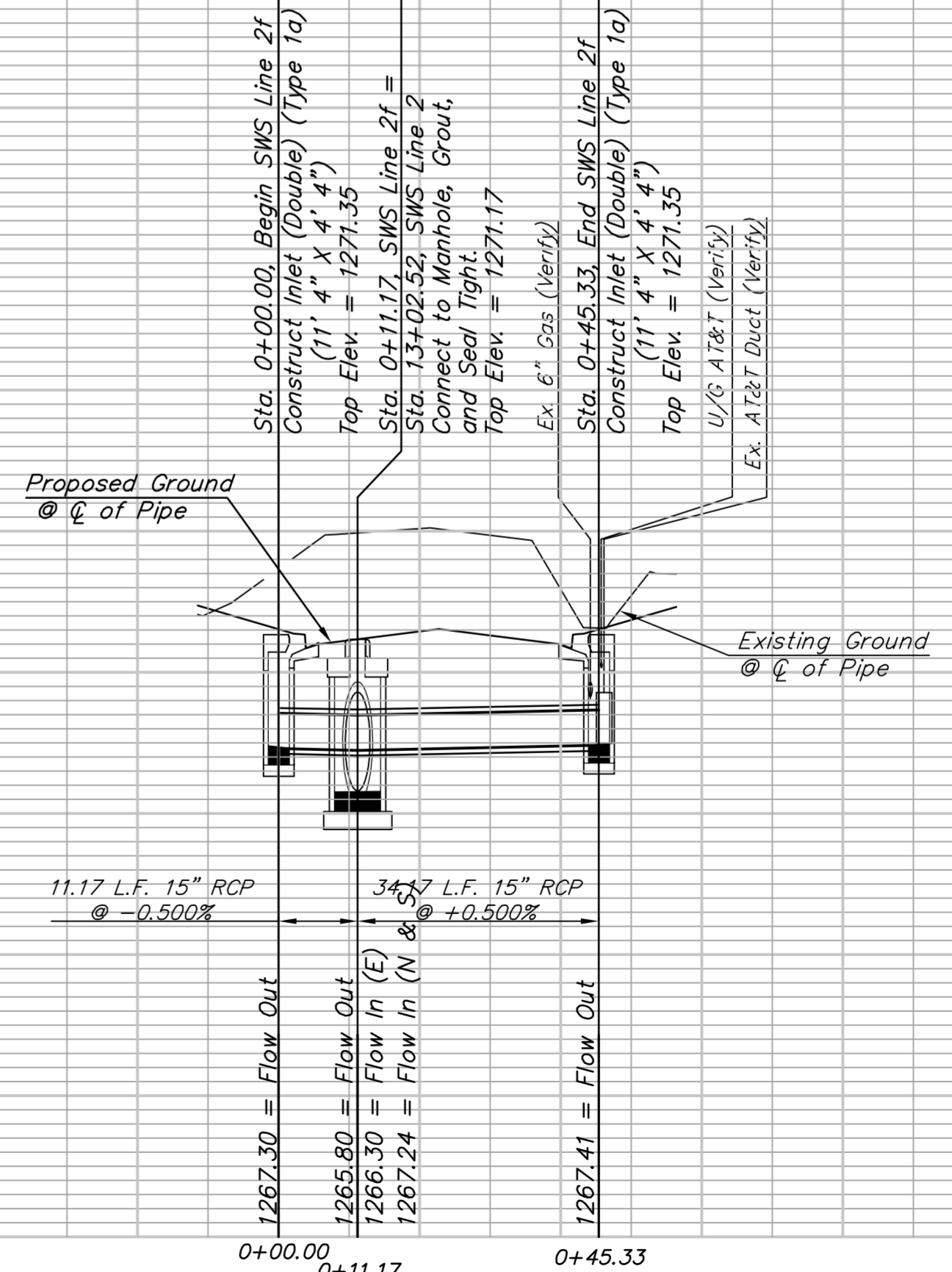


Sta. 0+11.17, SWS Line 2f =
 Sta. 13+02.52, SWS Line 2 =
 B.L. Sta. 50+00.00, 11.50' Rt.
 Connect to Manhole, Grout,
 and Seal Tight.
 Top Elev. = 1271.17

Sta. 0+45.33, End SWS Line 2f =
 B.L. Sta. 50+00.00, 22.67' Lt.
 Construct Inlet (Double) (Type 1a)
 (11' 4" X 4' 4")
 Top Elev. = 1271.35

SCALE:
 HORIZONTAL: 1" = 20'
 VERTICAL: 1" = 5'

FHWA REGION NO.	STATE	PROJECT NO.	FISCAL YEAR	SHEET NO.	TOTAL SHEETS
7	KANSAS	87 N-0394-01	2010	44	129



Design: TPV
 Drawn: TPV
 Approved: TPV
 Scale: Noted

47TH STREET SOUTH SWS PLAN & PROFILE
 SWS Line 2f & SWS Line 2e
 47TH STREET SOUTH - MERIDIAN AVENUE TO SENECA STREET