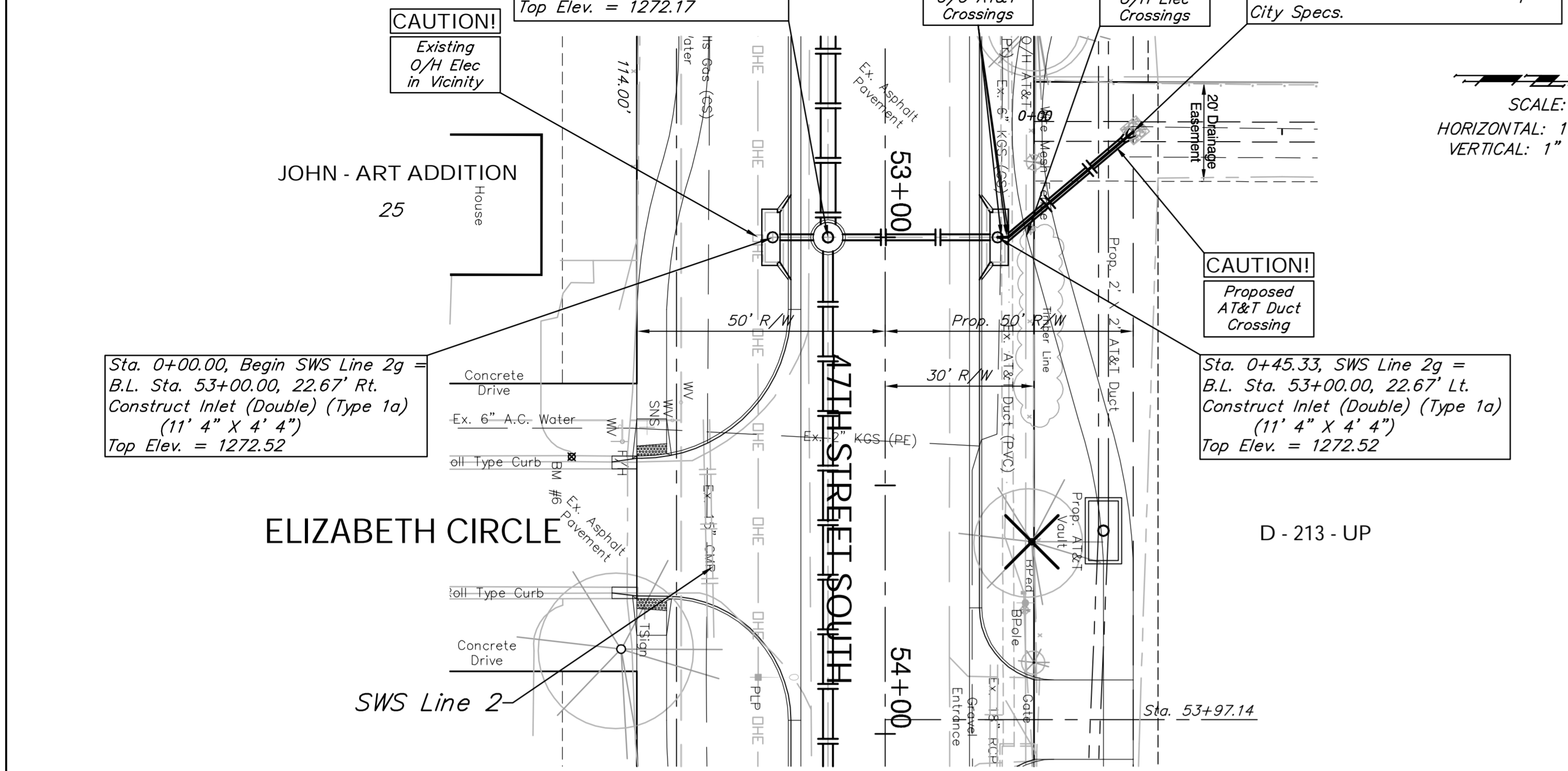


FHWA REGION NO.	STATE	PROJECT NO.	FISCAL YEAR	SHEET NO.	TOTAL SHEETS
7	KANSAS	87 N-0394-01	2010	45	129

**BENCHMARK:**  
 BM #6 - Cut into Top of Curb in the Southwest Corner of the Intersection of 47th Street South and Elizabeth Circle  
 Sta. 53+44, 63' Rt.  
 Elev. = 1273.40 (MSL)

Sta. 0+11.17, SWS Line 2g =  
 Sta. 16+02.52, SWS Line 2 =  
 B.L. Sta. 53+00.00, 11.50' Rt.  
 Connect to Manhole, Grout,  
 and Seal Tight.  
 Top Elev. = 1272.17

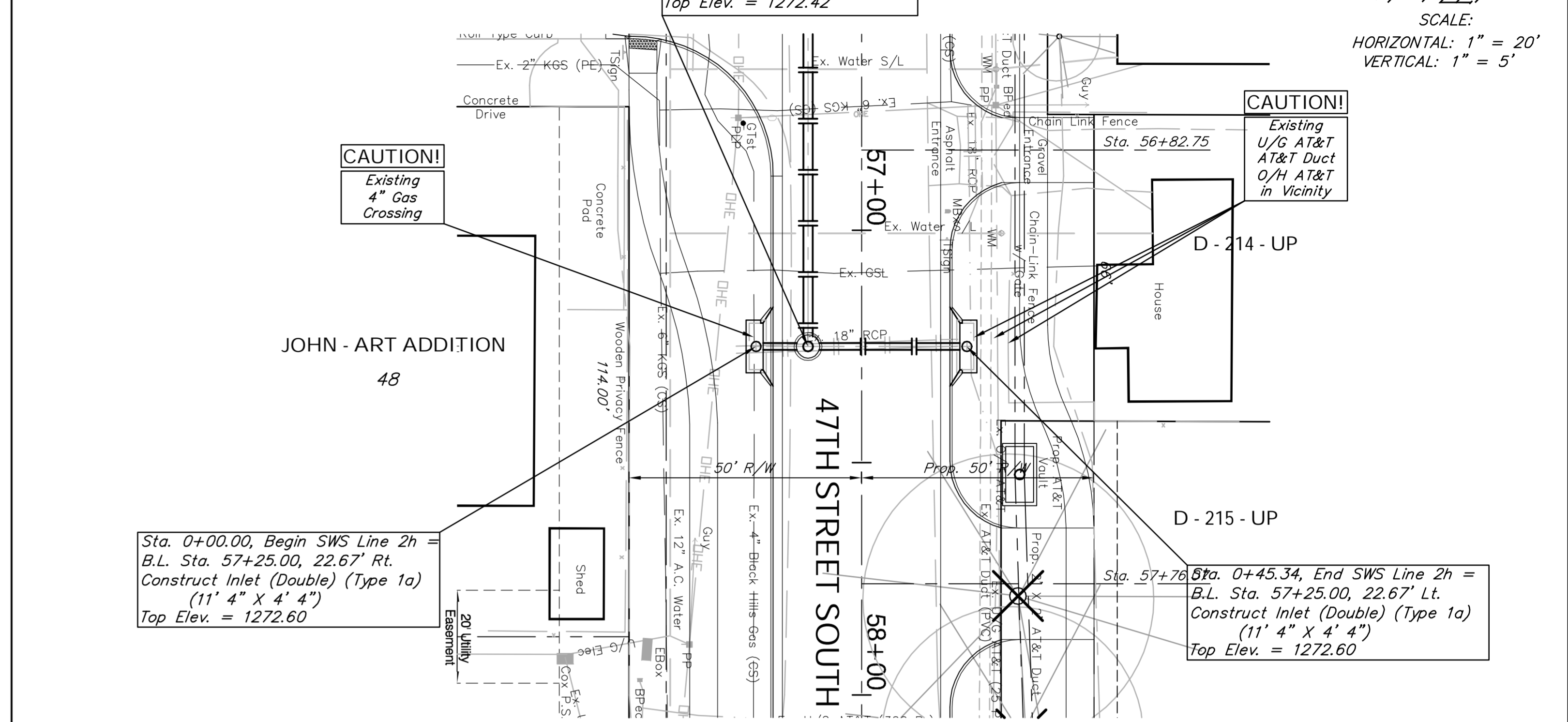
Sta. 0+80.46, End SWS Line 2g =  
 B.L. Sta. 52+78.71, 50.00' Lt.  
 Install 1-15" RCP End Section and  
 5.3 S.Y. Light Stone Rip Rap with  
 6" Filter Course and Tow Wall per  
 City Specs.



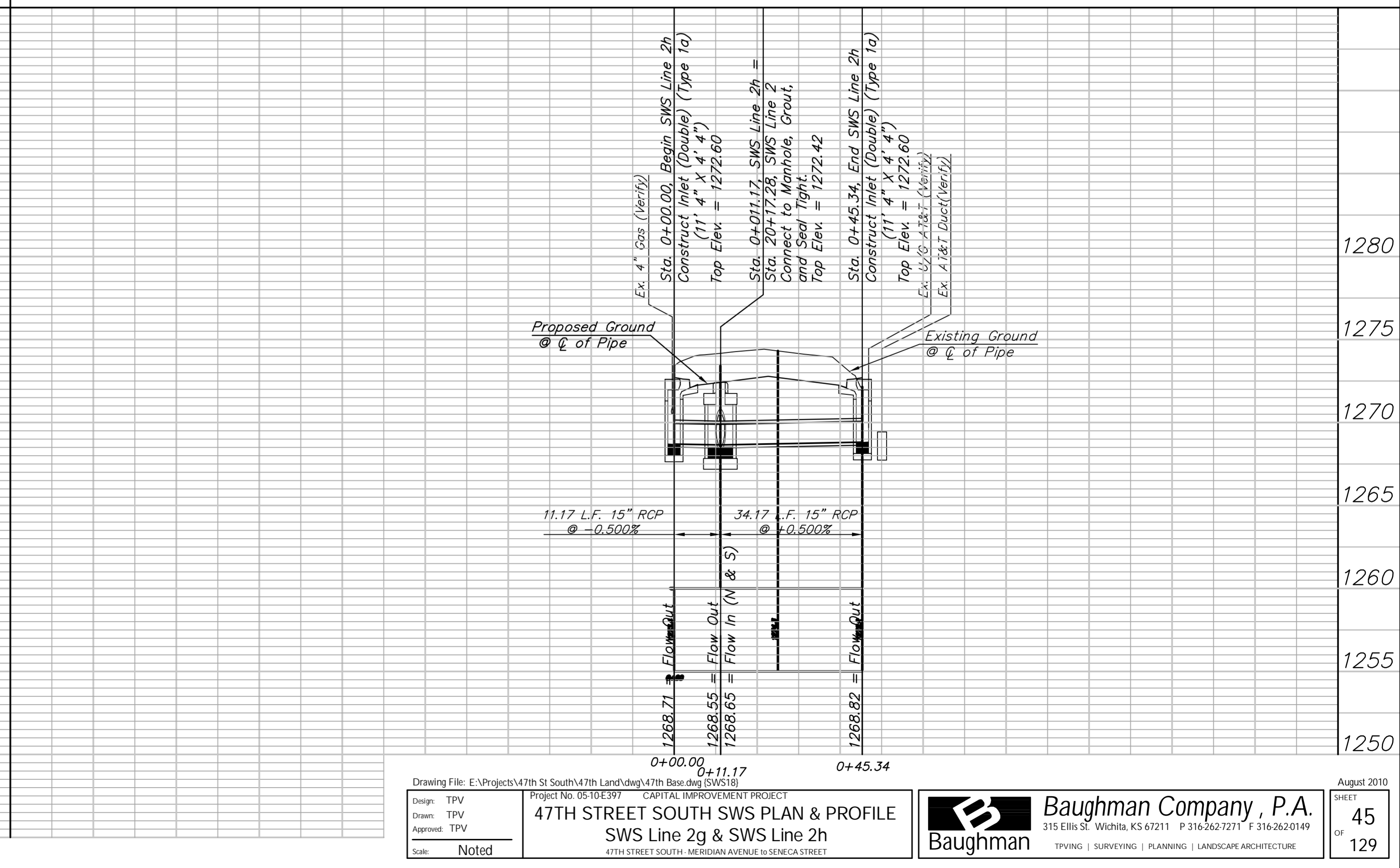
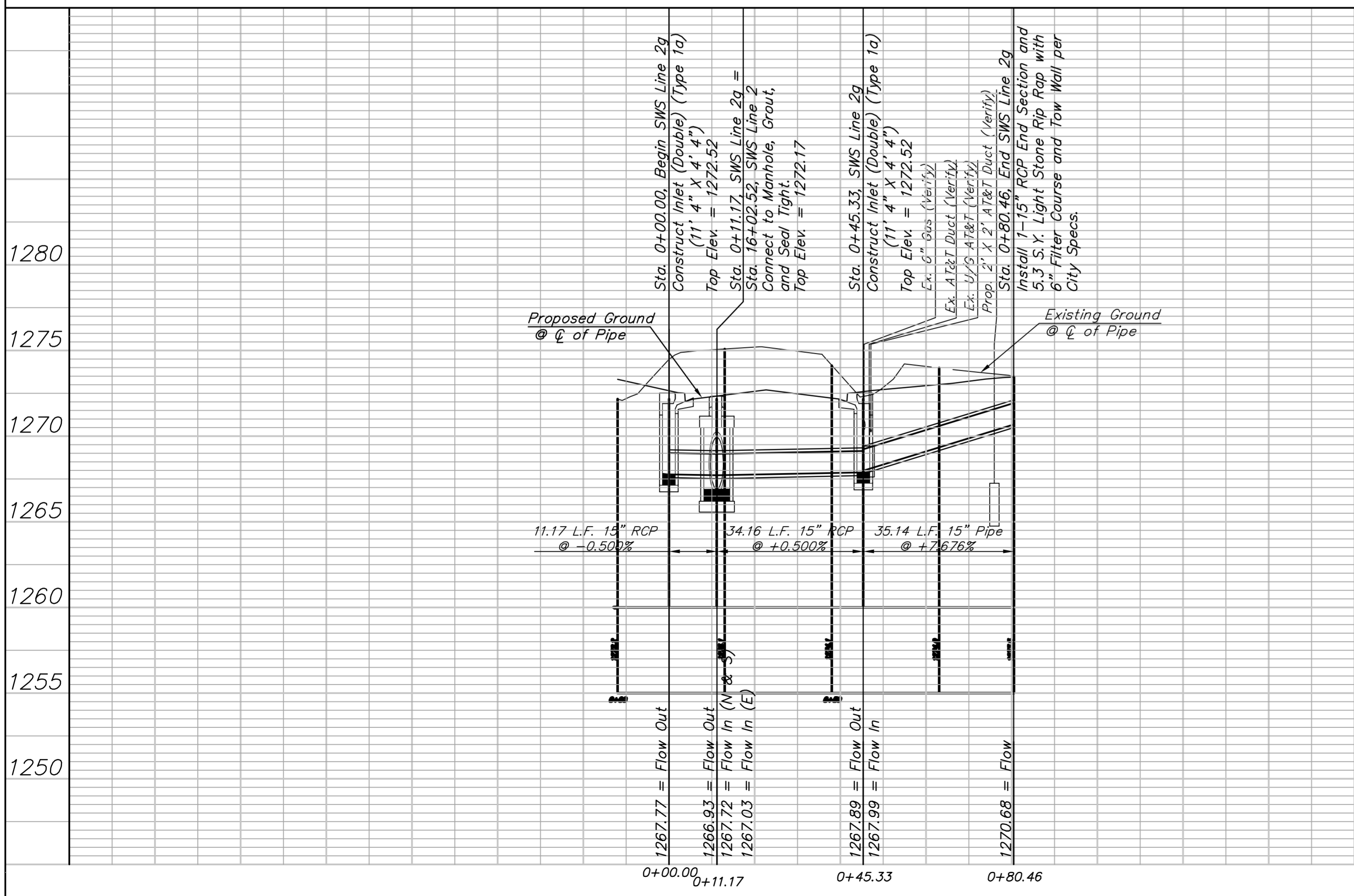
SCALE:  
 HORIZONTAL: 1" = 20'  
 VERTICAL: 1" = 5'

**BENCHMARK:**  
 BM #6 - Cut into Top of Curb in the Southwest Corner of the Intersection of 47th Street South and Elizabeth Circle  
 Sta. 53+44, 63' Rt.  
 Elev. = 1273.40 (MSL)

Sta. 0+11.17, SWS Line 2h =  
 Sta. 20+17.28, SWS Line 2 =  
 B.L. Sta. 57+25.00, 11.50' Rt.  
 Connect to Manhole, Grout,  
 and Seal Tight.  
 Top Elev. = 1272.42



SCALE:  
 HORIZONTAL: 1" = 20'  
 VERTICAL: 1" = 5'



Drawing File: E:\Projects\47th St South\47th Land\dwg\47th Base.dwg (SWS2g)  
 Project No: 05-10-E397 CAPITAL IMPROVEMENT PROJECT  
**47TH STREET SOUTH SWS PLAN & PROFILE**  
 SWS Line 2g & SWS Line 2h  
 47TH STREET SOUTH, MERIDIAN AVENUE TO SENECA STREET

**Baughman Company, P.A.**  
 315 Ellis St., Wichita, KS 67211 P 316.262.1271 F 316.262.0149  
 TPVING | SURVEYING | PLANNING | LANDSCAPE ARCHITECTURE

August 2010  
 SHEET  
**45**  
 OF  
**129**