

BENCHMARK:
 BM #1 - City of Wichita Disc Located in the Northeast Corner
 of the Intersection of Meridian and 47th Street South
 Sta. 10+29, 43' Lt.
 Elev. = 1279.18 (MSL)

Sta. 0+00.00, Begin SWS Line 3 =
 B.L. Sta. 95+69.57, 47.50' Lt.
 Install 1-15" RCP End Section and
 5.3 S.Y. Light Stone Rip Rap with
 6" Filter Course and Tow Wall per
 City Specs.

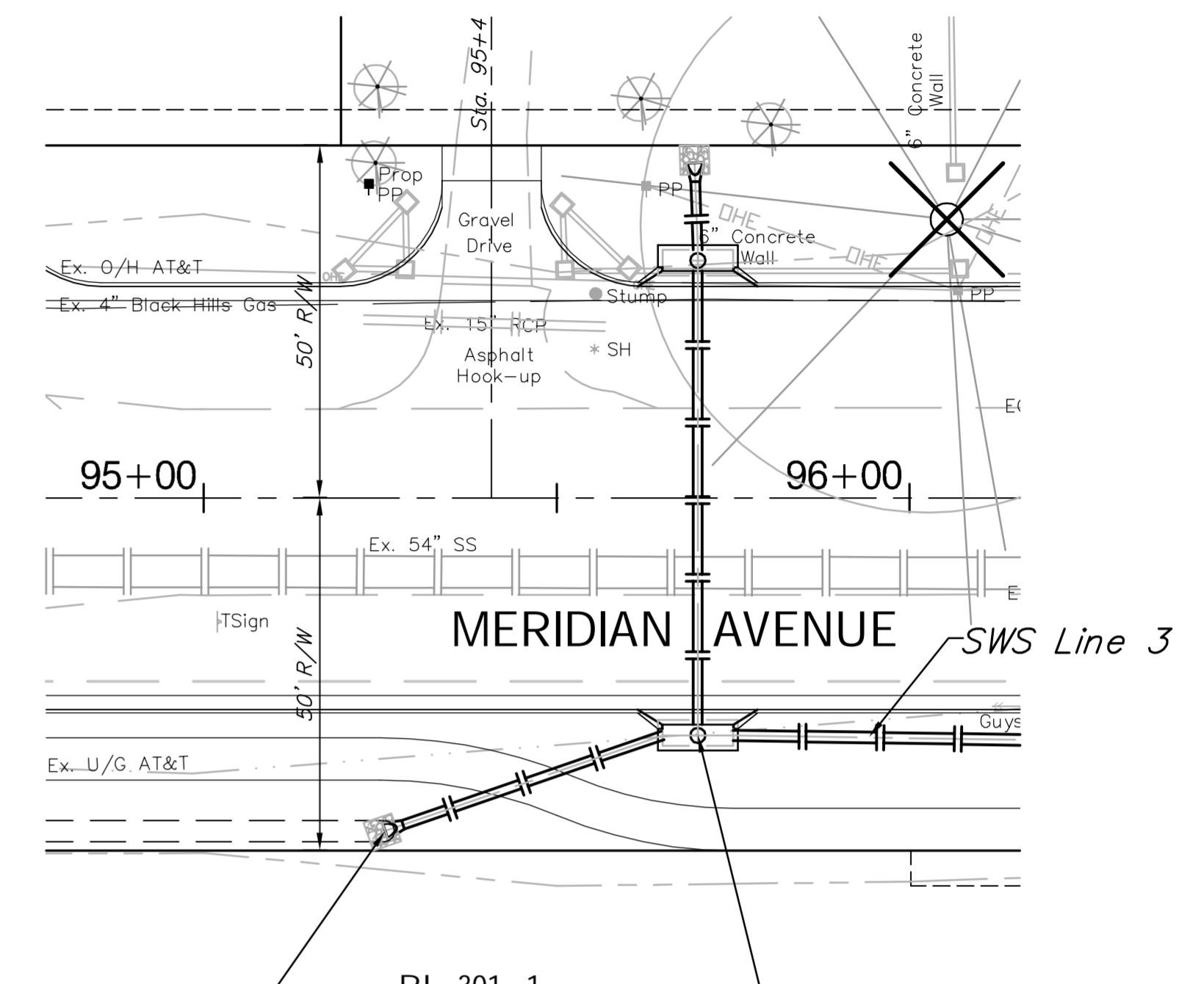
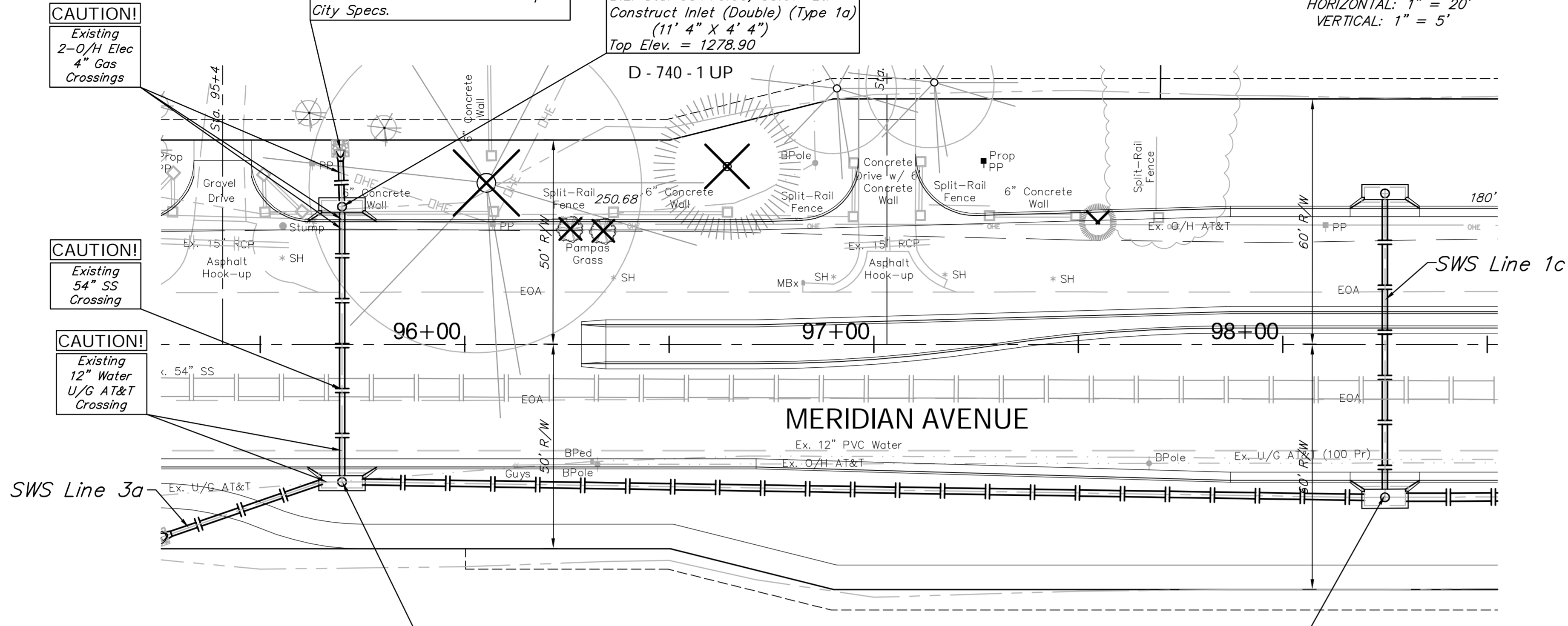
Sta. 0+13.84, SWS Line 3 =
 B.L. Sta. 95+70.00, 33.67' Lt.
 Construct Inlet (Double) (Type 1a)
 (11' 4" X 4' 4")
 Top Elev. = 1278.90

Sta. 0+81.17, SWS Line 3 =
 Sta. 0+46.57, SWS Line 3a =
 B.L. Sta. 95+70.00, 33.67' Rt.
 Construct Inlet (Double) (Type 1a)
 (11' 4" X 4' 4")
 Top Elev. = 1278.90

Sta. 3+36.20, SWS Line 3 =
 Sta. 0+73.84, SWS Line 1c =
 B.L. Sta. 98+25.00, 36.92' Rt.
 Connect to Inlet, Grout, and
 Seal Tight.
 Top Elev. = 1277.75

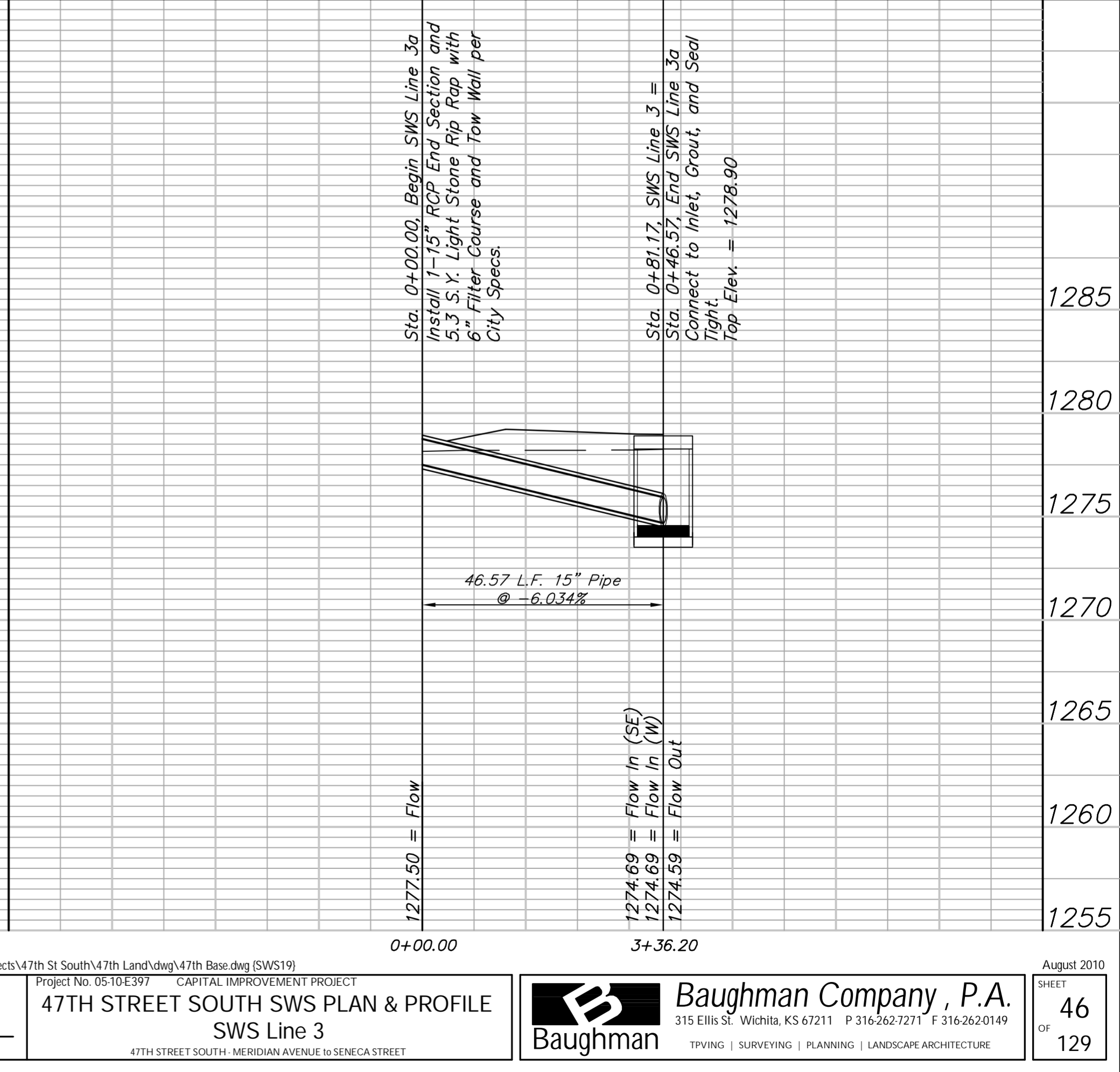
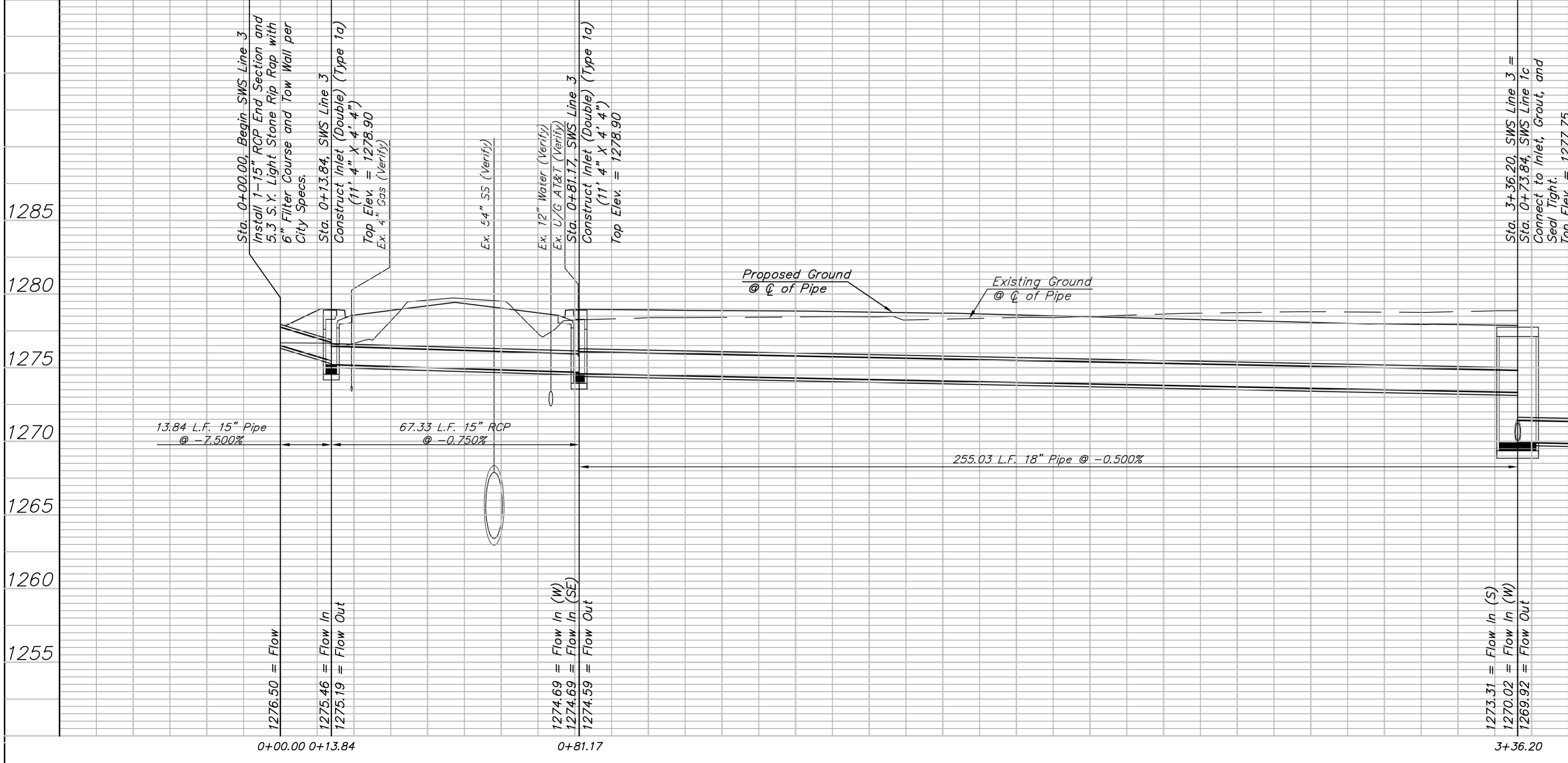
BENCHMARK:
 BM #1 - City of Wichita Disc Located in the Northeast Corner
 of the Intersection of Meridian and 47th Street South
 Sta. 10+29, 43' Lt.
 Elev. = 1279.18 (MSL)

SCALE:
 HORIZONTAL: 1" = 20'
 VERTICAL: 1" = 5'



Sta. 0+00.00, Begin SWS Line 3a =
 B.L. Sta. 95+25.70, 47.22' Rt.
 Install 1-15" RCP End Section and
 5.3 S.Y. Light Stone Rip Rap with
 6" Filter Course and Tow Wall per
 City Specs.

Sta. 0+81.17, SWS Line 3 =
 Sta. 0+46.57, End SWS Line 3a =
 B.L. Sta. 95+70.00, 33.67' Rt.
 Connect to Inlet, Grout, and Seal
 Tight.
 Top Elev. = 1278.90



Drawing File: E:\Projects\47th St South\47th Land\dwg\47th Base.dwg [SWS19]
 Project No. 05-10-E397 CAPITAL IMPROVEMENT PROJECT
47TH STREET SOUTH SWS PLAN & PROFILE
 SWS Line 3
 47TH STREET SOUTH- MERIDIAN AVENUE TO SENECA STREET
 Design: TPV
 Drawn: STAFF
 Approved: TPV
 Scale: Noted

Baughman Company, P.A.
 315 Ellis St., Wichita, KS 67211 P 316.262.1271 F 316.262.0149
 TPVING | SURVEYING | PLANNING | LANDSCAPE ARCHITECTURE

August 2010
 SHEET
46
 OF
129