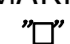
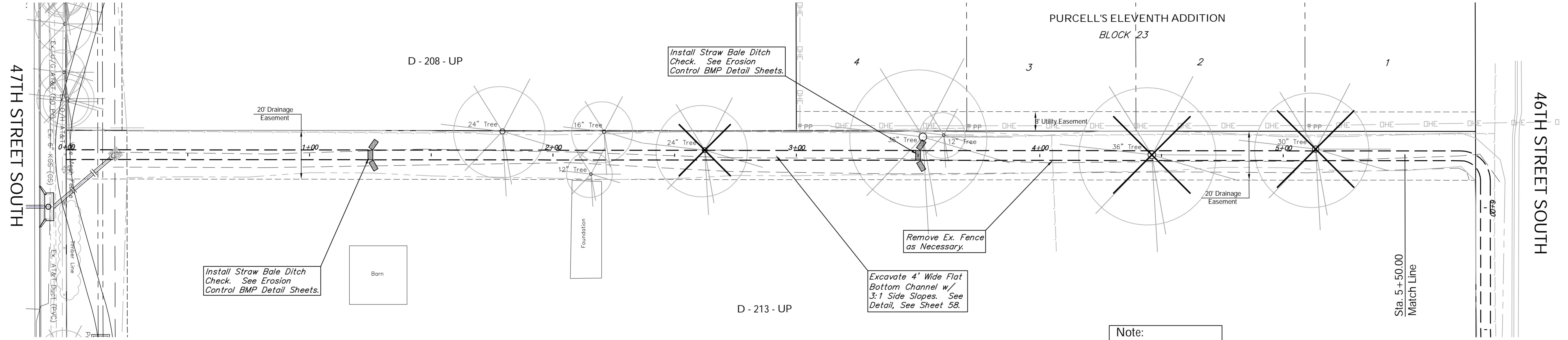




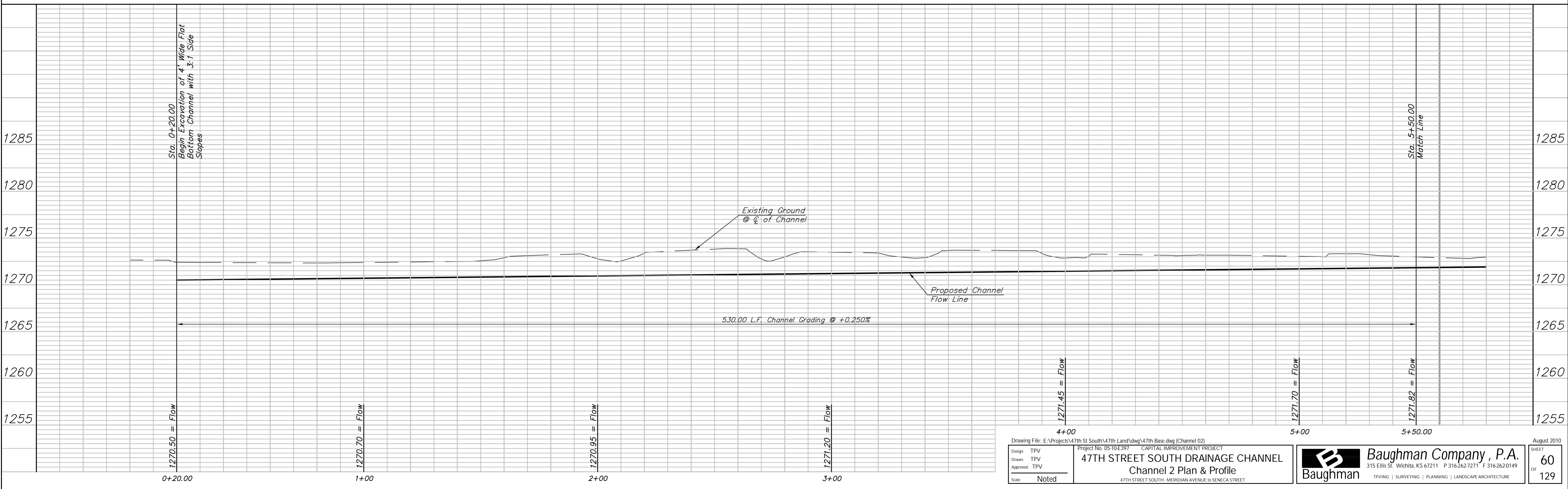
BENCHMARK:  
 BM #6 -  Cut into Top of Curb in the Southwest Corner of the Intersection of 47th Street South and Elizabeth Circle  
 Sta. 53+44, 63' Rt.  
 Elev. = 1273.40 (MSL)

FHWA REGION NO.	STATE	PROJECT NO.	FISCAL YEAR	SHEET NO.	TOTAL SHEETS
7	KANSAS	87 N-0394-01	2010	60	129

SCALE:  
 HORIZONTAL: 1" = 20'  
 VERTICAL: 1" = 5'



Note:  
 Trees/Shrubs to be removed are marked thus:  
 



Drawing File: E:\Projects\47th St South\47th Land\dwg\47th Base.dwg (Channel 02)  
 Project No: 05-10-E-397 CAPITAL IMPROVEMENT PROJECT  
**47TH STREET SOUTH DRAINAGE CHANNEL**  
 Channel 2 Plan & Profile  
 47TH STREET SOUTH - MERIDIAN AVENUE TO SENECA STREET

**Baughman Company, P.A.**  
 315 Ellis St. Wichita, KS 67211 P 316-262-1271 F 316-262-0149  
 TPVING | SURVEYING | PLANNING | LANDSCAPE ARCHITECTURE

August 2010  
 SHEET  
**60**  
 OF  
**129**