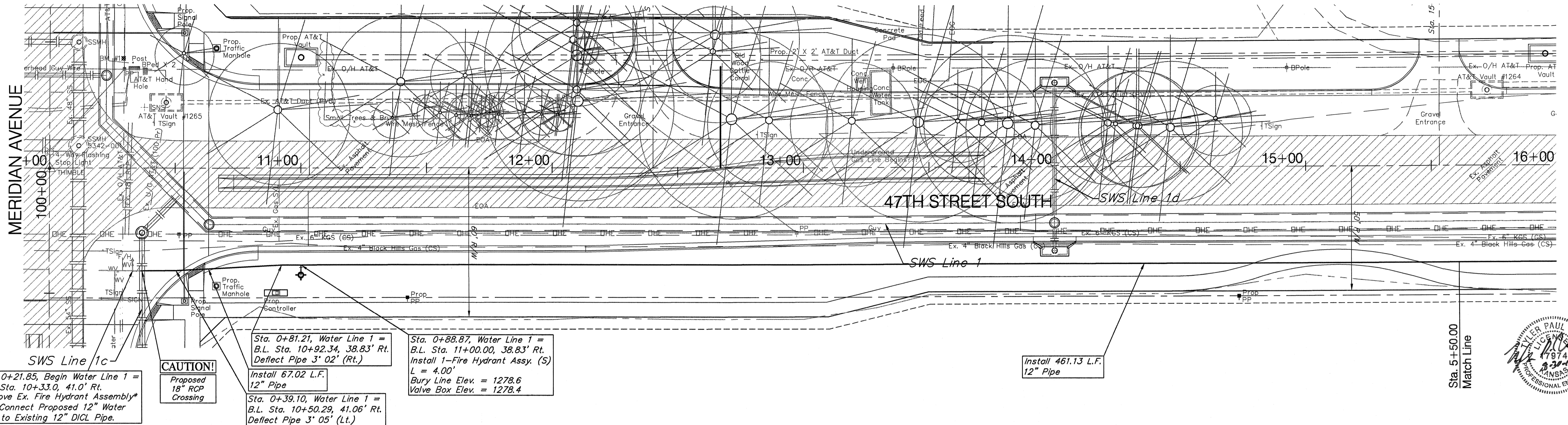


BENCHMARK:
 BM #1 - City of Wichita Disc Located in the Northeast Corner
 of the Intersection of Meridian and 47th Street South
 Sta. 10+29, 43' Lt.
 Elev. = 1279.18 (MSL)

Prior to Beginning Construction on the Water Line,
 the Contractor Shall Excavate the Ex. 12" Water
 Line to Verify Size and Location. The Contractor
 Shall Report Back the the TPV So That Any
 Necessary Modifications Can Be Made. This Work
 Shall be Considered SUBSIDIARY to the Water Line
 Installation.

* The Contractor Shall Salvage the Ex. Fire Hydrant
 Assembly to the City of Wichita Water Department.
 Cost to SUBSIDIARY to the Lump Sum Bid Item
 "Transportation of Salvage Material".

SCALE:
 HORIZONTAL: 1" = 20'
 VERTICAL: 1" = 5'



Sta. 0+21.85, Begin Water Line 1 =
 B.L. Sta. 10+33.0, 41.0' Rt.
 Remove Ex. Fire Hydrant Assembly*
 and Connect Proposed 12" Water
 Line to Existing 12" DI CL Pipe.

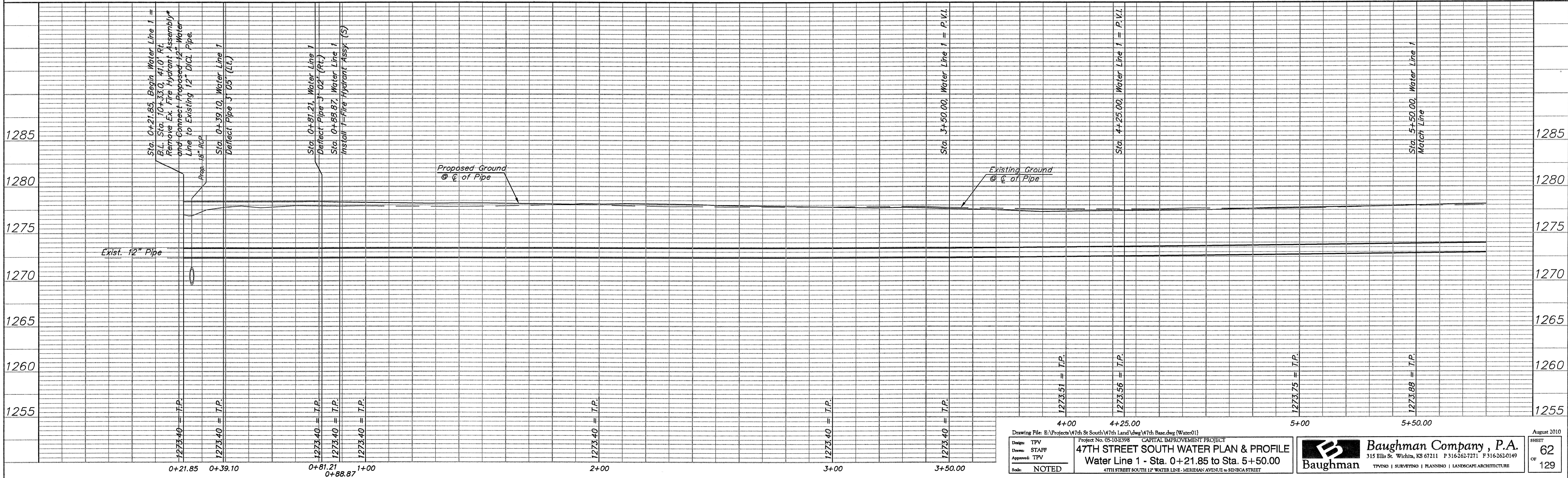
CAUTION!
 Proposed
 18" RCP
 Crossing

Sta. 0+39.10, Water Line 1 =
 B.L. Sta. 10+50.29, 41.06' Rt.
 Deflect Pipe 3' 05" (Lt.)
 Install 67.02 L.F.
 12" Pipe

Sta. 0+81.21, Water Line 1 =
 B.L. Sta. 10+92.34, 38.83' Rt.
 Deflect Pipe 3' 02" (Rt.)
 Install 1-Fire Hydrant Assy. (S)
 L = 4.00'
 Bury Line Elev. = 1278.6
 Valve Box Elev. = 1278.4

Install 461.13 L.F.
 12" Pipe

Sta. 5+50.00
 Match Line



Drawing File: E:\Projects\47th St South\47th Land\dwg\47th Base.dwg (Water01) Project No. 05-10-E398 CAPITAL IMPROVEMENT PROJECT 47TH STREET SOUTH WATER PLAN & PROFILE Water Line 1 - Sta. 0+21.85 to Sta. 5+50.00 47TH STREET SOUTH 12" WATER LINE - MERIDIAN AVENUE to 9th STREET		Baughman Company, P.A. 315 Ellis St. Wichita, KS 67211 P 316-262-7271 F 316-262-0149 TPVNO SURVYNO PLANNING LANDSCAPE ARCHITECTURE	August 2010 SHEET 62 OF 129
Design: TPV Drawn: STAFF Approved: TPV Scale: NOTED			