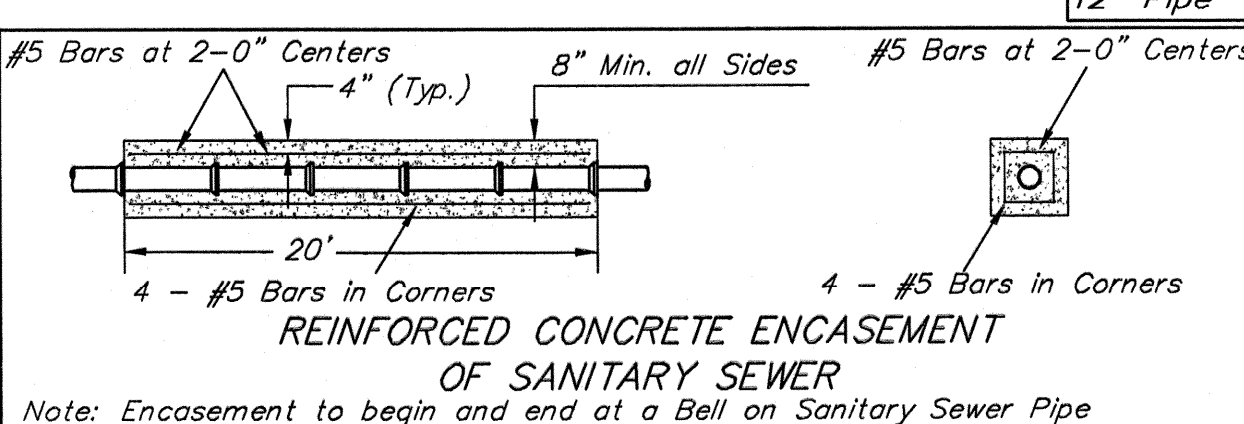
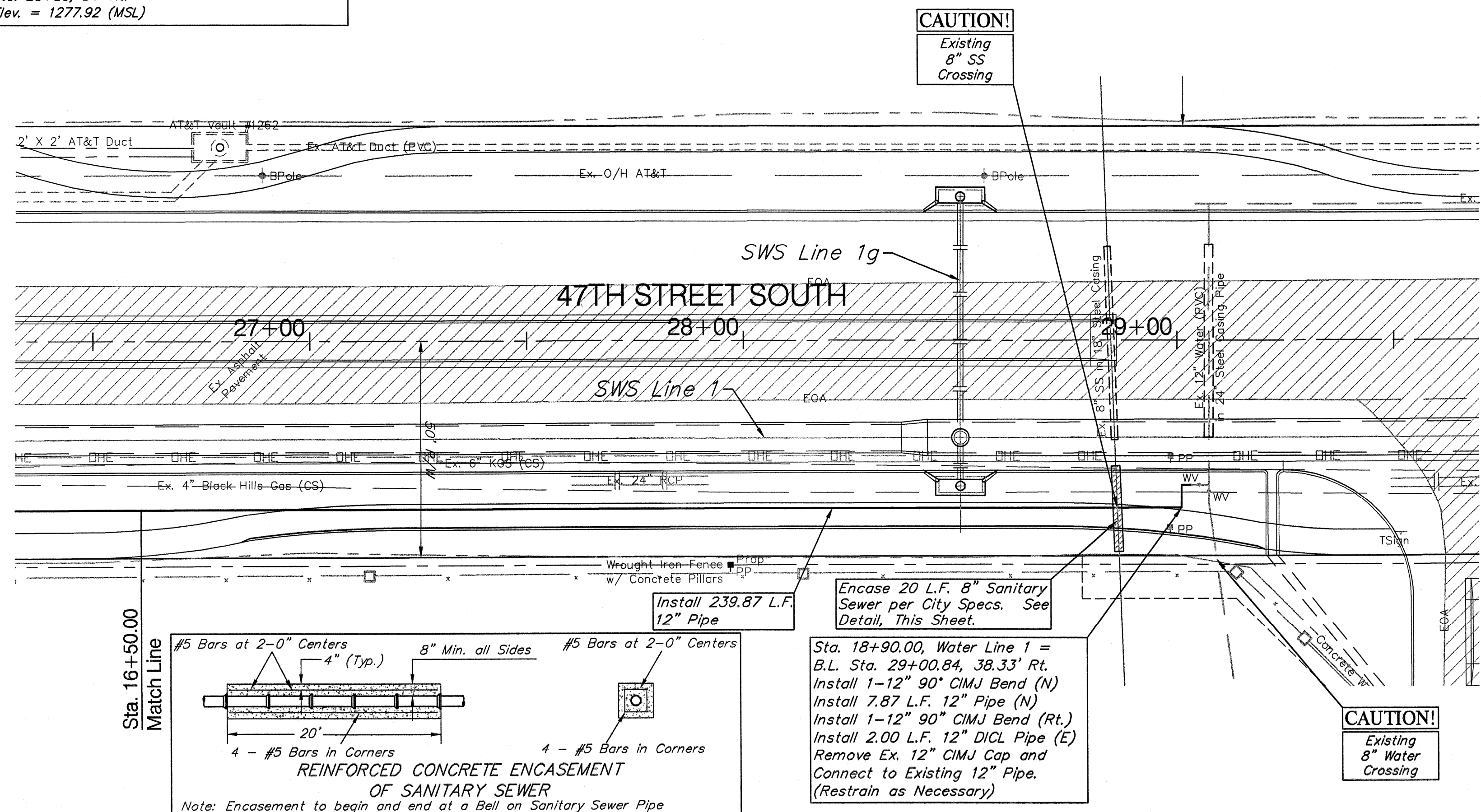


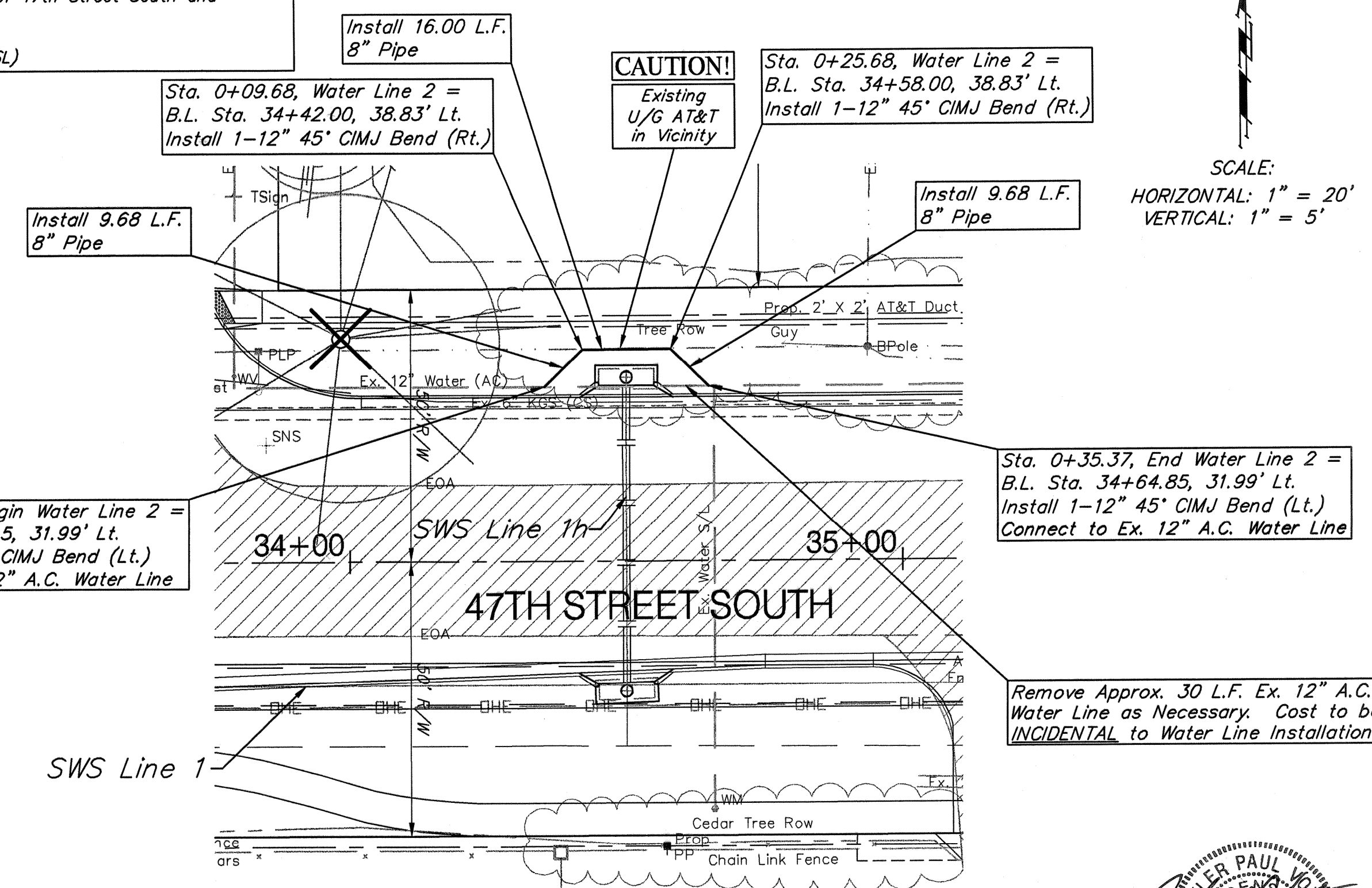
BENCHMARK:  
 BM #3 - Cut in the Concrete Base of Metal Fence Post  
 28' West of the Fourth Concrete Pillar West of the  
 South Lakes Park Entrance  
 Sta. 25+86, 54' Rt.  
 Elev. = 1277.92 (MSL)



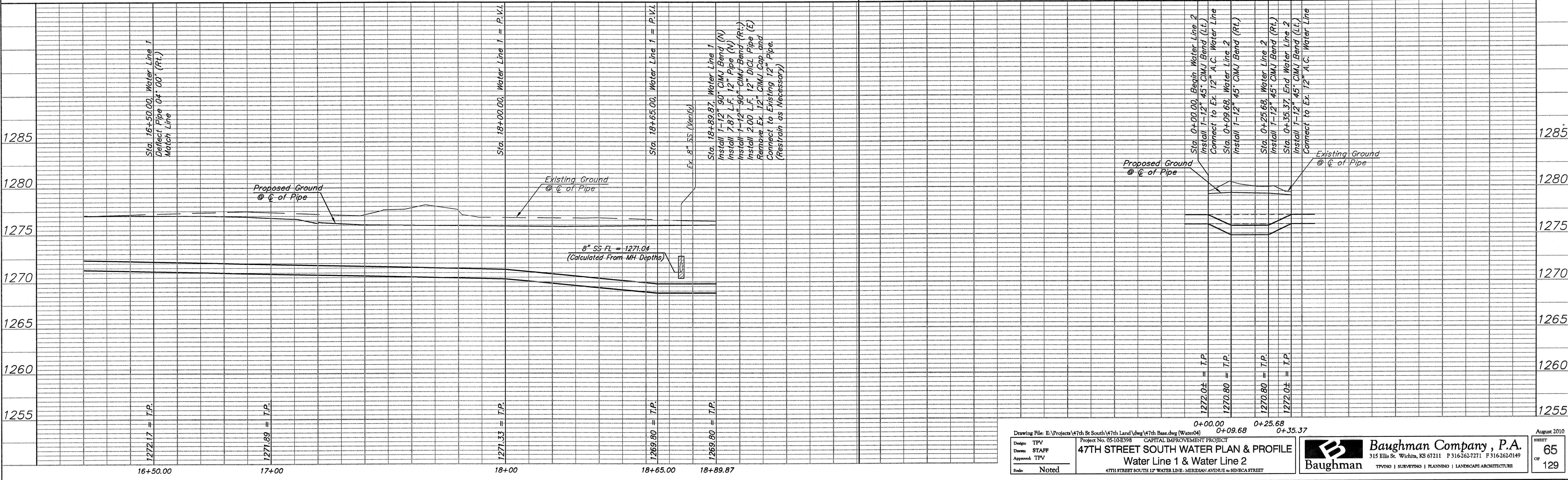
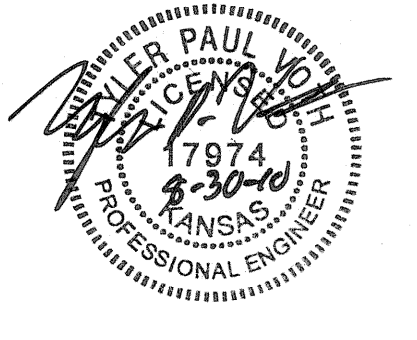
Install 239.87 L.F. 12" Pipe  
 Encase 20 L.F. 8" Sanitary Sewer per City Specs. See Detail, This Sheet.  
 Sta. 18+90.00, Water Line 1 = B.L. Sta. 29+00.84, 38.33' Rt.  
 Install 1-12" 90° CIMJ Bend (N)  
 Install 7.87 L.F. 12" Pipe (N)  
 Install 1-12" 90° CIMJ Bend (Rt.)  
 Install 2.00 L.F. 12" DICL Pipe (E)  
 Remove Ex. 12" CIMJ Cap and Connect to Existing 12" Pipe. (Restrains as Necessary)

CAUTION!  
 Existing 8" Water Crossing

BENCHMARK:  
 BM #4 - City of Wichita Disc Located in the Northeast Corner of the Intersection of 47th Street South and Clarence Avenue  
 Sta. 36+56, 54' Lt.  
 Elev. = 1272.50 (MSL)



SCALE:  
 HORIZONTAL: 1" = 20'  
 VERTICAL: 1" = 5'



Design File: E:\Projects\47th St South\47th Land\dwg\47th Base.dwg (Water04)  
 Design: TPV  
 Drawn: STAFF  
 Appointed: TPV  
 Scale: Noted

Project No: 05-103398 - CAPITAL IMPROVEMENT PROJECT  
**47TH STREET SOUTH WATER PLAN & PROFILE**  
 Water Line 1 & Water Line 2  
 47TH STREET SOUTH 12" WATER LINE - MERIDIAN AVENUE to SENECA STREET

Sta. 0+00.00, Begin Water Line 2 = B.L. Sta. 34+35.15, 31.99' Lt. Install 1-12" 45° CIMJ Bend (Lt.) Connect to Ex. 12" A.C. Water Line  
 Sta. 0+09.68, Water Line 2 = B.L. Sta. 34+42.00, 38.83' Lt. Install 1-12" 45° CIMJ Bend (Rt.)  
 Sta. 0+25.68, Water Line 2 = B.L. Sta. 34+58.00, 38.83' Lt. Install 1-12" 45° CIMJ Bend (Rt.)  
 Sta. 0+35.37, End Water Line 2 = B.L. Sta. 34+64.85, 31.99' Lt. Install 1-12" 45° CIMJ Bend (Lt.) Connect to Ex. 12" A.C. Water Line

August 2010  
 SHEET 65 OF 129  
**Baughman Company, P.A.**  
 315 Bills St. Wichita, KS 67211 P 3162627371 F 3162620149  
 TYPING | SURVEYING | PLANNING | LANDSCAPE ARCHITECTURE