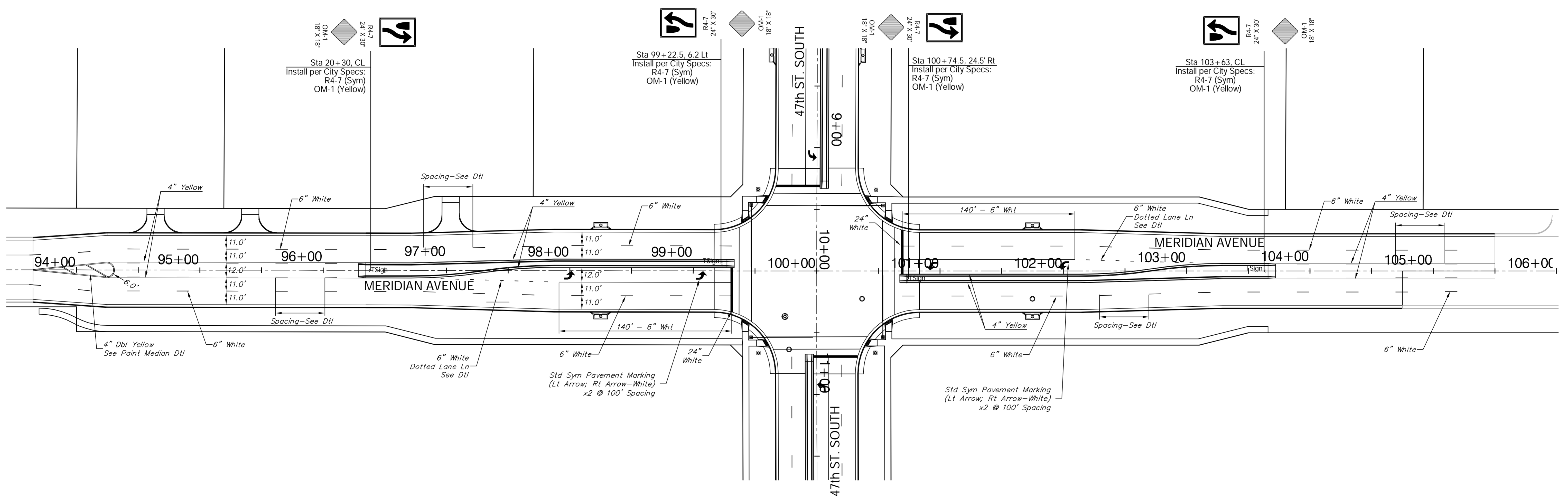


| | | | | | |
|-----------------|--------|--------------|-------------|-----------|--------------|
| FHWA REGION NO. | STATE | PROJECT NO. | FISCAL YEAR | SHEET NO. | TOTAL SHEETS |
| 7 | KANSAS | 87 N-0394-01 | 2010 | 79 | 129 |



SCALE: 1" = 40'



The Striping Contractor may be Required to Adjust the Proposed Pavement Marking to Match the Ex. Pavement Markings in the Field. The Contractor may also be Required to Remove & Replace the Ex. Pavement Markings as Necessary, Including Those Removed for Traffic Control Beyond the Construction Limits. These Costs Shall be **INCIDENTAL** to the Lump Sum Bid Item "Pavement Marking".