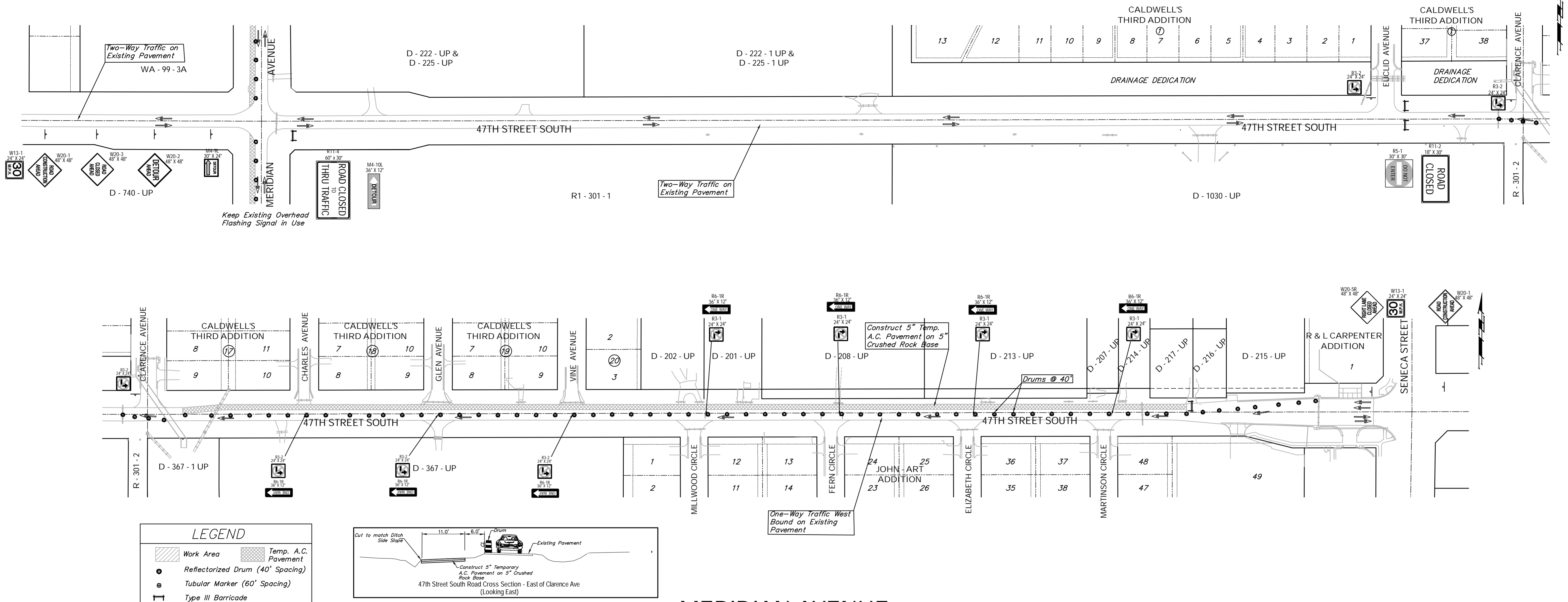


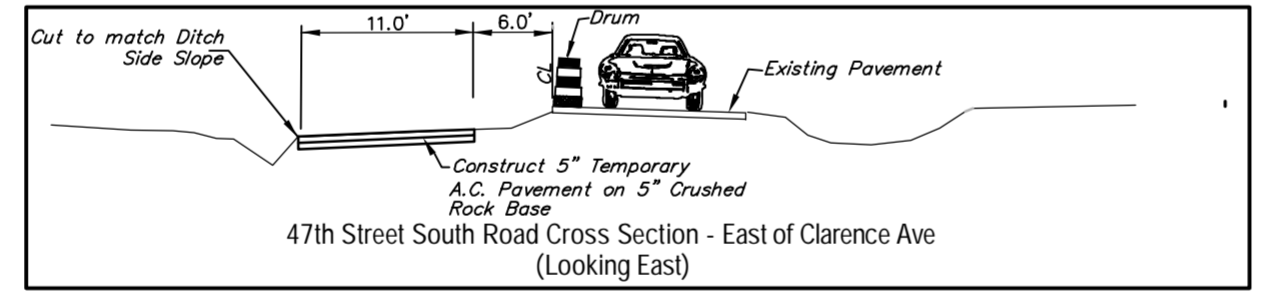
FHWA REGION NO.	STATE	PROJECT NO.	FISCAL YEAR	SHEET NO.	TOTAL SHEETS
7	KANSAS	87 N-0394-01	2010	82	129

See Detour Detail Sheet 81 for Detour Signing.

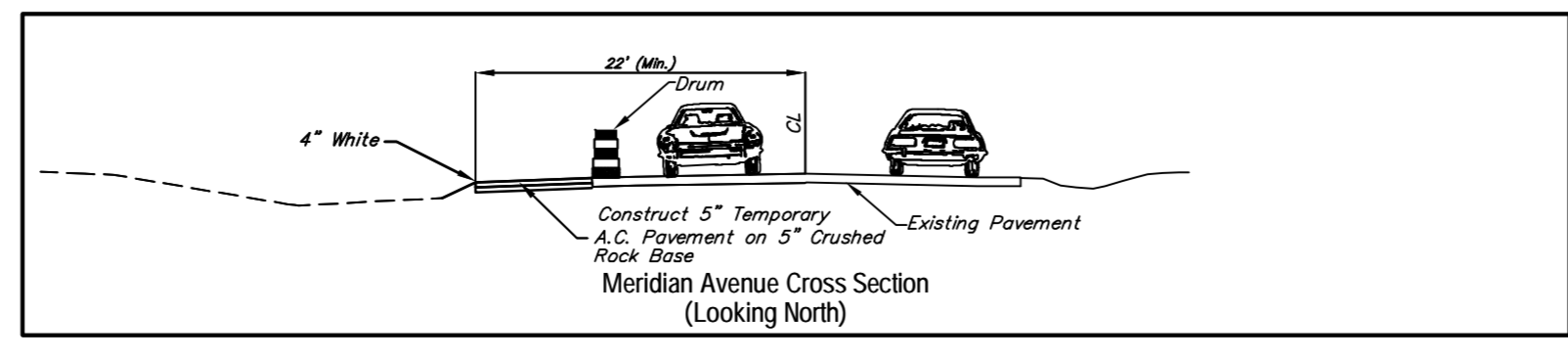
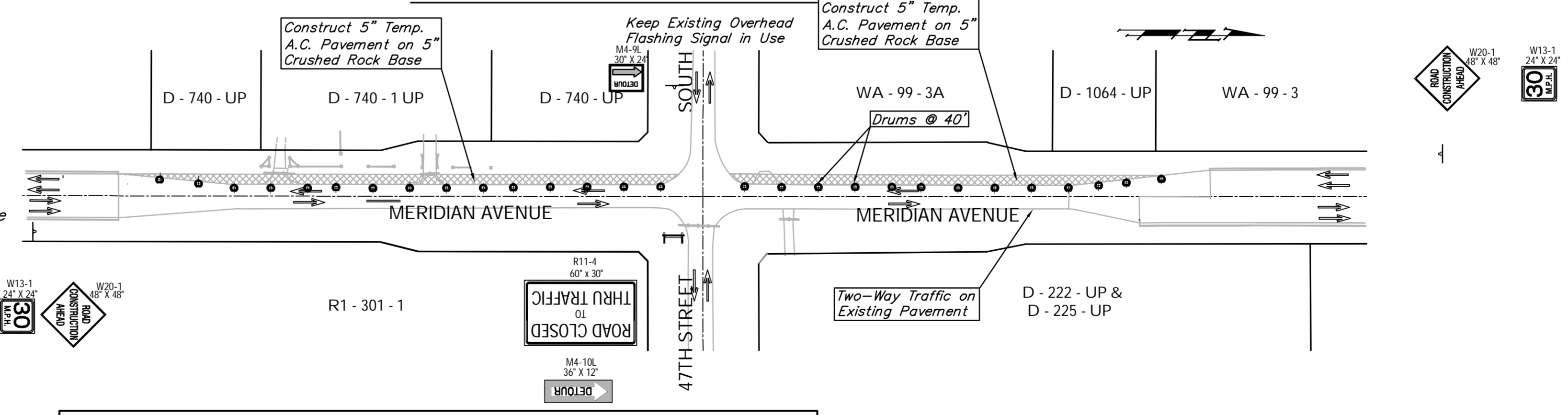
47th STREET SOUTH



LEGEND	
	Work Area
	Temp. A.C. Pavement
	ReflectORIZED Drum (40' Spacing)
	Tubular Marker (60' Spacing)
	Type III Barricade
	Traffic Flow Pattern



MERIDIAN AVENUE



PHASE 1

Remove conflicting trees, shrubs, fences, etc. throughout Project. Use lighted information boards and/or traffic signs to inform public that traffic on 47th Street South will be west-bound only during portions of the construction. Also use lighted information boards to direct traffic to south entrance of the South Lake Soccer Complex during soccer season. Set up detour for east-bound traffic on 47th Street South at Meridian north to MacArthur Avenue using signs, barricades, etc. Construct 11' wide Temporary A.C. Pavement lane on the west side of Meridian and the north side of 47th Street South between Clarence Ave and Seneca. Two-way traffic is to be maintained on 47th Street South, west of Euclid Ave and Meridian on the existing pavement. One-way west bound traffic to be maintained on 47th Street South east of Euclid Ave. Flagmen may be used to close short sections of road during the day as necessary. Local access to residences shall be maintained.

PAVEMENT QUANTITIES FOR PHASE 1	
5" Temporary A.C. Pavement on 5" Crushed Rock Base	3982 S.Y.
FOR INFORMATION ONLY. Cost to be SUBSIDIARY to the Lump Sum Bid Item "Traffic Control (Construction)."	

Drawing File: E:\Proj\47th St South\Traffic\47th ConSeq.dwg (Phase 1)
 Project No: 05-10E397 CAPITAL IMPROVEMENT PROJECT
47th STREET SOUTH CONSTRUCTION SEQUENCING PLAN - PHASE 1
 47TH STREET SOUTH - MERIDIAN AVENUE TO SENECA STREET
 Design: TPV
 Drawn: STAFF
 Approved: TPV
 Scale: 1" = 100'

August 2010

Baughman Company, P.A.
 315 Ellis St., Wichita, KS 67211 P 316-262-1271 F 316-262-0149
 ENGINEERING | SURVEYING | PLANNING | LANDSCAPE ARCHITECTURE

SHEET 82 OF 129