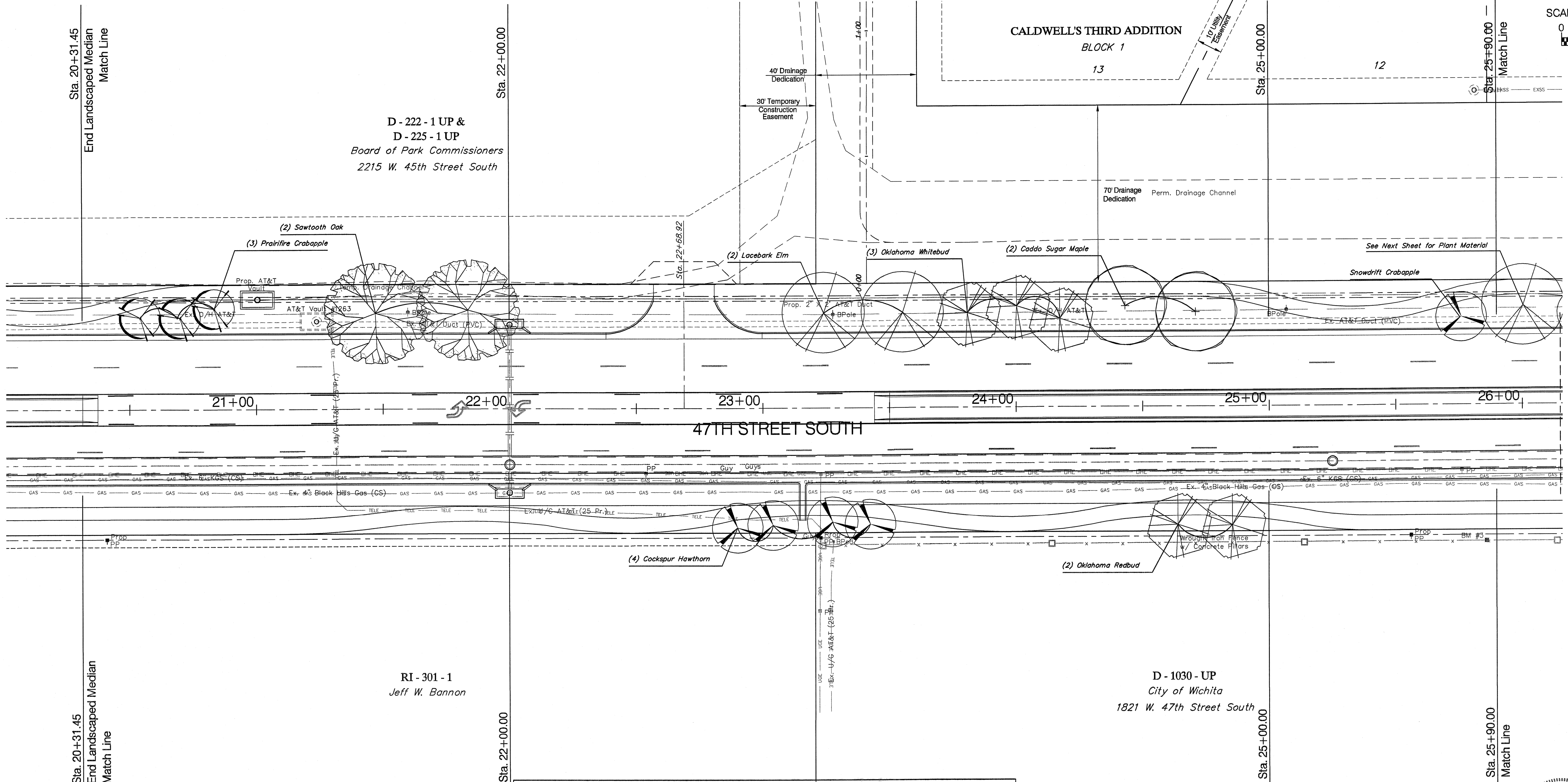
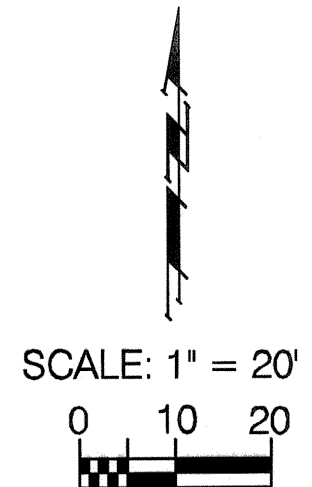


BENCHMARK:

TRWA REGION NO.	STATE	PROJECT NO.	FISCAL YEAR	SHEET NO.	TOTAL SHEETS
7	KANSAS	87 N-0394-01	2010	100	129



**Plant List - This Sheet Only**

Count	SCIENTIFIC	COMMON	SIZE	METHOD	NOTE
2	Acer saccharum 'Caddo'	Caddo Sugar Maple	3" Cal	B&B	Full & Healthy
2	Cercis canadensis ssp. texensis 'Oklahoma'	Oklahoma Redbud	2" Cal	B&B	Full & Healthy
3	Cercis canadensis ssp. texensis 'Oklahoma Whitebud'	Oklahoma Whitebud	2" Cal	B&B	Full & Healthy
4	Crataegus crusgalli var. inermis	Cockspur Hawthorn	3" Cal	B&B	Full & Healthy, Thornless
3	Malus 'Prairifire'	Prairifire Crabapple	3" Cal	B&B	Full & Healthy
1	Malus 'Snowdrift'	Snowdrift Crabapple	3" Cal	B&B	Full & Healthy
2	Quercus acutissima	Sawtooth Oak	3" Cal	B&B	Full & Healthy
2	Ulmus parvifolia 'Allee'	Lacebark Elm	3" Cal	B&B	Full & Healthy

Drawing File: E:\eng\47th St South Landscape\47thS\_Landscape.dwg  
 Project No. 05-10-E397 CAPITAL IMPROVEMENT PROJECT  
**47TH STREET SOUTH LANDSCAPE**  
 Sta. 20+31.45 to Sta. 25+90.00  
 47TH STREET SOUTH - MERIDIAN AVENUE to SENSICA STREET

Design: BKB  
 Drawn: BKB  
 Approved: PJM  
 Scale: 1"=20'

**Baughman Company, P.A.**  
 315 Ellis St. Wichita, KS 67211 P 316-262-7271 F 316-262-0149  
 ENGINEERING | SURVEYING | PLANNING | LANDSCAPE ARCHITECTURE

August 2010  
 SHEET **100** OF **129**

